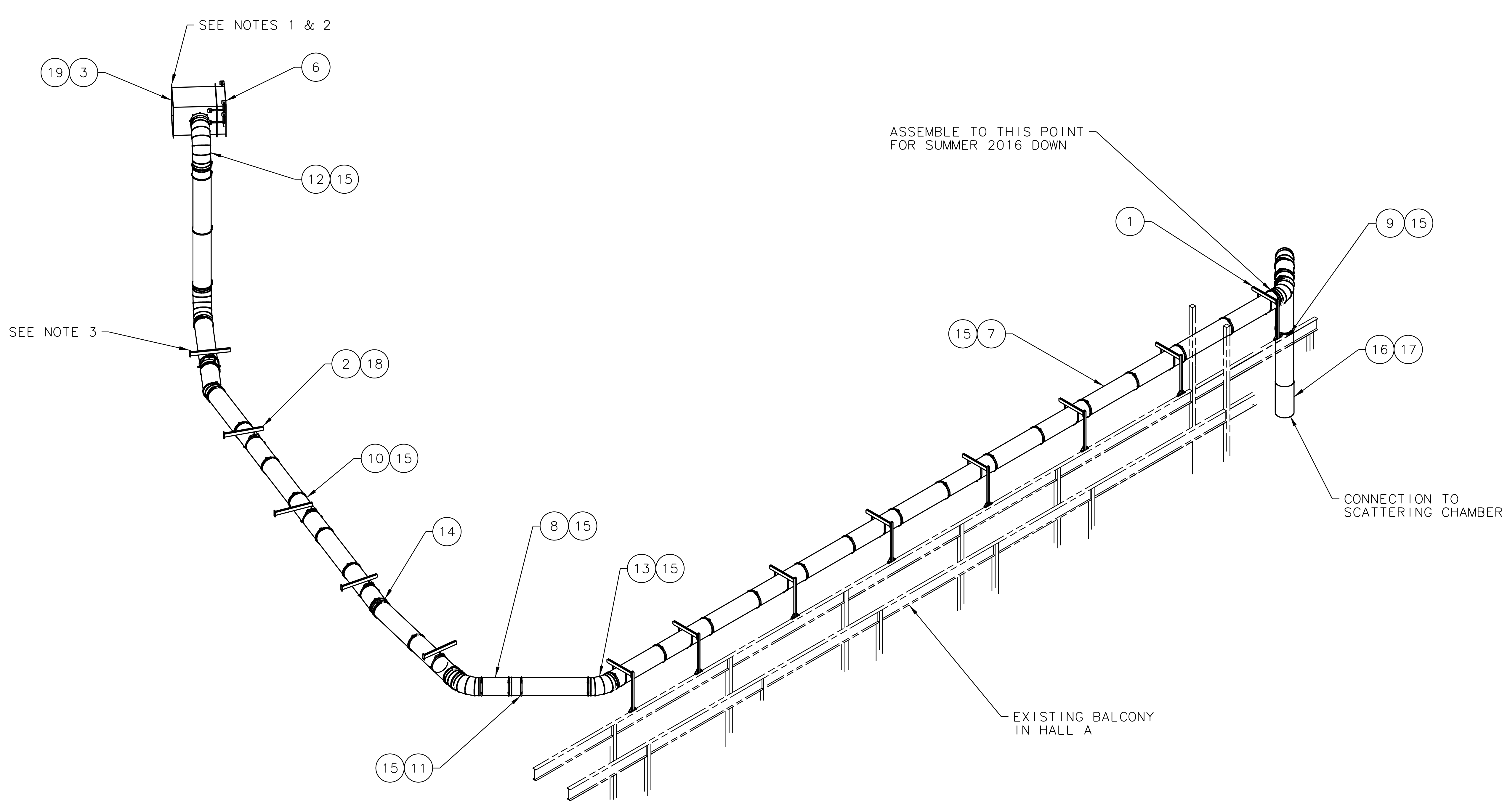


REVISION HISTORY				
ZONE	REV	DESCRIPTION	DATE	APPROVED



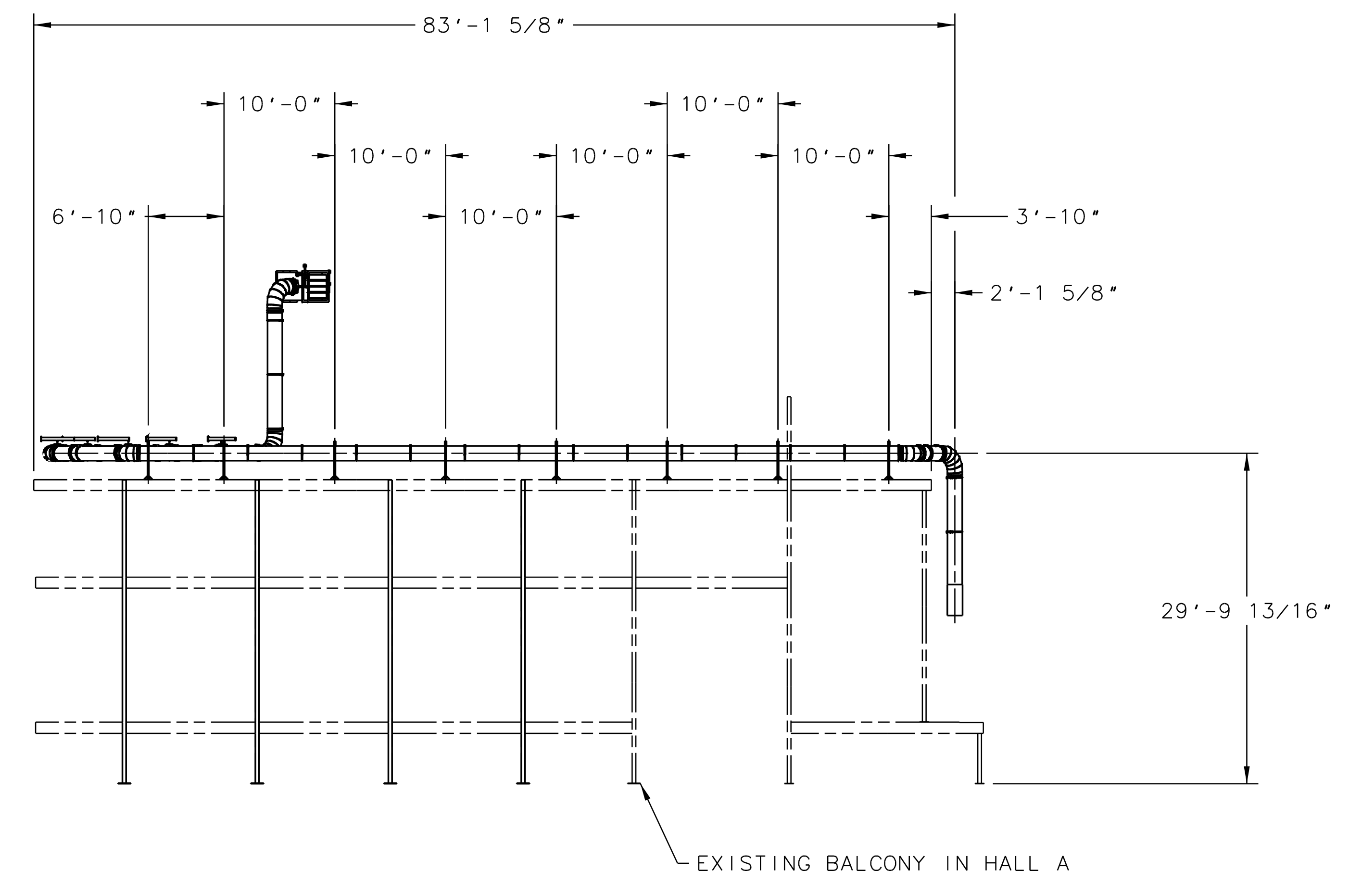
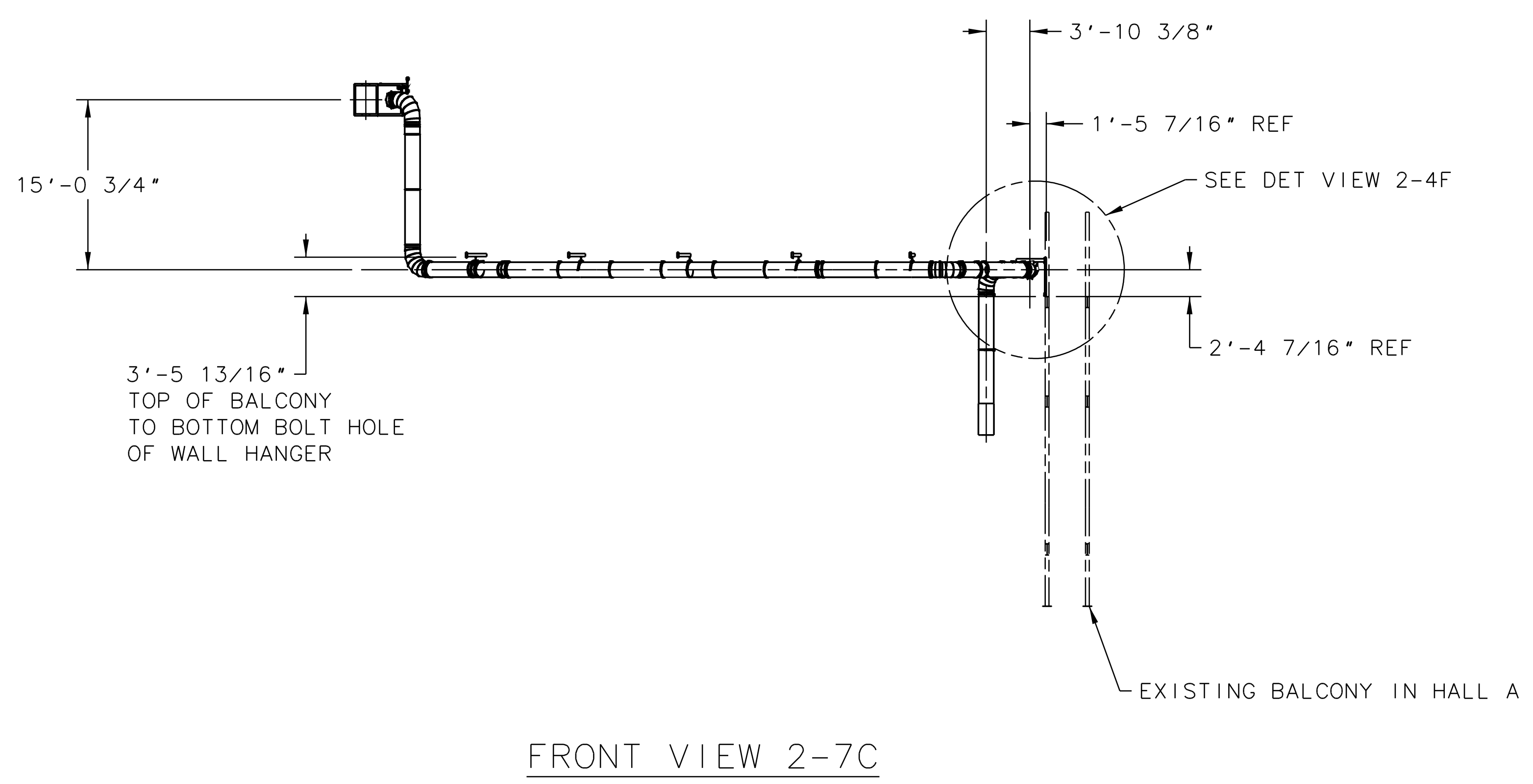
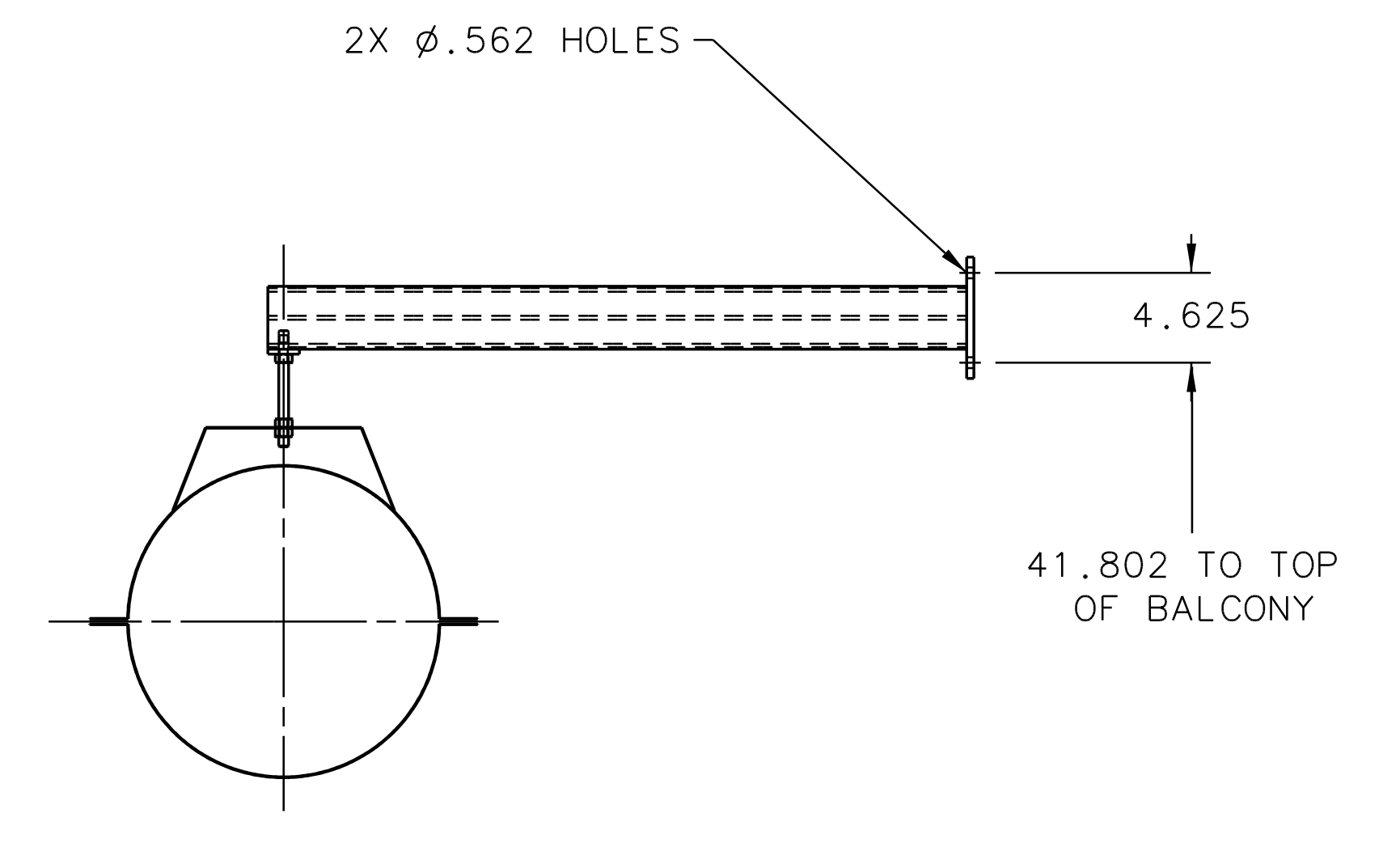
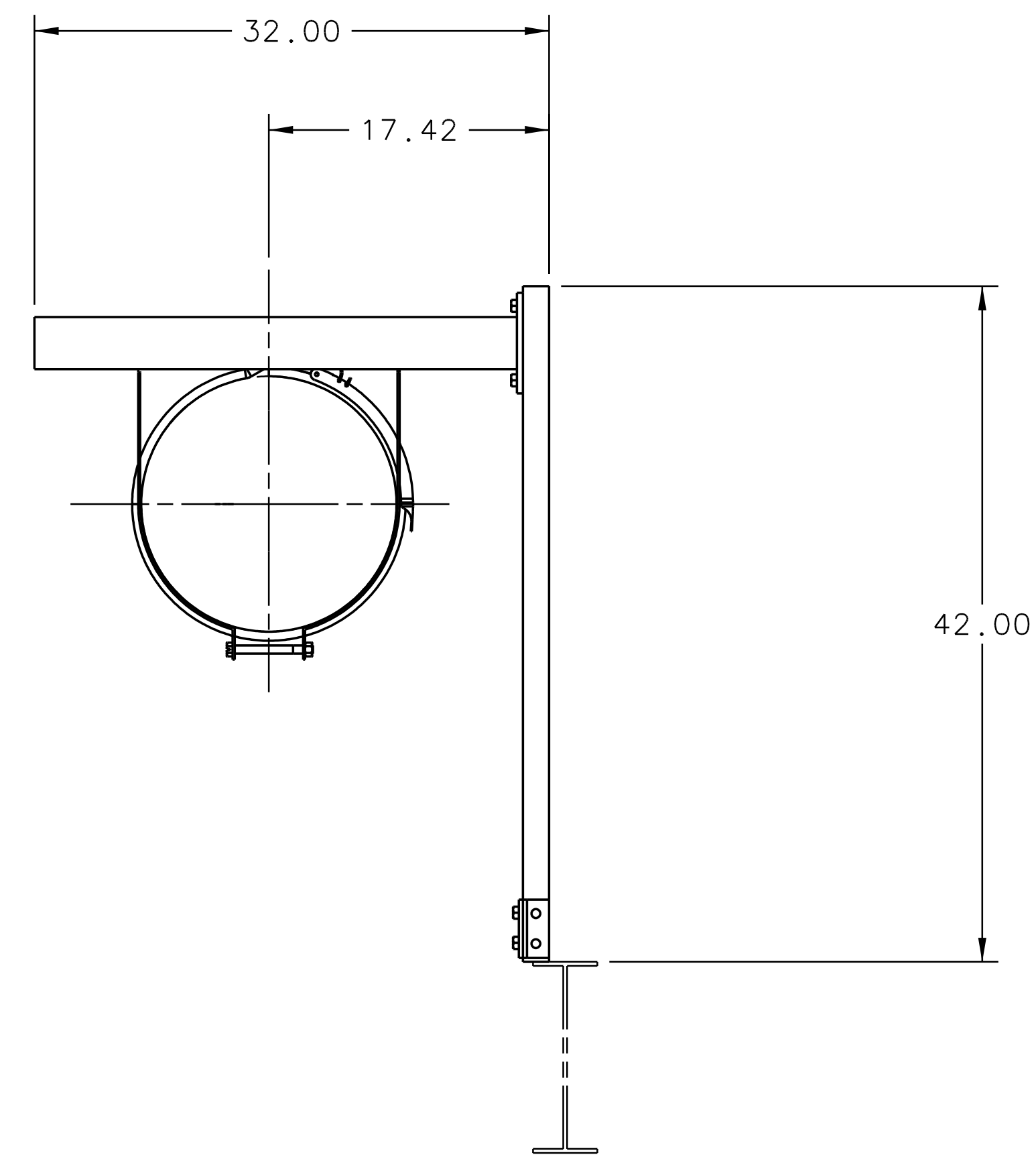
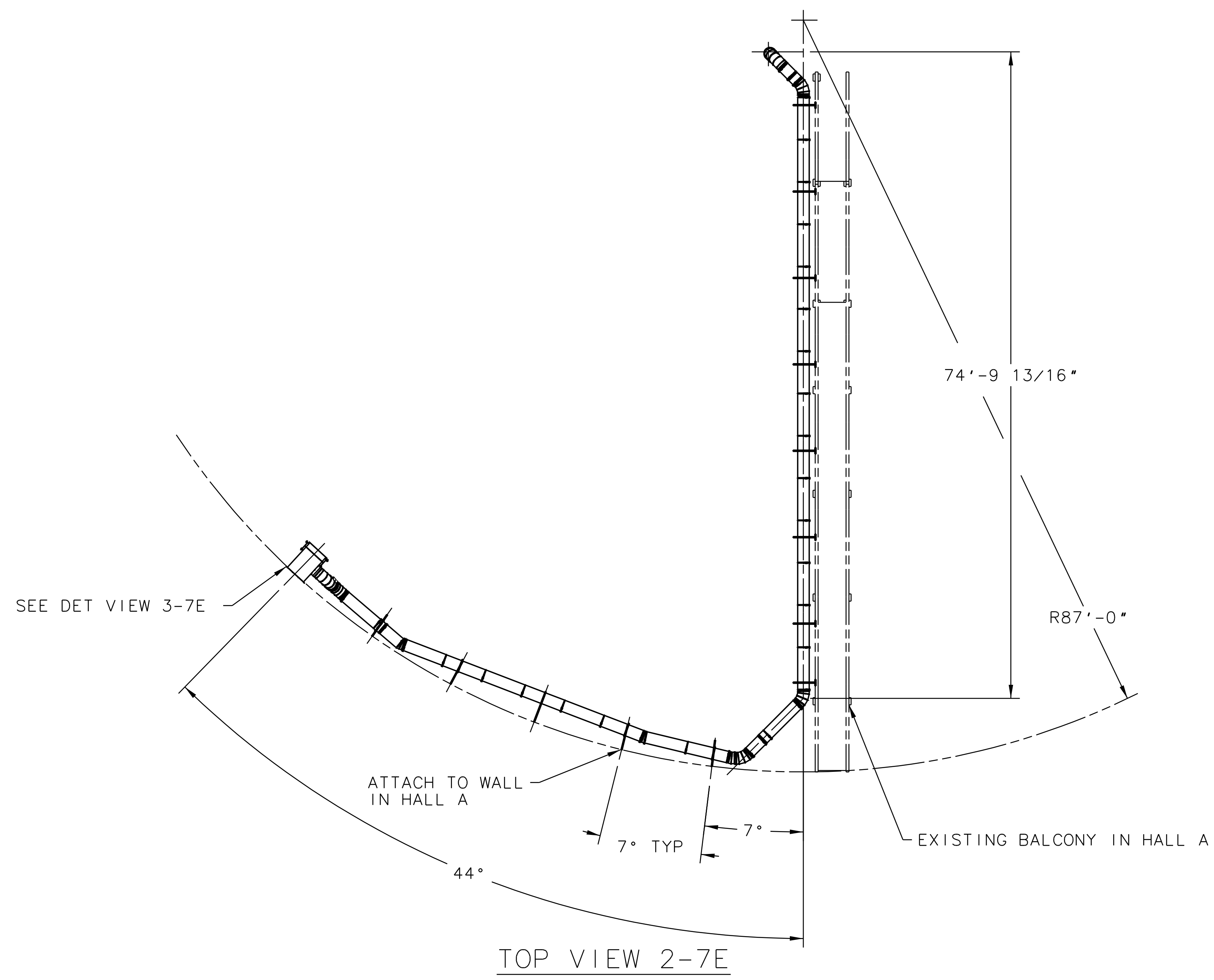
ISO VIEW 1-6B

- NOTES:
1. WHEN ATTACHING EXHAUST HOOD (ITEM 3) TO WALL :
USE HILTI HD1-L + 3/8 (ITEM 19)
DRILL ϕ .500 HOLES X 1.563 DP MIN.
INSTALL IN COMPLIANCE WITH HILTI INSTRUCTIONS FOR USE.
TORQUE TO 11 FT-LBF.
 2. PREP WALL BY CLEANING, SCRAPING RUST/SCALE AND LOOSE PAINT.
 3. WHEN ATTACHING WALL HANGERS (ITEM 2) TO WALL :
USE HILTI HD1-L + 1/2 (ITEM 18)
DRILL ϕ .625 HOLES X 2 IN DP MIN.
INSTALL IN COMPLIANCE WITH HILTI INSTRUCTIONS FOR USE.
TORQUE TO 22 FT-LBF.

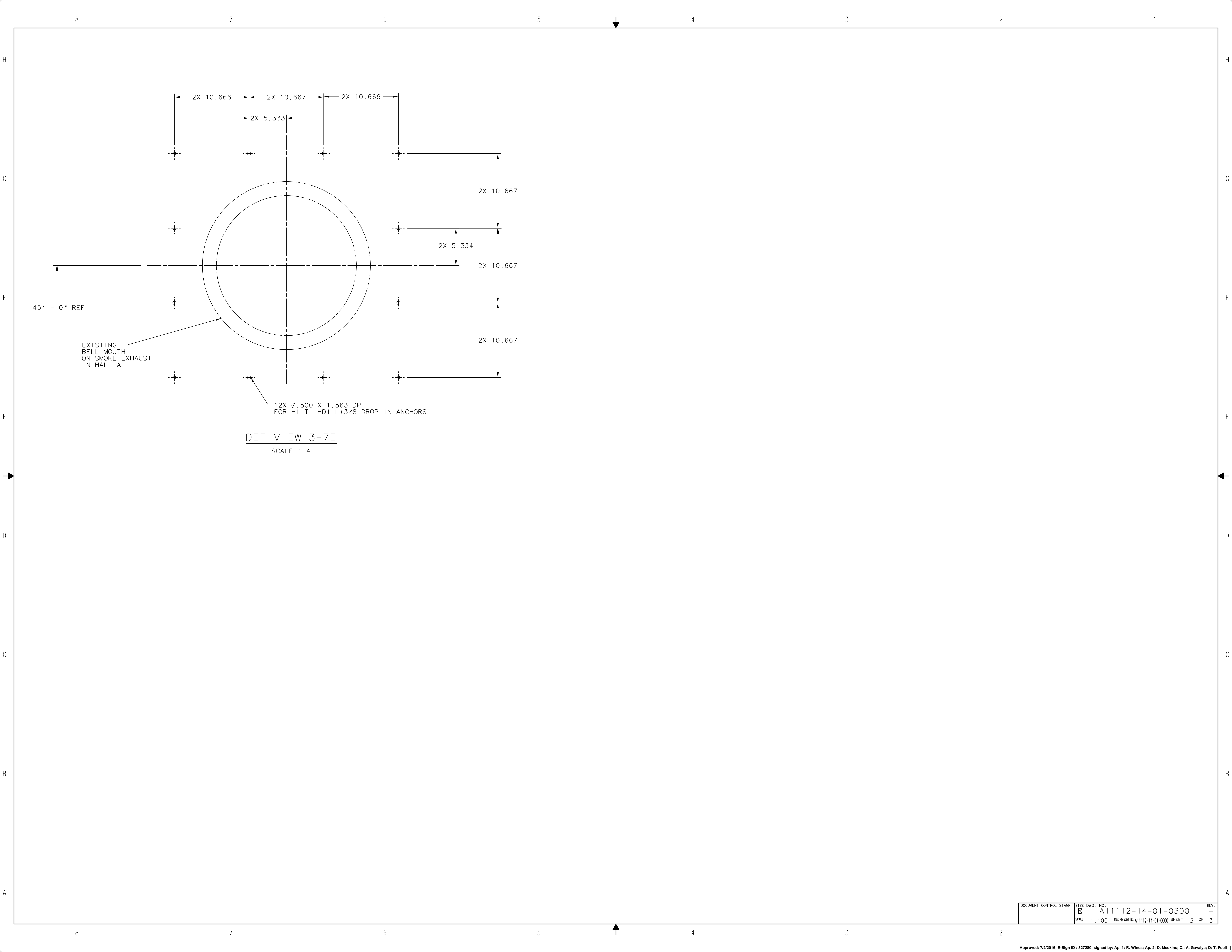
QTY	ITEM NO.	PART OR IDENTIFYING NO.	DESCRIPTION	MATERIAL	NOTES
12	19	HILTI HDL-L +3/8	DROP IN ANCHOR HDL-L +3/8	STAINLESS STEEL	-
10	18	HILTI HD1-L + 1/2	DROP IN ANCHOR HDL-L +1/2	STAINLESS STEEL	-
3	17	McMASTER CARR 5215K31 OR EQ	HOSE CLAMP 16 DIA	STAINLESS STEEL	-
AR	16	McMASTER CARR 5266K41 OR EQ	DUCT HOSE 16 DIA	BLACK NEOPRENE-COATED POLYESTER	-
43	15	McMASTER CARR 1761K146 OR EQ	QUICK ASSY CLAMP 16 DIA	GALVANIZED STEEL	-
2	14	McMASTER CARR 1761K132 OR EQ	QUICK ASSY DUCT 16 DIA 45 ELBOW MODIFIED TO 22.5	GALVANIZED STEEL	-
3	13	McMASTER CARR 1761K132 OR EQ	QUICK ASSY DUCT 16 DIA 45 ELBOW	GALVANIZED STEEL	-
3	12	McMASTER CARR 1761K126 OR EQ	QUICK ASSY DUCT 16 DIA 90 ELBOW	GALVANIZED STEEL	-
4	11	McMASTER CARR 1761K124 OR EQ	QUICK ASSY DUCT 16 DIA ADJUSTMENT SLEEVE	GALVANIZED STEEL	-
1	10	McMASTER CARR 1761K122X33 OR EQ	QUICK ASSY DUCT 16 DIA X 5 FT CUT TO 33 IN LG	GALVANIZED STEEL	-
1	9	McMASTER CARR 1761K122X19 OR EQ	QUICK ASSY DUCT 16 DIA X 5 FT CUT TO 19 IN LG	GALVANIZED STEEL	-
2	8	McMASTER CARR 1761K122X26 OR EQ	QUICK ASSY DUCT 16 DIA X 5 FT CUT TO 26 IN LG	GALVANIZED STEEL	-
28	7	McMASTER CARR 1761K122 OR EQ	QUICK ASSY DUCT 16 DIA X 5 FT	GALVANIZED STEEL	-
1	6	GRENNHECK HPR-120	DAMPER 30 X 30	GALVANIZED STEEL	-
-	5	-	-	-	-
-	4	-	-	-	-
1	3	A11112-14-01-1900	EXHAUST HOOD ASSY	ALUMINUM	-
5	2	A11112-14-01-1300	WALL HANGER ATTACHMENT	COMPOSITE	-
8	1	A11112-14-01-0700	HANGER ATTACHMENT	COMPOSITE	-

DOCUMENT CONTROL STAMP	DIV & TOL PER ASME Y14.5 UNLESS OTHERWISE SPECIFIED DIMENSIONS ARE IN INCHES TOLERANCES ARE FRACTIONS DECIMAL ANGLES ± N/A ± .1 ± .005 ± .005	TRACKING NO. N/A	United States Department of Energy
MATERIAL SEE PARTS LIST	THIRD ANGLE PROJECTION	APPROVALS DATE	Jefferson Lab Civil - Tritium Exhaust Large Vent Line Subassy
FINISH MACHINED SURFACES DEBURR & BREAK ALL SHARP EDGES	UNLESS OTHERWISE NOTED	CHECKED J. MILLER	APPROVED J. MILLER
DO NOT SCALE DRAWING	SCALE 1:100	DATE 15JUL14	SIZE DWG. NO. A11112-14-01-0300

IN ACCORDANCE WITH THE JEFFERSON LAB ESH&Q MANUAL SUBJECT MATTER EXPERT (SME) SIGNATURES MAY BE REQUIRED.



DOCUMENT CONTROL STAMP	SIZE DWG. NO.	REV.
E	A11112-14-01-0300	-
SCALE 1:100	ISS ON ASSY NO. A11112-14-01-0000	SHEET 2 OF 3



45' - 0" REF

EXISTING
BELL MOUTH
ON SMOKE EXHAUST
IN HALL A

12X ϕ .500 X 1.563 DP
FOR HILTI HDI-L+3/8 DROP IN ANCHORS

DET VIEW 3-7E
SCALE 1:4

DOCUMENT CONTROL STAMP	SIZE	DWG. NO.	REV.
	E	A11112-14-01-0300	-
	SCALE	1:100	ISSUED ON 08/14/14-01-0000 SHEET 3 OF 3