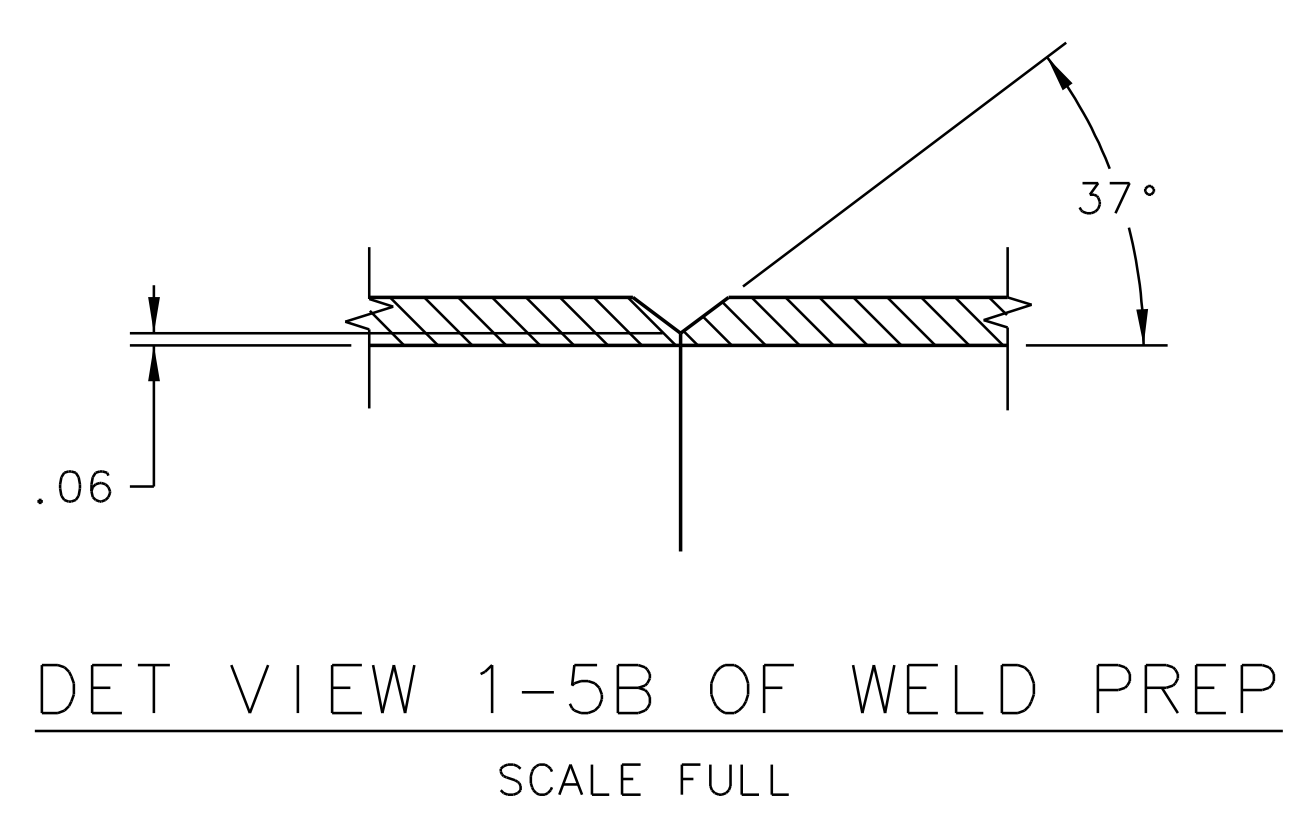
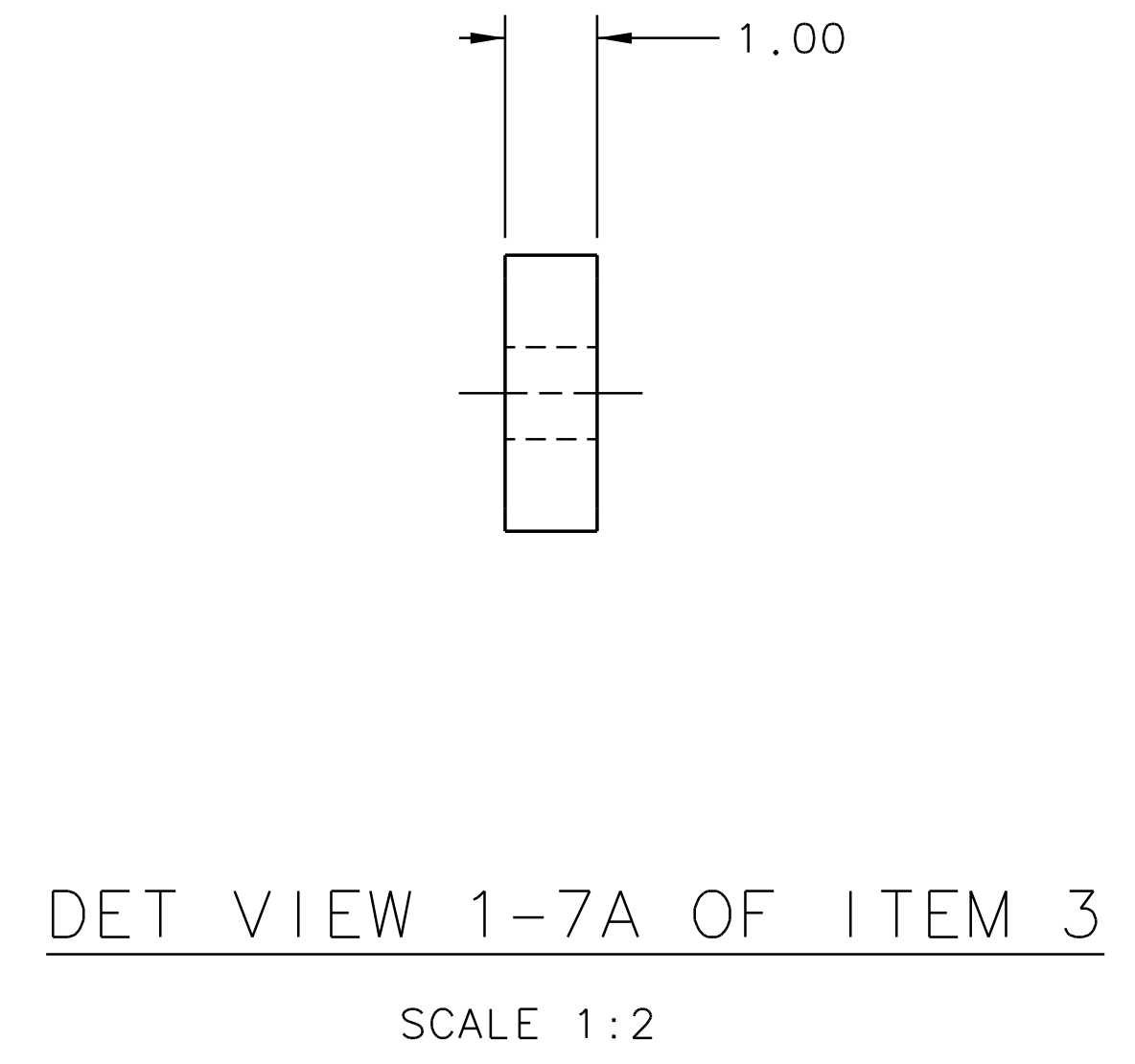
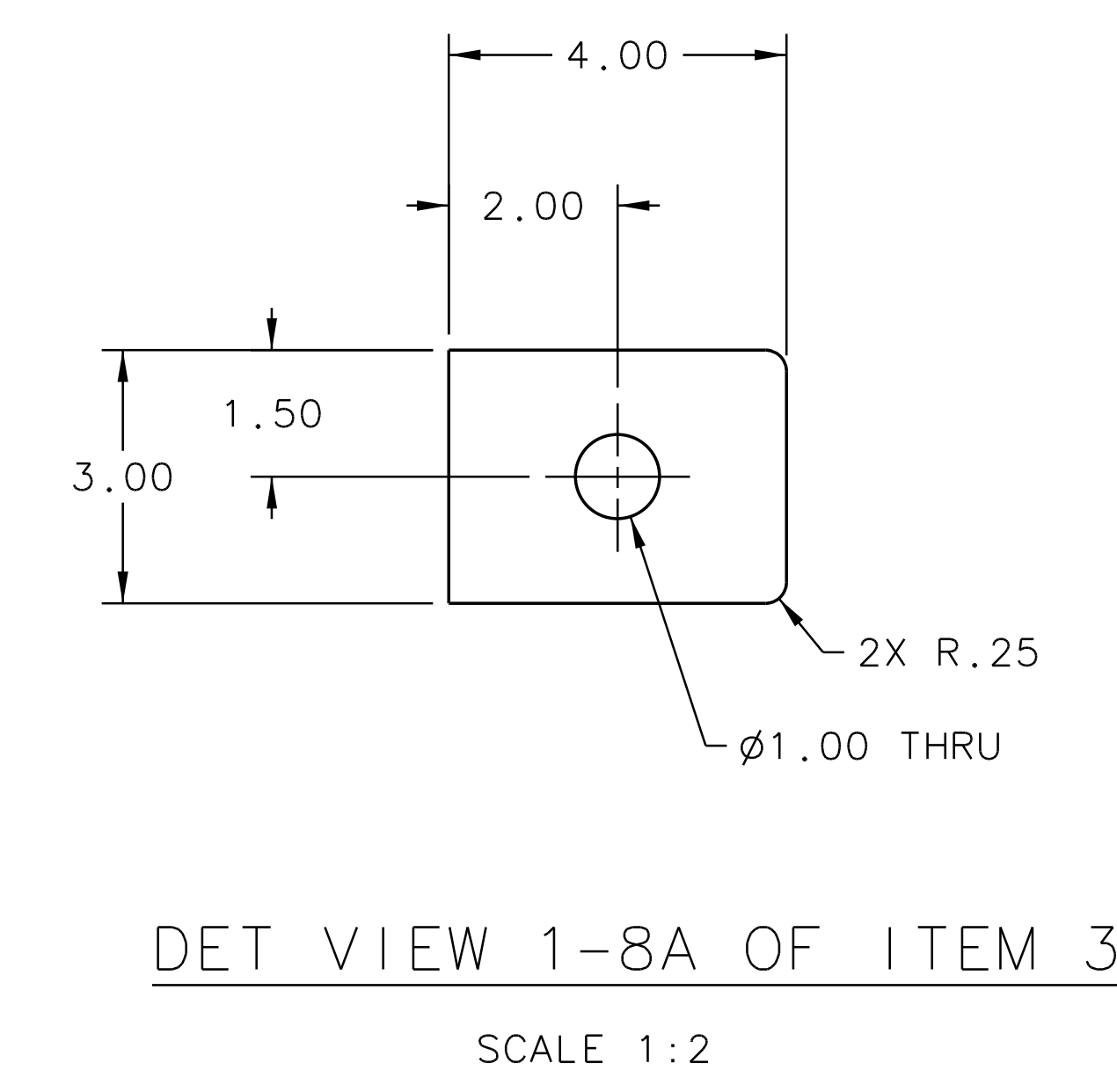
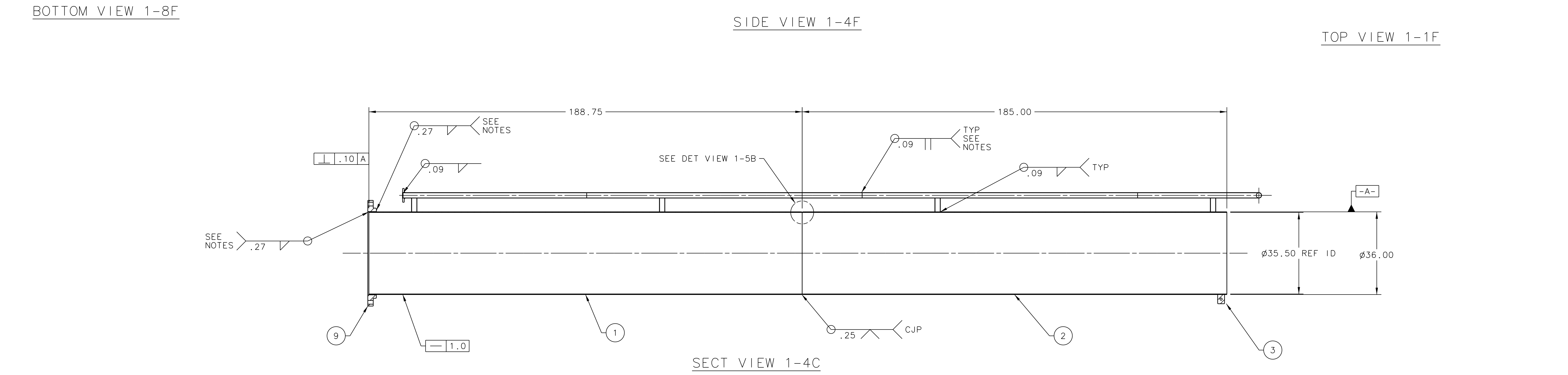
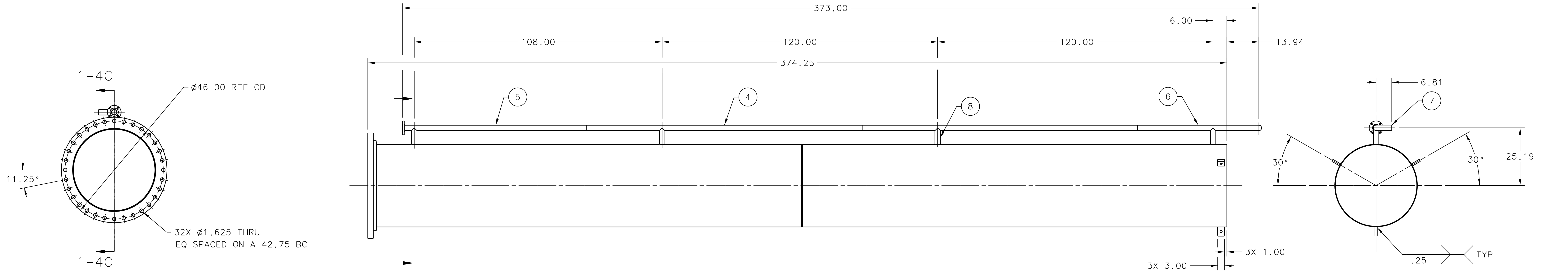


REVISION HISTORY				
ZONE	REV	DESCRIPTION	DATE	APPROVED

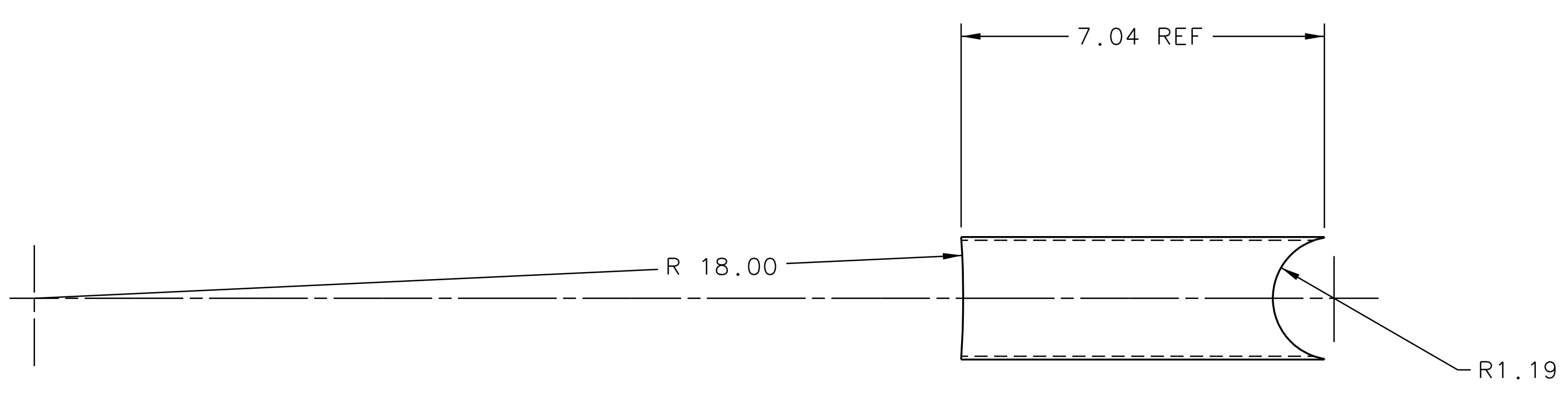


- NOTES:
- APPROX. WEIGHT 3500 LBS.
 - ALL WELDS JLAB CODE WELDS UNLESS OTHERWISE NOTED.
 - APPLICABLE WELDING CODE AWS D1.6 (2007).
 - MTR REQUIRED FOR ALL BASE & FILLER METALS.
 - 100% VISUAL INSPECTION REQUIRED.
 - FINAL INSPECTION BY JLAB WELD INSPECTOR OR DESIGNEE REQUIRED.
 - WELDING PROCESS MAY BE GTAW OR GMAW.
 - WPS SHALL BE APPROVED BY JLAB PRIOR TO WELDING.
 - FILLER ER316L/316 OR ER308L/308.

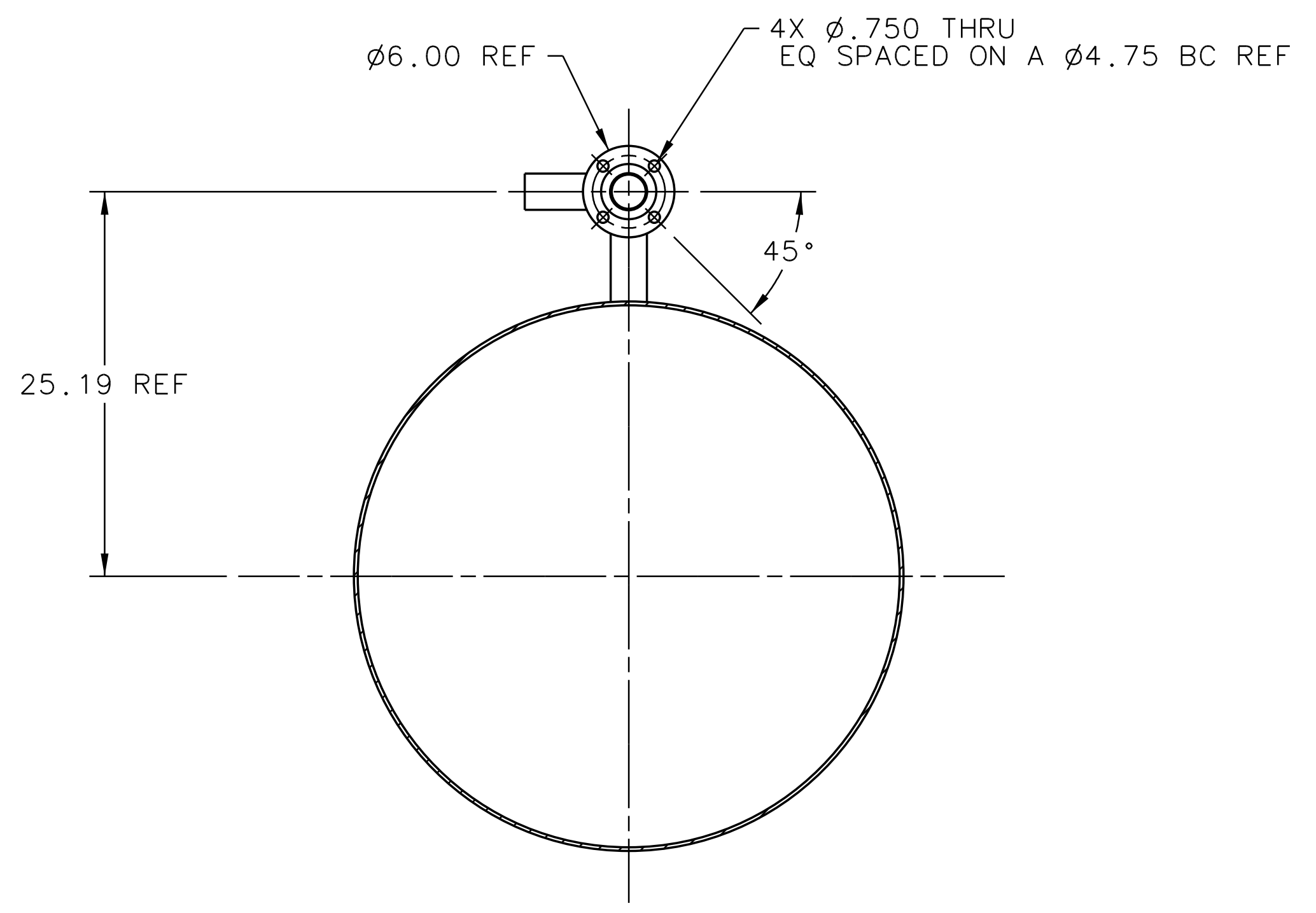
QTY	ITEM NO.	PART OR IDENTIFYING NO.	QUANTITY OR DESCRIPTION	MATERIAL SPECIFICATION	NOTES
1	10	McMASTER CARR 4468K36 OR EQ	FLANGE 2 IN IPS 150 LB SLIP ON	304 STAINLESS STEEL	-
1	9	COASTAL 36125S01S OR EQ	FLANGE 36 IN 150 LB SLIP ON	304 STAINLESS STEEL	-
4	8	A11112-14-01-2000-WLDD8	PIPE 2 SCH 5 X 8.00 LG STANDOFF	304 STAINLESS STEEL ASTM-A312	-
1	7	A11112-14-01-2000-WLDD7	PIPE 2 SCH 5 X 8.00 LG ONE END MITERED	304 STAINLESS STEEL ASTM-A312	-
1	6	A11112-14-01-2000-WLDD6	PIPE 2 SCH 5 X 54.00 LG ONE END MITERED	304 STAINLESS STEEL ASTM-A312	-
1	5	A11112-14-01-2000-WLDD5	PIPE 2 SCH 5 X 80.00 LG	304 STAINLESS STEEL ASTM-A312	-
2	4	A11112-14-01-2000-WLDD4	PIPE 2 SCH 5 X 120.00 LG	304 STAINLESS STEEL ASTM-A312	-
3	3	A11112-14-01-2000-WLDD3	LIFTING EYE	304 STAINLESS STEEL	-
1	2	A11112-14-01-2000-WLDD2	PIPE 36 DIA X .25 WALL X 185.00 LG	304 STAINLESS STEEL ASTM-A777	-
1	1	A11112-14-01-2000-WLDD1	PIPE 36 DIA X .25 WALL X 188.75 LG	304 STAINLESS STEEL ASTM-A777	-

DOCUMENT CONTROL STAMP	DIV & TOL PER ASME Y14.5 UNLESS OTHERWISE SPECIFIED DIMENSIONS ARE IN INCHES FRACTIONS ARE DECIMAL ANGLES ARE IN DEGREES	TRACKING NO. N/A	United States Department of Energy	Jefferson Lab Thomas Jefferson National Accelerator Facility	Newport News Virginia
MATERIAL SEE PARTS LIST	THIRD ANGLE PROJECTION	APPROVALS	DATE	HALL A - EXP11112 SRC CIVIL - TRITIUM EXHAUST OUTSIDE HALL LARGE VENT SUBASSY TOP PIPE WELDMENT	
FINISH MACHINED SURFACES DEBURR & BREAK ALL SHARP EDGES DO NOT SCALE DRAWING	UNLESS OTHERWISE NOTED	DRAWN J. MILLER	02MAY16	SIZE (DWG. NO.) E A11112-14-01-2000	REV. -
		APPROVED		SCALE 1:16	ISS IN ASSY NO. A11112-14-01-0800 SHEET 1 OF 2

IN ACCORDANCE WITH THE JEFFERSON LAB ESH&Q MANUAL SUBJECT MATTER EXPERT (SME) SIGNATURES MAY BE REQUIRED.



DET VIEW 2-6G OF ITEM 8
SCALE 1:2



SECT VIEW 2-7D
SCALE 1:8

DOCUMENT CONTROL STAMP	SIZE	DWG. NO.	REV.
	E	A11112-14-01-2000	-
	SCALE	1:16	ISS IN ASSY NO. A11112-14-01-0000 SHEET 2 OF 2