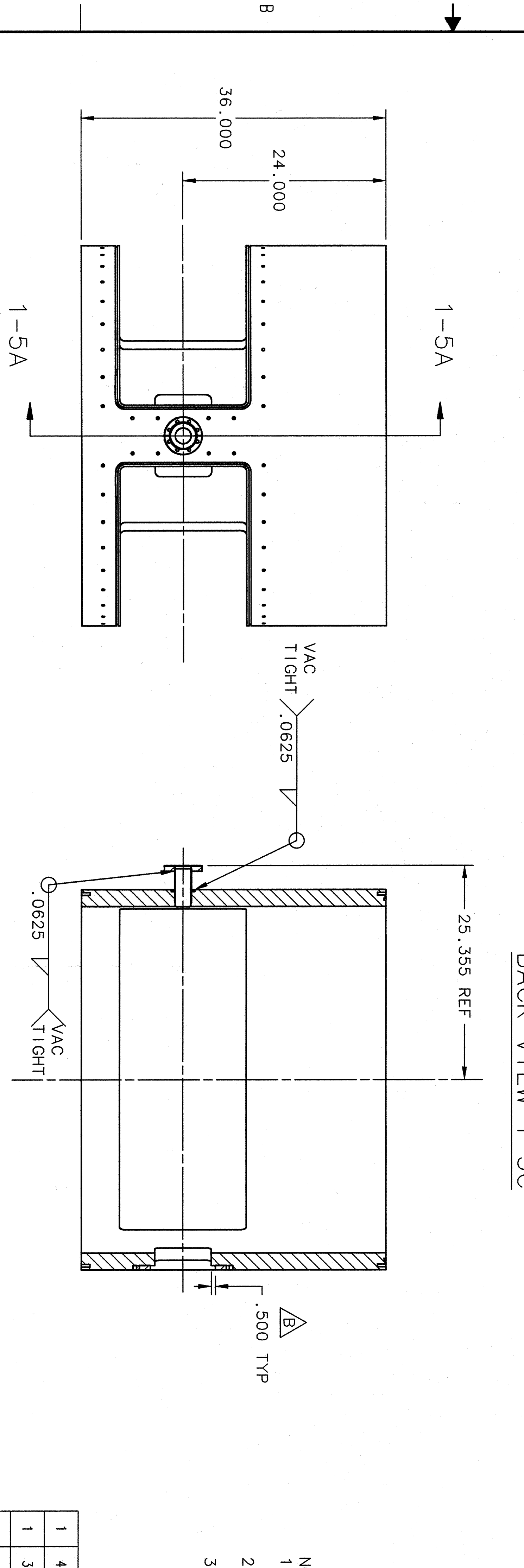
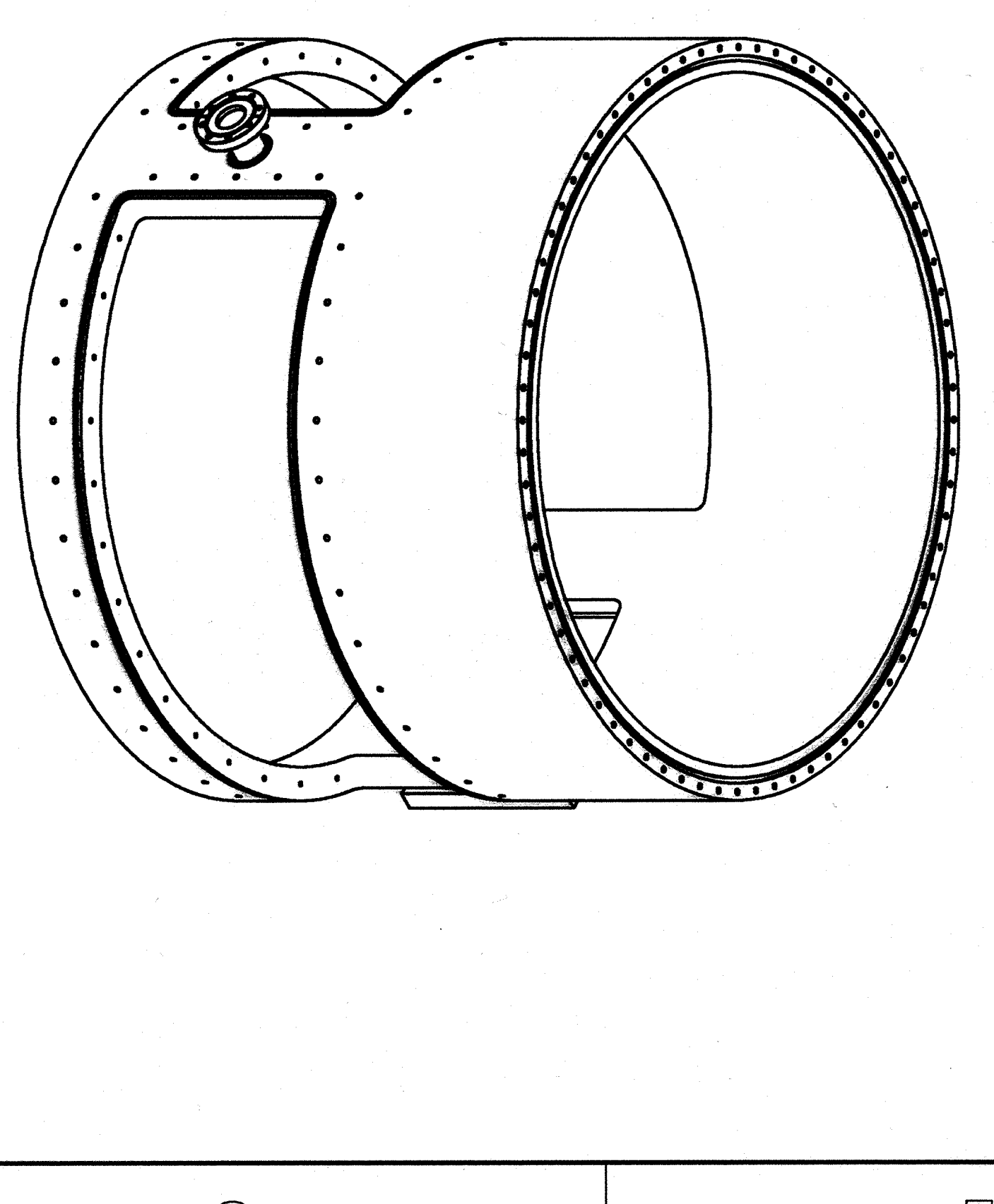
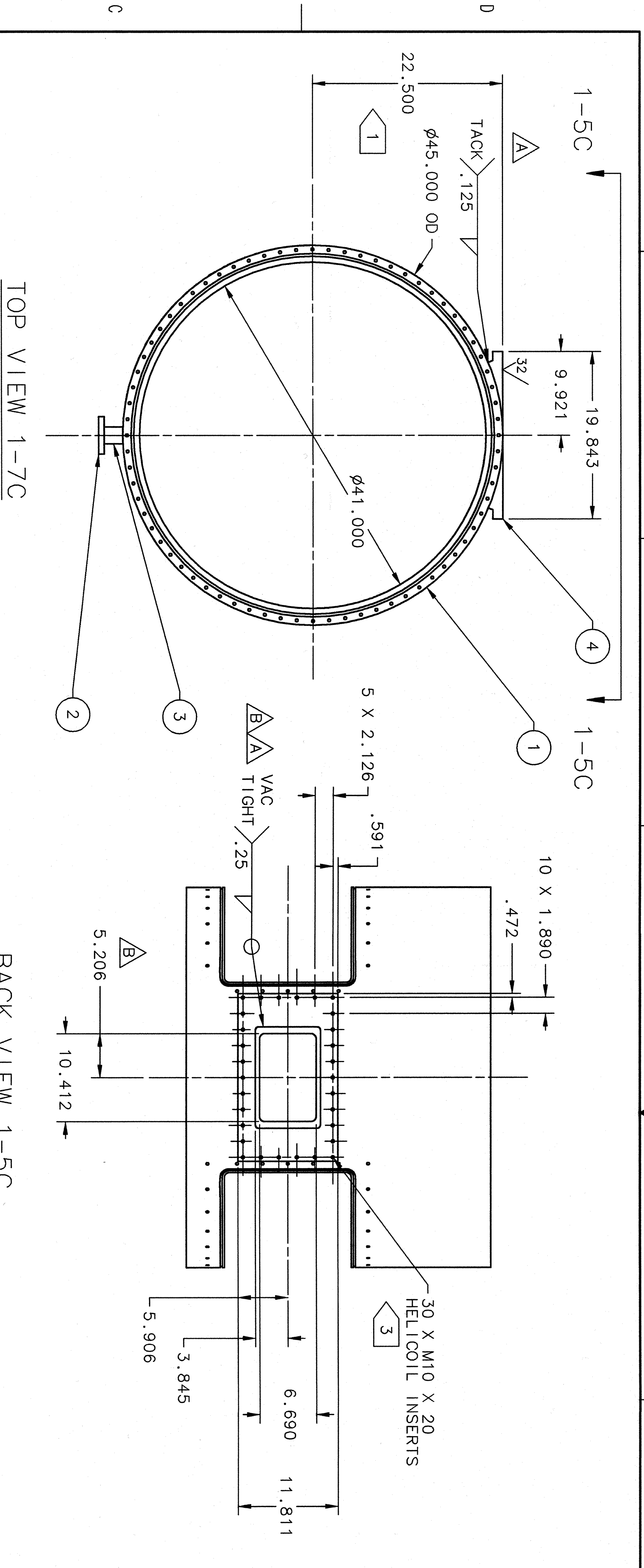


ZONE	REV	DESCRIPTION	DATE	APPROVED
1-8D	A	REVISED WELD SYMBOL: TACK WAS VAC TIGHT	10MAY04	MILLER
1-5C	A	ADDED WELD SYMBOL	14MAY04	ARG
1-5C	B	REVISED DIMENSION: 5.206 WAS 5.480; 10.412 WAS 10.960; REVISED WELD: .25 WAS .125	24MAY04	MILLER
1-5A		ADDED DIMENSION .500 TYP	25MAY04	arg



- NOTES:
- 22.500 IS FINISH DIMENSION AFTER MACHINING.
 - WELD ITEM 4 TO ITEM 1 BEFORE MACHINING.
 - DRILL & TAP HOLES FOR HELICOIL INSERTS AFTER WELDING & MACHINING.

QTY	ITEM NO.	PART OR IDENTIFYING NO.	DESCRIPTION	MATERIAL SPECIFICATION	NOTES
1	4	65630-D-54000-39	BOSS	ALUMINUM	2
1	3	-	TUBE, 2 IN OD X 4 IN LG	ALUMINUM	-
1	2	65630-D-54000-36	CONFLAT FLANGE 4-1/2 IN OD X 2 IN BORE	ALUMINUM	-
1	1	65630-E-54000-30	MIDDLE RING	ALUMINUM	2

DOCUMENT CONTROL STAMP

ISO

MATERIAL: SEE PARTS LIST

FINISH: 125 UNLESS OTHERWISE NOTED

MACHINED: 125 UNLESS OTHERWISE NOTED

SPRINGS & BREAK: ALL SHARP EDGES

DO NOT SCALE DRAWING

TRACKING NO.: PROJ. PH. TARGET OXYGENIC LBRV. B1011E-01-014

APPROVALS:

CHECKED	DATE
A. CAVALIA	24FEB03
A. CAVALIA	29MAR03
D. HICHERTHAM	29MAR03

HALL A

Thomas Jefferson National Accelerator Facility
United States Department of Energy

BIG BITE EXP'S E01-014 & E01-015
SCATTERING CHAMBER SUBASSY
MIDDLE RING WELDMENT

SIZE DWG. NO. 65630-D-54000-31

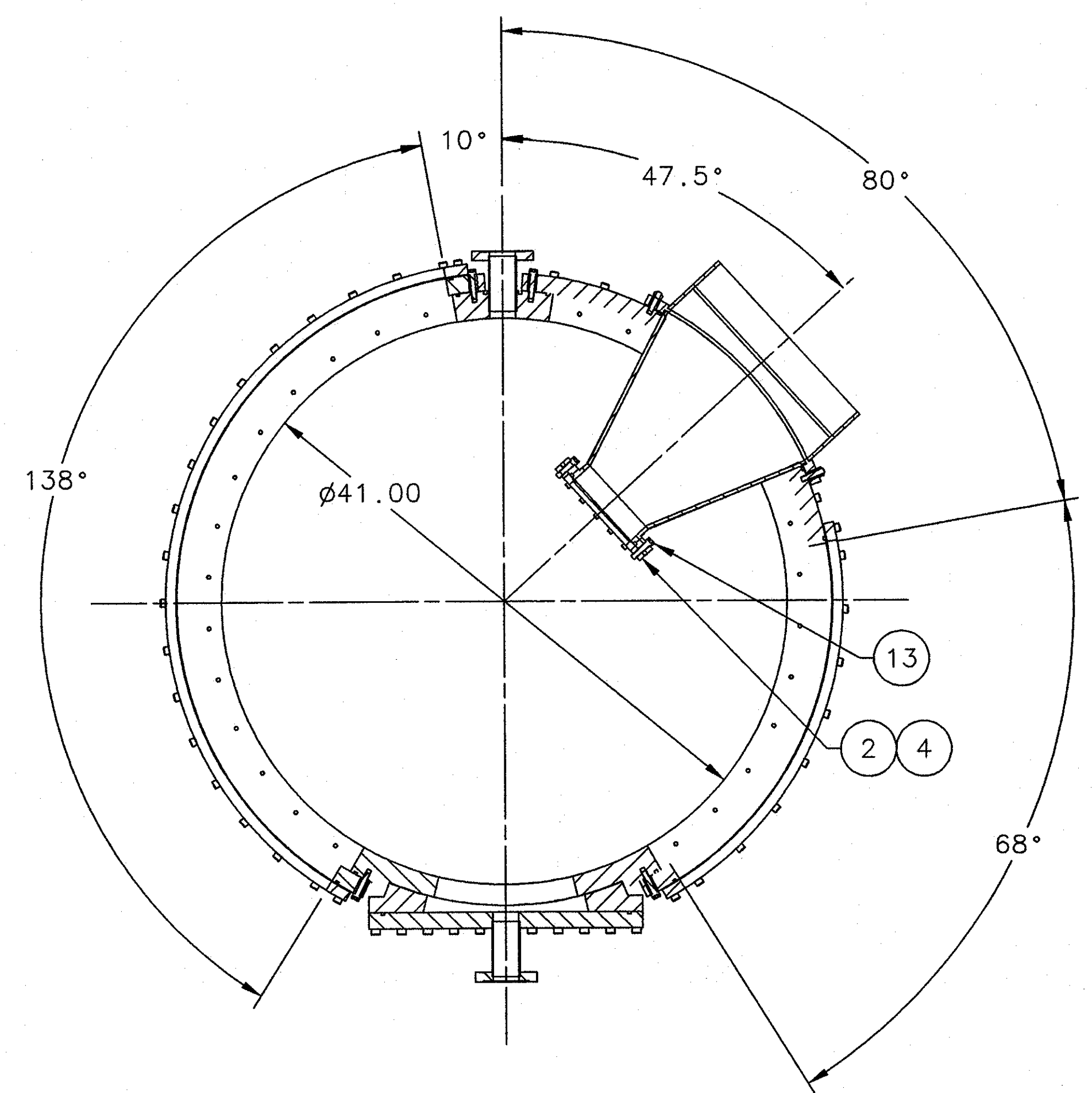
APPROVED: D

SCALE: 1:8

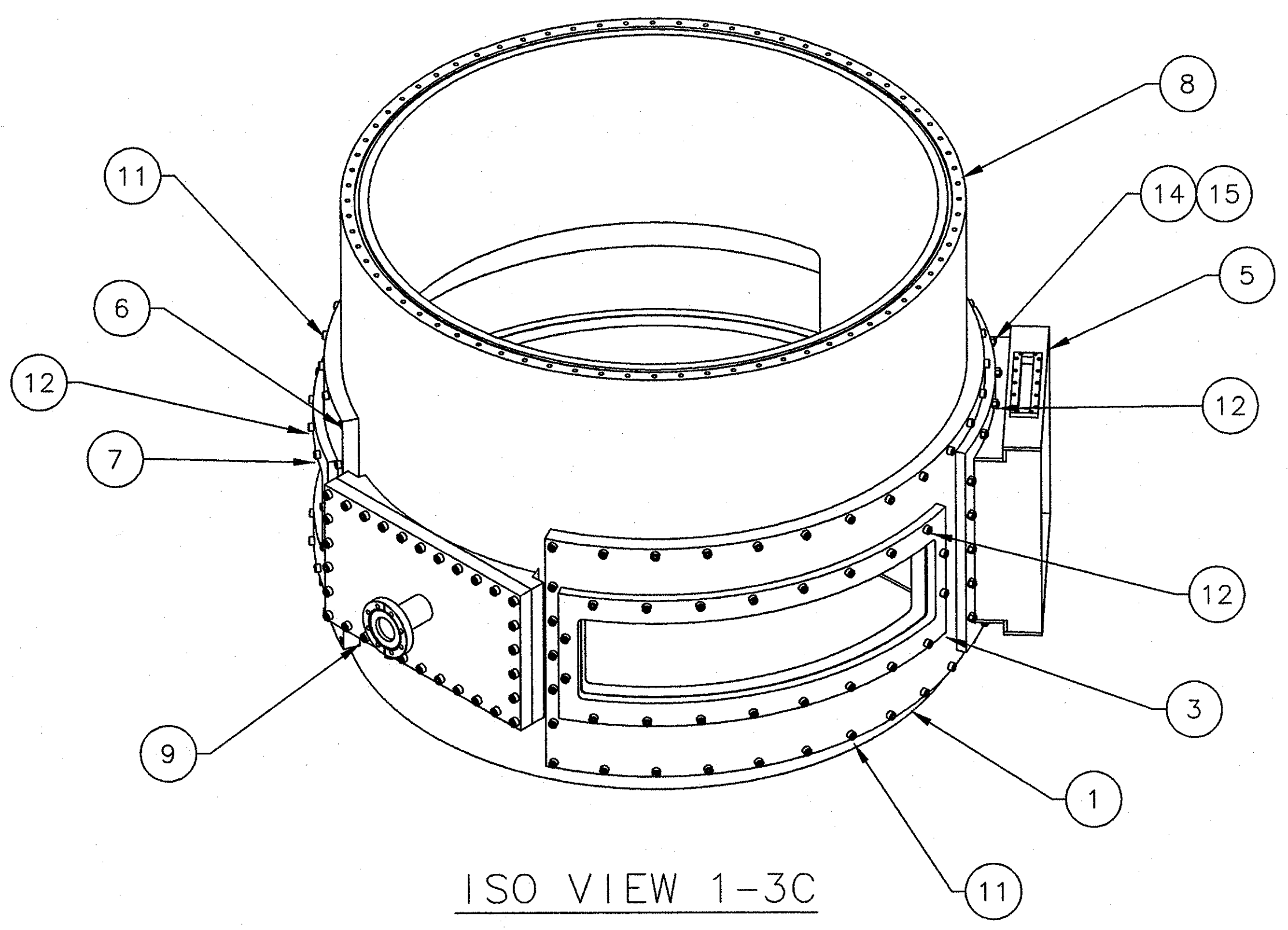
150 W 83RD ST. 65630-E-54000-40 SHEET 1 OF 1

8 7 6 5 4 3 2 1

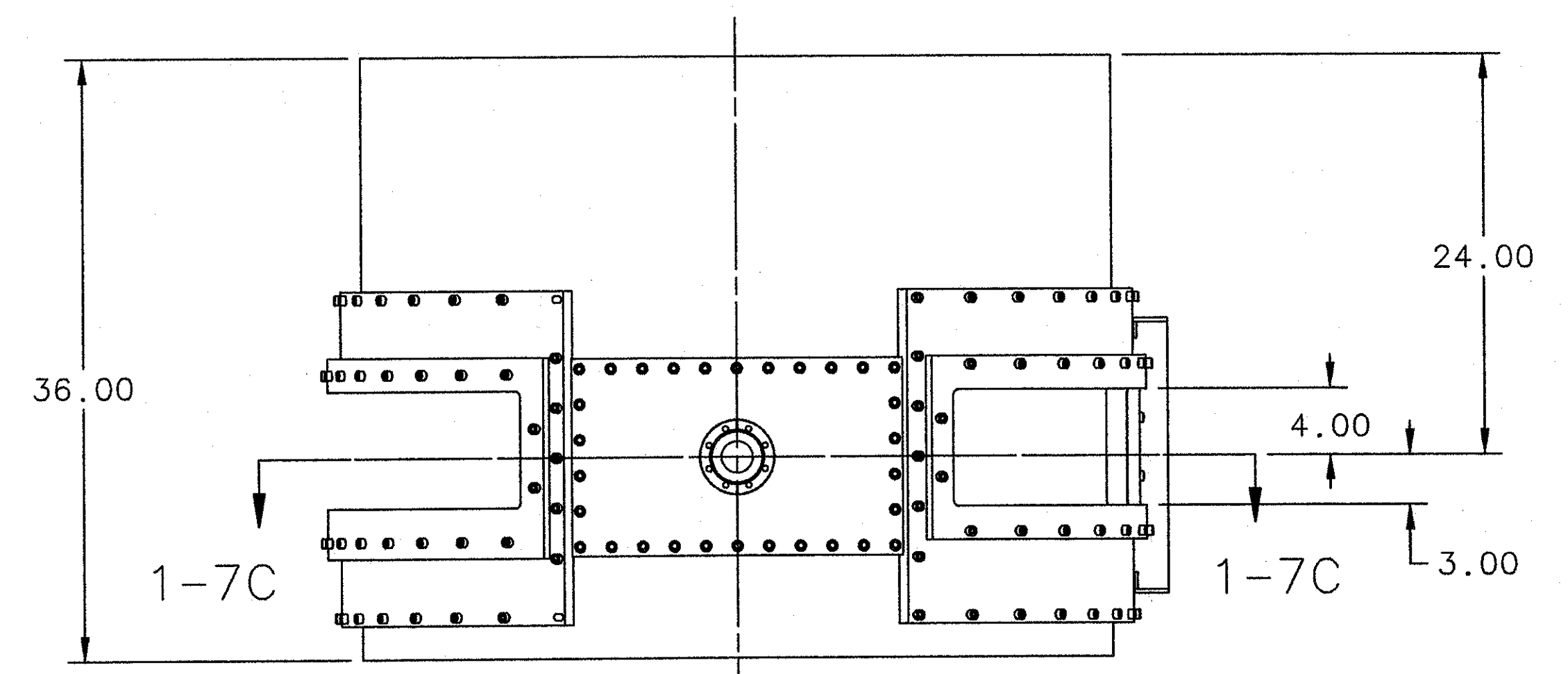
REVISION HISTORY				
ZONE	REV	DESCRIPTION	DATE	APPROVED
ALL	A	REVISED PICTORIALY TO SHOW CHANGES TO DESIGN OF ITEM 5 INV COFFEE FILTER REVISED ITEM 11 QTY WAS 86 ADDED ITEMS 14 & 15	06NOV07 06NOV07	MILLER CRJ



SECT VIEW 1-7C



ISO VIEW 1-3C



FRONT VIEW 1-7A

QTY REQD	ITEM NO.	PART OR IDENTIFYING NO.	NOMENCLATURE OR DESCRIPTION	MATERIAL SPECIFICATION	NOTES
18	15	-	HEX NUT 3/8-16	STAINLESS STEEL	*
18	14	-	STUD 3/8-16 X 1.75 LG	STAINLESS STEEL	*
20	13	McMASTER CARR 93235A926	SHCS 3/8-16 X 1.50 VENTED	STAINLESS STEEL	-
78	12	-	SHCS 3/8-16 X 1.25	STAINLESS STEEL	-
68	11	-	SHCS 3/8-16 X 1.75	STAINLESS STEEL	*
-	10	-	-	-	-
1	9	65630-54000-37	EXIT FLANGE WELDMENT	ALUMINUM	-
1	8	65630-54000-31	MIDDLE RING WELDMENT	ALUMINUM	-
1	7	A04018-03-03-0002	WINDOW FRAME LEFT 13 TO 145 DEG	ALUMINUM	-
1	6	A04018-03-03-0001	CLAMSHELL LEFT 13 TO 145 DEG	ALUMINUM	-
1	5	A04007-03-01-0100	INV COFFEE FILTER WLDMNT	ALUMINUM	-
1	4	A04007-03-01-0004	TGT WINDOW 6 IN SQ.	ALUMINUM	-
1	3	A04007-03-01-0003	WINDOW FRAME HRSBR PI ZERO	ALUMINUM	-
1	2	A04007-03-01-0002	TGT FLANGE 6 IN SQ	ALUMINUM	-
1	1	A04007-03-01-0001	CLAMSHELL W TWO OPENINGS	ALUMINUM	-

DOCUMENT CONTROL STAMP DC	DIM & TOL PER ASME Y14.5 UNLESS OTHERWISE SPECIFIED DIMENSIONS ARE IN INCHES TOLERANCES ARE: FRACTIONS DECIMAL ANGLES ± N/A .XX ± .01 ± .50° .XXX ± .005	TRACKING NO. N/A		United States Department of Energy Jefferson Lab Ottawa Jefferson National Accelerator Facility Newport News Virginia	
		APPROVALS		DATE	
MATERIAL SEE PARTS LIST	THIRD ANGLE PROJECTION	DRAWN J. MILLER	12JUL07		
FINISH MACHINED SURFACES UNLESS OTHERWISE NOTED DEBURR & BREAK ALL SHARP EDGES		CHECKED A. CAVALYA	25JUL07		
DO NOT SCALE DRAWING		APPROVED D. HIGINBOTHAM	25JUL07		
		APPROVED P. BRINDZA	26JUL07		
		SIZE DWG. NO. D A04007-03-01-0000	REV. A		
		SCALE 1:4	USED ON ASSY NO. A04007-03-00-0000		SHEET 1 OF 1