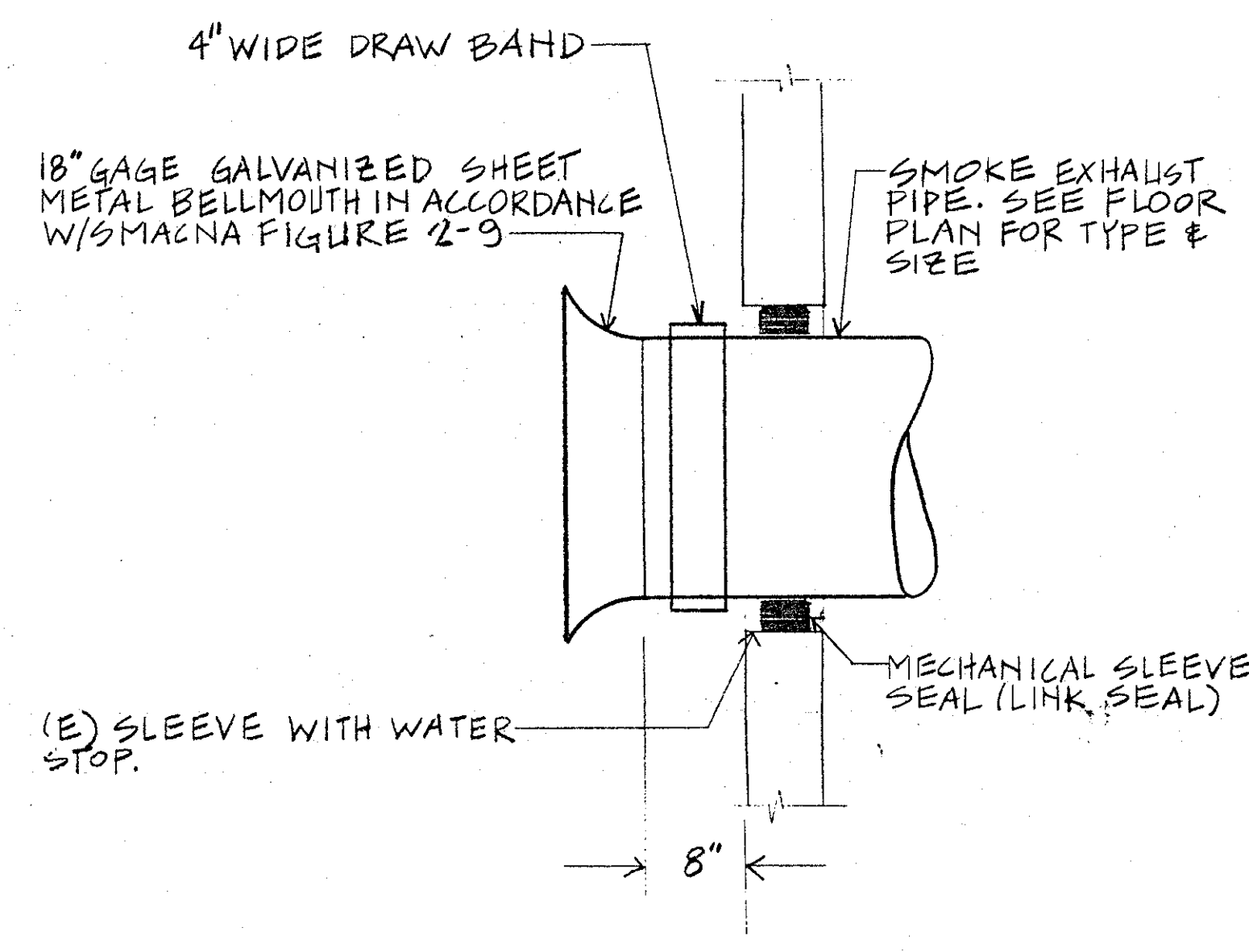
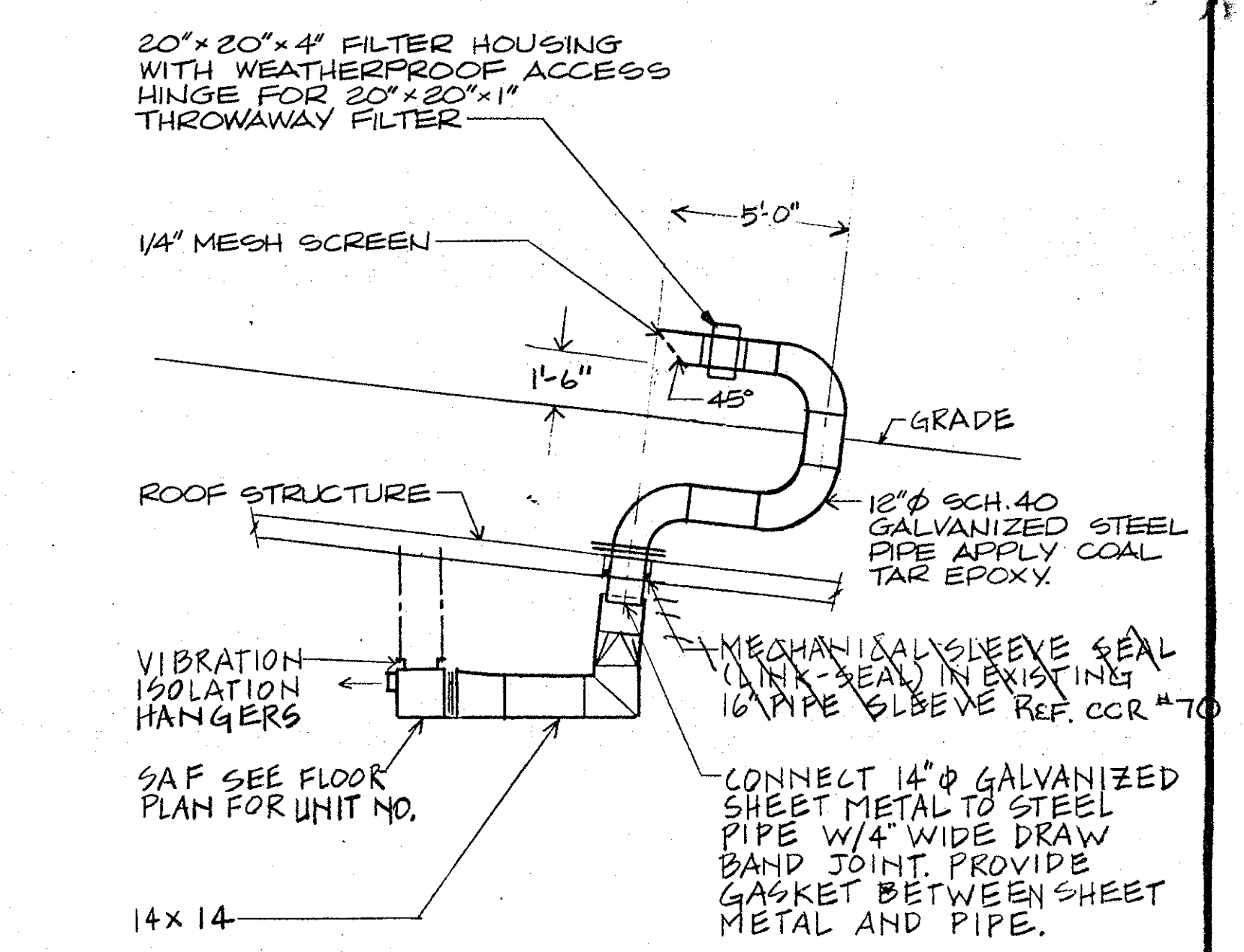


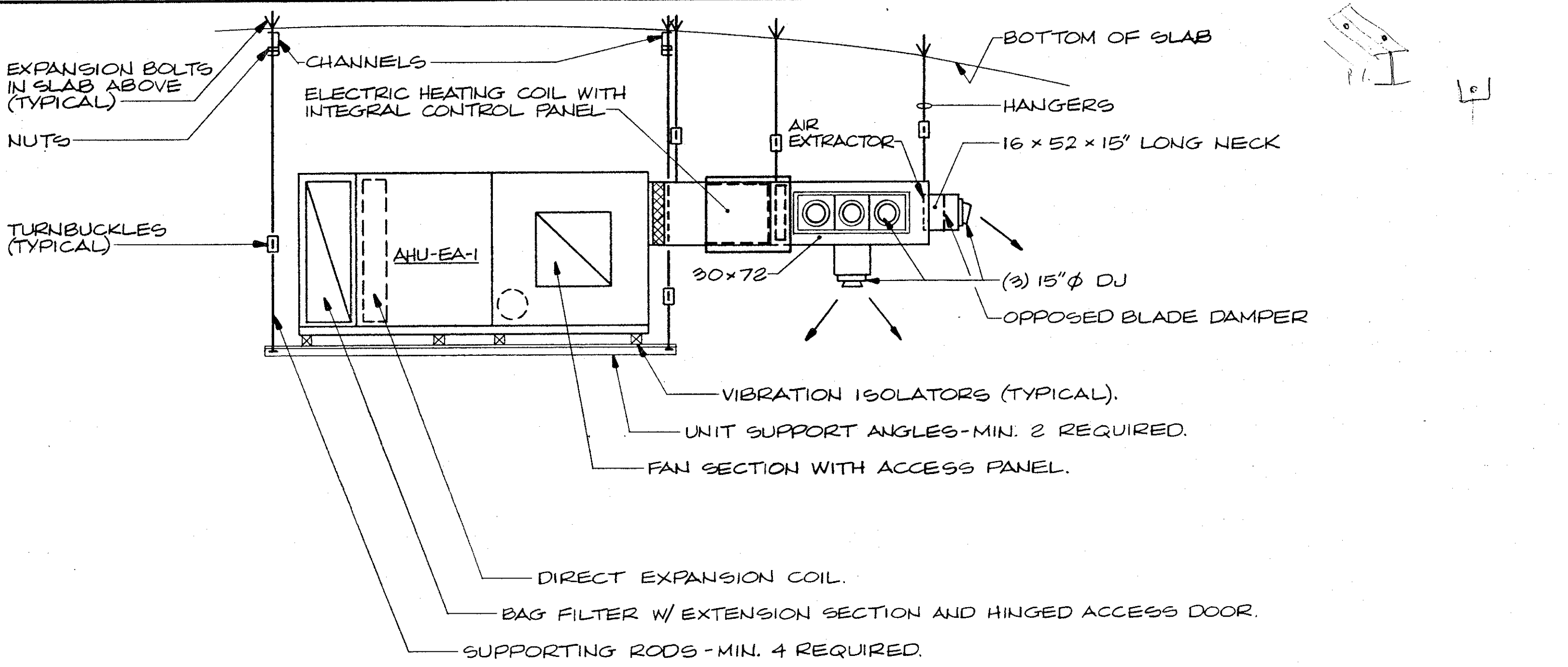
SECTION 1
M-204
SCALE: 1/8" = 1'-0"



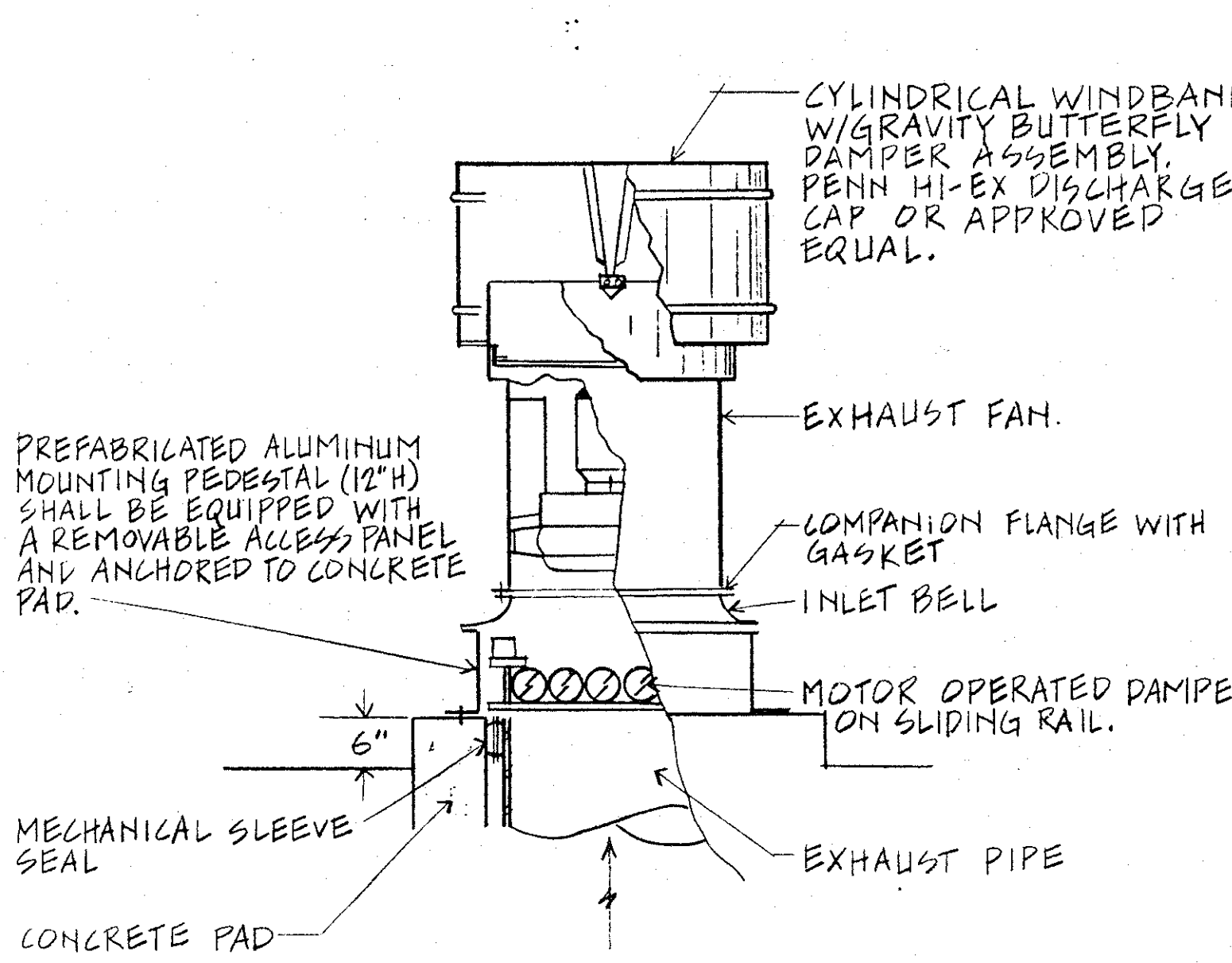
SECTION 4
M-201, M-202 & M-203
SCALE: NONE



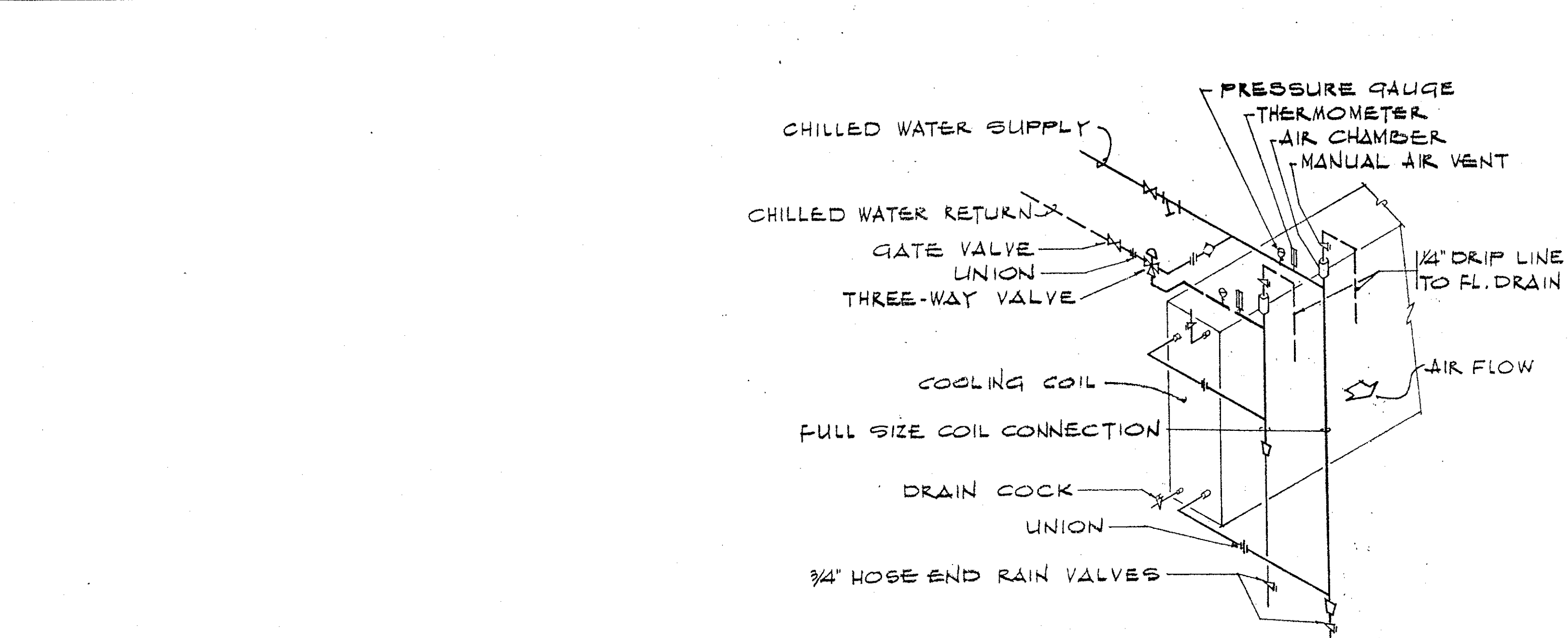
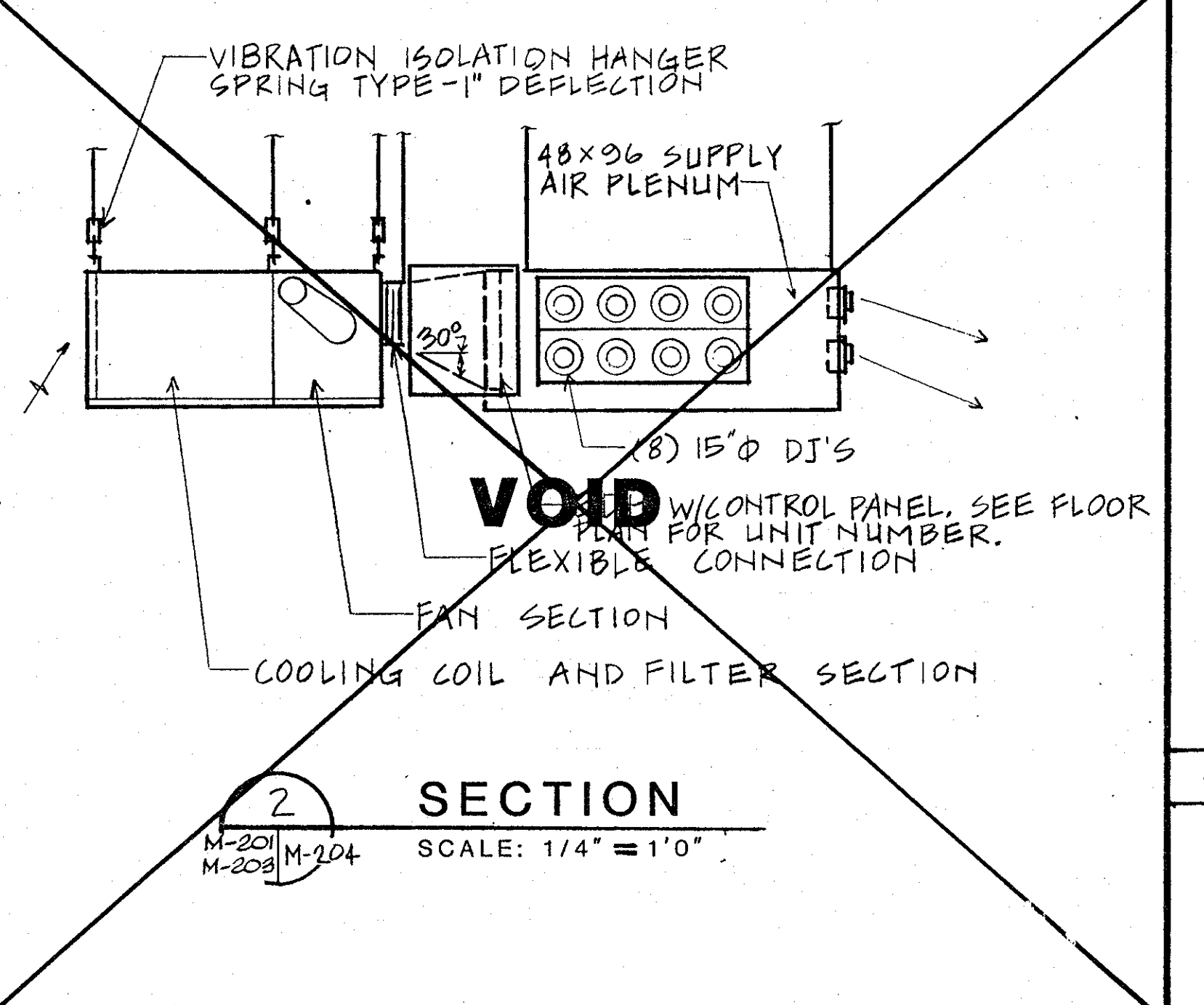
SECTION 7
M-201, M-202 & M-203
SCALE: 1/4" = 1'-0"



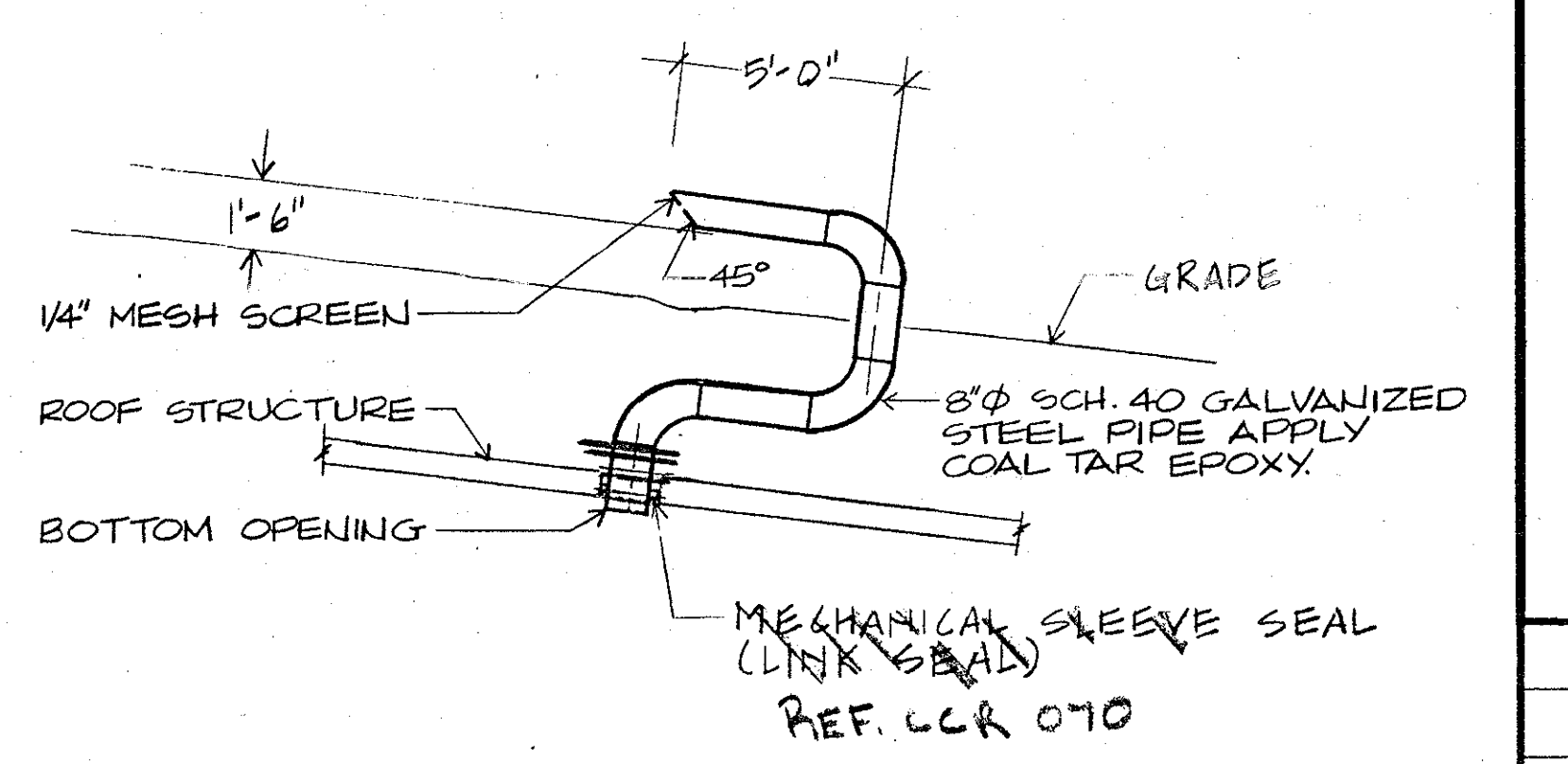
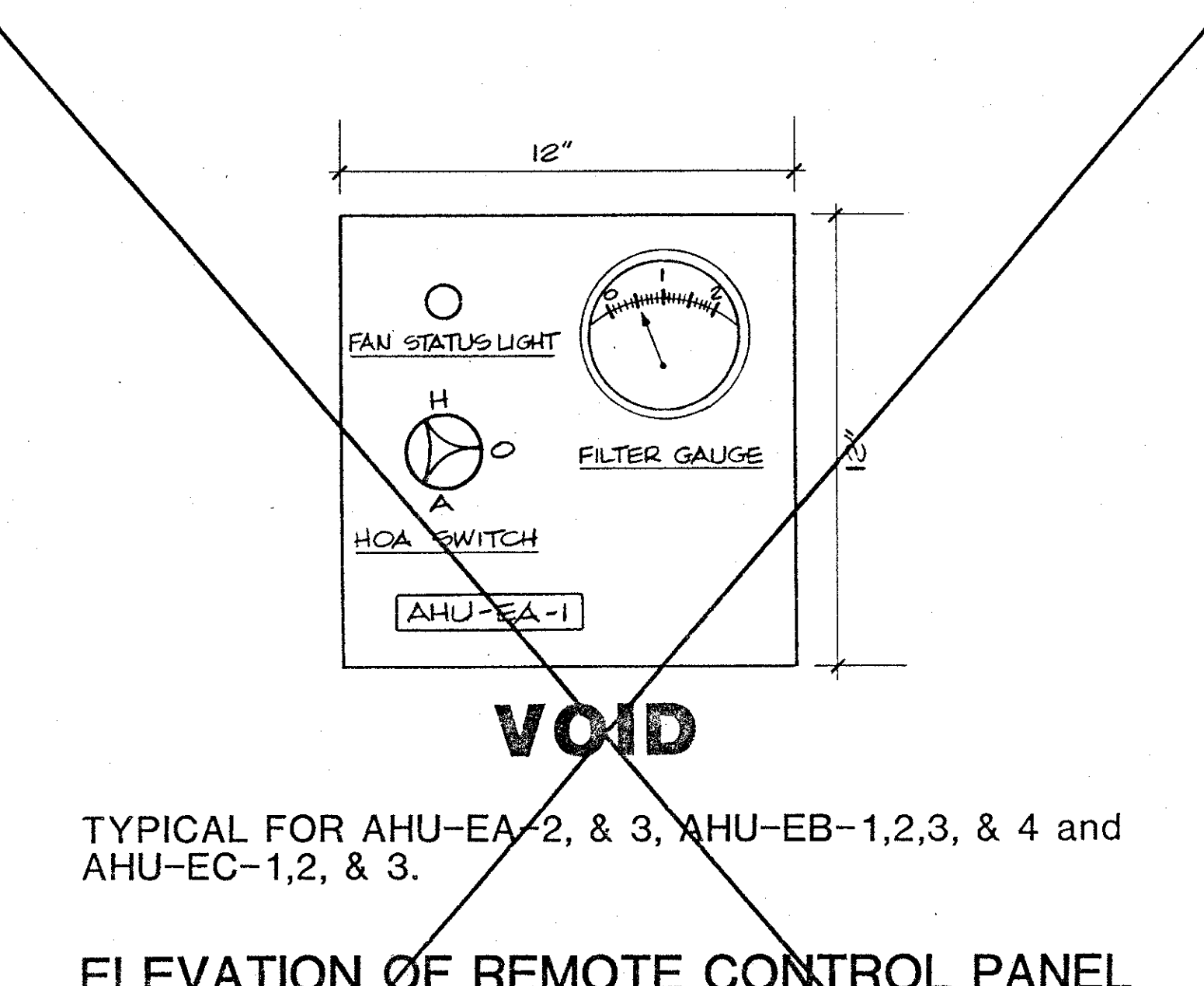
SECTION 2
M-201, M-202 & M-203
SCALE: 1/4" = 1'-0"



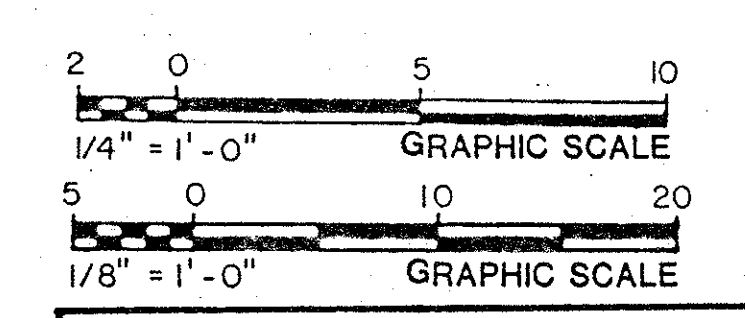
SECTION 5 EXHAUST FAN INSTALLATION DETAIL
M-201, M-202 & M-203
SCALE: NONE



COOLING COIL PIPING DETAIL
SCALE: NONE



SECTION 3 HYDROGEN EXHAUST DETAIL
M-201, M-202 & M-203
SCALE: 1/4" = 1'-0"



STV/SEELYE STEVENSON VALUE & KNECHT
ENGRS & PLANNERS
10-12-93
DRAWN BY: AA, DESIGNED: WYC, CHECKED: HY, APPROVED: JRB

GENERAL NOTES			
REV. 0	ISSUED FOR BID	Per	10/12/90
REV	DESCRIPTION	INITIAL	DATE
SURA Southeastern Universities Research Association, Inc. 12070 Jefferson Avenue Newport News, Virginia 23606			
CEBAF CONTINUOUS ELECTRON BEAM ACCELERATOR FACILITY			
DMJM Daniel, Mann, Johnson, & Mendenhall Washington, D.C.			
DES BY	DATE RECOMMENDED	DRAWN APPROVED	SURA
DRAWN BY	DATE	DATE	DATE
CHK. BY	DATE	DATE	DATE
FACILITY NAME END STATIONS ABOVE GROUND DESIGN PACKAGE END STATIONS SECTIONS AND DETAILS			
SCALE AS SHOWN			SHEET NO.
CEBAF DWG. NO. 90-M-8-805-108			M-204

AIR HANDLING UNIT SCHEDULE

UNIT NO.	AREA SERVED	UNIT TYPE	FAN SECTION									COOLING COIL ⑥				ELECTRIC HEATING COIL ③				FILTER			BASIS OF DESIGN					
			CFM	FAN TYPE	MIN WHEEL DIAMETER INCHES	STATIC PRESSURE IN W.G. ①		MOTOR				AIR TEMP. °F				MAX. AIR PRESS. DROP IN W.G.	MAX. AIR VEL. FPM	CFM	CAP. (KW)	NO. OF STAGES	MAX. FACE VEL.	ELECTRICAL CHARACTERISTIC		TYPE	EFFICIENCY	(NO.) SIZE INCHES		
						EXTERNAL	TOTAL	HP	VOLTS	PHASE	Hz	ENTERING		LEAVING								VOLTS					PHASE	
												D.B.	W.B.	D.B.	W.B.													
AHU-EA-1 THRU 3	END STATION A	HORIZONTAL MODULAR	25000	AIR FOIL	32-3/8"	1.0	3.0	20	460	3	60	25000	74.2	60.6	54.6	52.8	450	0.9	25000	120	5	800	480	3	②	80%	(3) 12x24 (15) 24x24	CARRIER 39ED48
AHU-EB-1 THRU 3	END STATION B	VERTICAL MODULAR	9100	AIR FOIL	--	1.0	3.0	7-1/2	460	3	60	9100	74.6	61.2	50.8	50.2	450	0.9	9100	60	3	800	480	3	⑤	30%	(3) 12x24 (15) 24x24	CARRIER 39ED19
AHU-EC-1 THRU 3	END STATION C	HORIZONTAL MODULAR	25000	AIR FOIL	32-3/8"	1.0	3.0	20	460	3	60	25000	74.2	60.6	52.7	52.0	450	0.9	25000	150	5	800	480	3	②	80%	(3) 12x24 (15) 24x24	CARRIER 39ED48
AHU-SB-4	SB-4	HORIZONTAL MODULAR	7000	AIR FOIL		1.75	3.21	7-1/2	460	3	60	7000	73.6	66.4	51.1	51.0	500	0.9	7000	75	3	800	480	3	②	30%	-	CARRIER 18-SR

AIR HANDLING UNIT SCHEDULE NOTES:

- ① PRESSURE DROP THRU FILTER SHALL BE CONSIDERED AS A PART OF THE "INTERNAL" S.P.
- ② PROVIDE EXTENDED SURFACE 4 INCHES THICK PLEAT FILTERS WITH SIDE ACCESS DOORS.
- ③ ALL ELECTRIC HEATING COILS SHALL BE DUCT MOUNTED TYPE.
- ④ PROVIDE AN ACCESS PANEL IN FAN SECTION.
- ⑤ PROVIDE EXTENDED SURFACE 4 INCHES THICK PLEAT FILTERS TO COVER THE ENTIRE COOLING COIL SURFACE.
- ⑥ ALL COOLING COILS SHALL BE OF THE DIRECT EXPANSION TYPE EXCEPT AHU-EB-1 THRU 3. AHU-EB-1 THRU 3 SHALL BE OF THE CHILLED WATER TYPE WITH 44°F ENTERING AND 56°F LEAVING WATER TEMPERATURE, 46.4 GPM AND 10 FT. PRESSURE DROP MAXIMUM.
- ⑦ UNIT-MOUNTED HEATING COIL

ROOF TOP UNIT SCHEDULE

UNIT NO.	AREA SERVED	COMPRESSOR		OUTDOOR AIR FANS		CONDENSER COIL	INDOOR AIR FAN				TOTAL COOLING MBH AT 100°F AMBIENT TEMP	SENSIBLE COOLING MBH	EVAPORATOR COIL				REHEAT		FILTER N.B.S. EFF.	ELECTRICAL CHARACTERISTICS				TYPE	BASIS OF DESIGN		
		NO.	FLA/EACH AT 460 VOLTS	CAPACITY STEPS	NO. - SIZE		MOTOR HP	FACE AREA (SQ. FT.)	CFM	(NO.) SIZE IN.			EXT. S.P. IN. WG	HP	SOUND POWER LEVEL AT 3RD OCTAVE BAND (DB)	ENT. AIR °F	LEAVING AIR °F	KW		CAPACITY CONTROL STEPS	VOLTS	PHASE	Hz			TOTAL FLA	
																											D.B.
RTU-CH-1 THRU 3	COUNTING HOUSE A, B & C	2	13.5	2	2 - 26"Ø	1	49	6000	(2) 10x10	1.0	6	81	167	133	72.0	61.0	51.5	51.0	30	2	10X	460	3	60	95.0	SIDE DISCHARGE	CARRIER 50PQ 016
RTU-CH-4	CH WORK ROOM	2	13.5	2	2 - 26"Ø	1	22.2	6000	(2) 10x10	1.0	5	81	167	133	72.0	61.0	51.5	51.0	30	2	10X	460	3	60	95.0	DOWN DISCHARGE	CARRIER 50PQ 016

CONDENSING UNIT SCHEDULE

UNIT NO.	AREA SERVED	CAPACITY (MBH) AT 95°F AMBIENT	COMPRESSOR		CONDENSER FANS			BASIS OF DESIGN
			QTY	KW	AIR FLOW	QTY	HP	
CU-EA-1 THRU 3	END STATION A	552.5	2	54.8	VERTICAL	6	1/2	CARRIER 38 AE 054
CU-EC-1 THRU 3	END STATION C	595.8	2	54.8	VERTICAL	6	1/2	CARRIER 38 AE 054
CU-SB-4-1	SB-4	22.2	1	31	VERTICAL	2	1	CARRIER 38 AE 054

NOTES: 1. UNIT CHARACTERISTICS SHALL BE 460 VOLTS, 3 PHASE, 60 HZ.

ELECTRIC UNIT HEATER SCHEDULE

UNIT NO.	LOCATION	AREA SERVED	TYPE	CAPACITY (KW)	FAN DATA		ELECT. CHAR.		BASIS OF DESIGN (CHROMALOX)
					CFM	HP	VOLTS	PHASE	
EUH-CH-1	COUNTING HOUSE	PUMP ROOM	HORIZONTAL	2.6	310	1/50	277	1	LUH-02
EUH-CH-2 THRU 5	COUNTING HOUSE	2ND FLOOR	HORIZONTAL	7.5	670	1/10	480	3	LUH-07
EUH-B1-1 & 2	SERVICE BLDG. 1 & 2	EQUIPMENT ROOM	VERTICAL	10	710	1/25	480	3	VUH-10B
EUH-B1-3	SERVICE BLDG. 1	ELECTRICAL ROOM	VERTICAL	10	710	1/25	480	3	VUH-10B
EUH-B2-1	SERVICE BLDG. 2	ELECTRIC ROOM	HORIZONTAL	7.5	670	1/10	480	3	LUH-07
EUH-B3-1	SERVICE BLDG. 3	ELECTRIC ROOM	HORIZONTAL	5	420	1/50	480	3	LUH-05
EUH-B4-1, 2 & 3	SERVICE BLDG. 4	EQUIPMENT ROOM	HORIZONTAL	5	420	1/50	480	3	LUH-05
EUH-B5-1 & 2	SERVICE BLDG. 5	EQUIPMENT ROOM	HORIZONTAL	7.5	670	1/10	480	3	LUH-07
EUH-ESR-1	ESR BLDG.	COMPRESSOR ROOM	VERTICAL	30	2500	1/3	480	3	VUH-30
EUH-ESR-2	ESR BLDG.	REFRIGERATOR ROOM	VERTICAL	30	2500	1/3	480	3	VUH-30
EUH-BDA-1	BEAM DUMP COOLING BLDG A	EQUIPMENT ROOM	HORIZONTAL	5	420	1/50	480	3	LUH-05
EUH-BDB-1	BEAM DUMP COOLING BLDG B	EQUIPMENT ROOM	HORIZONTAL	5	420	1/50	480	3	LUH-05
EUH-BDC-1	BEAM DUMP COOLING BLDG C	EQUIPMENT ROOM	HORIZONTAL	5	420	1/50	480	3	LUH-05
EUH-EX-1	EXIT BUILDING	STAIR	HORIZONTAL	2.6	310	1/50	277	1	LUH-02

NOTES: 1. ALL HORIZONTAL UNITS SHALL BE PROVIDED WITH INTEGRAL THERMOSTAT.

ELECTRIC WALL HEATER SCHEDULE

UNIT NO.	BUILDING	AREA SERVED	UNIT TYPE	CAPACITY (KW)	BASIS OF DESIGN CHROMALOX
EWH-CH-4, 5, 7 AND 8	COUNTING HOUSE	TOILETS & CORRIDORS	SURFACE MOUNTED	2.0	RSF-420
EWH-CH-6	COUNTING HOUSE	CORRIDORS	RECESSED	2.0	RSF-420
EWH-TA-1	TRUCK ACCESS ENCLOSURE A	ELECTRICAL ROOM	SURFACE MOUNTED	2.0	RSF-420
EWH-TA-2	TRUCK ACCESS ENCLOSURE A	PUMP ROOM	SURFACE MOUNTED	2.0	RSF-420
EWH-TB-1 & EWH-TC-1	TRUCK ACCESS ENCLOSURE B & C	ELECTRICAL ROOM	SURFACE MOUNTED	2.0	RSF-420
EWH-TB-2 & EWH-TC-2	TRUCK ACCESS ENCLOSURE B & C	SPRINKLER ROOM	SURFACE MOUNTED	2.0	RSF-420
EWH-B1-1	SERVICE BUILDING 1	TOILET	SEMI-RECESSED	2.0	RSF-420
EWH-SB4-1, 2	SERVICE BUILDING 4	TOILET	RECESSED	2.0	RSF-420

NOTES: 1. ALL UNITS SHALL BE EQUIPPED WITH A FACTORY BUILT-IN THERMOSTAT AND A DISCONNECT SWITCH.
2. ALL UNITS ELECTRICAL CHARACTERISTIC SHALL BE 277 VOLTS, 1 PHASE.

CHILLER SCHEDULE

UNIT NO.	LOCATION	TYPE	CAPACITY TONS	COMPRESSOR					EVAPORATOR				CONDENSER				BASIS OF DESIGN	
				NO. OF COMP.	POWER INPUT (KW)	SATURATED DISCHARGE TEMP. (°F)	VOLTS	PHASE	HZ	GPM	PRESS. DROP FT. HD	WATER TEMP. °F		GPM	PRESS. DROP FT. HD	WATER TEMP. °F		
												ENT.	LVG.			ENT.		LVG.
C-B1-1	SERVICE BLDG. #1	PACKAGED HERMETIC RECIPROCATING	145	4	150	105	460	3	60	348	11	55	45	435	13	95	85	CARRIER 19EF-30HR160

PUMP SCHEDULE

UNIT NO.	PUMP LOCATION	SYSTEM SERVED	STATIC SUCTION PRESSURE (FT.)	DESIGN PRESSURE (PSIG)	GPM	TOTAL HEAD (FT.)	FLUID TEMP. (°F)	PUMP EFFICIENCY (%)	BHP	MOTOR					SEAL TYPE	TYPE	BASIS OF DESIGN	REMARKS
										HP	RPM	VOLTS	PHASE	Hz				
P-B1-1 & P-B1-2	SERVICE BLDG. #1	C-B1-1	25	150	348	75	44	81.0	9.0	10	1750	460	3	60	BALANCED MECHANICAL	END SUCTION BASE MOUNTED	AURORA 3X4X9B SERIES 340	P-B1-2 IS STAND BY

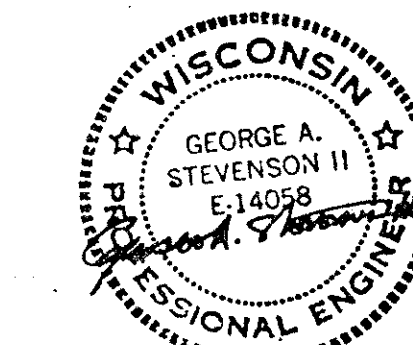
GENERAL NOTES

REV. 0 ISSUED FOR BID. 10/12/90

REV. DESCRIPTION INITIAL DATE

SURA Southeastern Universities Research Association, Inc.
12070 Jefferson Avenue
Newport News, Virginia 23606

CEBAF CONTINUOUS ELECTRON BEAM ACCELERATOR FACILITY



DES BY: JAS DATE: 10-12-90
DRAWN BY: MGH DATE: 10-12-90
CHK BY: JAS DATE: 10-12-90

FACILITY NAME: END STATIONS
DRAWING TITLE: ABOVE GROUND DESIGN PACKAGE

EQUIPMENT SCHEDULES

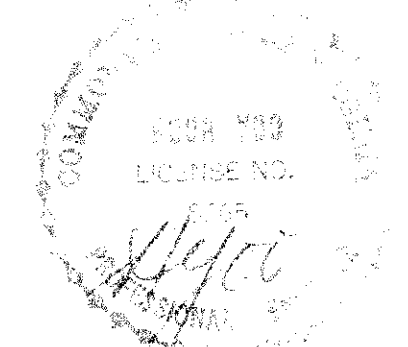
SCALE: NONE SHEET NO. M-901
CEBAF DWG. NO. 90-M-8-814-117

FAN SCHEDULE

UNIT NO.	AREA SERVED	FAN LOCATION	UNIT TYPE	CFM	MAXIMUM OUTLET VELOCITY FPM	FAN RPM	STATIC PRESSURE IN. W.G.	TOTAL PRESSURE IN. W.G.	MOTOR				DRIVE	SONES	ACCESSORIES	REMARKS	BASIS OF DESIGN
									HP	VOLT	PHASE	HZ					
EF-EA-1, 2 & 3	END STATION A SMOKE EXHAUST	OUTSIDE AT GRADE	VA	12,000	4100	3500	4.9	6.0	30	460	3	60	DIRECT	—		① ④ ⑥	JOY SERIES 1000 AXIVANE 23 1/4-17-3500
SAF-EA-1	END STATION A OUTSIDE AIR SUPPLY	END STATION A	C	1,000	1346	1690	.25	—	600 WATTS	115	1	60	DIRECT	6.8	BDD, SS	②	GREENHECK CEILING FAN CSP-165
EF-EB-1 & 2	END STATION B SMOKE EXHAUST	OUTSIDE AT GRADE	VA	25,500	4100	1770	4.0	5.0	40	460	3	60	DIRECT	—		① ④ ⑥	JOY SERIES 2000 AXIVANE 34-21-1770
SAF-EB-1	END STATION B OUTSIDE AIR SUPPLY	END STATION B	C	1,000	1346	1690	.25	—	600 WATTS	115	1	60	DIRECT	6.8	BDD, SS	②	GREENHECK CEILING FAN CSP-165
EF-EC-1, 2 & 3	END STATION C SMOKE EXHAUST	OUTSIDE AT GRADE	VA	15,000	3250	1770	3.6	4.3	20	460	3	60	DIRECT	—		① ④ ⑥	JOY SERIES 2000 AXIVANE 29 1/4-21-1770
SAF-EC-1	END STATION C OUTSIDE AIR SUPPLY	END STATION C	C	1,000	1346	1690	.25	—	600 WATTS	115	1	60	DIRECT	6.8	BDD, SS	②	GREENHECK CEILING FAN CSP-165
EF-BS-1	BEAM SWITCHYARD SMOKE EXHAUST	OUTSIDE AT GRADE NEAR EXIT BLDG.	VA	9,000	2250	1770	1.7	3.0	7 1/2	460	3	60	DIRECT	—		① ④ ⑤	JOY SERIES 1000 AXIVANE 27 1/4-17-1770
EF-BS-2	BEAM SWITCHYARD GENERAL EXHAUST	OUTSIDE AT GRADE NEAR ARC SERVICE BLDG.	PRV	3,000	1450	1020	.79	—	3/4	460	3	60	BELT	10.7	BDD, BS, DS, RC, SD		GREENHECK GB-24
EF-CH-1	CH-END STATION LEVEL SMOKE EXHAUST	CH-WALL	PWV	2,400	1069	945	.75	—	1/2	460	3	60	BELT	9.4	BS, DS, MOD		GREENHECK GWB-18
EF-CH-2	CH-TOILET EXHAUST	CH-WALL	PWV	1130	790	973	.50	—	1/4	115	1	60	BELT	7.9	BDD, BS, DS		GREENHECK GWB-14
EF-CH-3	CH-ELEVATOR MACHINE ROOM EXHAUST	CH-WALL	PWV	4,000	1002	577	.375	—	1/2	460	3	60	BELT	8.2	MOD, BS, DS, SD		GREENHECK GWB-24
EF-CH-4, 5, & 6	CH-CABLE SHAFT SMOKE EXHAUST	CH-ROOF	PRV	250	278	1287	.50	—	1/4	115	1	60	BELT	6.3	BDD, BS, DS, RC		GREENHECK GB-8
EF-CH-7	CH-ELECT. ROOM EXHAUST	CH-WALL	C	300	1045	1140	.25	—	1/15	115	1	60	DIRECT	1.9	BDD		GREENHECK CSP-152
EF-CH-8	CH-PUMP ROOM EXHAUST	CH-WALL	PWV	1650	735	731	.50	—	1/4	115	1	60	BELT	6.4	MOD, BS, DS,		GREENHECK GWB-18
SAF-CH-1	ES-MAKE UP AIR FOR SMOKE EXHAUST	CH-ROOF	HAR	16,800	1337	614	.50	—	5	460	3	60	BELT	32	MOD, DS, RC, FILTER		GREENHECK RPF-48H
SAF-CH-2	CH-ELEVATOR MACHINE ROOM MAKE-UP AIR	CH-ROOF	HAR	4,000	815	840	.50	—	3/4	460	3	60	BELT	23	MOD, DS, RC, FILTER		GREENHECK RPF-30H
SAF-CH-3	CH-PUMP ROOM MAKE-UP AIR	CH-ROOF	HAR	1,650	525	1010	.50	—	1/2	460	3	60	BELT	25	MOD, DS, RC, FILTER		GREENHECK RPF-24H
EF-TA-1	TRUCK ACCESS A EXHAUST	OUTSIDE AT GRADE	VA	36,000	3700	1770	1.75	2.61	30	460	3	60	DIRECT	—		① ④	JOY SERIES 1000 AXIVANE 42 1/4-17-1770
EF-TA-2	TRUCK ACCESS A ELECTRICAL ROOM EXHAUST	ELECTRICAL ROOM	C	520	761	1050	.25	—	260 WATTS	115	1	60	DIRECT	3.7	BDD		GREENHECK CSP-160
EF-TB-1	TRUCK ACCESS B EXHAUST	OUTSIDE AT GRADE	VA	36,000	3700	1770	1.75	2.61	30	460	3	60	DIRECT	—		① ④	JOY SERIES 1000 AXIVANE 42 1/4-17-1770
EF-TB-2	TRUCK ACCESS B ELECTRICAL ROOM EXHAUST	ELECTRICAL ROOM	C	520	761	1050	.25	—	260 WATTS	115	1	60	DIRECT	3.7	BDD		GREENHECK CSP-160
EF-TC-1	TRUCK ACCESS C EXHAUST	OUTSIDE AT GRADE	VA	36,000	3700	1770	1.75	2.61	30	460	3	60	DIRECT	—		① ④	JOY SERIES 1000 AXIVANE 42 1/4-17-1770
EF-TC-2	TRUCK ACCESS C ELECTRICAL ROOM EXHAUST	ELECTRICAL ROOM	C	520	761	1050	.25	—	260 WATTS	115	1	60	DIRECT	3.7	BDD		GREENHECK CSP-160
EF-BDA-1	BEAM DUMP ENCLOSURE A EXHAUST	BDCB A	IF	500	1923	2253	4.0	—	1/2	460	3	60	BELT	—		① ③	GREENHECK 7-P
EF-BDA-2	BEAM DUMP COOLING BUILDING A	BDCB A WALL	P	1400	439	802	.375	—	1/3	115	3	60	BELT	13.7	BDD	⑦	GREENHECK SPFE-24
EF-BDB-1	BEAM DUMP ENCLOSURE B EXHAUST	BDCB B	IF	500	1923	2253	4.0	—	1/2	460	3	60	BELT	—		① ③	GREENHECK 7-P
EF-BDB-2	BEAM DUMP COOLING BUILDING B	BDCB B WALL	P	1400	439	802	.375	—	1/3	115	3	60	BELT	13.7	BDD	⑦	GREENHECK SPFE-24
EF-BDC-1	BEAM DUMP ENCLOSURE C EXHAUST	BDCB C	IF	500	1923	2253	4.0	—	1/2	460	3	60	BELT	—		① ③	GREENHECK 7-P
EF-BDC-2	BEAM DUMP COOLING BUILDING C	BDCB C WALL	P	1400	439	802	.375	—	1/3	115	3	60	BELT	13.7	BDD	⑦	GREENHECK SPFE-24
EF-B1-1 & 2	SERVICE BLDG #1 EQUIP. ROOM-EXHAUST	EQUIP. ROOM-ROOF	PRV	6400	1019	372	.375	—	3/4	460	3	60	BELT	8.3	BDD, BS, DS, RC, SD		GREENHECK GB-33
EF-B1-3	SERVICE BLDG #1 ELEC. ROOM - EXHAUST	ELECTRICAL-ROOF	PRV	1000	1111	1409	.375	—	1/4	115	1	60	BELT	8.0	BDD, BS, DS, RC		GREENHECK GB-10
EF-B1-4	SERVICE BLDG #1 TOILET - EXHAUST	TOILET	C	120	544	1030	.25	—	75 WATTS	115	1	60	DIRECT	3.0	BDD, WALL CAP		GREENHECK SP-125
EF-B2-1	SERVICE BLDG #2	ROOF	PRV	2500	1046	651	.375	—	1/3	115	1	60	BELT	7.1	BDD, BS, DS, RC, SD		GREENHECK GB-21
EF-B3-1	SERVICE BLDG #3	ROOF	PRV	5500	797	339	.375	—	3/4	460	3	60	BELT	6.1	BDD, BS, DS, RC, SD		GREENHECK GB-36
EF-B4-1 & 2	SERVICE BLDG #4	ROOF	PRV	4500	910	400	.375	—	1/2	460	3	60	BELT	6.0	BDD, BS, DS, RC, SD		GREENHECK GB-30
EF-B5-1	SERVICE BLDG #5	ROOF	PRV	6000	869	348	.375	—	3/4	460	3	60	BELT	6.6	BDD, BS, DS, RC, SD		GREENHECK GB-36
EF-ESR-1 THRU 4	COMPRESSOR ROOM	ESR BLDG-ROOF	PRV	20000	1298	295	.375	—	3	460	3	60	BELT	16.3	BDD, BS, DS, RC, SD		GREENHECK GB-54
EF-ESR-5	REFRIGERATOR RM	ESR BLDG-ROOF	PRV	4200	849	411	.375	—	1/2	460	3	60	BELT	5.6	BDD, BS, DS, RC, SD		GREENHECK GB-30
EF-SB-4-3	SERVICE BLDG #4	ROOF	PRV	600	1111	845	.375	—	1/4	460	3	60	BELT		BDD, BS, DS, RC.		GREENHECK GB-10
EF-SB-4-3	SERVICE BLDG #4	ROOF	PRV	600	1111	845	.375	—	1/4	460	3	60	BELT		BDD, BS, DS, RC.		GREENHECK GB-10

FAN TYPE:	ACCESSORIES:
C CEILING FAN	BDD: BACK DRAFT DAMPER
HAR HOODED AXIAL FAN	BS: BIRD SCREEN
IC INDUSTRIAL CEILING FAN	DS: DISCONNECT SWITCH
IF INDUSTRIAL FAN	MOD: MOTOR OPERATED DAMPER
IF INDUSTRIAL FAN	RC: PREFABRICATED ROOF CURB
P PROPELLER	SD: SMOKE DETECTOR
PRV POWER ROOF VENTILATOR	SS: SOLID STATE SPEED CONTROLLER
PWV POWER WALL VENTILATOR	
VA VANE AXIAL FAN	

- NOTES:**
- AMCA ARRANGEMENT 4
 - INLINE HORIZONTAL INLET AND HORIZONTAL DISCHARGE
 - RADIAL TIP WHEEL
 - INLET BELLS, DISCHARGE CONES WITH FLANGES, SUPPORTS, COMPANION FLANGES
 - REVERSIBLE FAN
 - EF-EA-2, EF-EB-1, & EF-EC-2 ARE 2 SPEED MOTORS.
 - BELT GUARD AND MOUNTING WALL COLLAR



GENERAL NOTES

N.I.C. ITEMS
SEE FLOOR PLANS.

~~DEDUCTIVE ITEMS~~

1. EF-CH-2
2. SAF-CH-2

VOID

1. EF-BDB-1 AND EF-BDB-2 ARE N.I.C.

2	AS BUILT	CH	8/6/93
Δ	DELETE DEDUCTIVE ITEMS ADDED FANS	CH	10/12/90
REV. 0	ISSUED FOR BID	CH	10/12/90
REV.	DESCRIPTION	INITIAL	DATE

SURA Southeastern Universities Research Association, Inc.
12070 Jefferson Avenue
Newport News, Virginia 23606

CEBAF CONTINUOUS ELECTRON BEAM ACCELERATOR FACILITY

DMJM Daniel, Mann, Johnson, & Mendenhall
Washington, D.C.

DES BY	DATE	RECOMMENDED BY	DATE	APPROVED BY	DATE
DMJM	10/12/90	DMJM	10/12/90	DMJM	10/12/90
CHK BY	DATE	CHK BY	DATE	CHK BY	DATE
DMJM	10/12/90	DMJM	10/12/90	DMJM	10/12/90

FACILITY NAME: **END STATIONS ABOVE GROUND DESIGN PACKAGE**

DRAWING TITLE: **EQUIPMENT SCHEDULES**

SCALE: NONE SHEET NO. **M-902**

STV/SEELYE STEVENSON VALUE & KNECHT ENGINEERS & PLANNERS 10-12-90

DRAWN BY: AA DESIGNED BY: WVC CHECKED BY: HY APPROVED BY: JR

CEBAF DWG. NO. 90-M-B-315-118