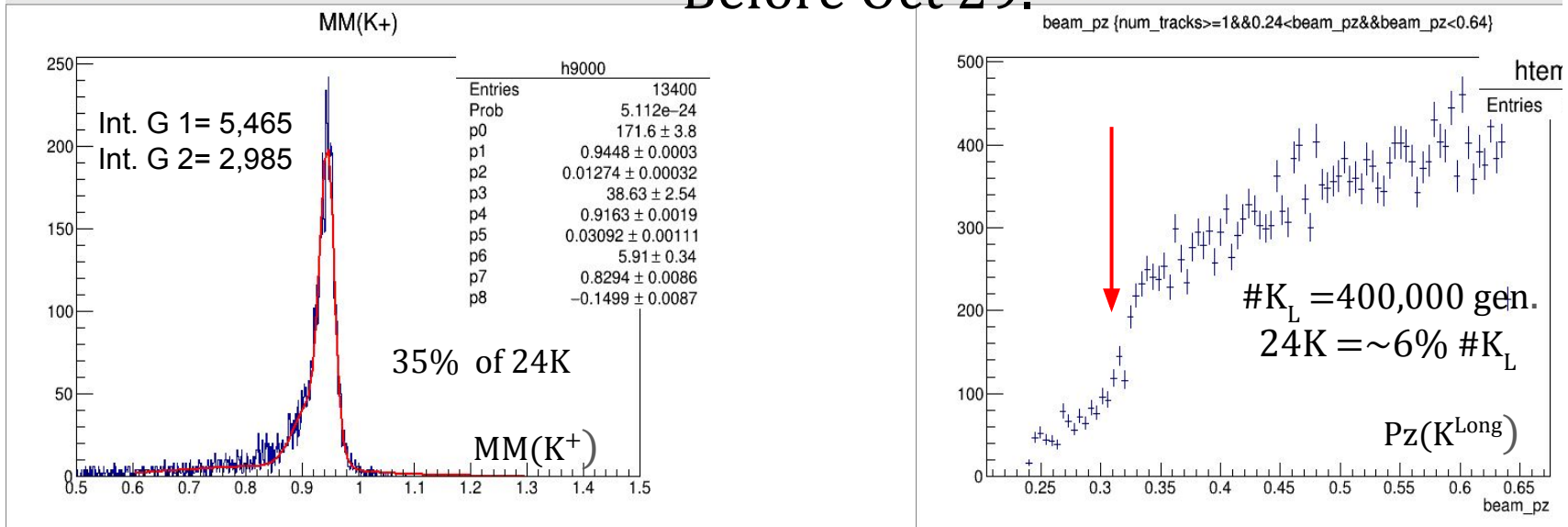
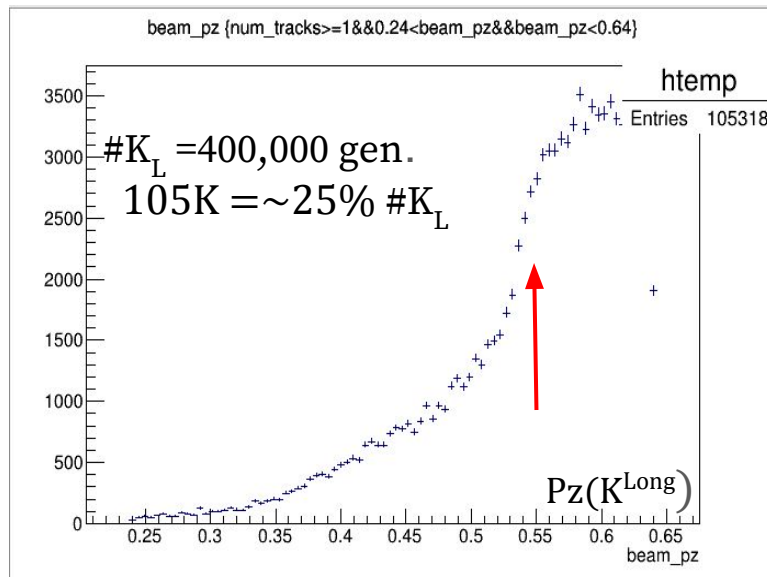
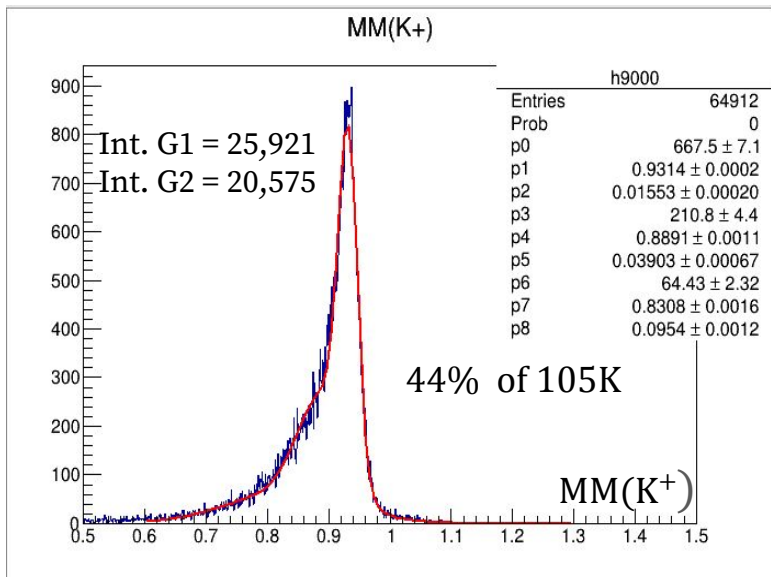


Generated $K^+ + n$ final state at $p_{KLong} = (0.24:10.64)$
 GeV/c
 Before Oct 29.



- Reconstruction efficiency drops at $p_{Klong} < 0.32$ GeV/c.

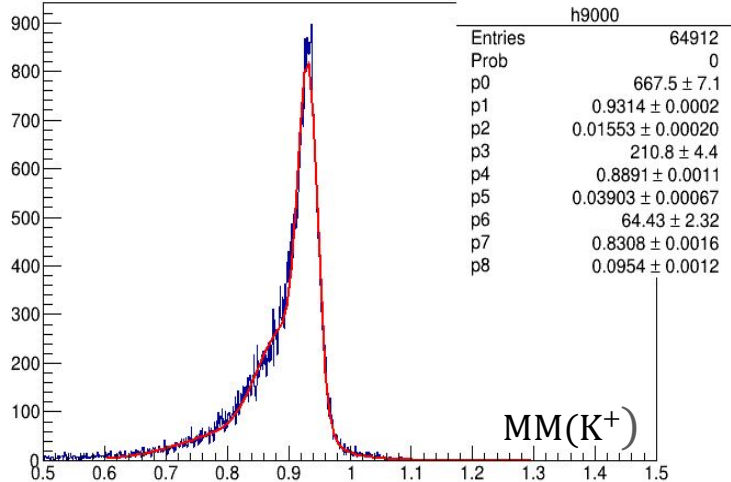
Generated $K^+ + n$ final state at $p_{KLong} = (0.24:0.64)$ GeV/c After Oct 29.



- Reconstruction efficiency drops at $p_{Klong} < 0.55$ GeV/c.
- Looks like we have a higher beam momentum threshold !
- B field changed to higher in GEANT model ? Inner CDC layers are not included ?

$$p_{K\text{Long}} = (0.24:0.64) \text{ GeV/c}$$

MM(K+)



$$p_{K\text{Long}} = (0.24:0.54) \text{ GeV/c}$$

MM(K+)

