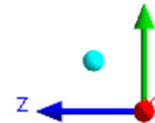
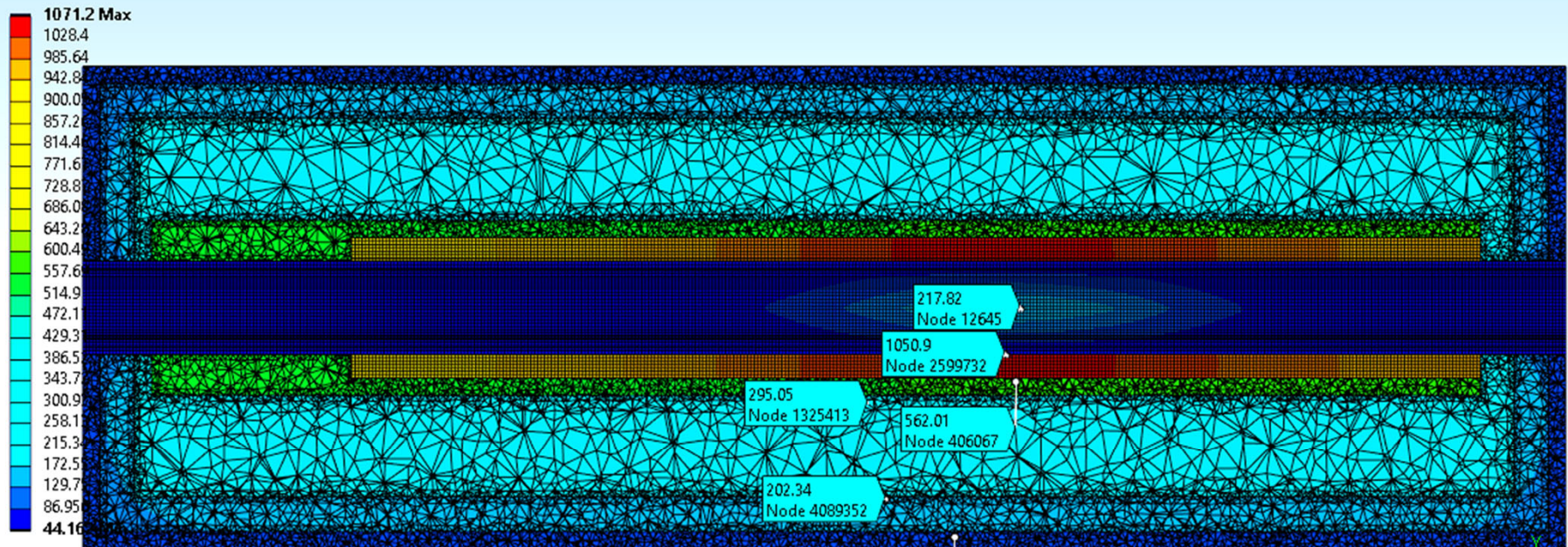


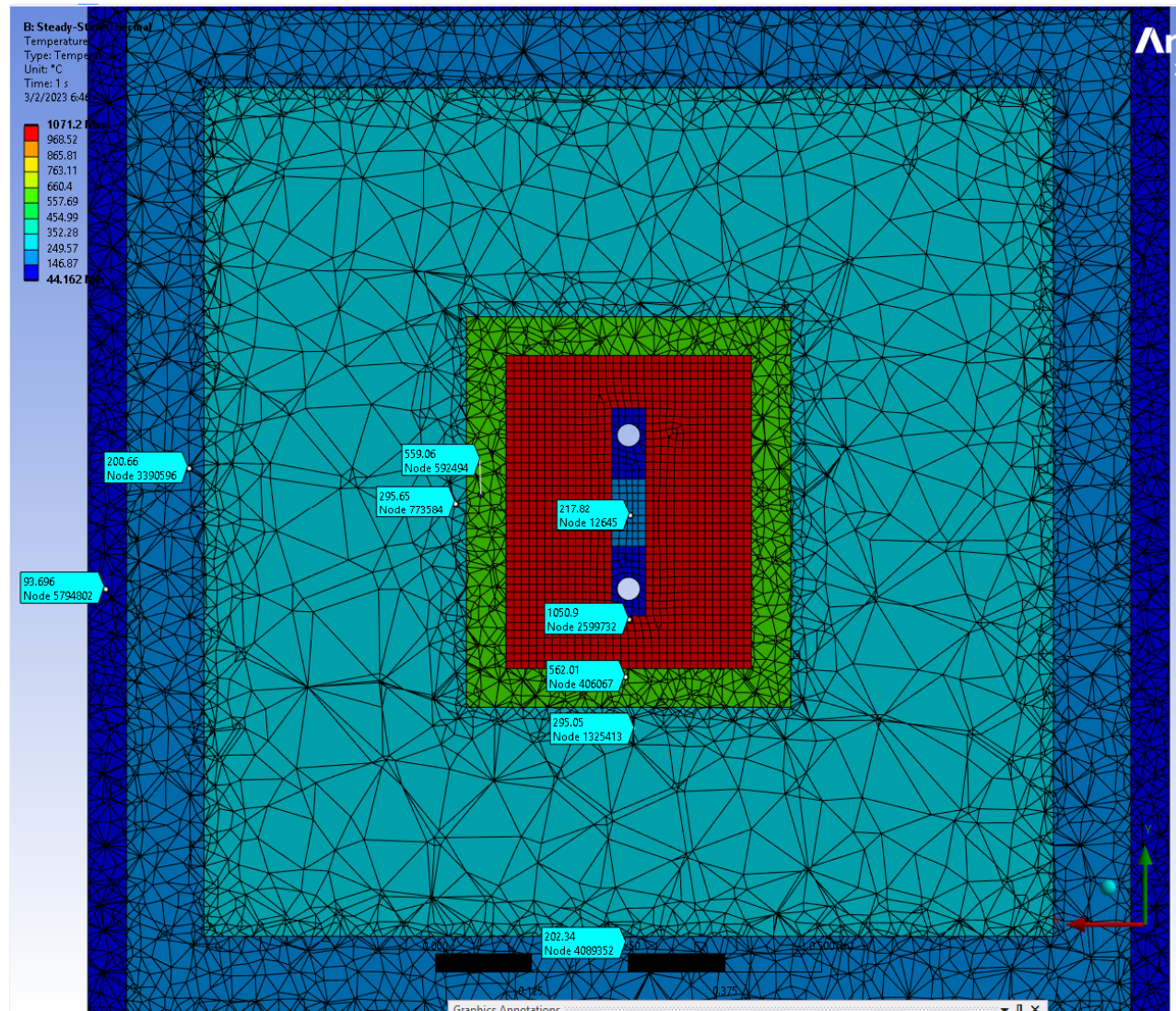
Coarse mesh, 1cm elements, 51KW heat, minimal conduction

B: Steady-State Thermal
Temperature
Type: Temperature
Unit: °C
Time: 1 s
3/1/2023 3:10 PM

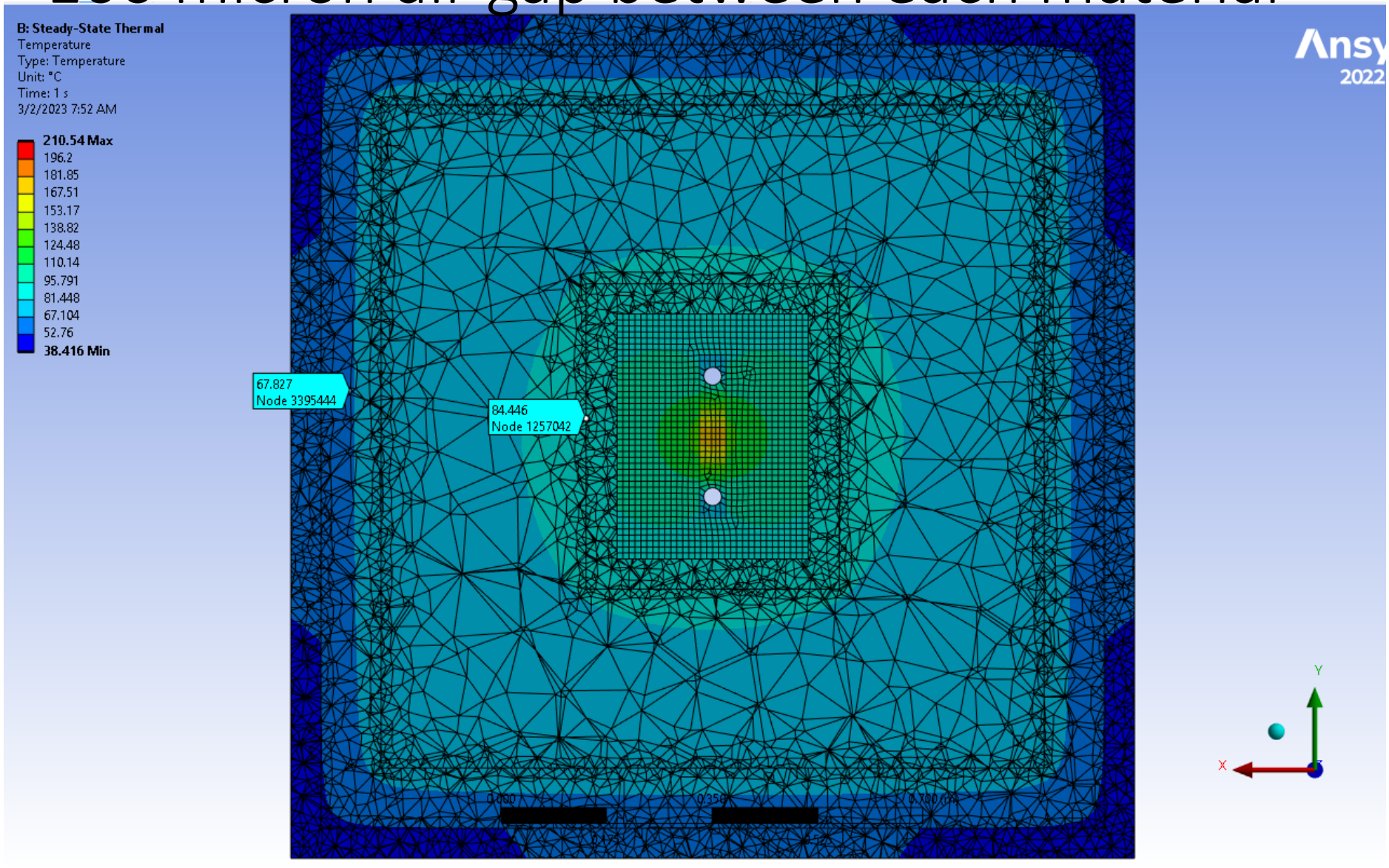
An
20



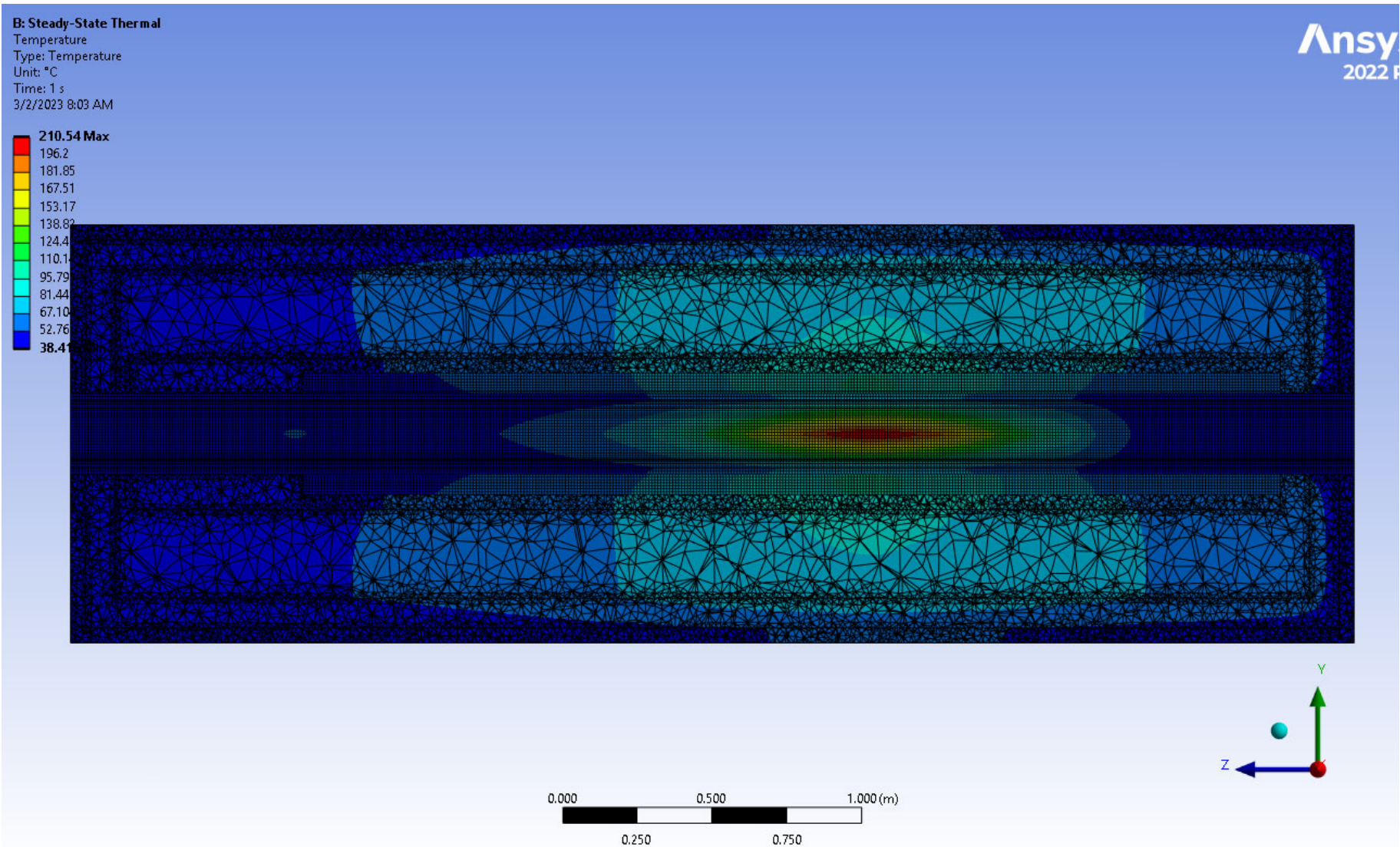
Coarse mesh, 1cm elements, 51KW heat, minimal conduction



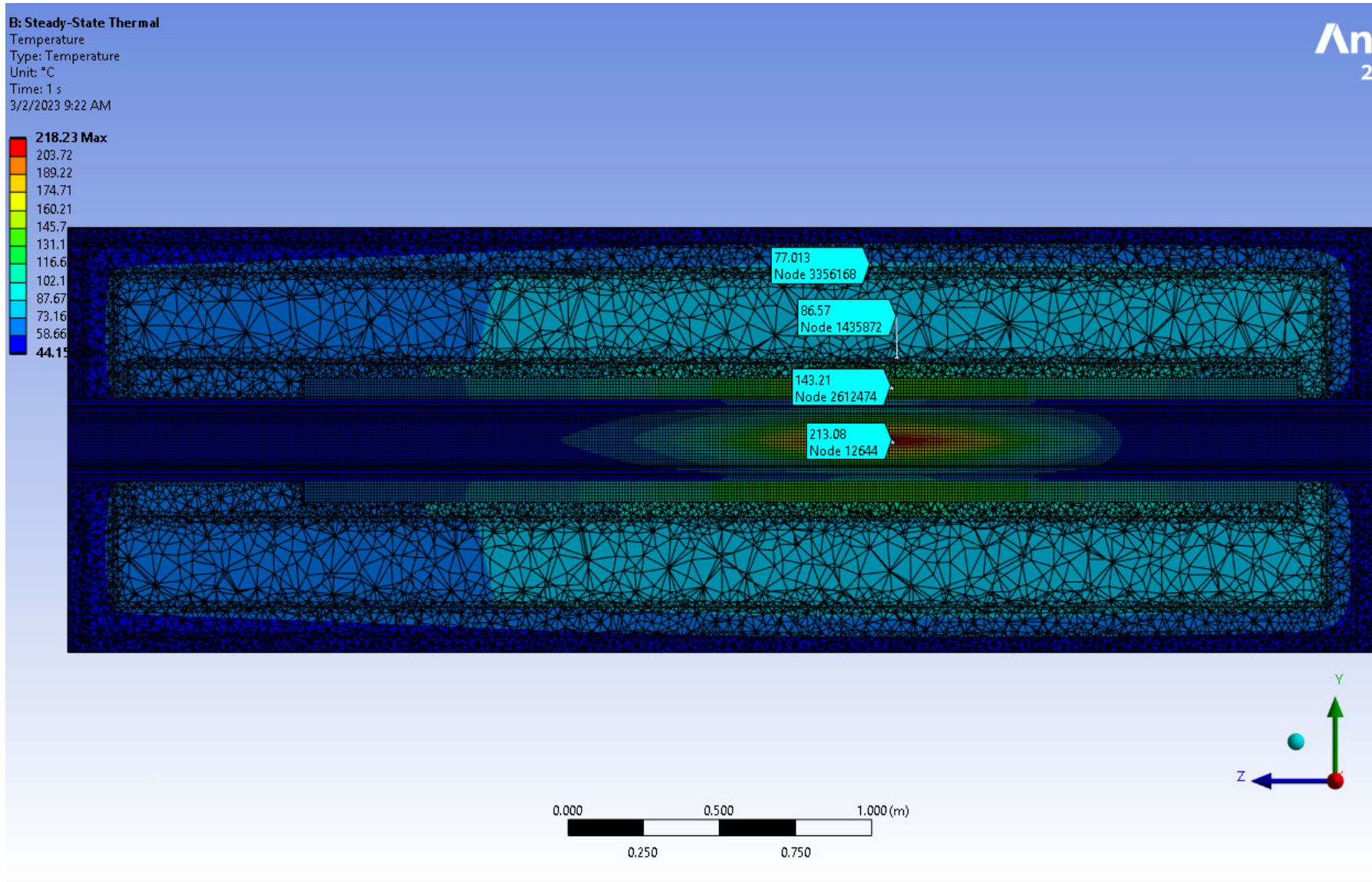
Coarse mesh, 1cm elements, 51KW heat, 100 micron air gap between each material



Coarse mesh, 1cm elements, 51KW heat, 100 micron air gap between each material



Coarse mesh, 1cm elements, 51KW heat, 1 mm air gap between each material



Coarse mesh, 1cm elements, 51KW heat, 1 mm air gap between each material, Cu->steel->tungsten->lead->poly->lead

