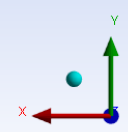
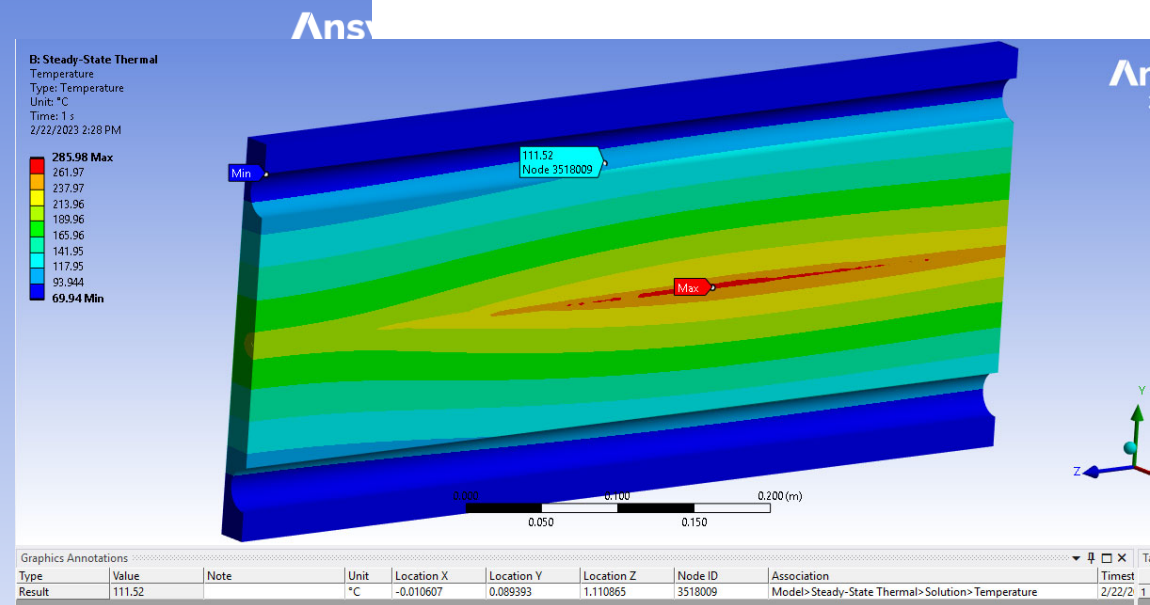
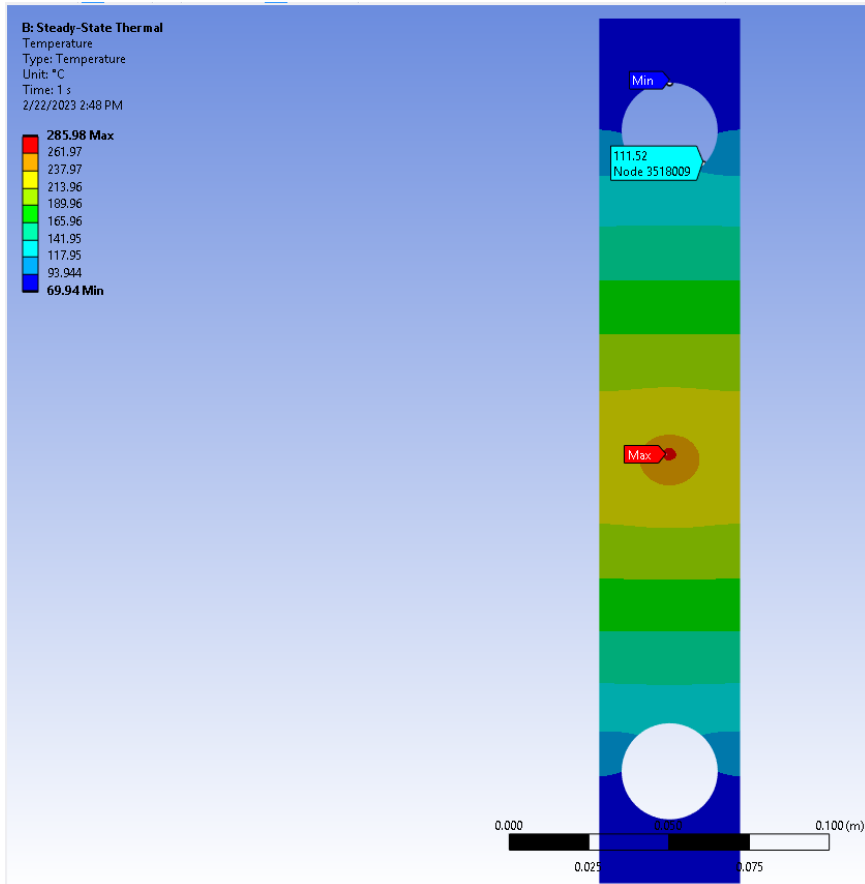


Fine Granularity Data, Center Cu Absorber only 53cm long, 2mm Mesh Size, 6.35mm Hole filled with Air, 30mm Water Channels 5000 W/m²°C, 44°C ave H2O, 29KW Power absorbed in sample



Using multiple cores: [Yes]
Number of cores requested: 24

Maximum source mesh bounding box length: 0.528 (m)
Maximum range used in sorting closest nodes: 0.16896 (m)

Number of source nodes: 12592800
Number of target nodes: 839886

Number of nodes mapped : 839886
Number of nodes not mapped : 0
Number of nodes outside : 503755

Percent nodes mapped: 100%
Weight calculation time: 526.203 (s)
Number of variables to interpolate: 1.
Interpolation time: 7.6e-002 (s)

Row	Target
1	Total Heat Rate (W) 29035

Results:

Fine Granularity Data, Center Cu Absorber only 53cm long, 2mm Mesh Size, 6.35mm Hole filled with Air, 30mm Water Channels 9000 W/m²°C, 40°C ave H2O, 29KW Power absorbed in sample

