

THE FOLLOWING **PREVIEW** HAS BEEN APPROVED FOR  
**ALL CRYO AUDIENCES**

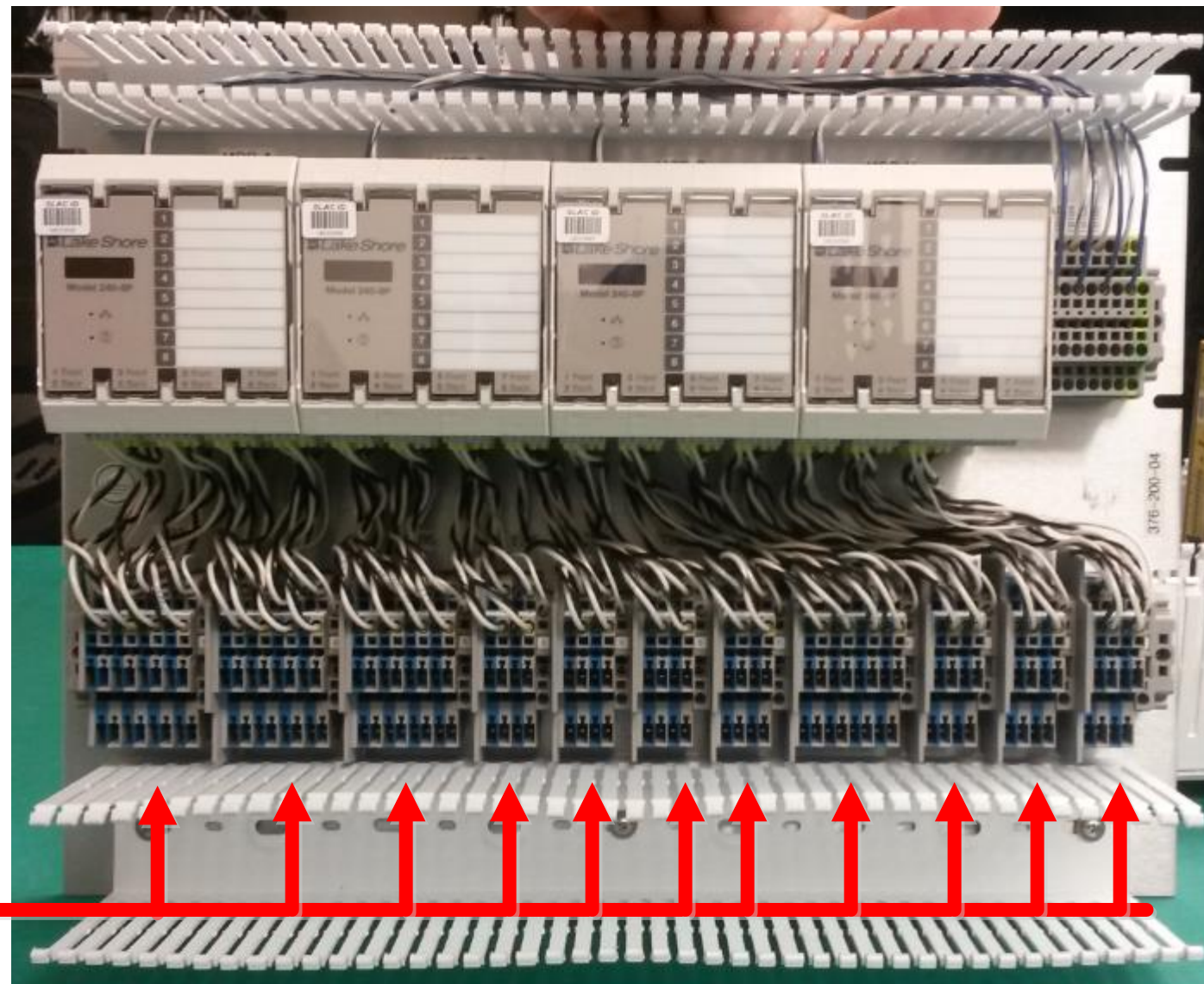
THIS PREVIEW HAS BEEN RATED

<b>2K</b>	<b>NOT RESTRICTED</b>
	Material Suitable for All Engineers of Any Age
<b>CONTAINS USEFUL INFORMATION AND CRYOCONTROL CONTENT</b>	



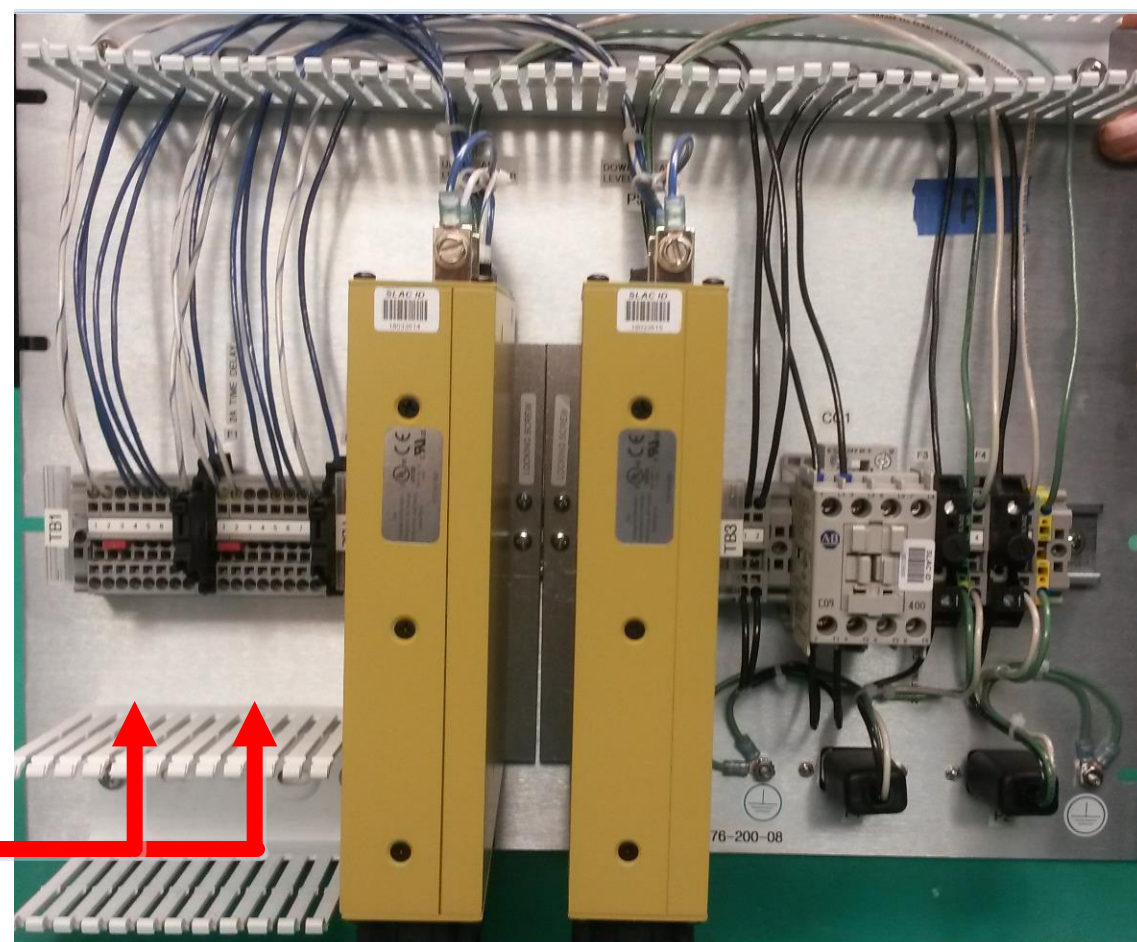
LERF CryoControl Rack  
 Front of rack shown. Rear of rack will show after I receive a picture.  
 Cavity heater, valves, etc long haul terminations on panels in back.

Some PLC I/O long haul. I.e. pressure transducers.

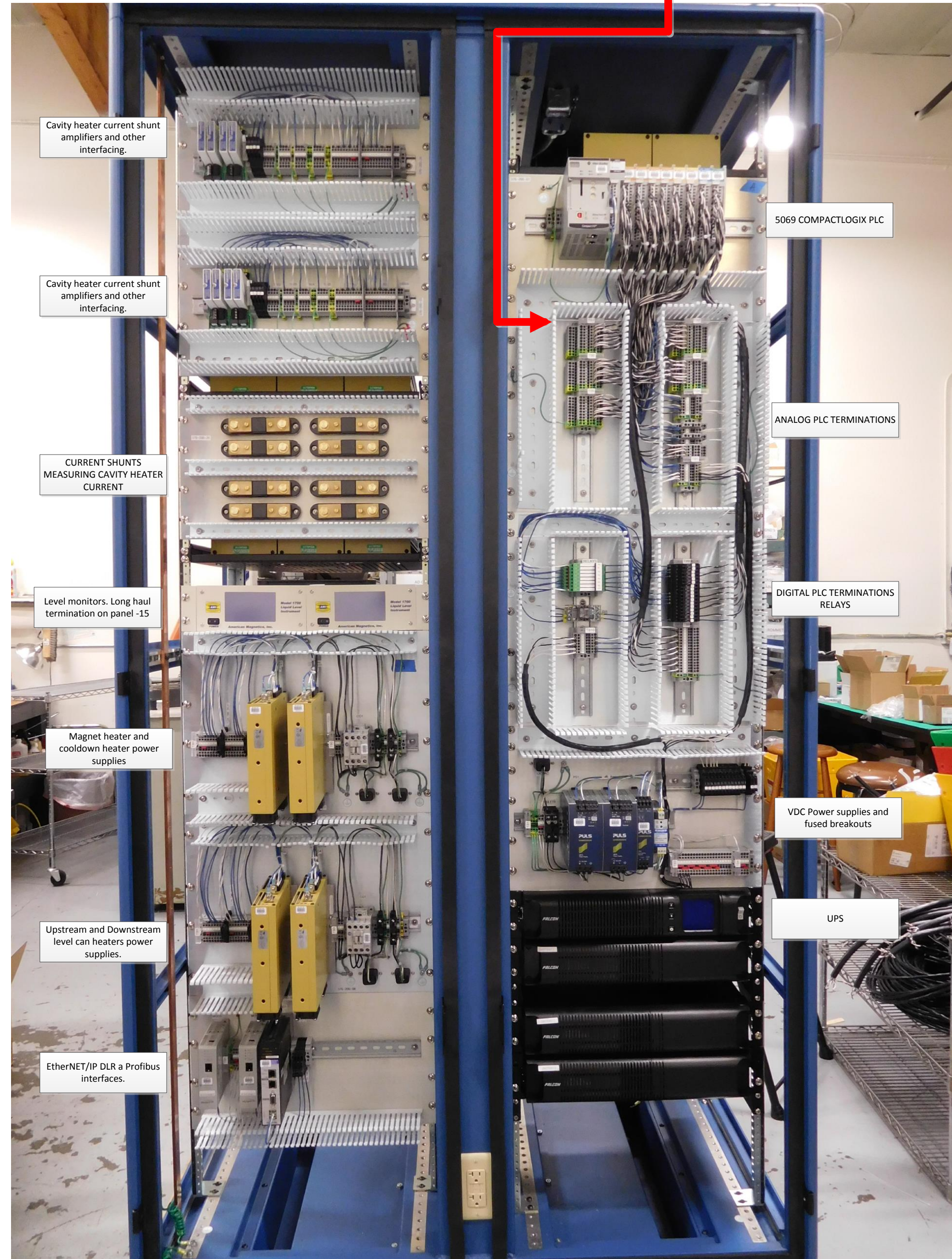


This panel located on the back (not shown in rack picture)

Long Haul RTD Landings. Plug-in terminal block connectors will be provided with shipment. Plug-in style only on RTD terminal blocks. All other terminal block landings on other panels are cage-clamp except fused terminal blocks are screw terminals. Nearly all long haul terminations are from the bottom of terminal blocks.



Magnet heater, cooldown line heater, upstream end can heater, downstream end can heater all this style. Some of the heater long hauls land on panel -15 to be broken out when flange connector is shared.



Cavity heater current shunt amplifiers and other interfacing.

Cavity heater current shunt amplifiers and other interfacing.

CURRENT SHUNTS MEASURING CAVITY HEATER CURRENT

Level monitors. Long haul termination on panel -15

Magnet heater and cooldown heater power supplies

Upstream and Downstream level can heaters power supplies.

EtherNET/IP DLR a Profibus interfaces.

5069 COMPACTLOGIX PLC

ANALOG PLC TERMINATIONS

DIGITAL PLC TERMINATIONS RELAYS

VDC Power supplies and fused breakouts

UPS