

INSTALLATION OF PRAD AND COEXISTENCE WITH CLAS12

PRad Experiment Readiness Review

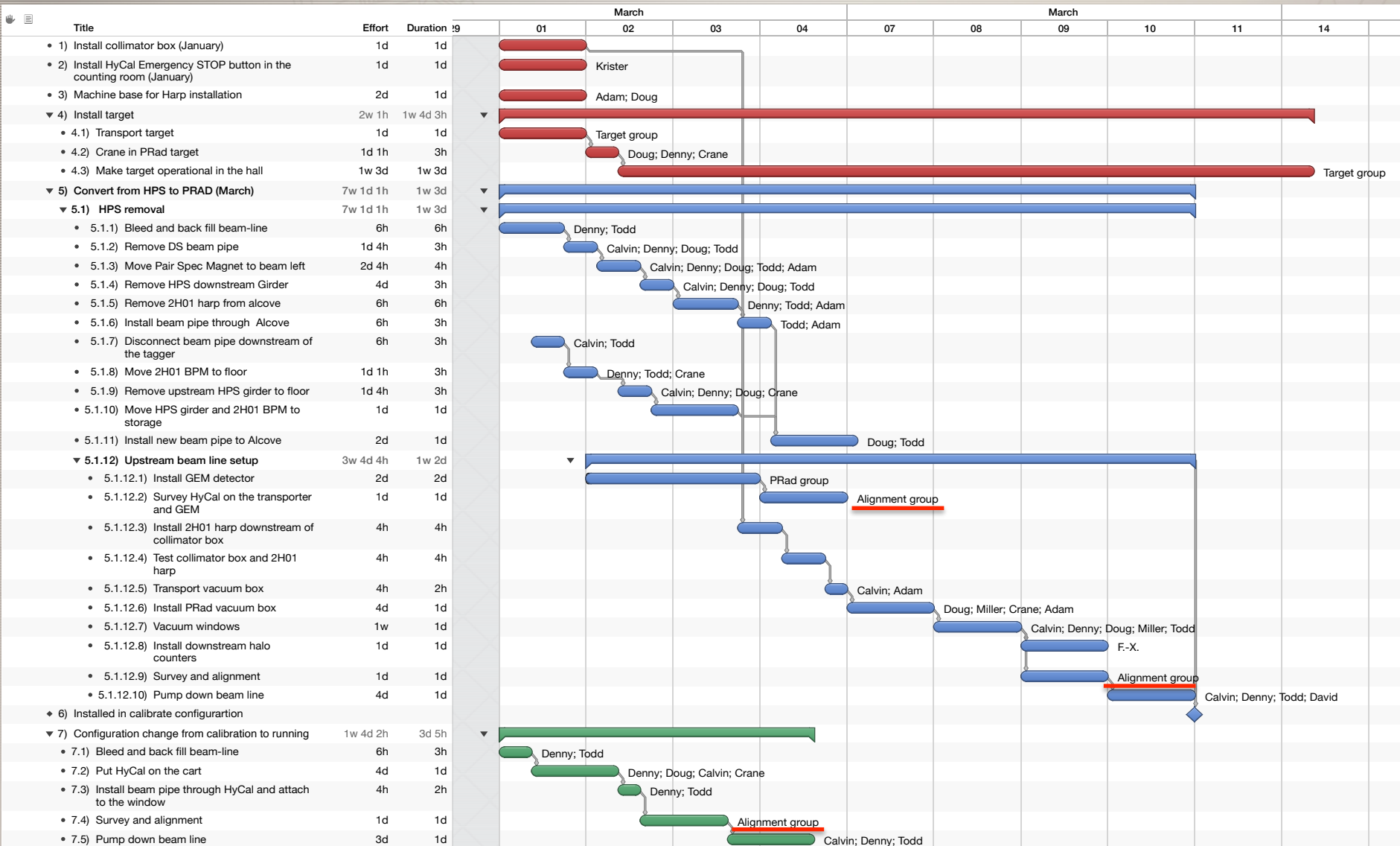
Eugene Pasyuk



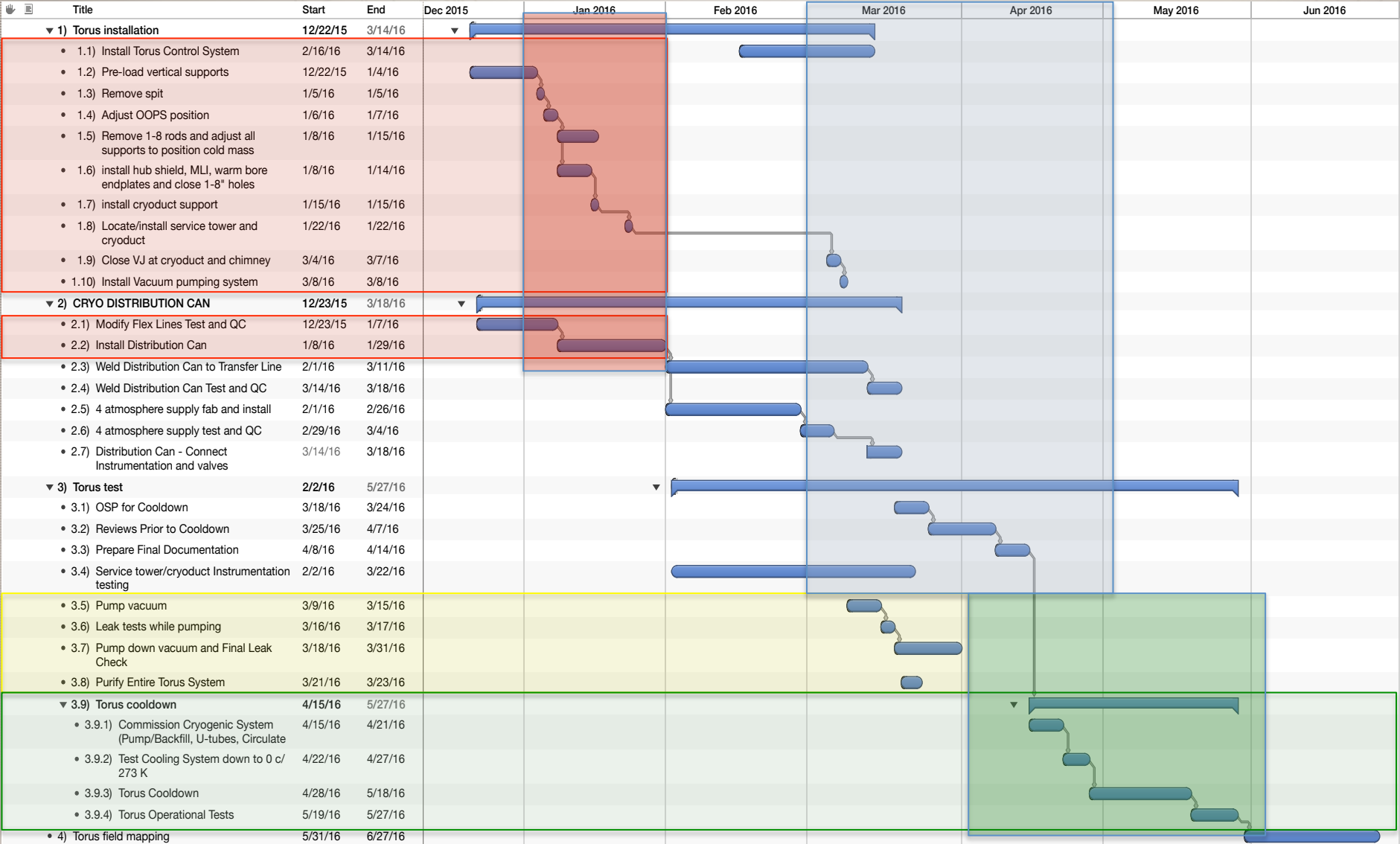
Outline

- PRad installation schedule
- CALS12 activities schedule
- Spatial requirements
- Service providers

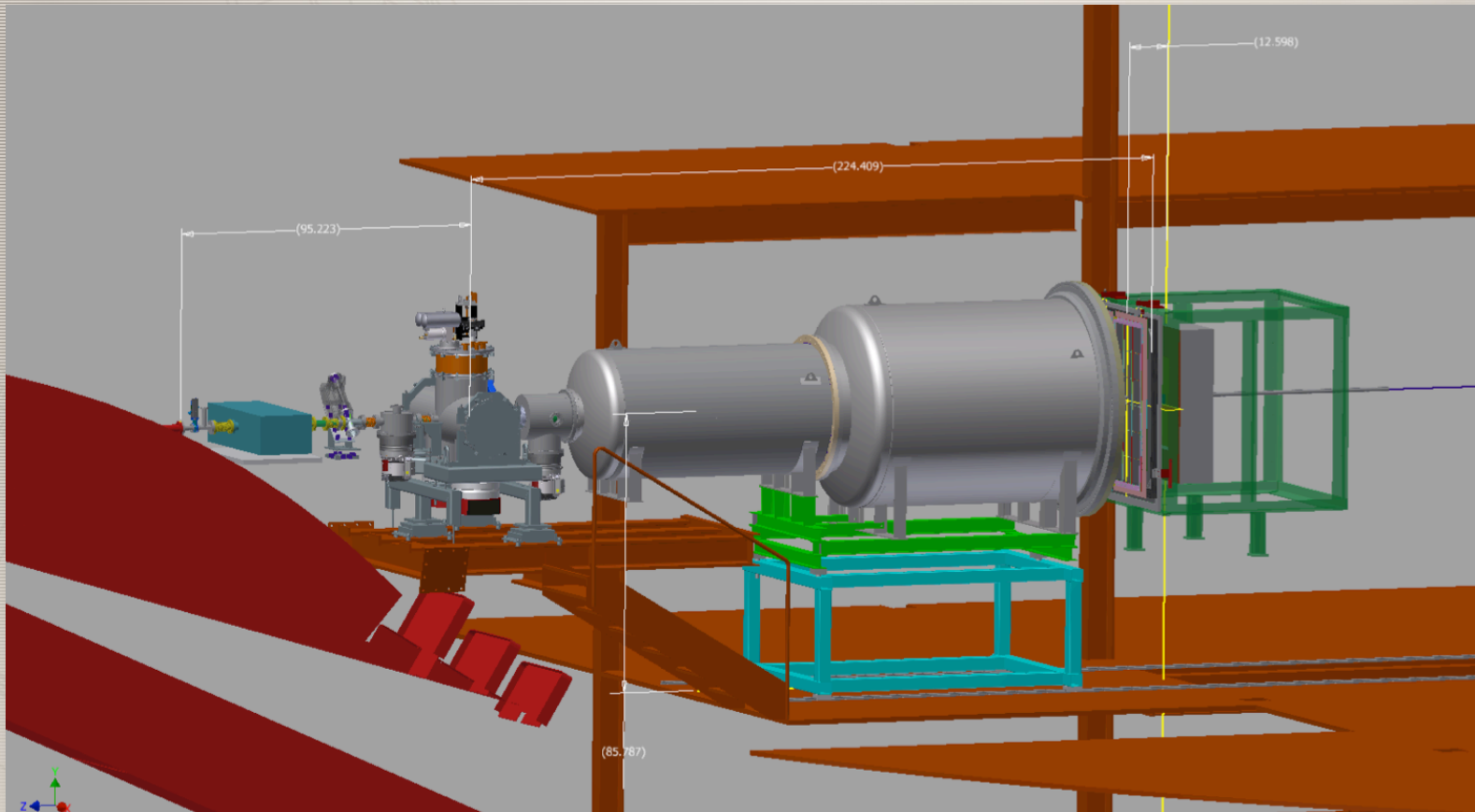
PRad Installation



CLAS12 activities in the Hall B



Spatial requirements



The experimental setup is located on the Level 1 of space frame.
The downstream beam pipe goes through the torus hub.
Spacewise this does not interfere with CLAS12 activities.

Service providers

Jlab alignment Group		
Fiducialize target	December 2015	1 day
Fiducialize GEM	January 2016	1 day
Survey and align GEM on HyCal	March 2016 ?	1 day
Survey and align beam line in calibration configuration	March 2016 ?	1 day
Survey and align beam line in calibration configuration	March 2016?	1 day

Conclusion

- A manpower for installation is identified and will be available.
- The estimate for conversion from HPS to PRad is 8 days.
- PRad shall peacefully coexist with CLAS12 construction.