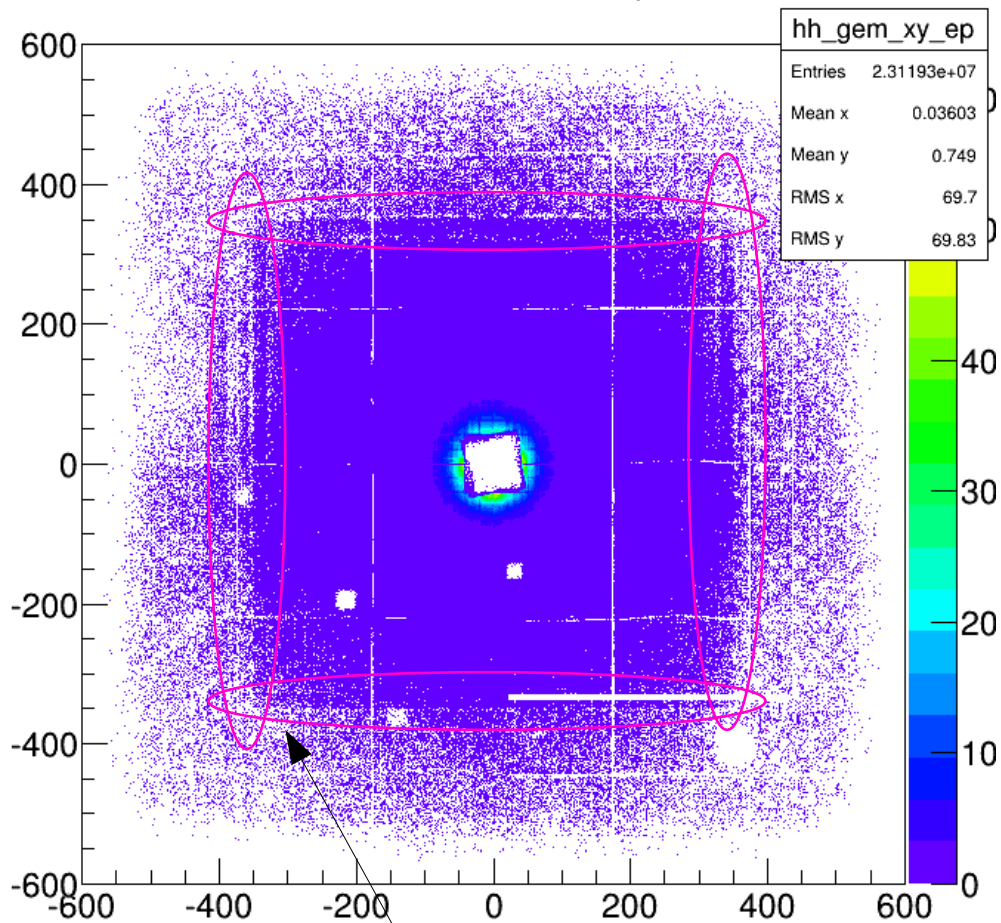


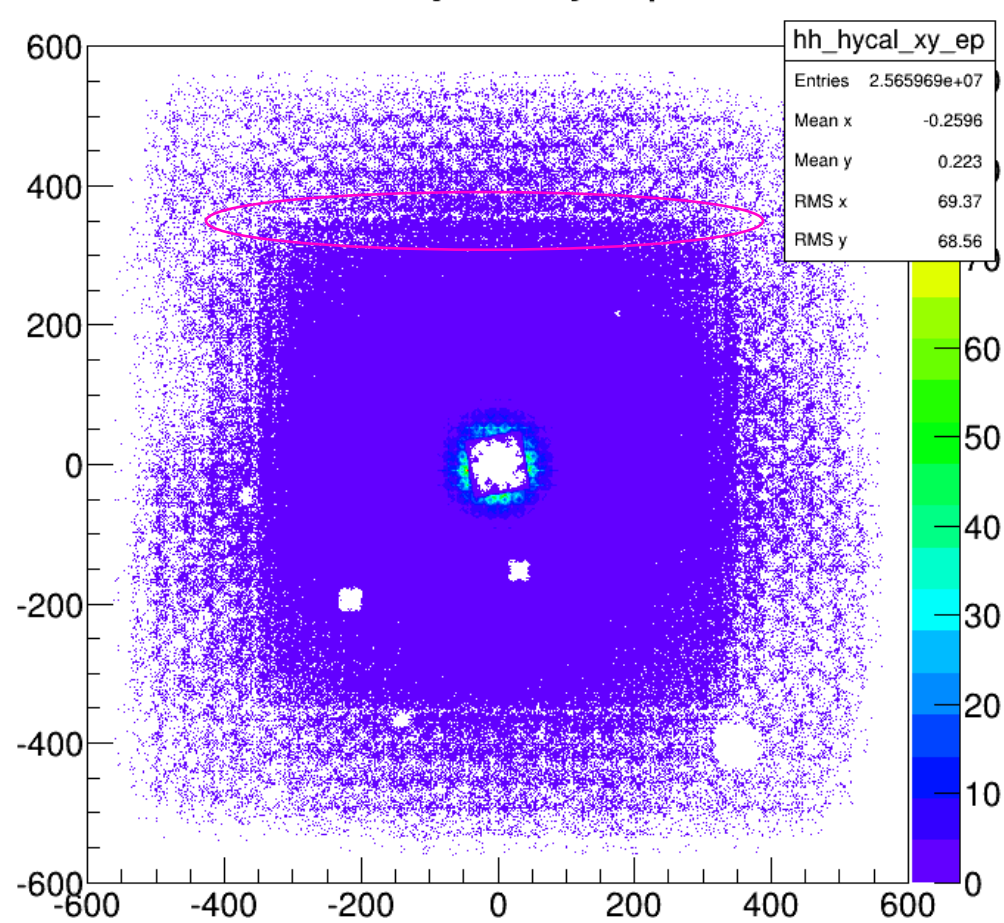
HyCal ep 2d cluster distribution

hh_gem_xy_ep



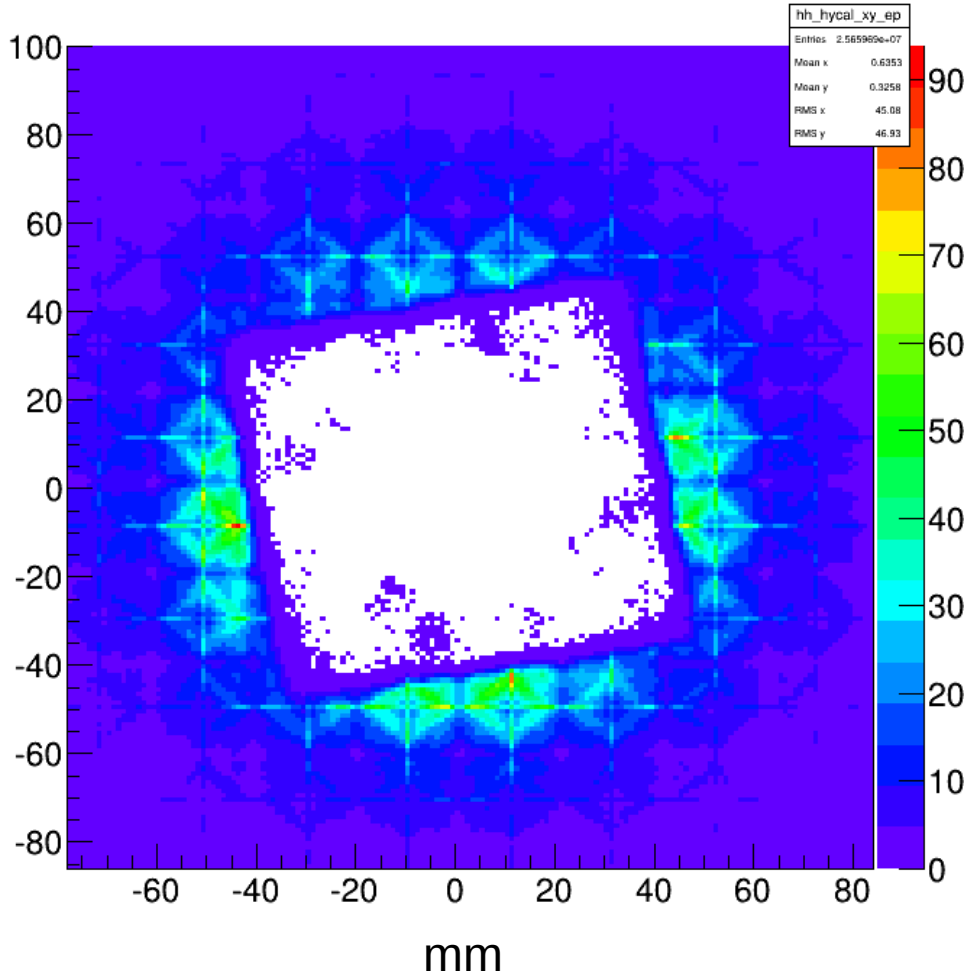
Straight line pattern

hh_hycal_xy_ep

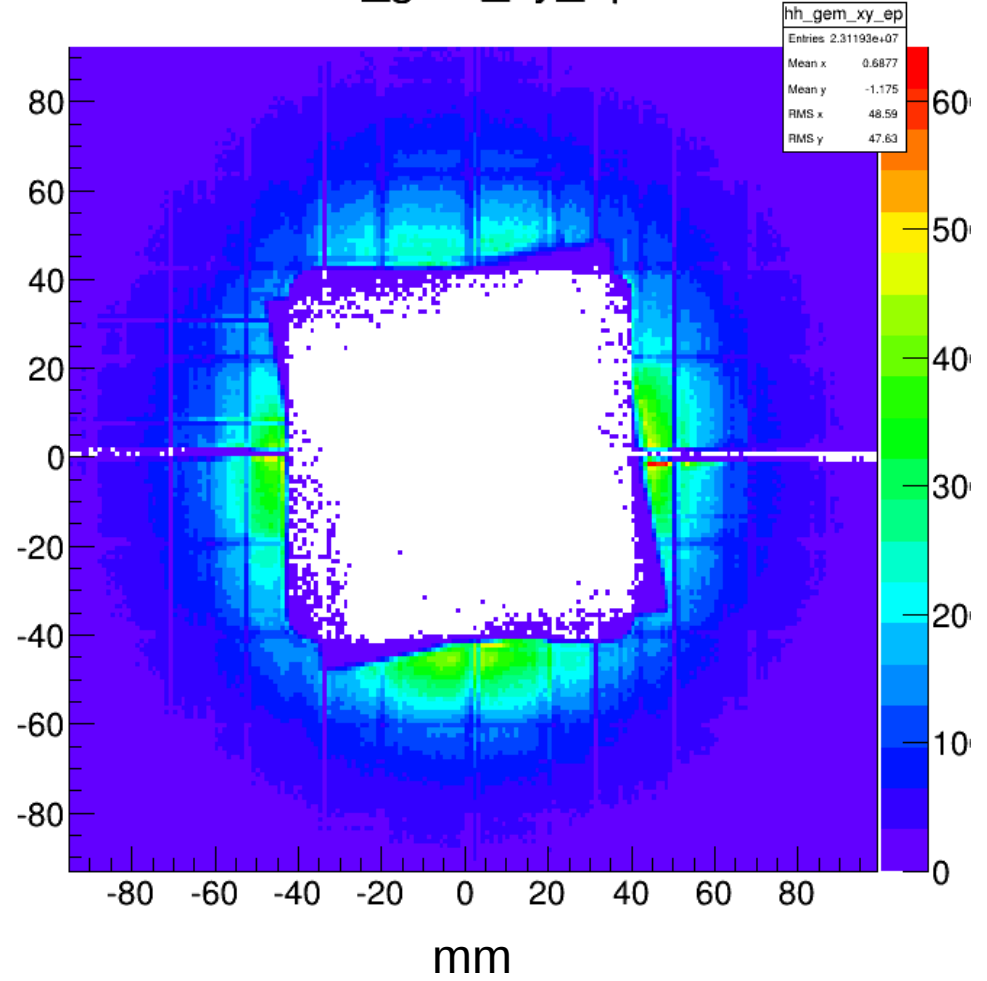


e-p cluster 2d distribution around central hole

hh_hycal_xy_ep



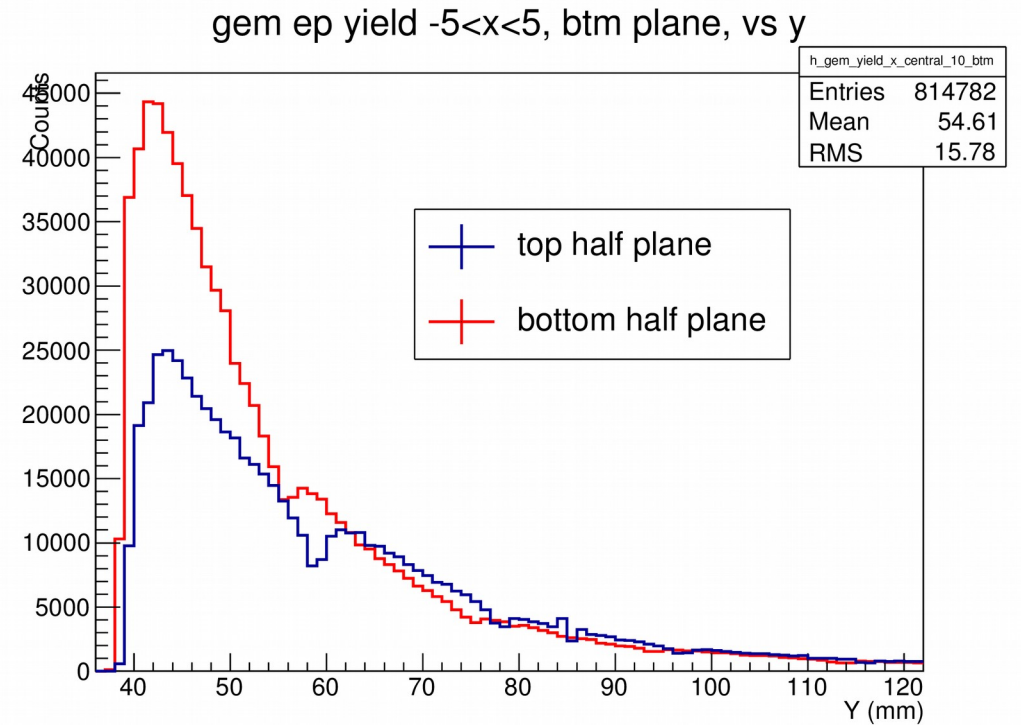
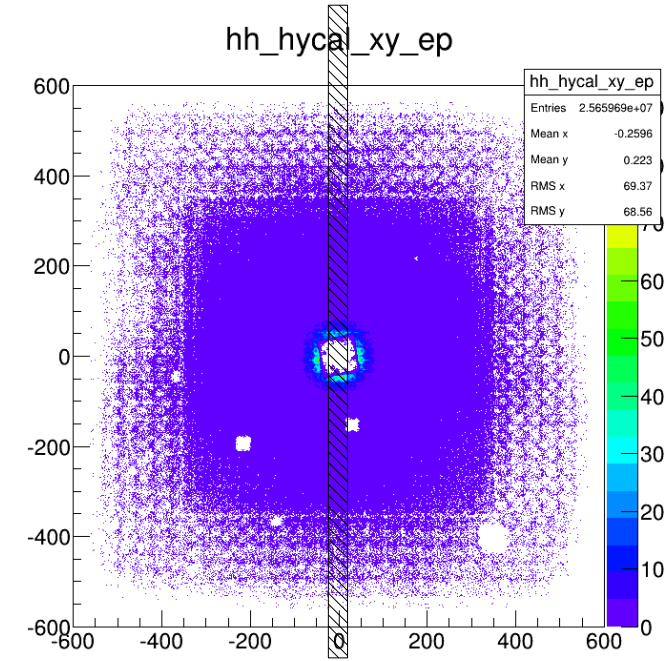
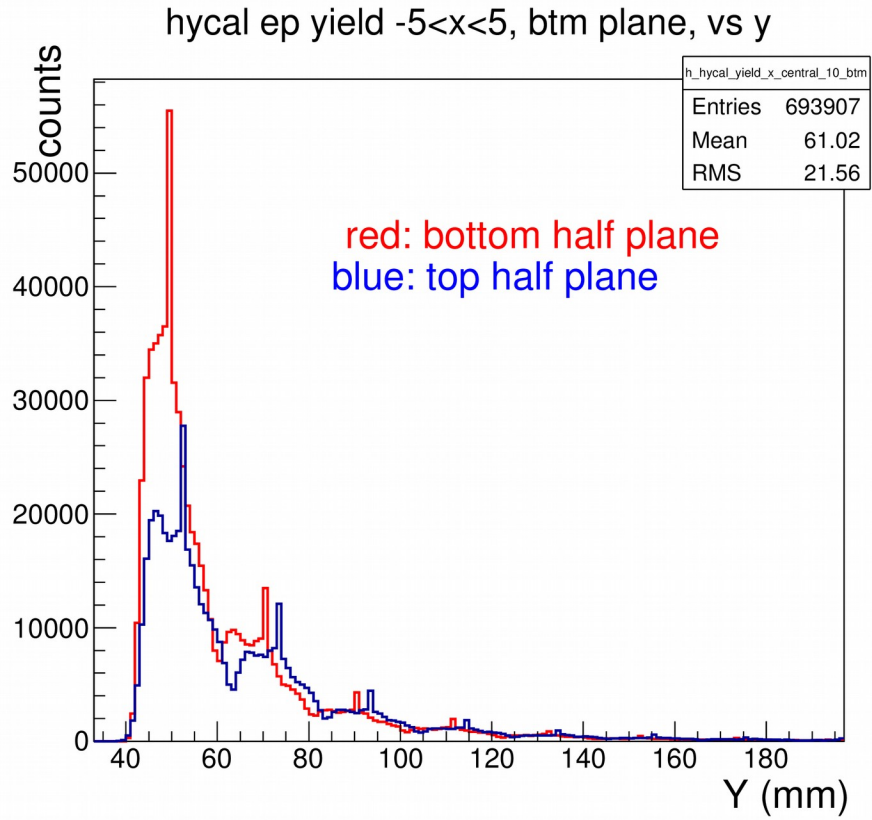
hh_gem_xy_ep



2GeV beam 40 runs

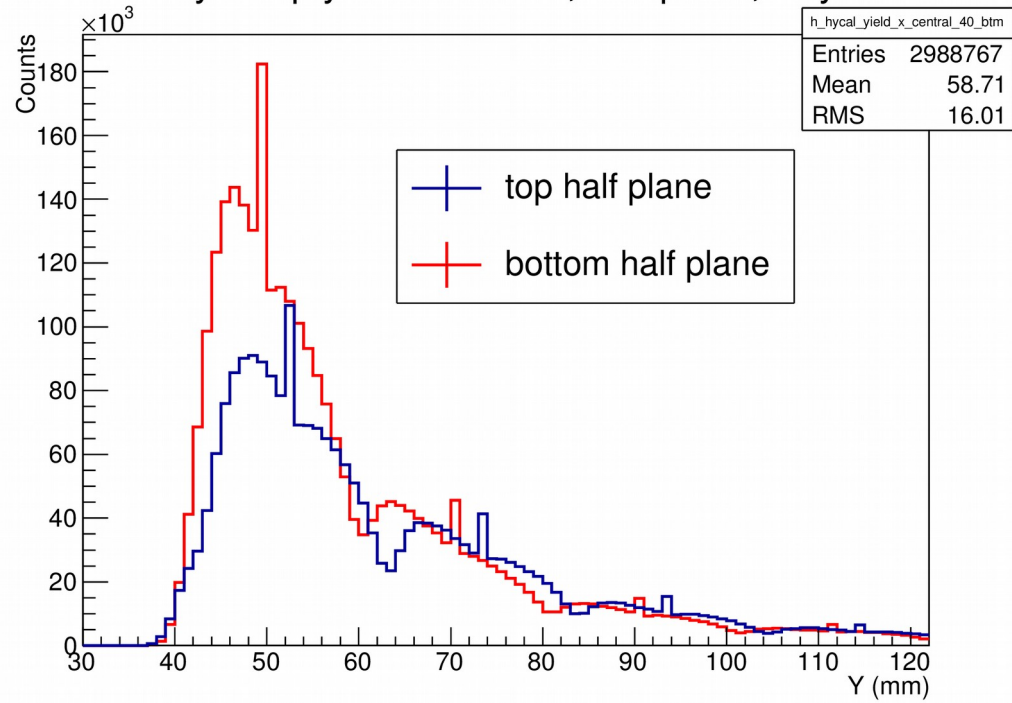
Possibly due to beam offset

Yield asymmetry

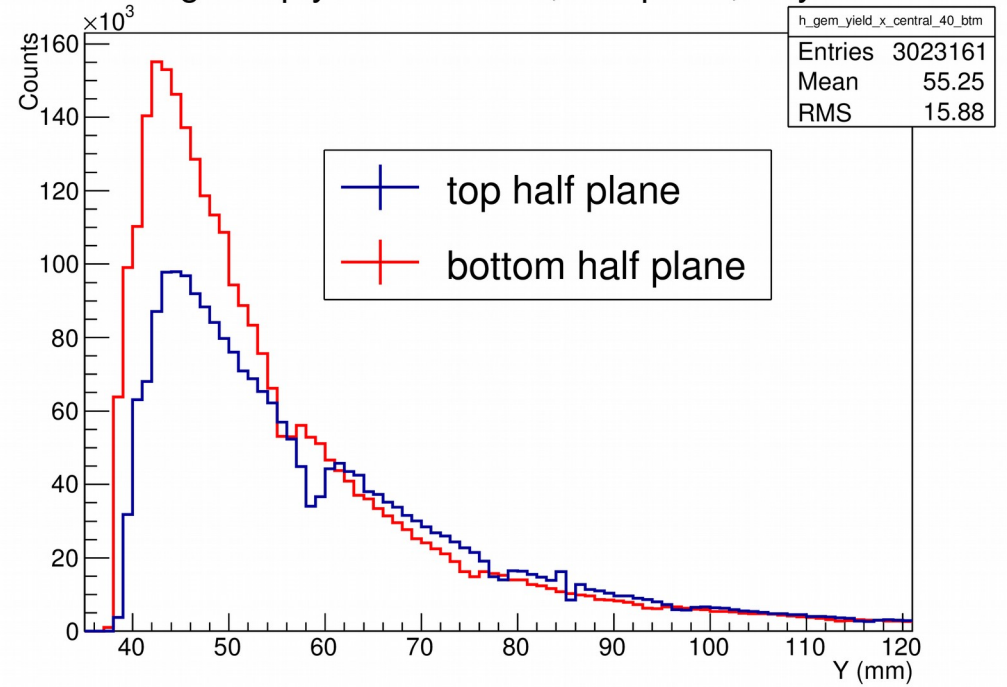


Yield asymmetry

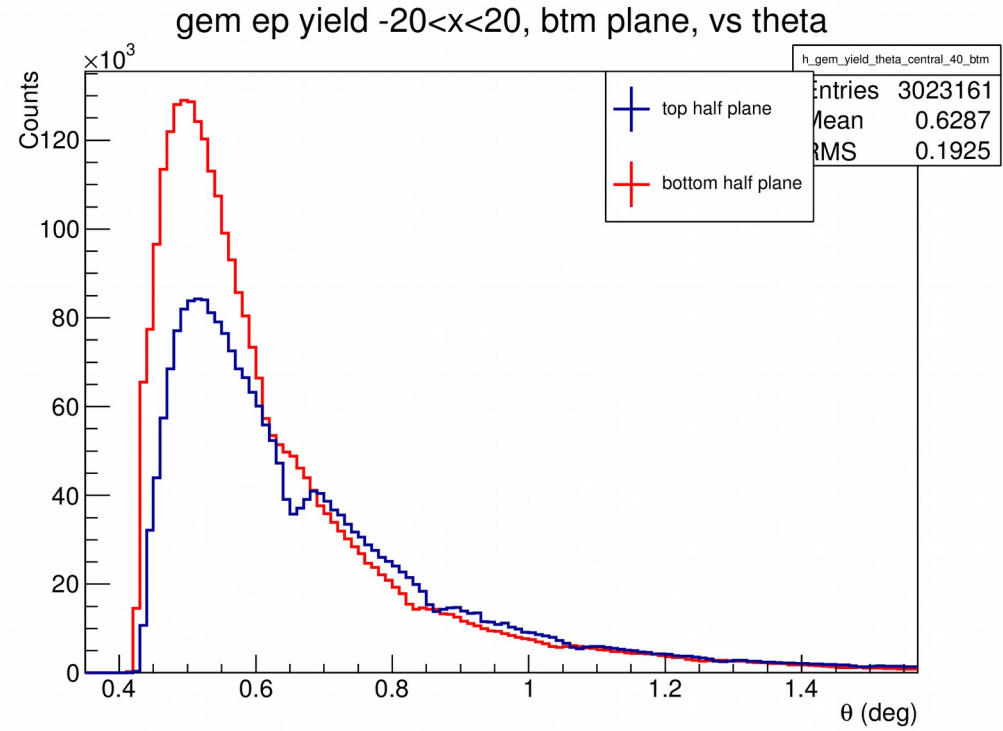
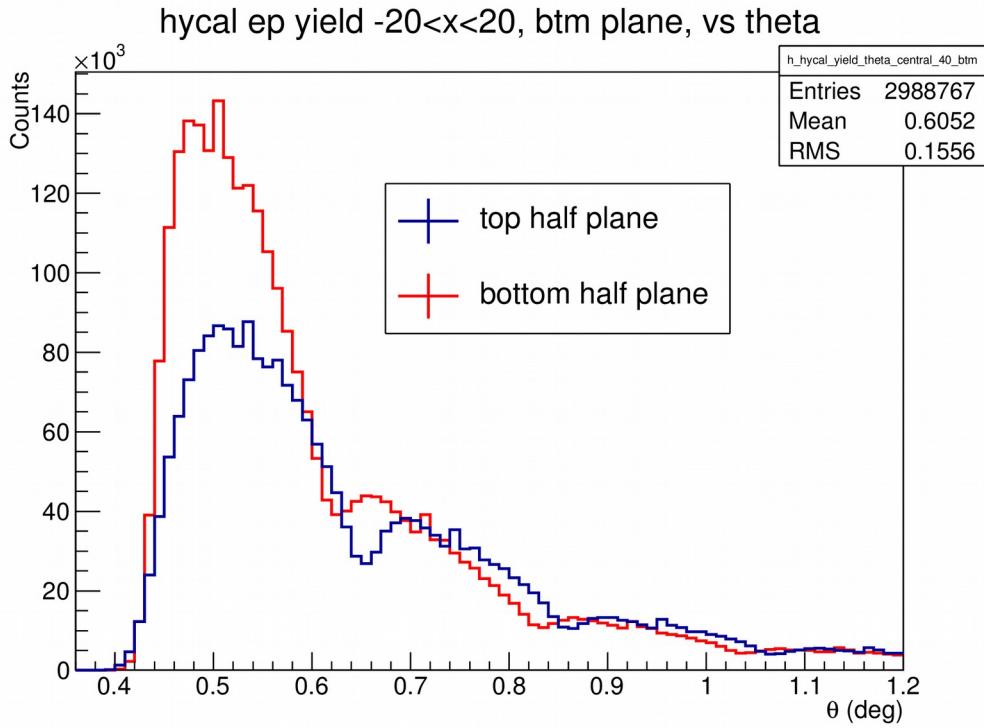
hycal ep yield $-20 < x < 20$, btm plane, vs y



gem ep yield $-20 < x < 20$, btm plane, vs y



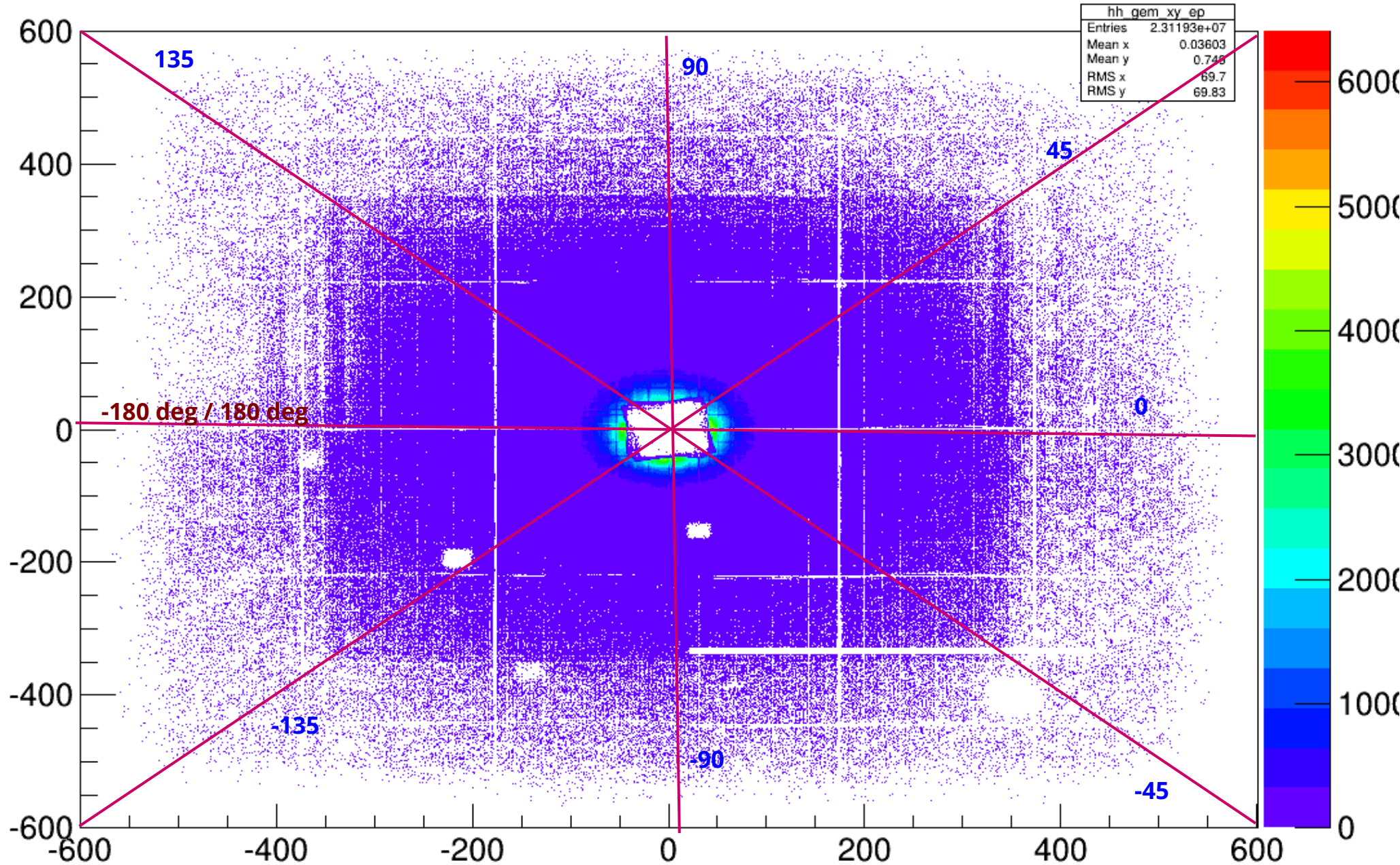
Yield asymmetry



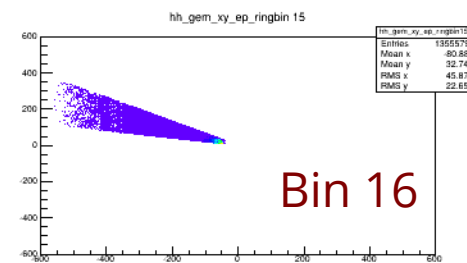
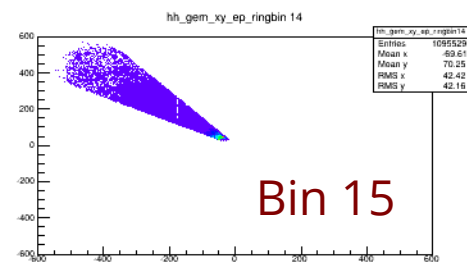
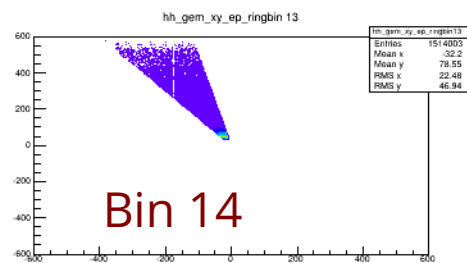
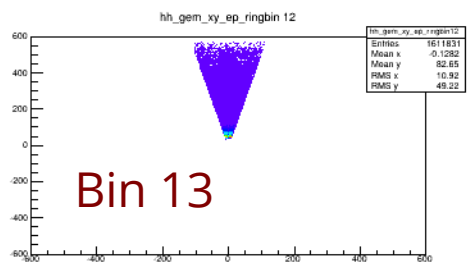
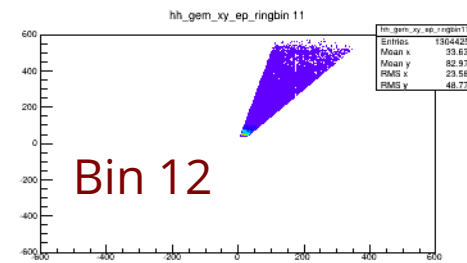
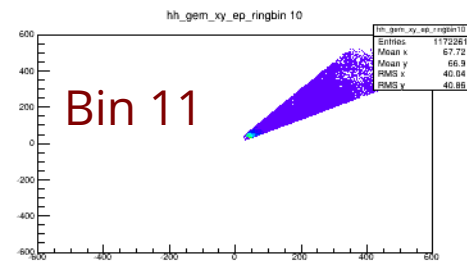
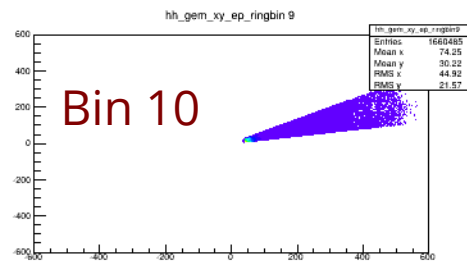
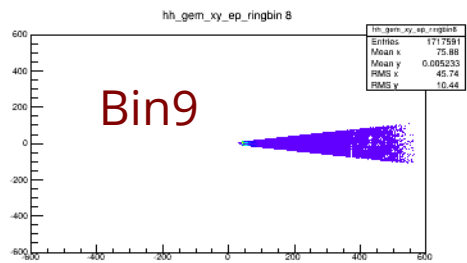
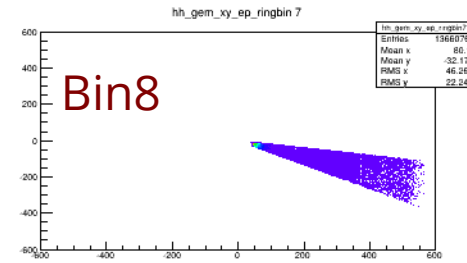
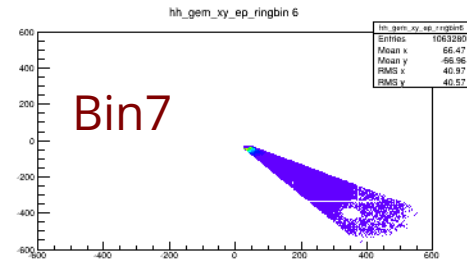
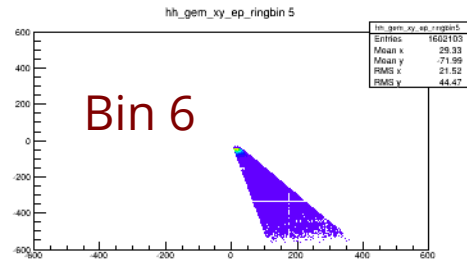
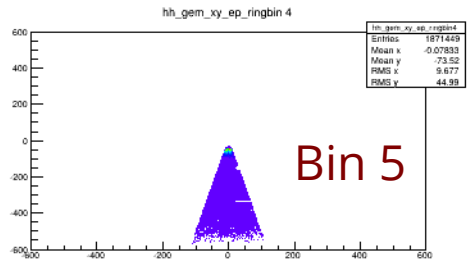
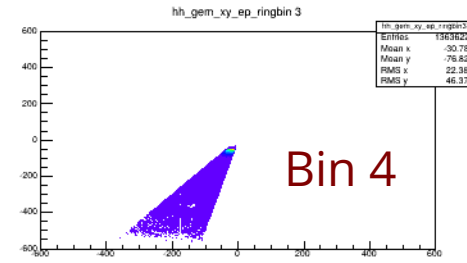
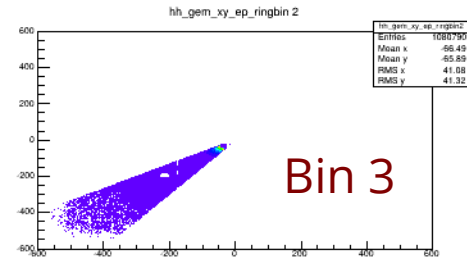
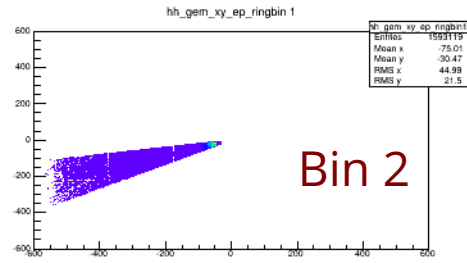
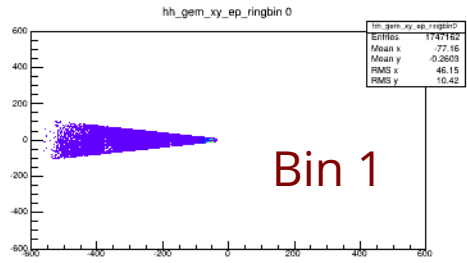
Ep yield symmetry against azimuth angle

hh_gem_xy_ep

2GeV ep data

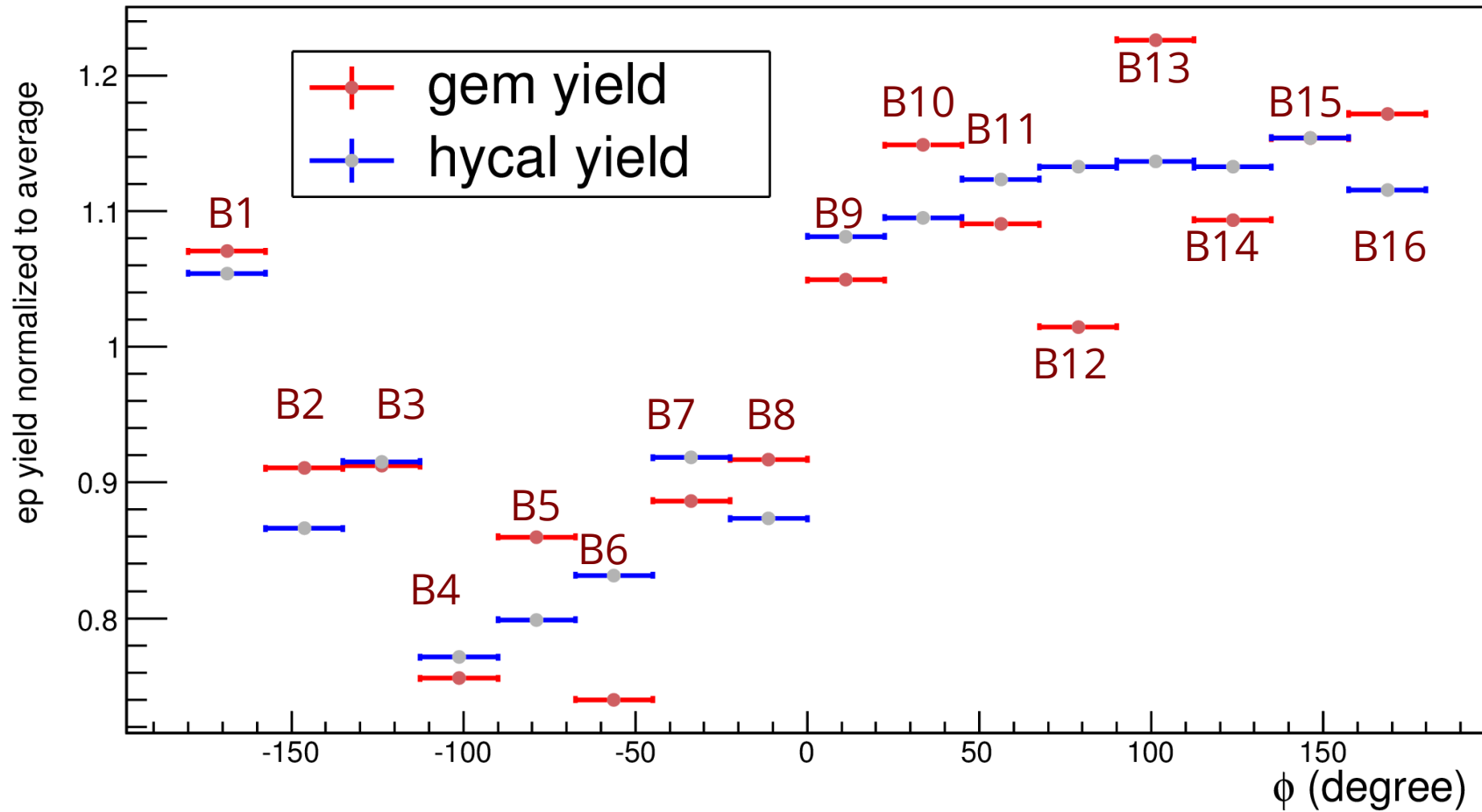


2GeV ep data



0.8 - 0.9 degree

2GeV ep data

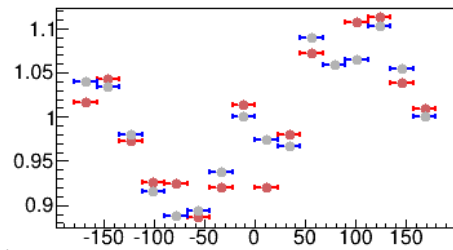


Blue: HyCal

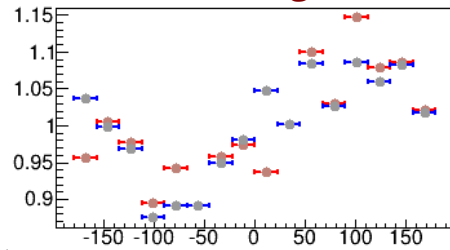
Red: GEM

2GeV ep data

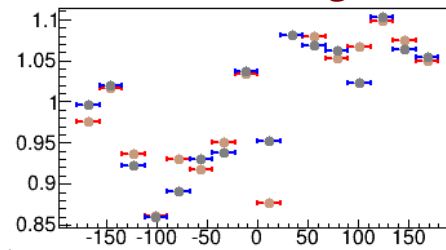
0.8 – 0.9 degree



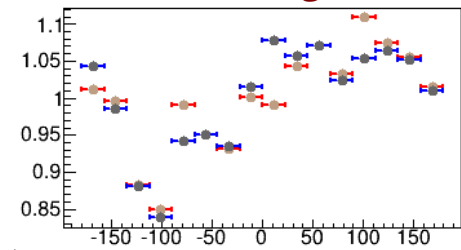
0.9 – 1.0 degree



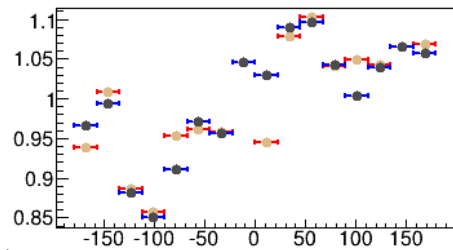
1.0 – 1.1 degree



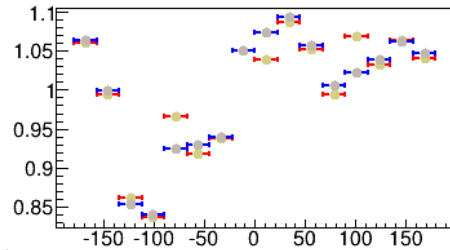
1.1 – 1.2 degree



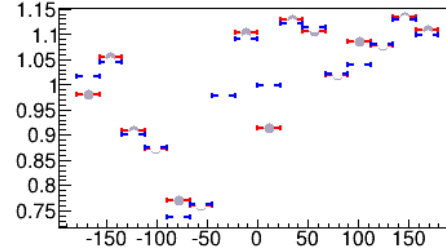
1.2 – 1.3 degree



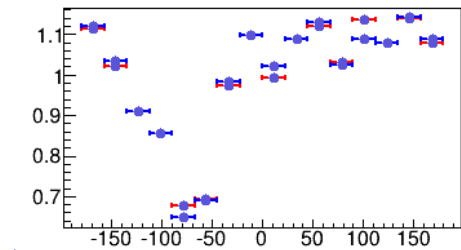
1.3 – 1.4 degree



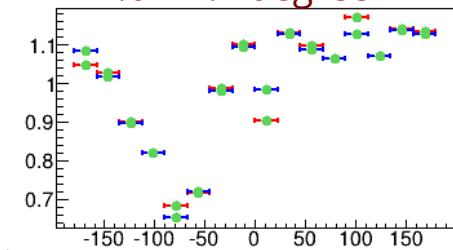
1.4 – 1.5 degree



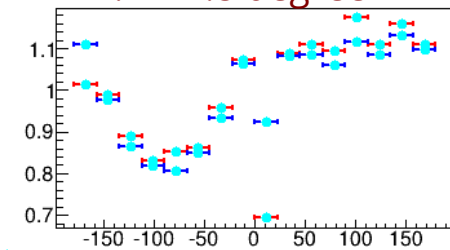
1.5 – 1.6 degree



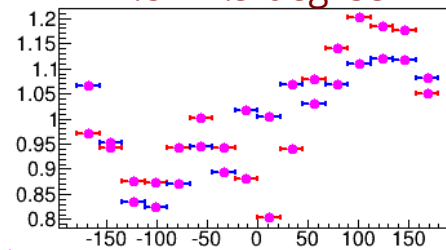
1.6 – 1.7 degree



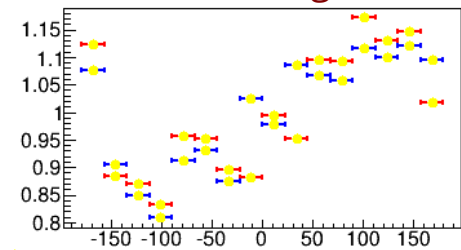
1.7 – 1.8 degree



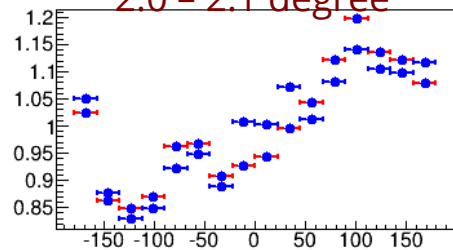
1.8 – 1.9 degree



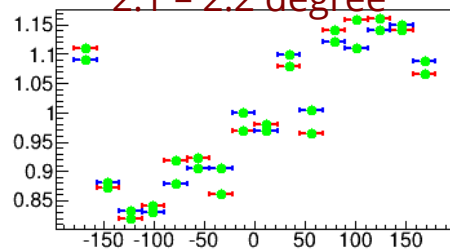
1.9 – 2.0 degree



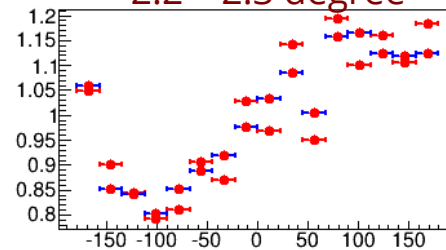
2.0 – 2.1 degree



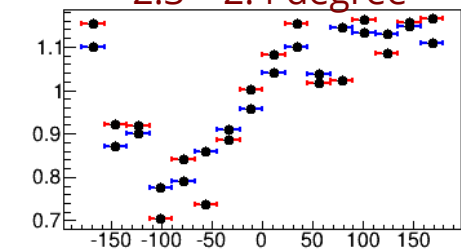
2.1 – 2.2 degree



2.2 – 2.3 degree



2.3 – 2.4 degree

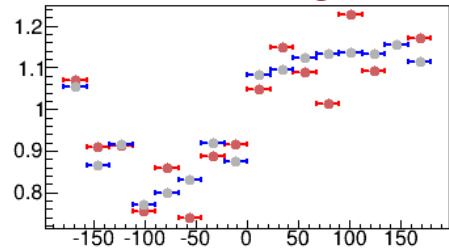


Blue: HyCal

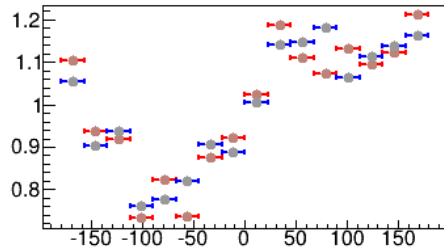
Red: GEM

2GeV ep data

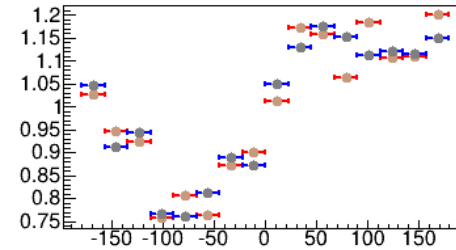
2.4 – 2.5 degree



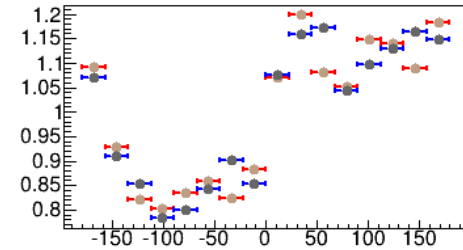
2.5 – 2.6 degree



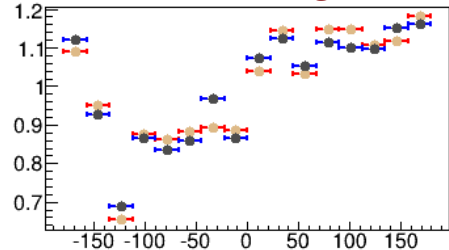
2.6 – 2.7 degree



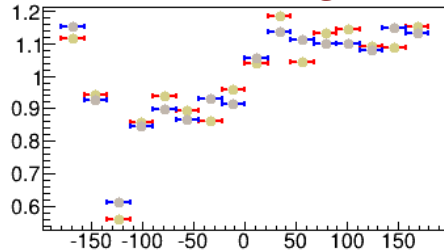
2.7 – 2.8 degree



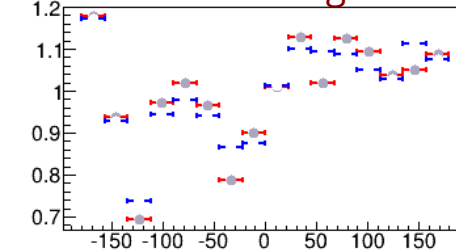
2.8 – 2.9 degree



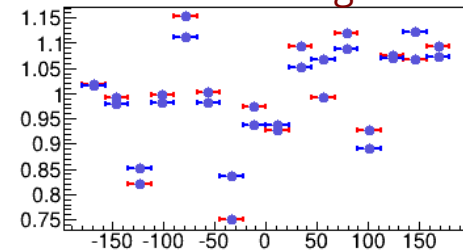
2.9 – 3.0 degree



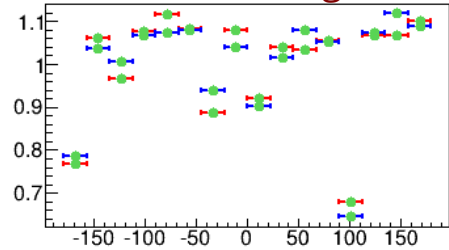
3.0 – 3.1 degree



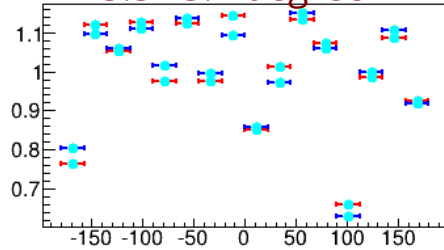
3.1 – 3.2 degree



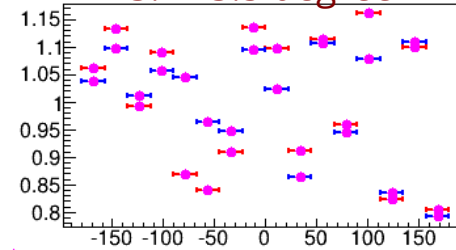
3.2 – 3.3 degree



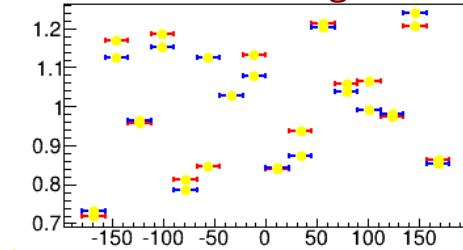
3.3 – 3.4 degree



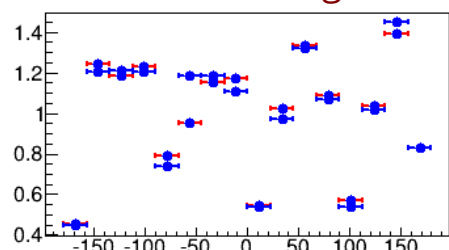
3.4 – 3.5 degree



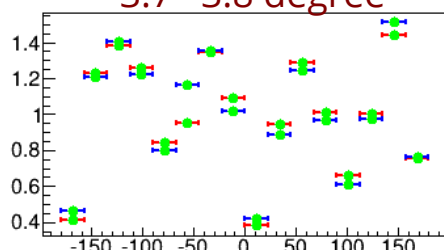
3.5 – 3.6 degree



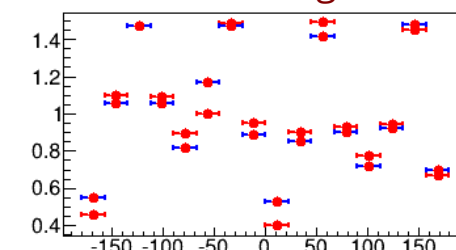
3.6 – 3.7 degree



3.7 – 3.8 degree



3.8 – 3.9 degree



3.9 – 4.0 degree

