

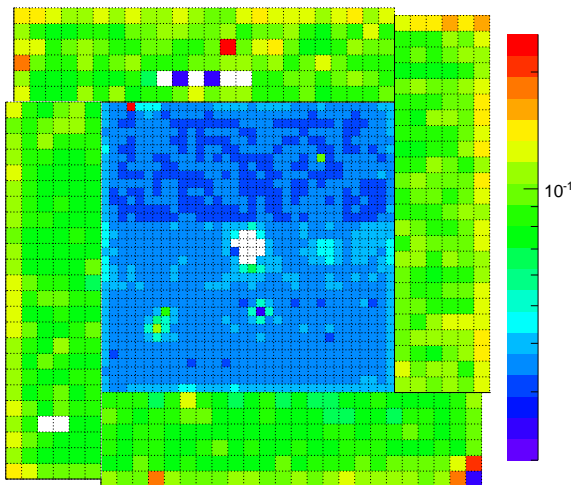
Calibration with C++ code

Maxime Levillain

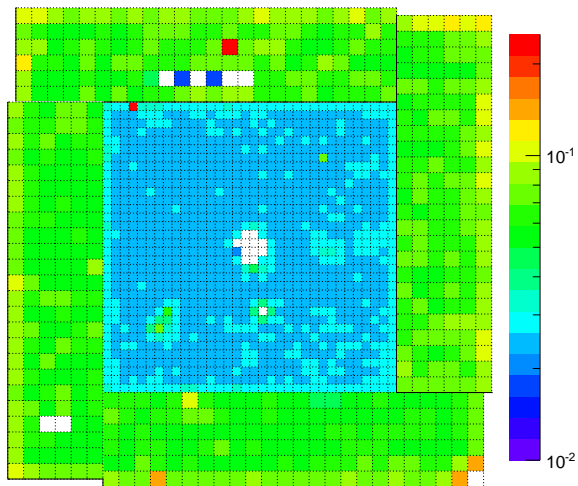
September 15, 2016



Uncertainty of gain parameter $\sim \sigma_E/E$



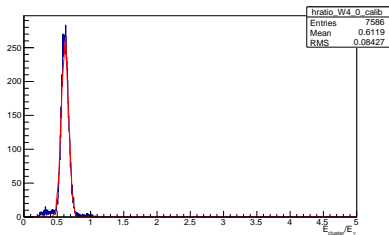
Resolution $\sim \sigma_E/E * \sqrt{E}$



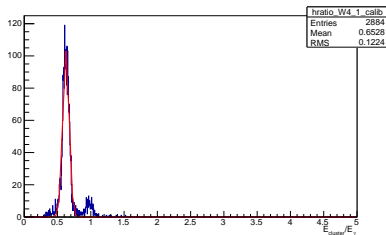
- ▶ W4, W230, G732: double peak (around 400 MeV (resp. 600 MeV, 400 MeV))
- ▶ W891, G880: noisy (other peak below 300 MeV)
- ▶ W824, G91, G74: tail
- ▶ G130-G135, G783, G784, G630: no (or not enough) statistics

Example of W4

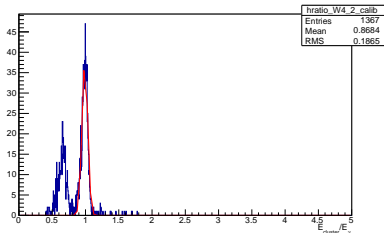
200-300 MeV



300-400 MeV



400-500 MeV



500-600 MeV

