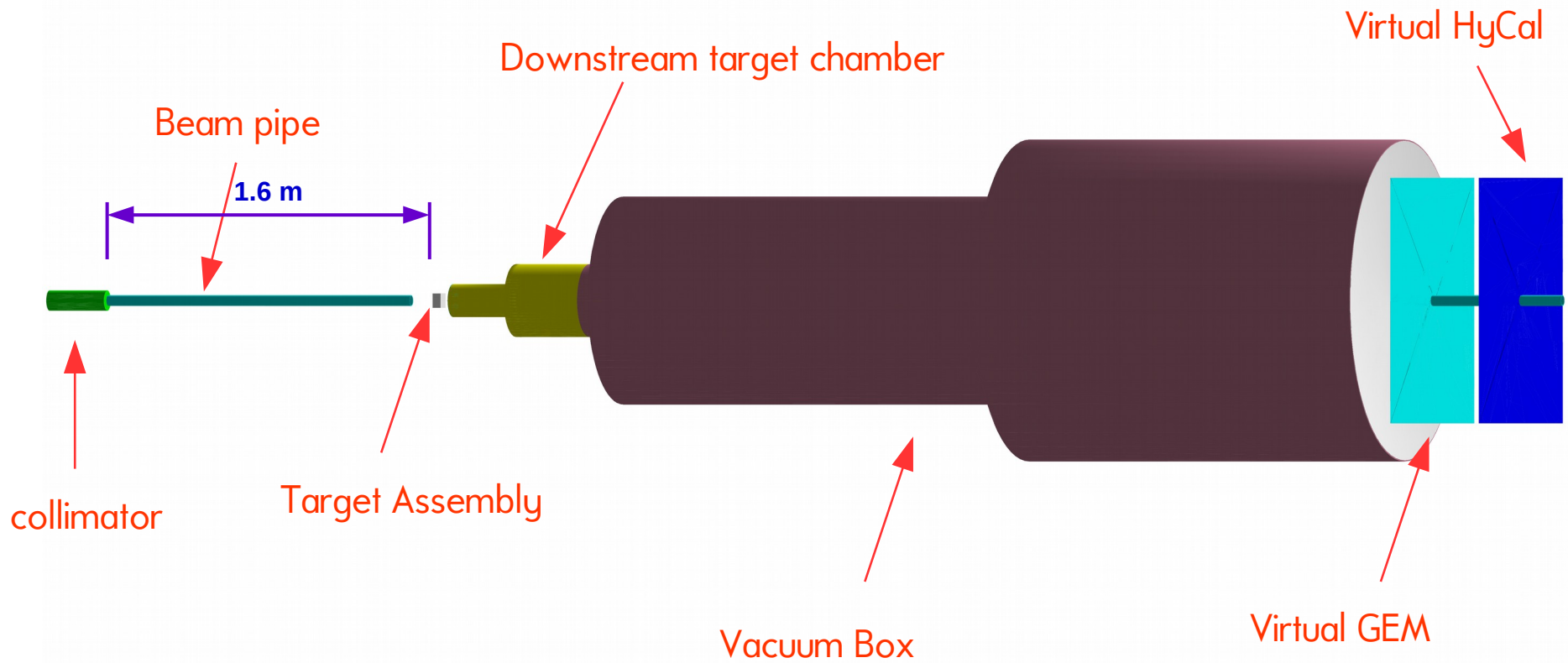


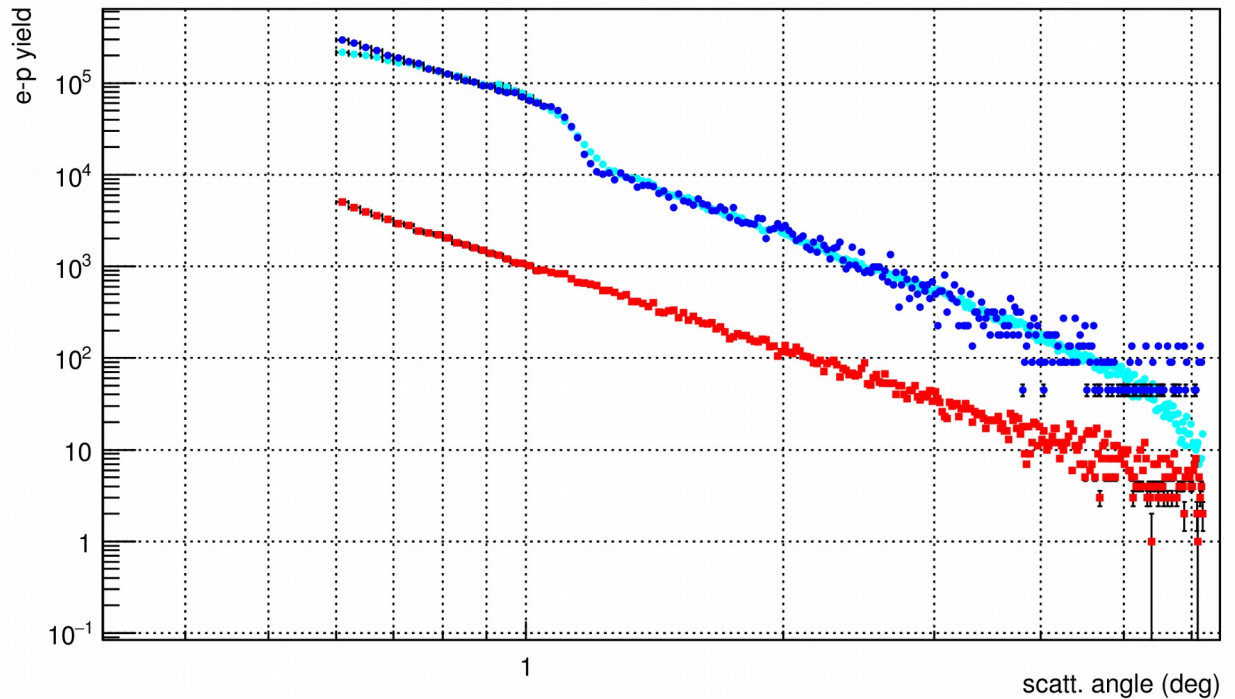
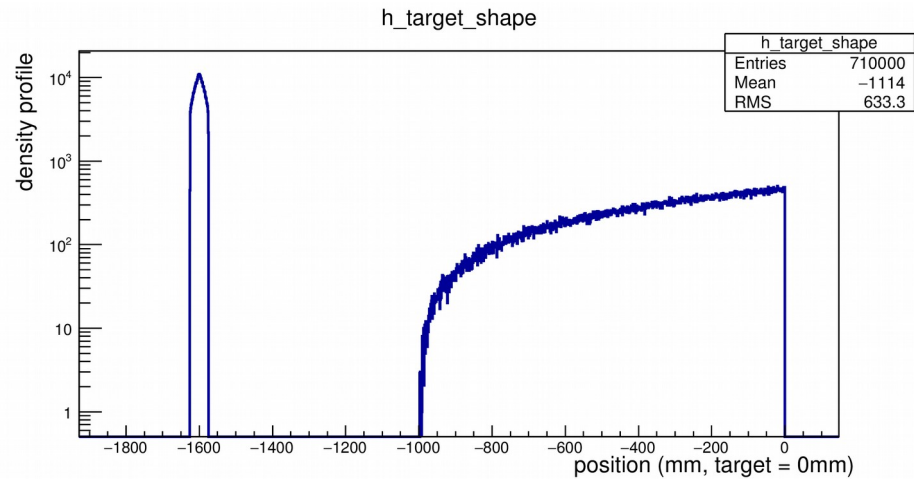
# setup

All dimension follow real setup

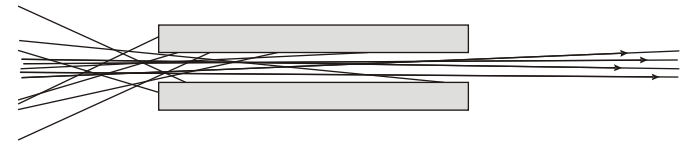


# Simulation results

- Residue gas in combination with beam pipe will only have effect on the slope of the background yield line, no bump
- Bump due to a sharp peak at around 1.6m upstream, which is the same location where collimator ends.



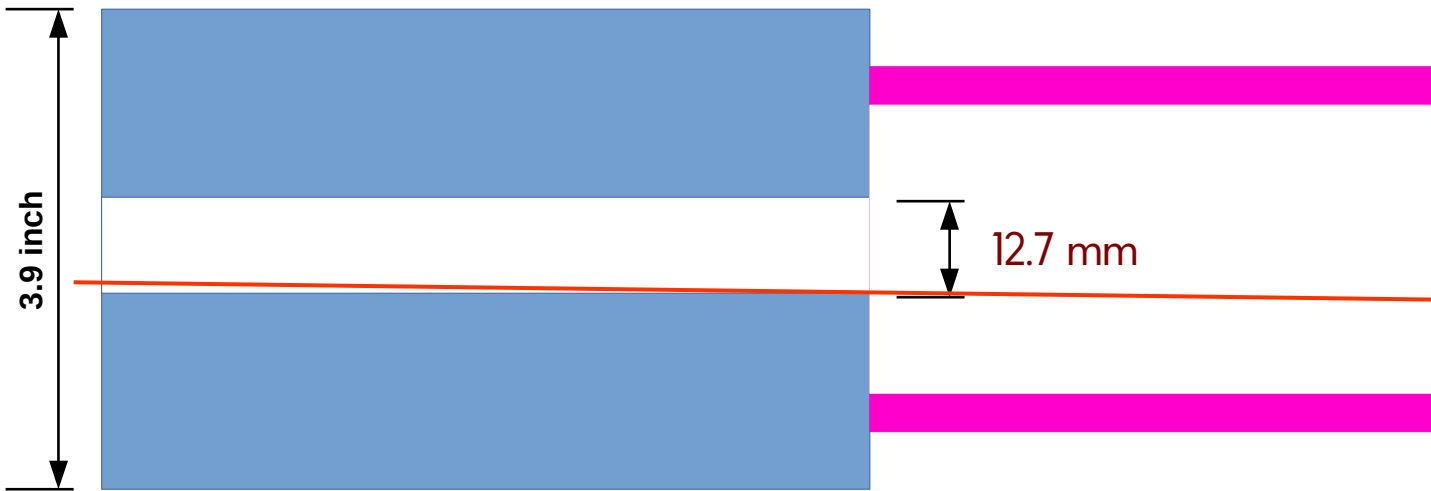
# Collimator in experiment



Collimator

11.8 inch

~1.6m to target



3.9 inch

12.7 mm

Beam halo hit the right edge of collimator

Collimator

Beam pipe

This will likely introduce bump to the e-p yield line

# Collimator in PRad