

# DAQ Update

Chao Peng

Duke University

08/28/2014

# Situation of DAQ

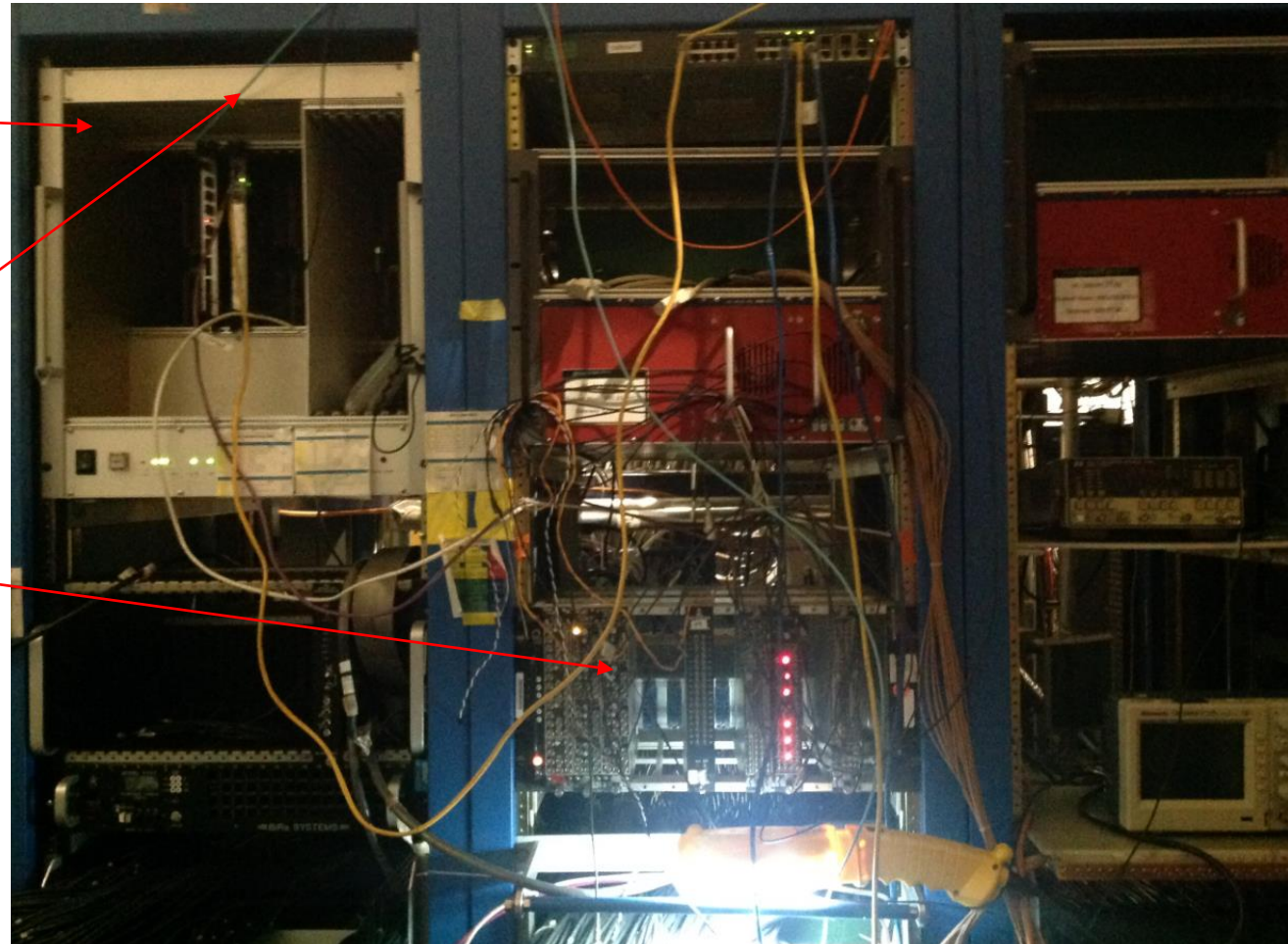
- Electronics we have
  - 4 Single board computer (2 MVME 5100 and 1 MVME 2431 from Hall C&D, 1 MVME 5500 from Dipangkar)
  - 31 1881M working boards, 3 1881M boards with bad channels (5 are from Hall A)
  - 1 Trigger Interface master (TIm) and 3 Trigger Interface slaves (TIs) from Sergey
  - 3 Struck 340 Fastbus Interface (SFI) from Sergey
- Electronics needed
  - VME TDC and VME scaler (will borrow them from Sergey)
- Achieved
  - 3 crates and all ADC boards working with SFI AUX card (old trigger system similar to PrimEx's)
  - Successfully used the TIm in one Fastbus crate
- Ongoing
  - Setting up the trigger crate (TIm in VME crate) to control TIs in Fastbus crates

# Situation of DAQ

VME crate (trigger crate)  
T1m, MVME 2431

Fiber for communications  
between T1m and T1s

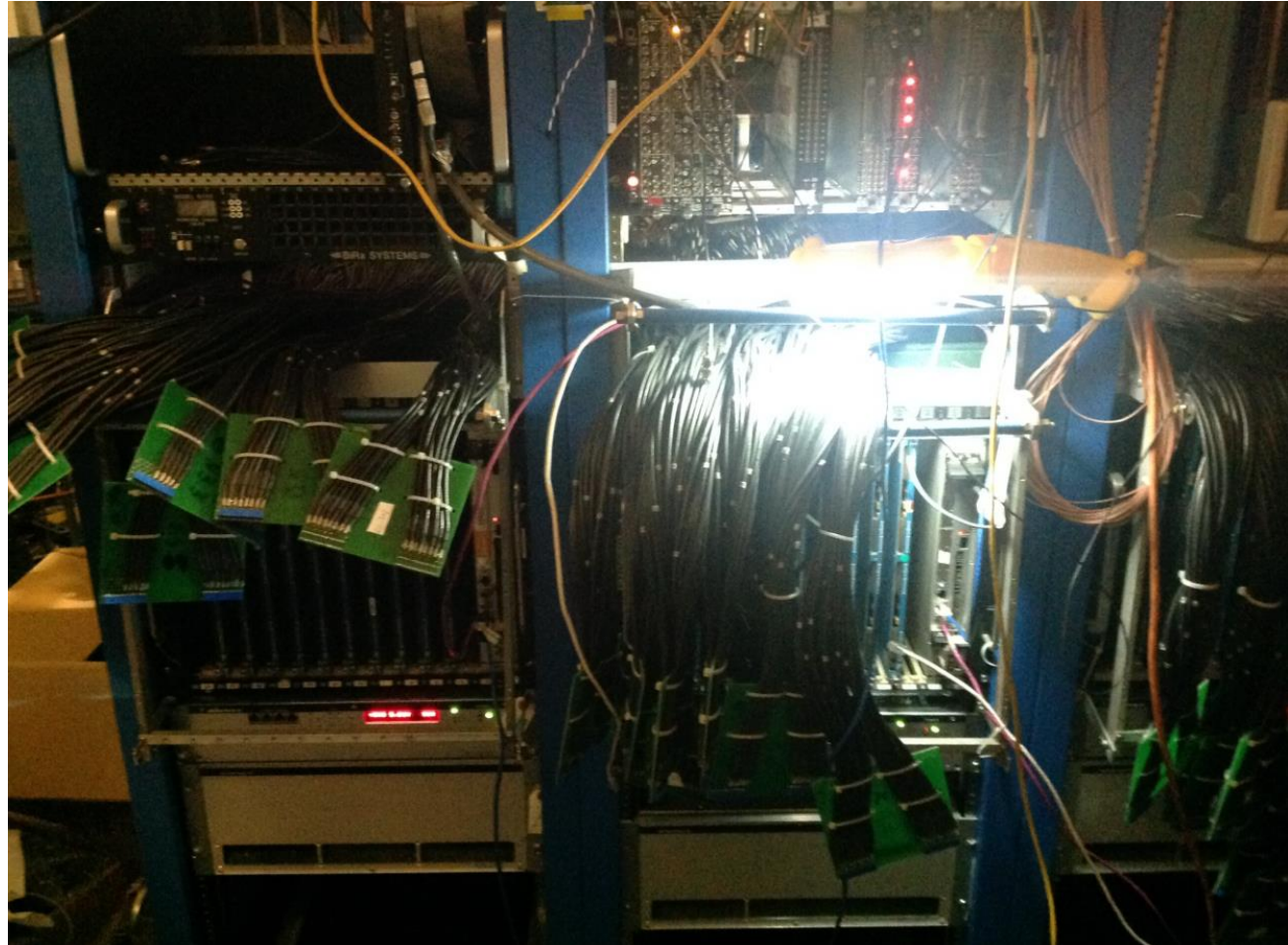
NIM crate and modules  
for adjustment of ADC  
gate



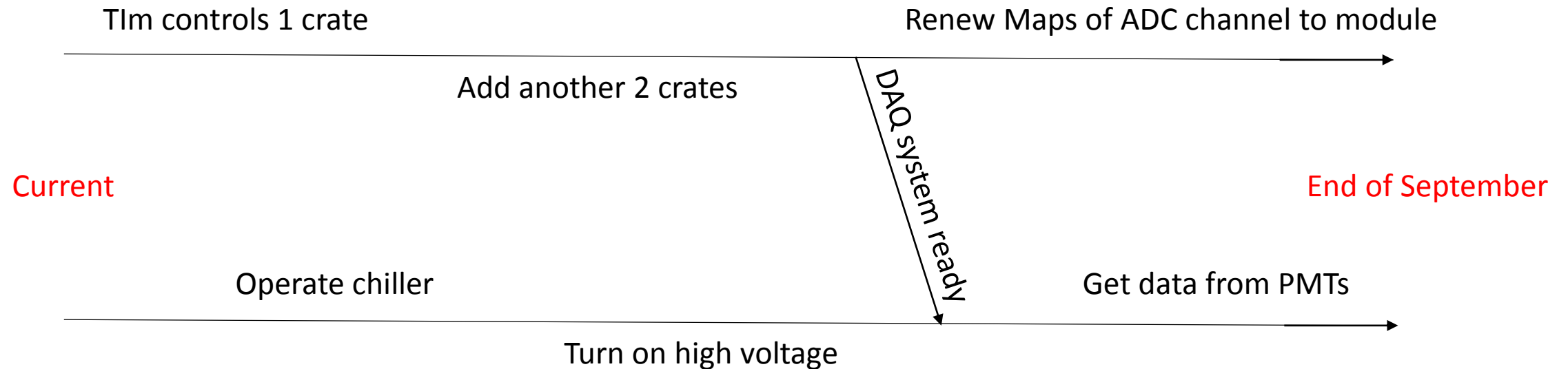
# Situation of DAQ

Three Fastbus crates with  
10 ADC boards in each

Center crate is connected  
to Tim for current test



# Plan on DAQ



I am currently trying to use the trigger crate (TIm) to control 1 Fastbus crate (with TIs), will add another two after it succeeds.

The high voltage test is expected to be done in September, but it depends on when we can get the utility power back