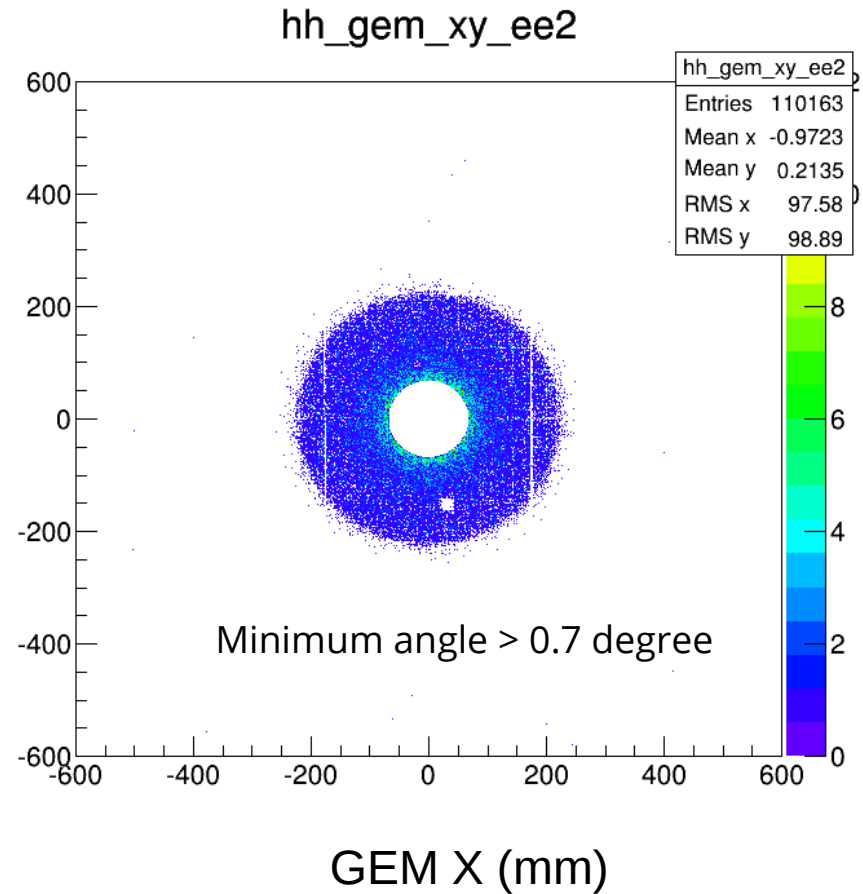
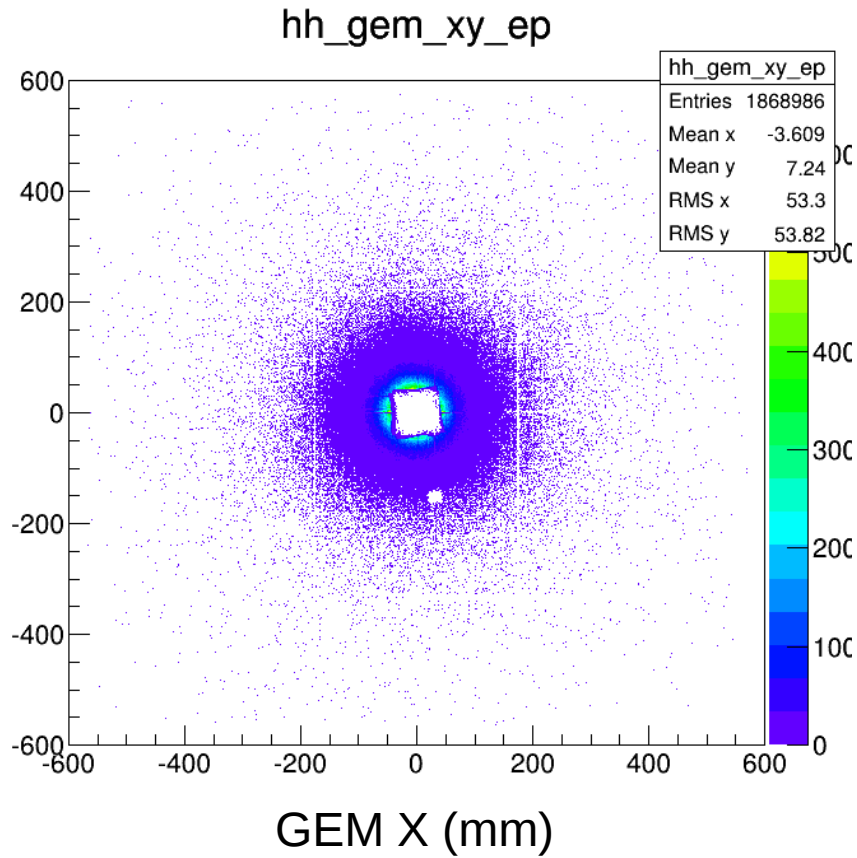
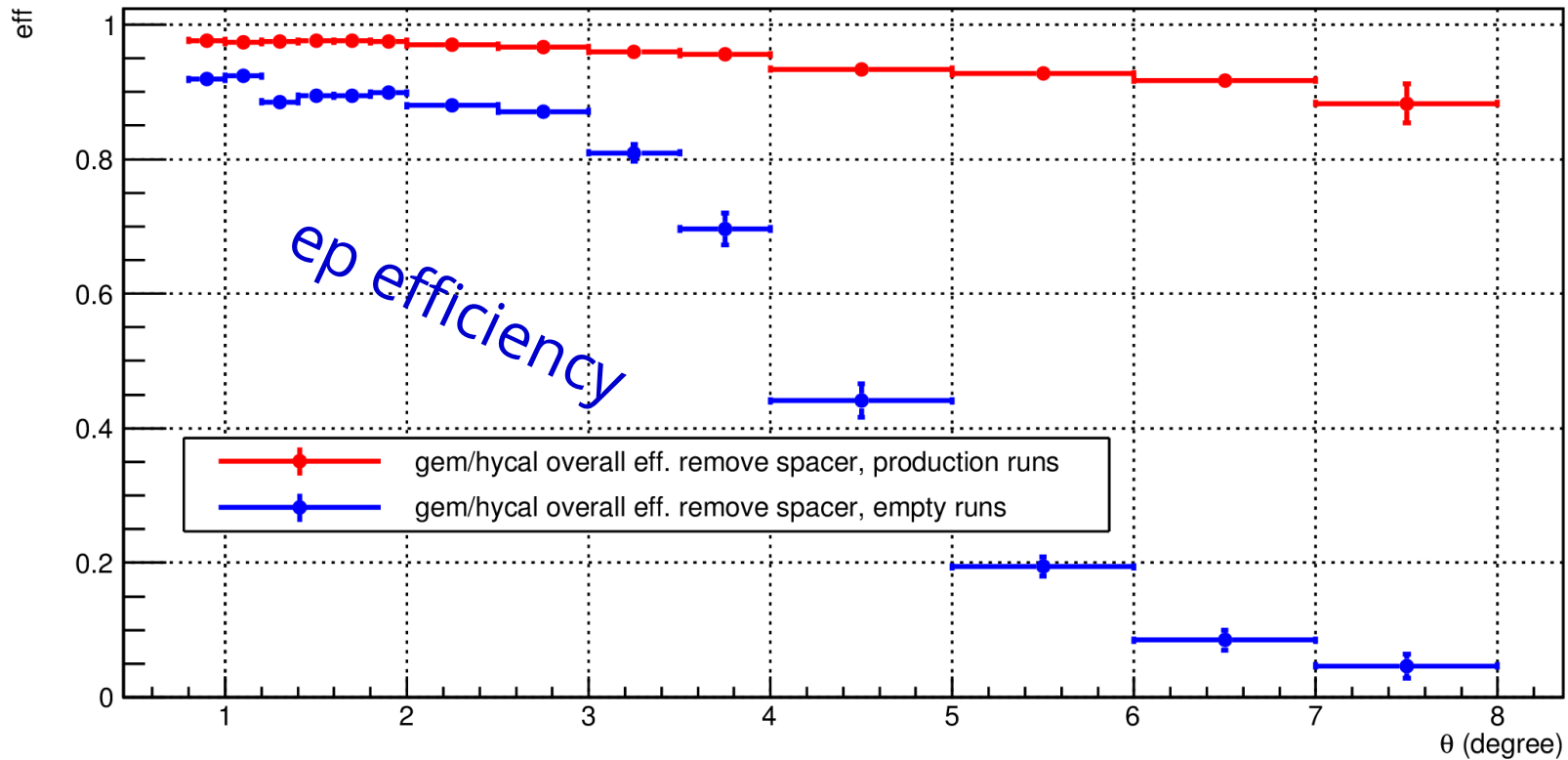


Empty target runs (17 runs)



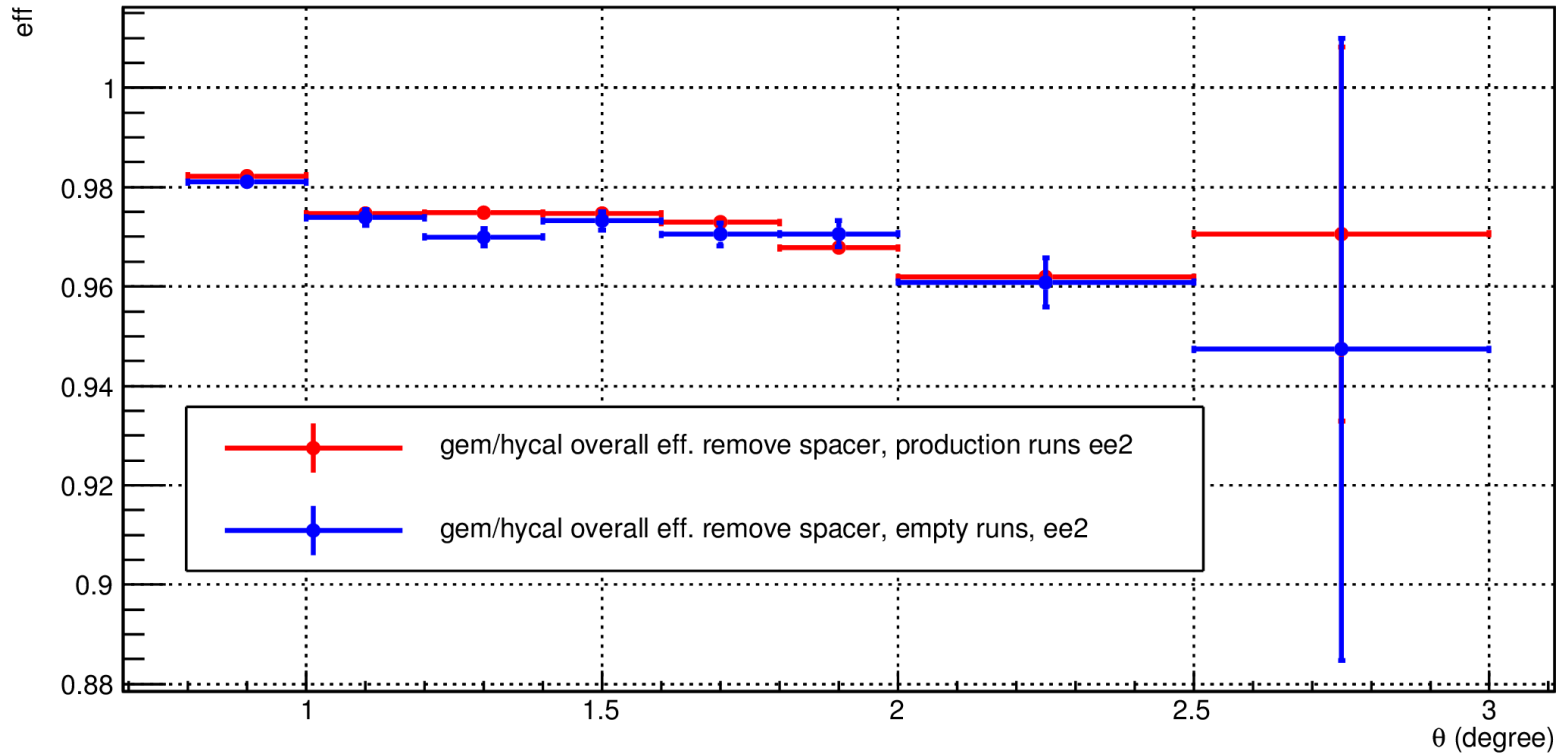
Efficiency compare empty run against production run



Red line: 2GeV production run (44 runs)

Blue line: 2GeV empty target run (17 runs)

Efficiency compare empty run against production run



Red line: 2GeV production run, using ee events

Blue line: 2GeV empty target run, using ee events

Double arm Moller events have much less effect from cosmics, however coverage is limited to smaller angles