

Shift Checklist How-to

Much of the information needed to fill out the shift checklist can be found on the *Monitoring* page in the PRad wiki. The *Monitoring* page can be accessed from the *PRad Experiment Shift Information* page at (https://wiki.jlab.org/pcrewiki/index.php/PRad_Experiment_Shift_Information#tab=Shift_Documentation). See Fig. 1

- Beam current and energy: Get from the PRad scalers GUI (usually on the top monitor of CLONPC16). See Fig. 3, marked by the red ovals.
- Beam positions X/Y on 2C24A, 2C21A and 2H01: Get from the PRad scalers GUI (usually on the top monitor of CLONPC16). See Fig. 3, marked by the red ovals.
- Collimator/Apperture position: Also from the PRad scalers GUI (See Fig. 3, marked by the blue circle).
- Trigger, event rate and live-time: Get from the CODA GUI.
- H target temp/flow rate/pressure and position/angle and vacuum box pressure: Get from target control window when applicable.
- Hycal temperature and Chiller water temperature: Get from the right viewer camera image on CLONPC17 (see Fig. 4, Hycal temp is shown by blue oval and chiller water temp is shown by the red oval.)
- Chiller water pressure: Get from the right viewer camera image on CLONPC17 by panning down using the slider on the right side of the window. The gauges are hard to read from the camera image, but if they look as in Fig 5, that is normal. Please move camera back to original position after use.
- HyCal HV on: Get from HyCal online monitoring GUI usually on CLONPC16 or can be restarted from the *Monitoring* page (see Fig. 6)
- GEM HV on: Get from GEM HV control GUI usually on CLONPC16 or can be restarted from the *Monitoring* page (see Fig. 7)
- GEM gas flow and cylinder pressure: The gas flow is not easily visible from camera image so the response should be n/a for now. For cylinder pressure go to Hall B gas shed behind the counting house (not Bldg 96B) and check cylinder pressure (see Fig. 8). If the cylinder pressure for the bottle in use is < 300 psi, please switch bottles and call an expert.
- Submit Scaler GUI: Right click on the PRad scalers GUI and select execute and the submit to logbook. This will open a comments page where you fill in any comments if needed and press submit.

- Additional power supplies: Look at pradbst1.jlab.org through pradbst6.jlab.org (see Fig. 9 there will be 6 such identical screens)

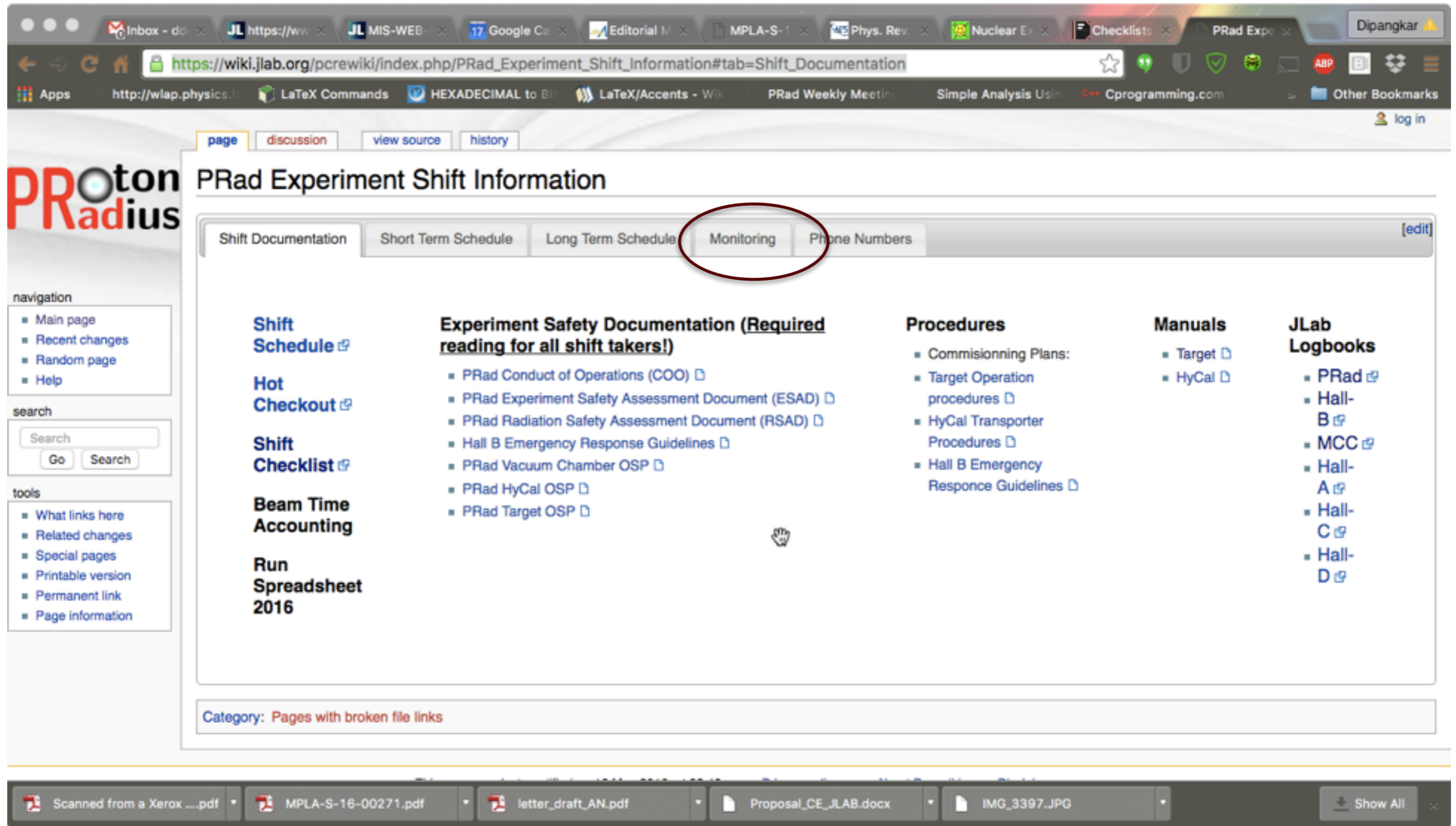


Fig. 1

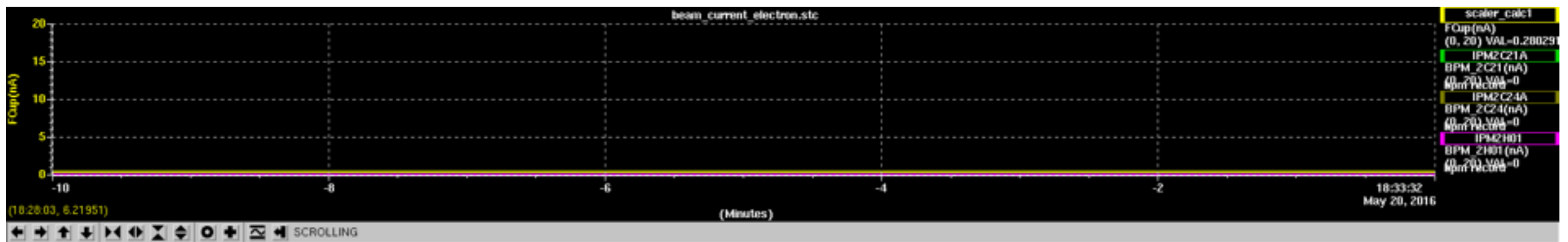


Fig. 2

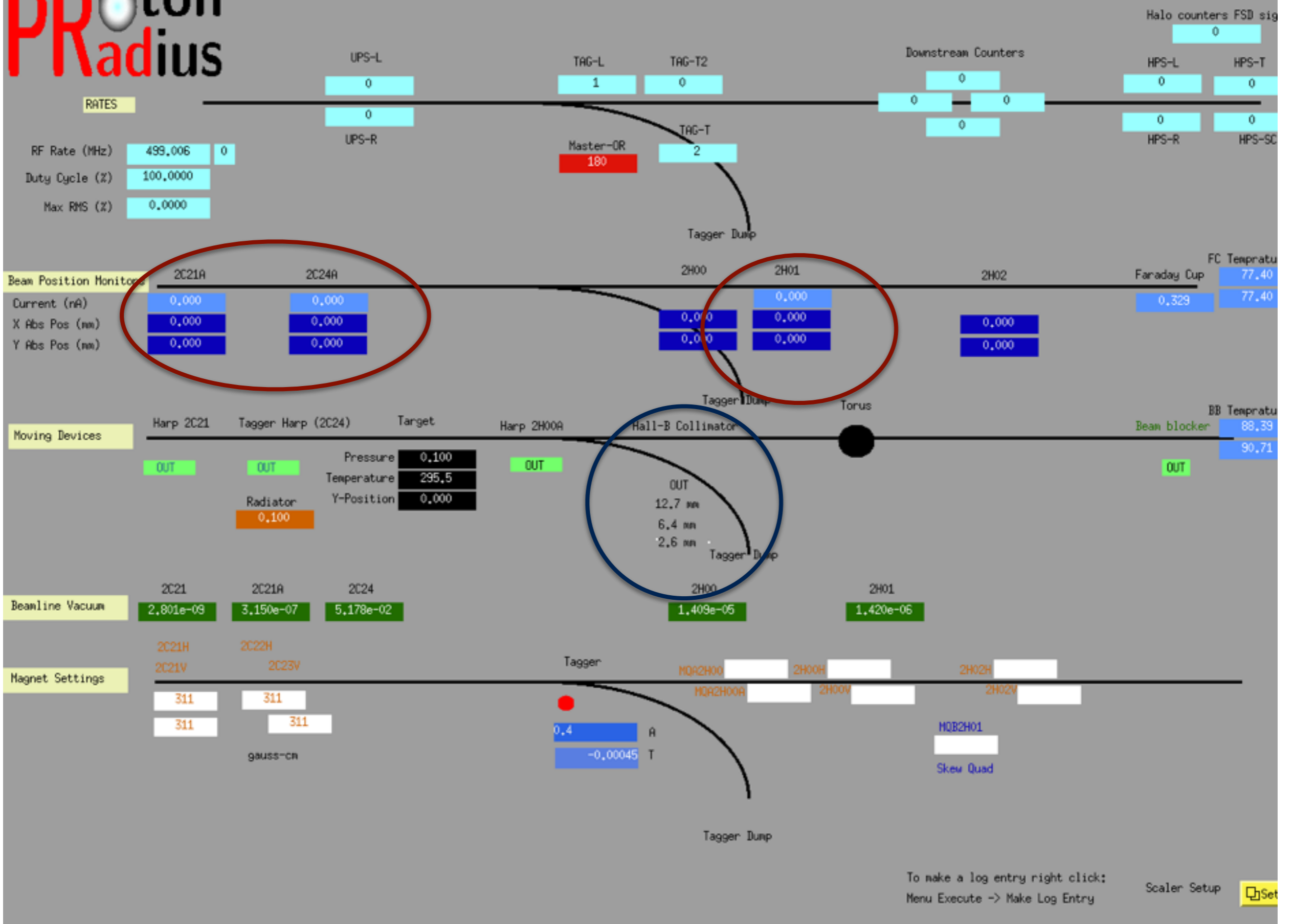


Fig. 3

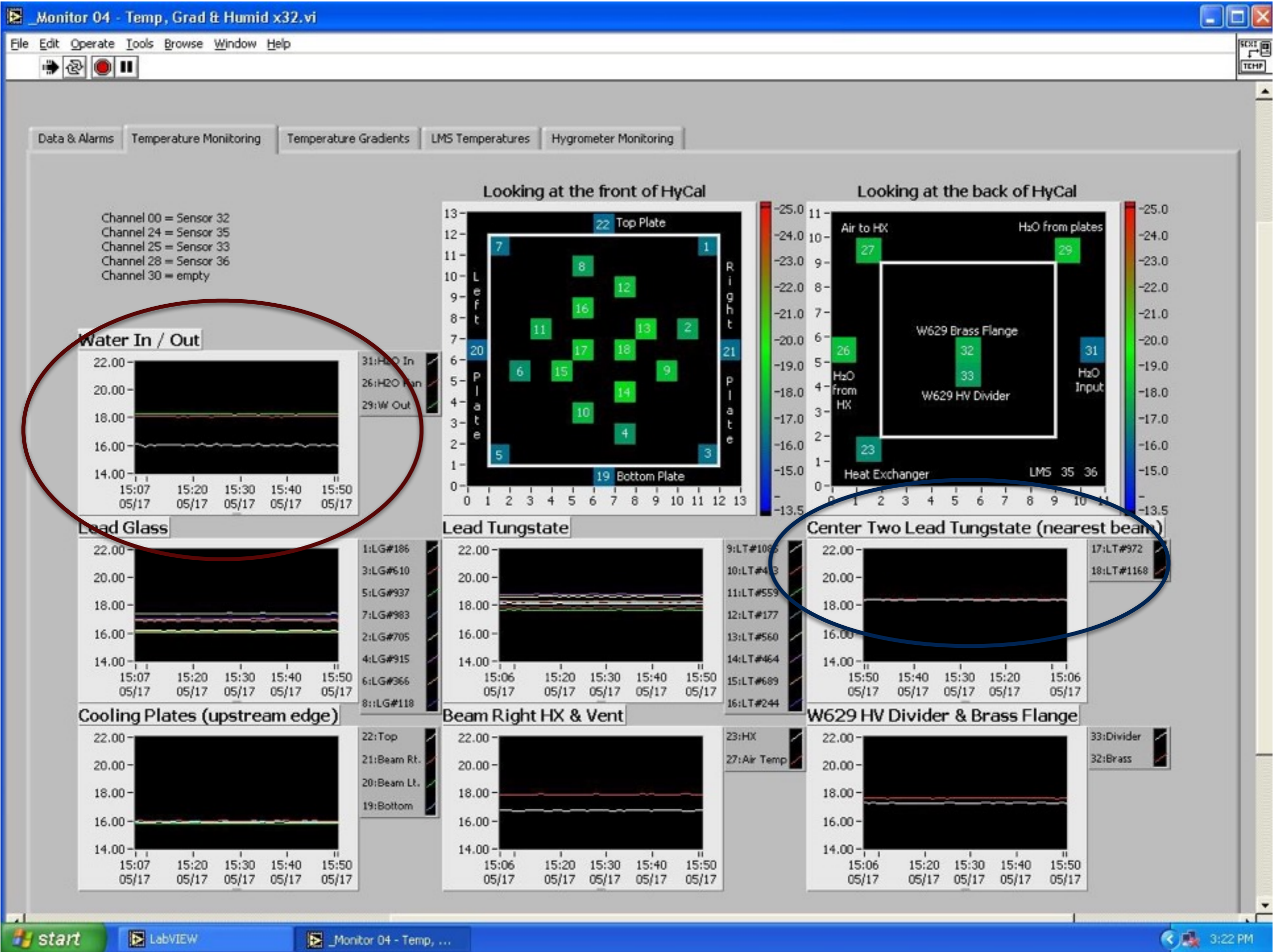


Fig. 4

2016-05-17 14:48:45



Fig. 5

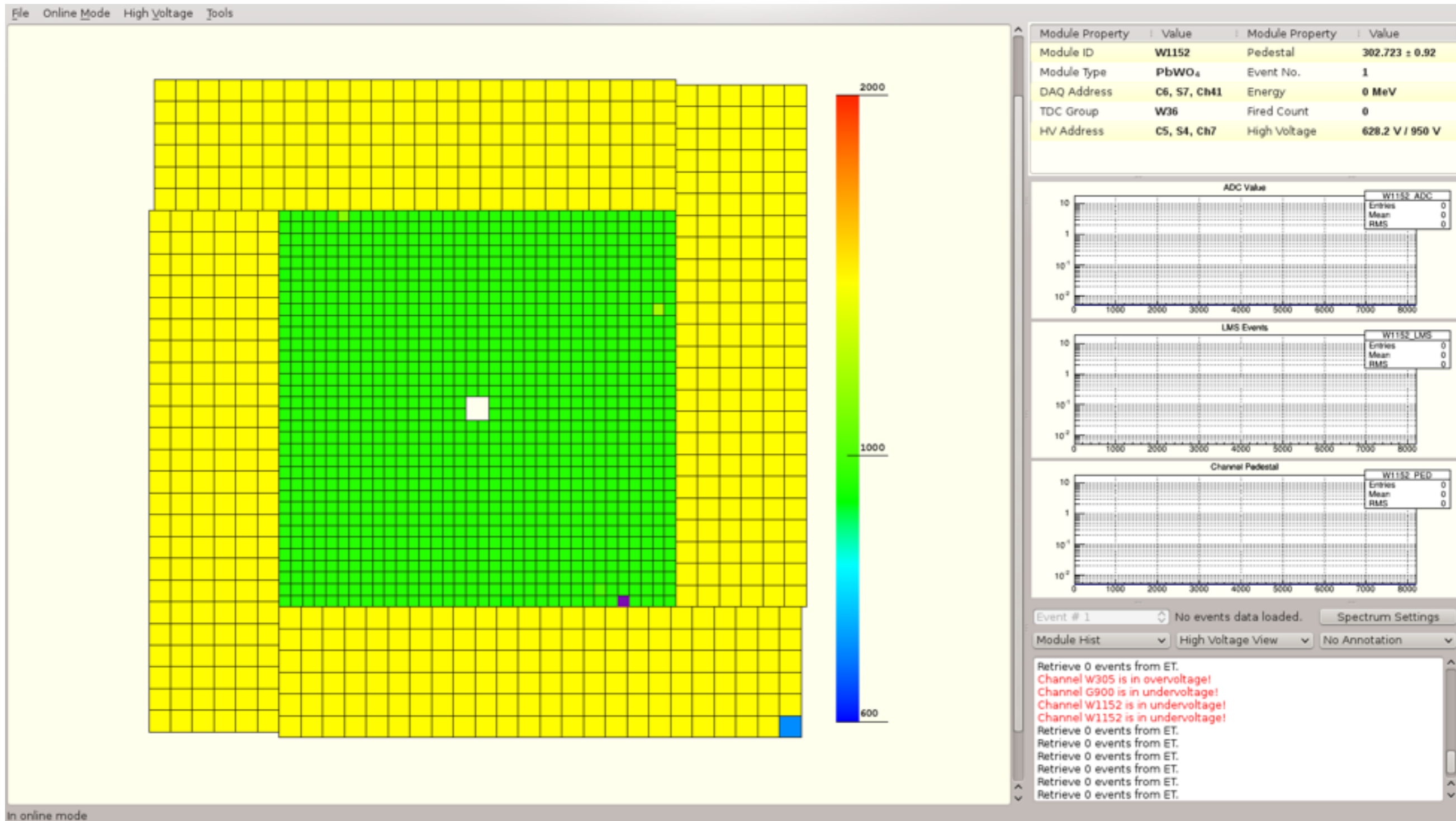


Fig. 6

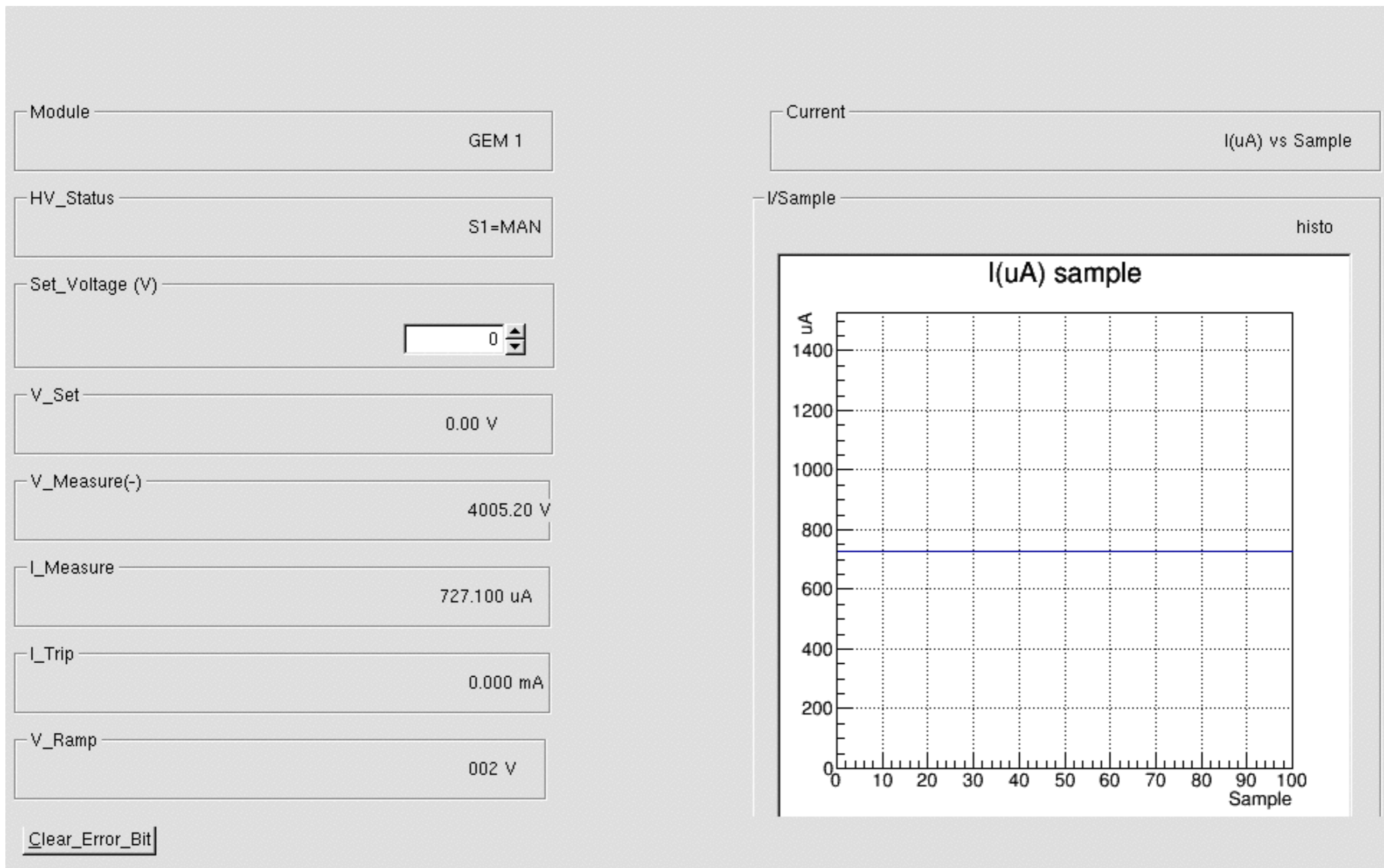


Fig. 7



Fig. 8

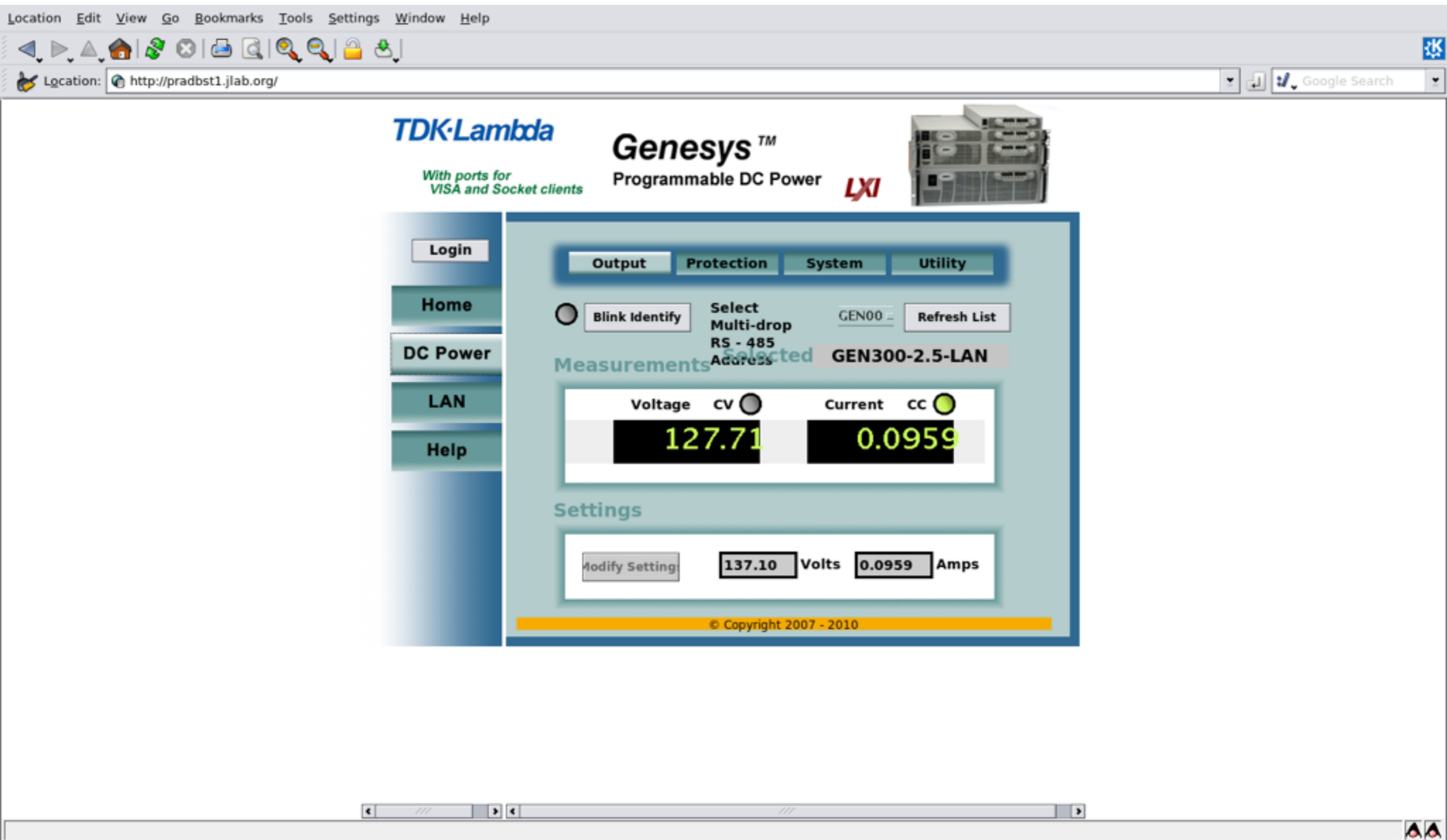


Fig. 9