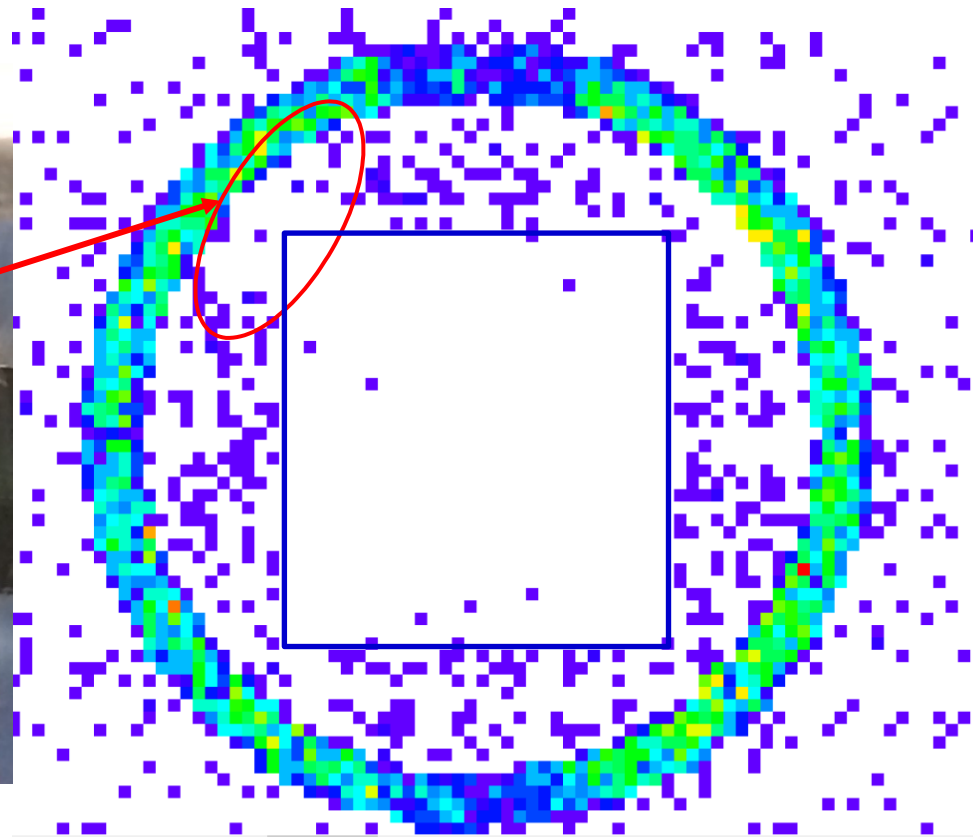
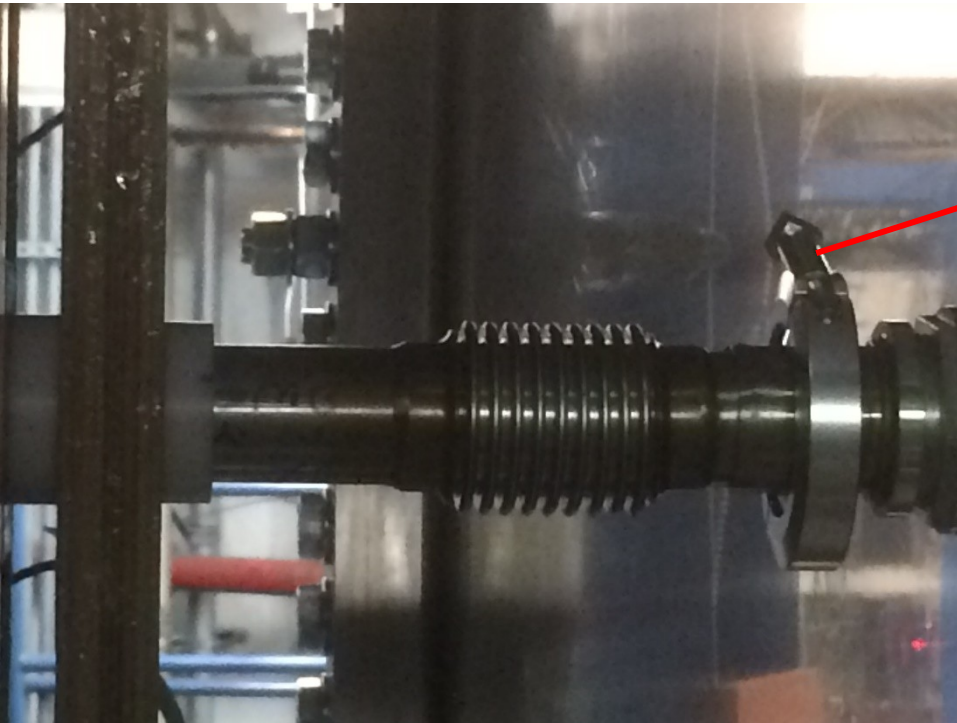
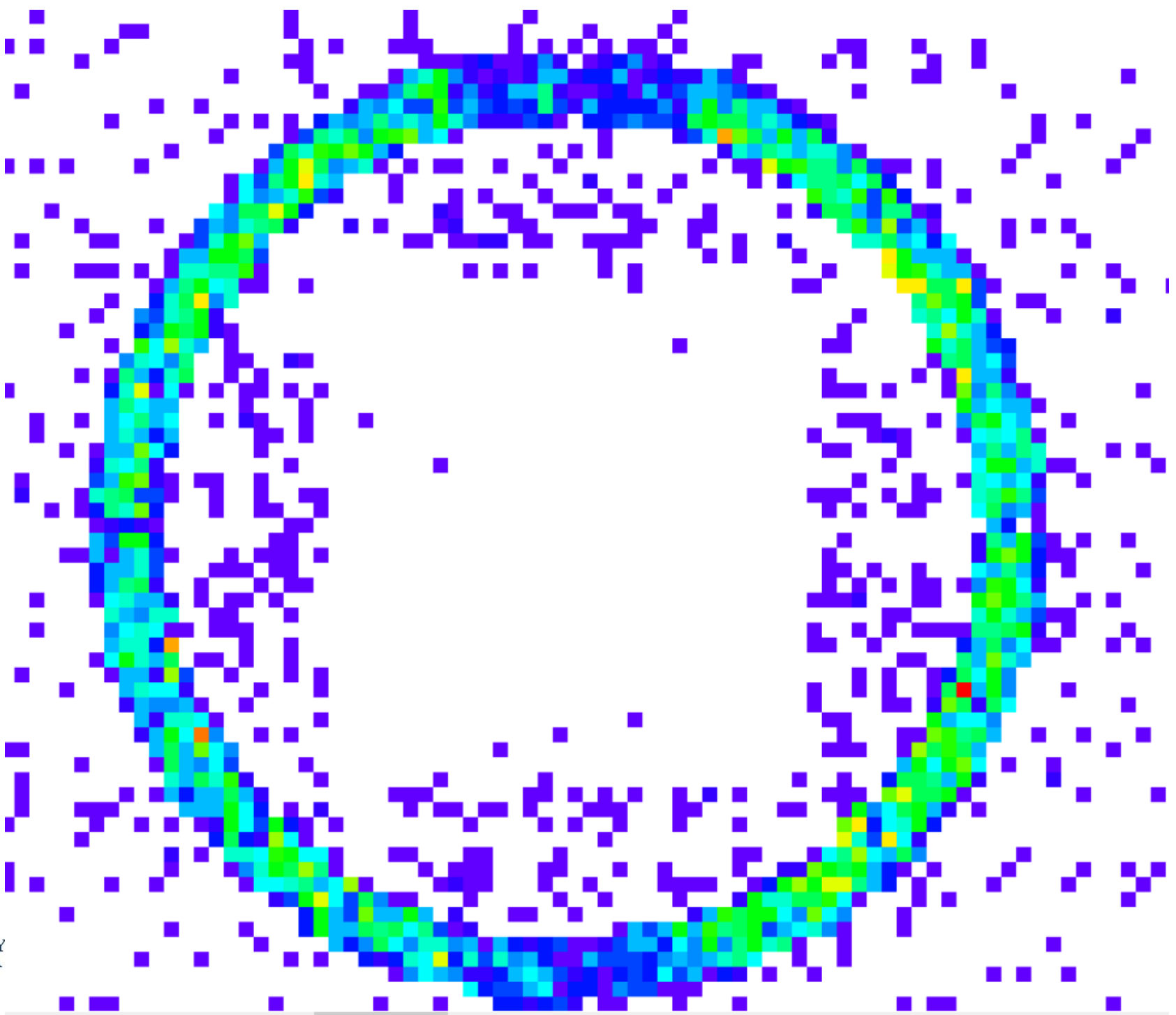


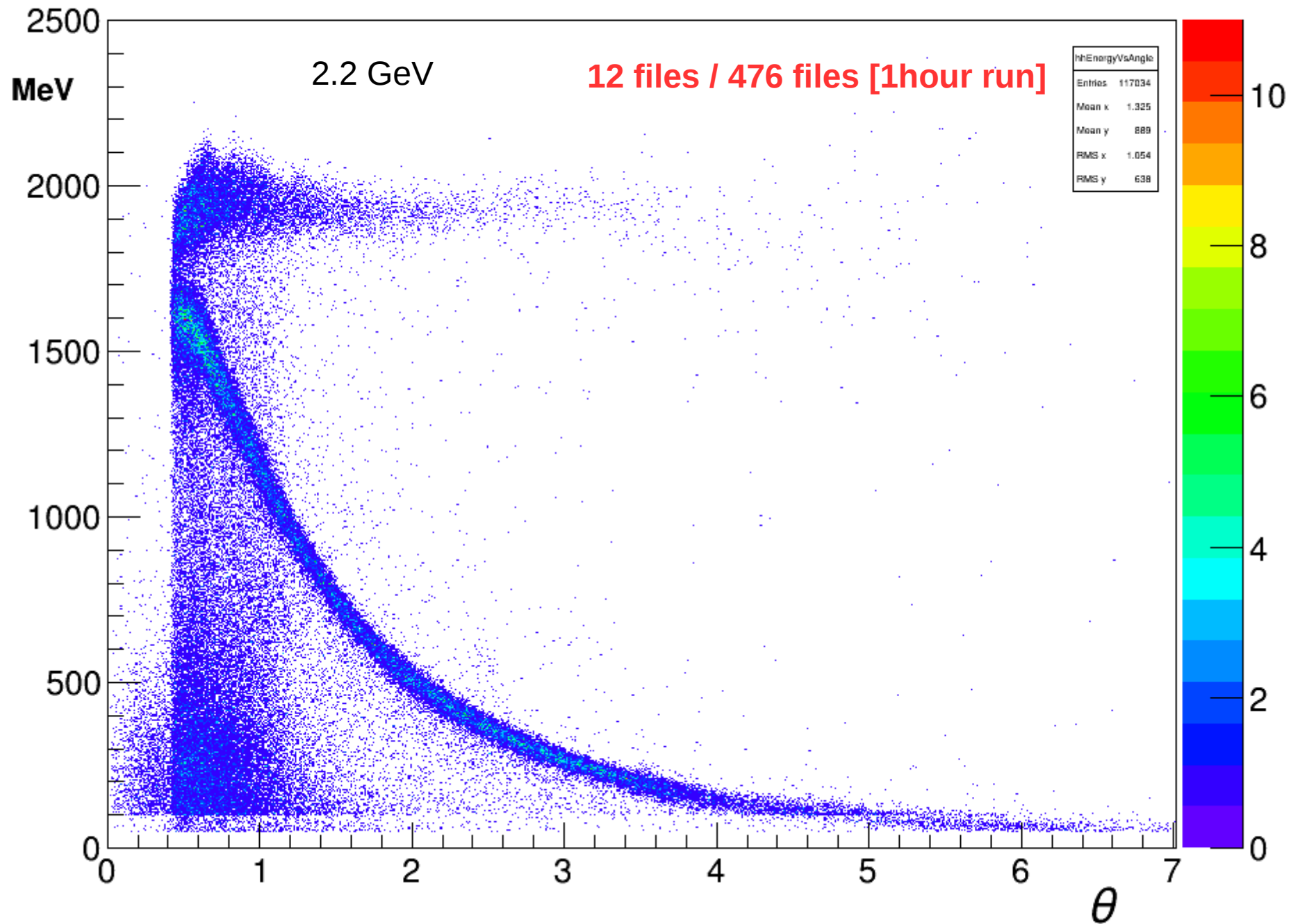
Effect of the of the flange connector on GEM data



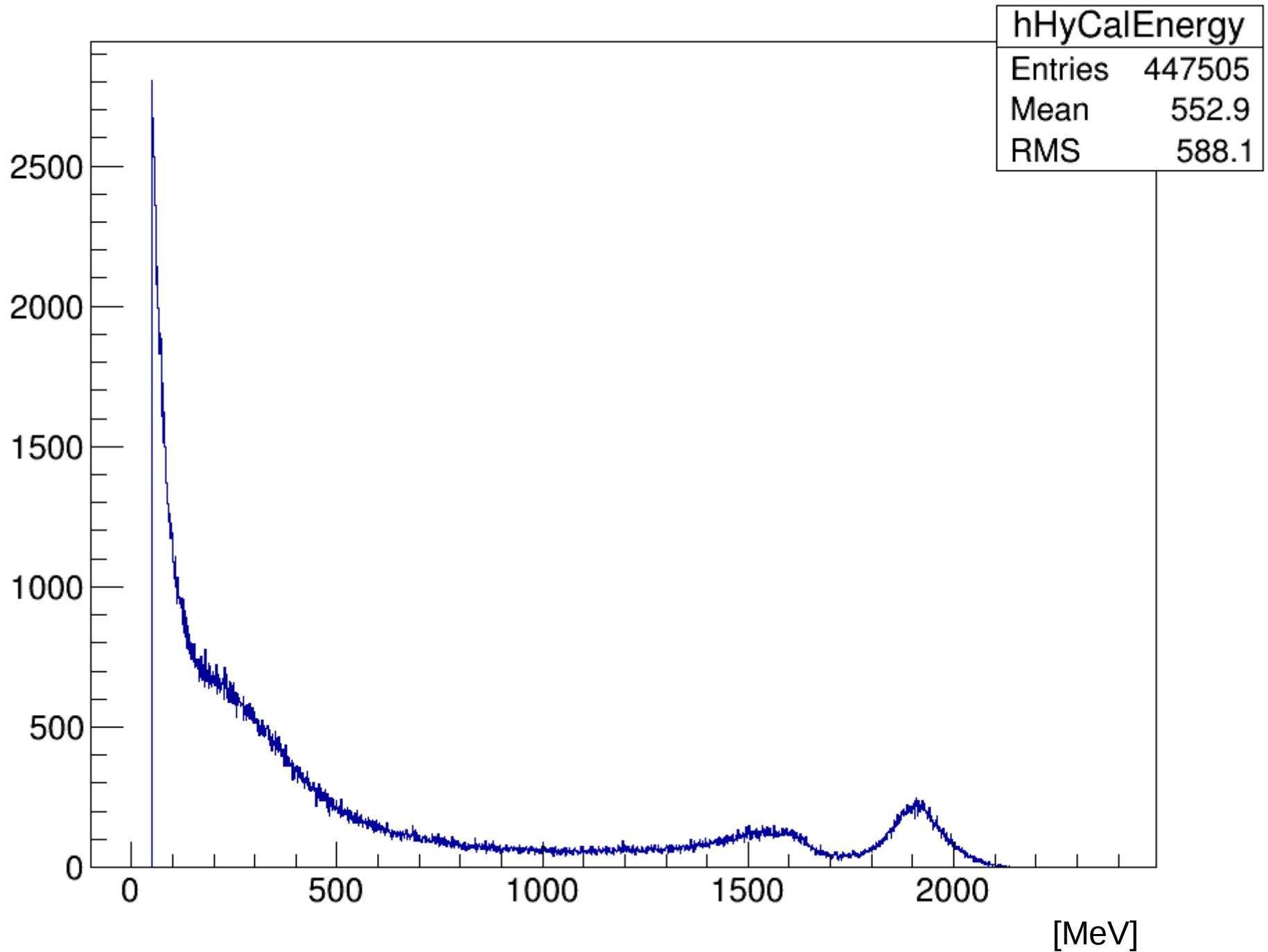
For Kondo



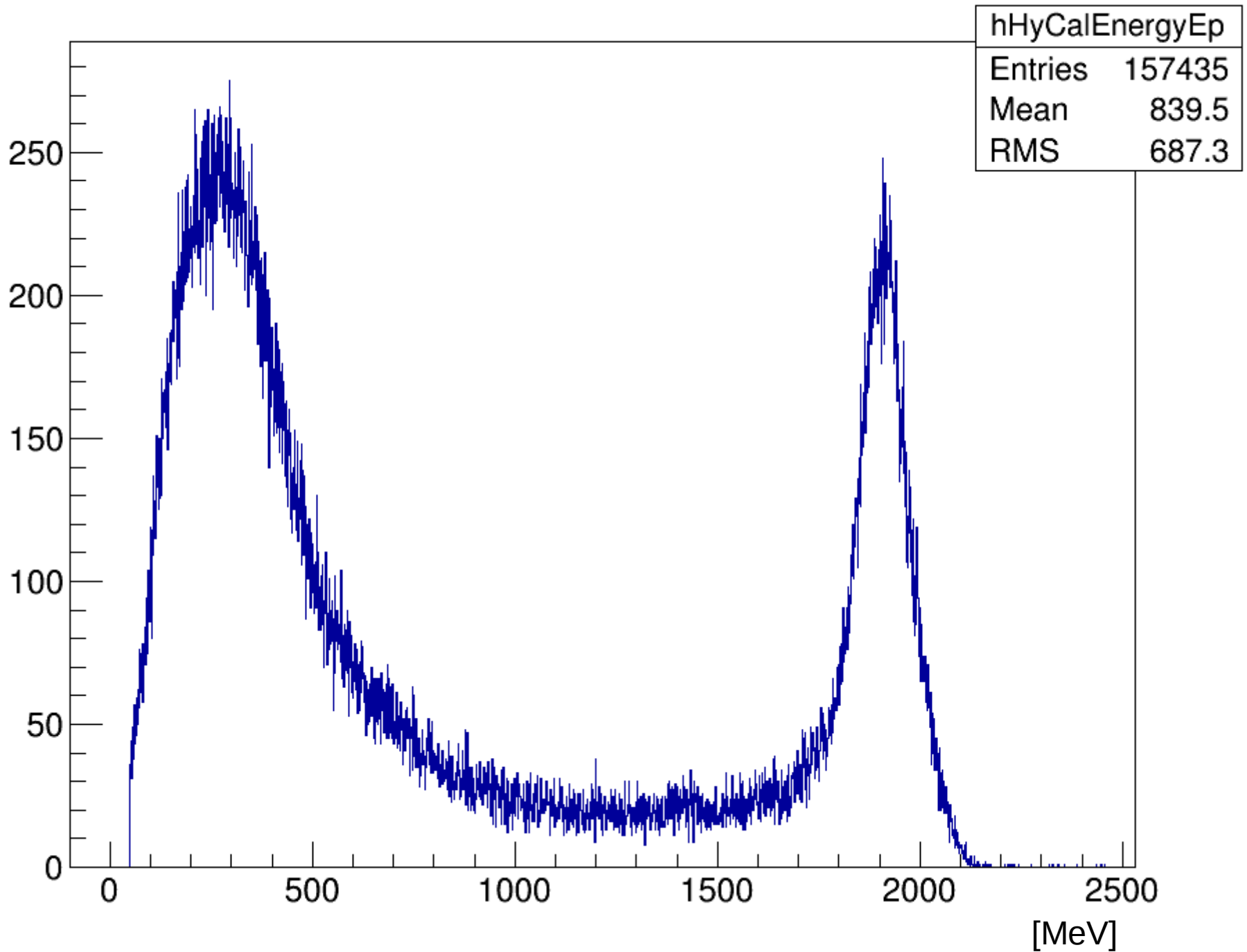
Energy Angle



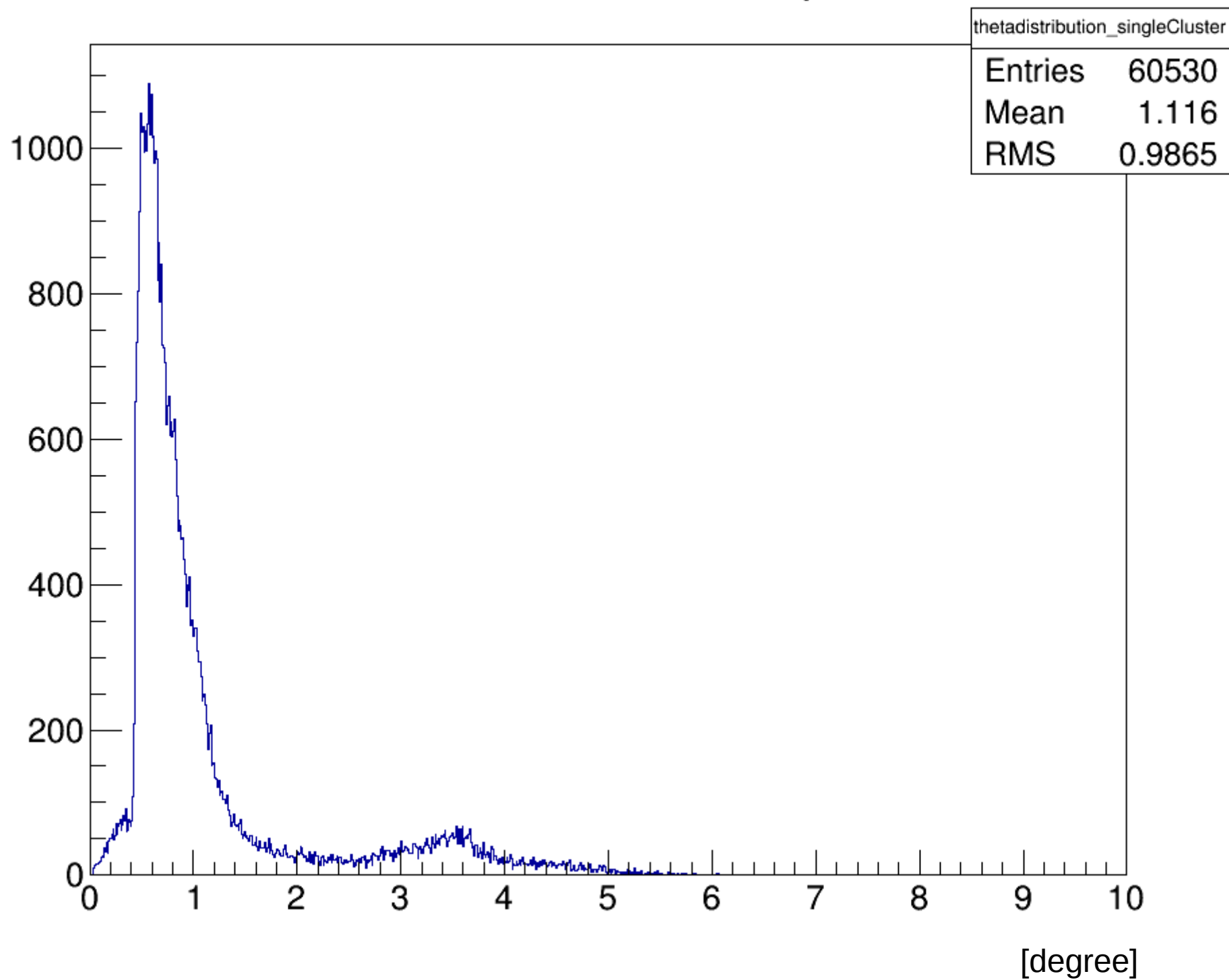
HyCal Energy [MeV]



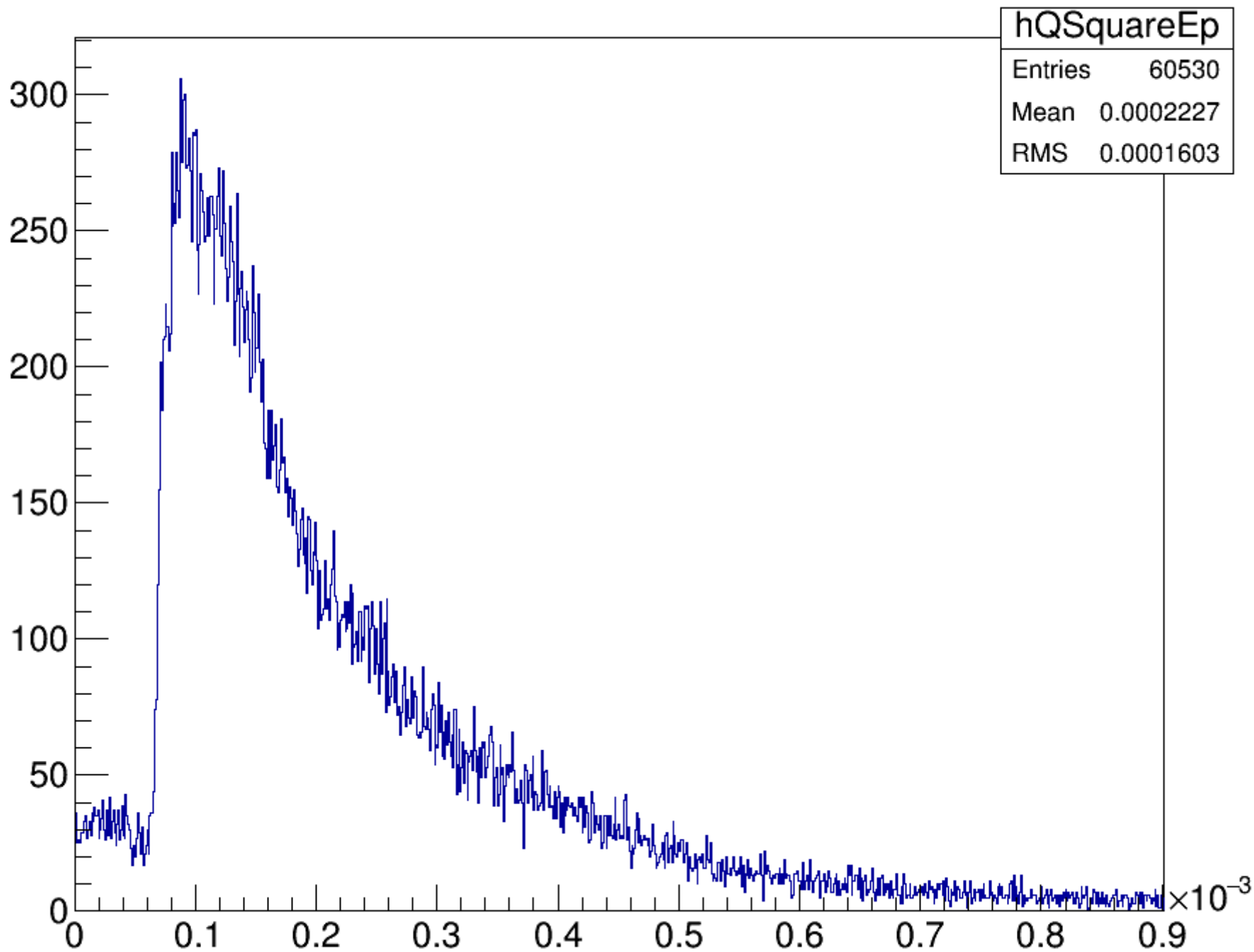
HyCal Energy Ep [MeV]

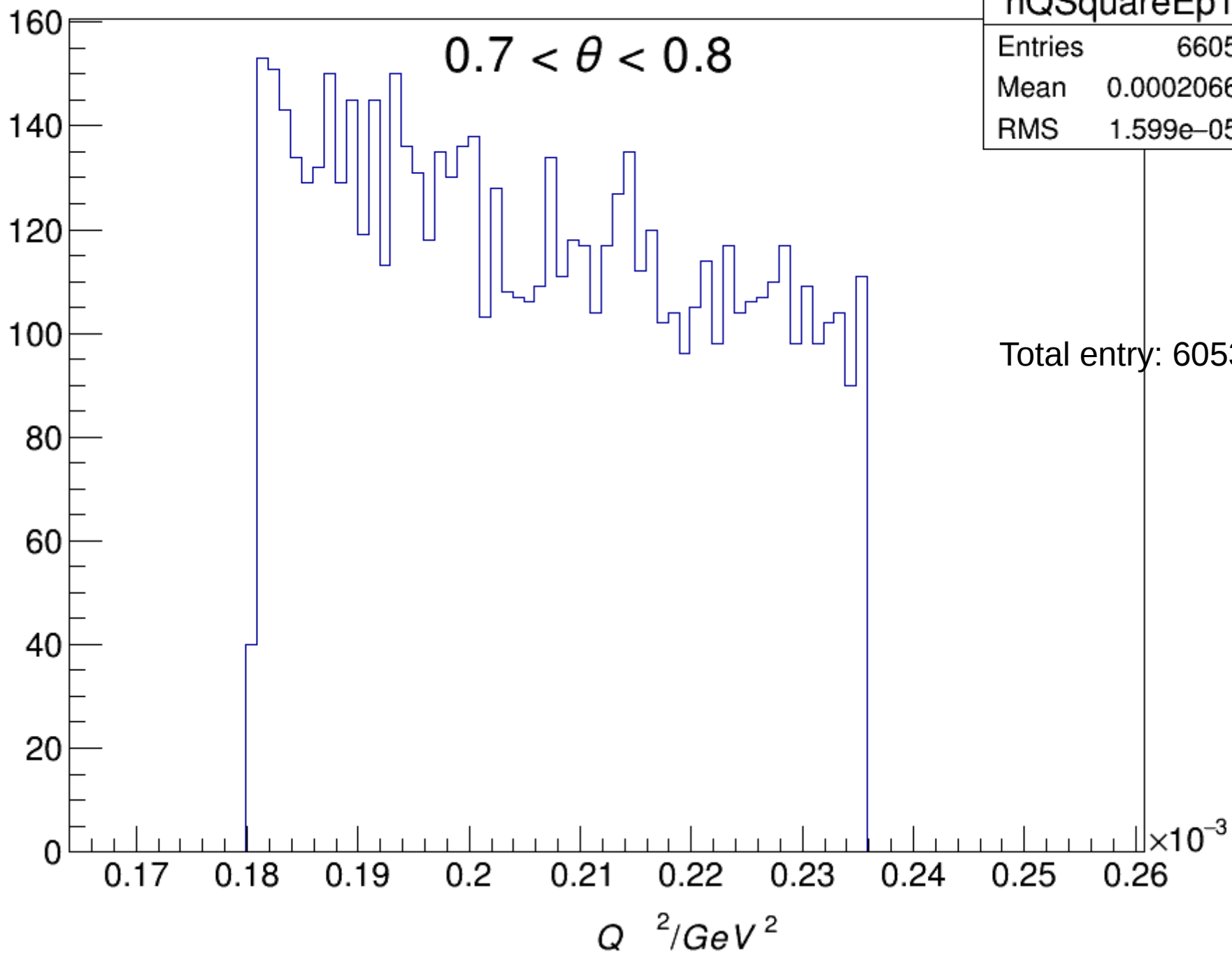


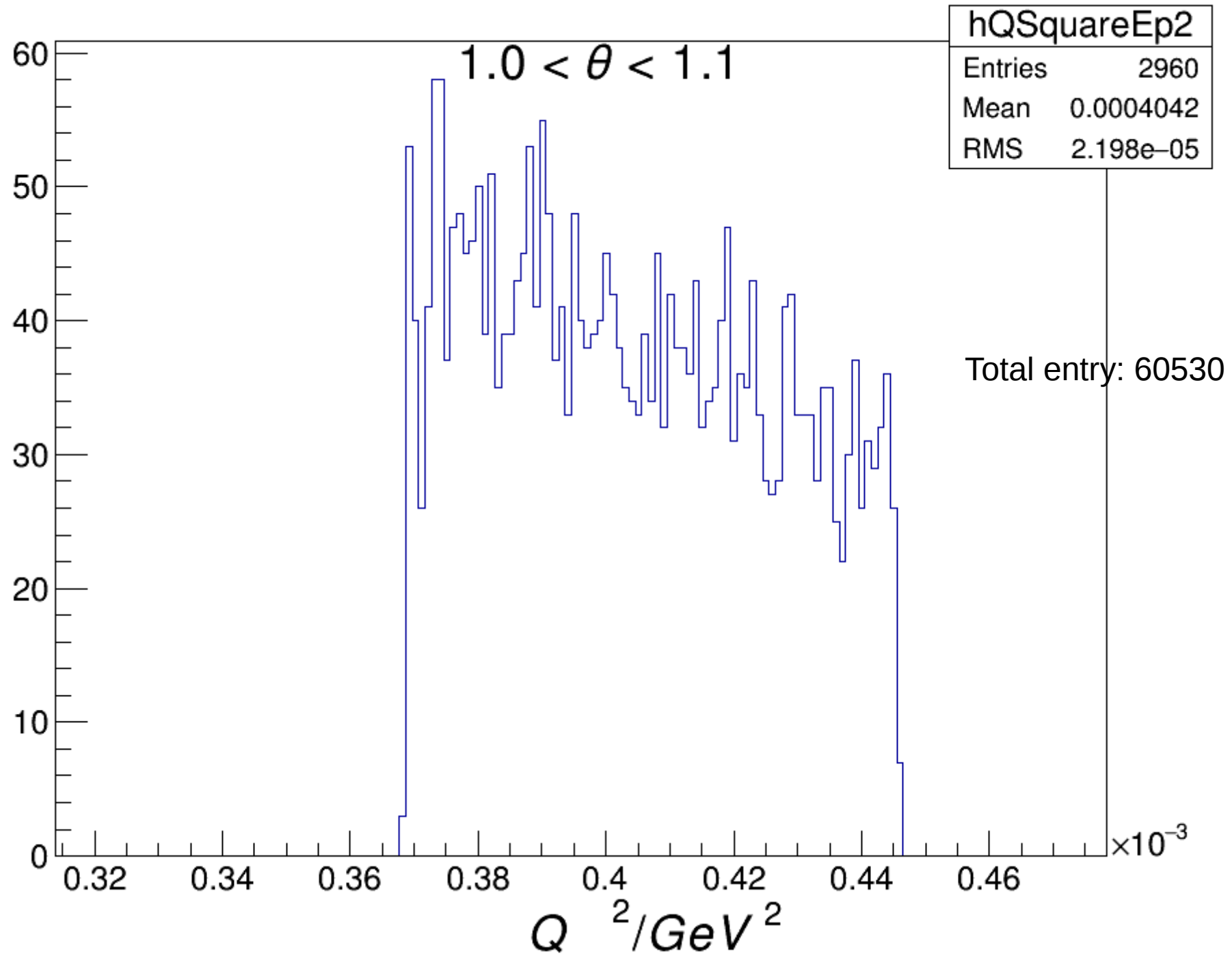
theta distribution Ep

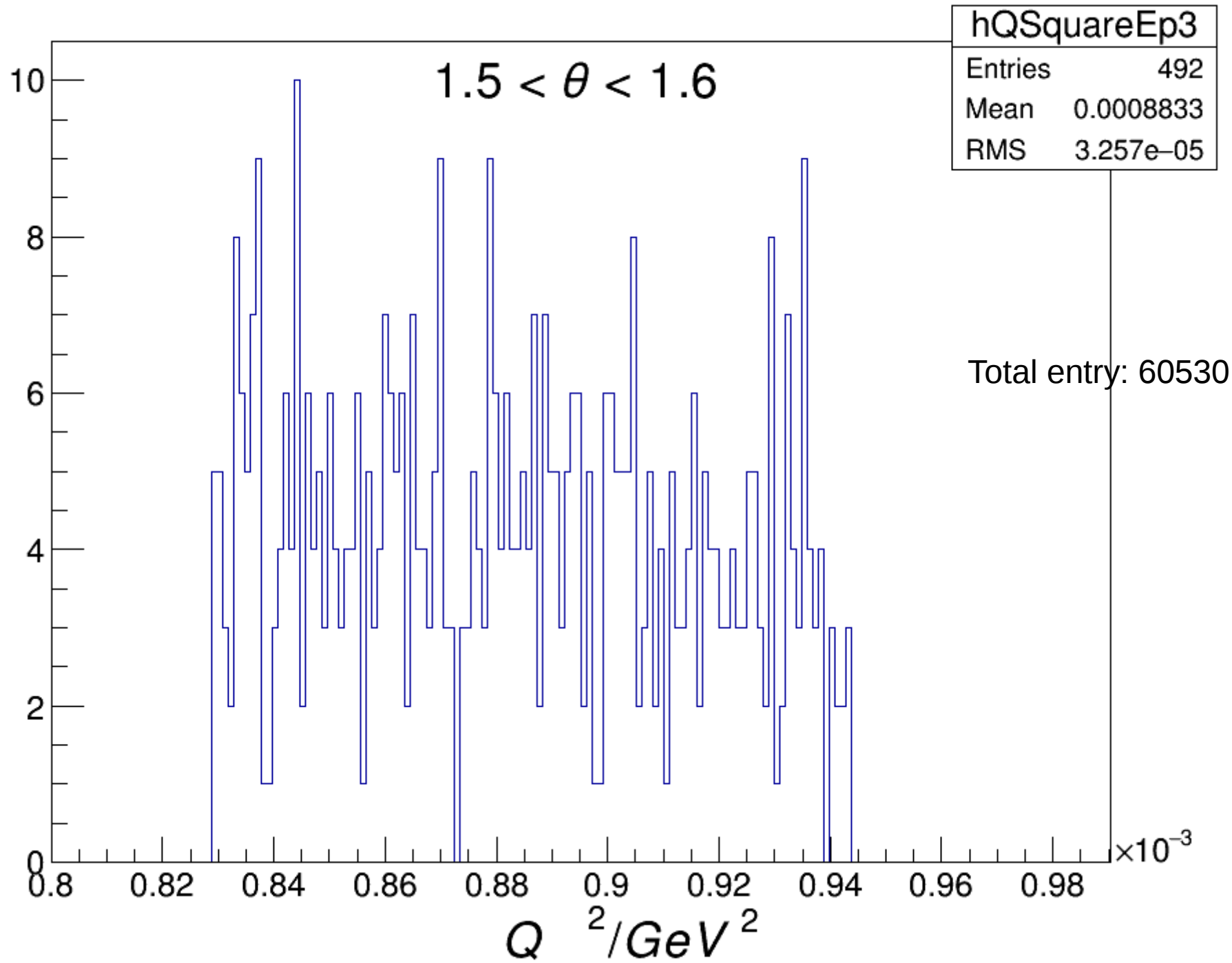


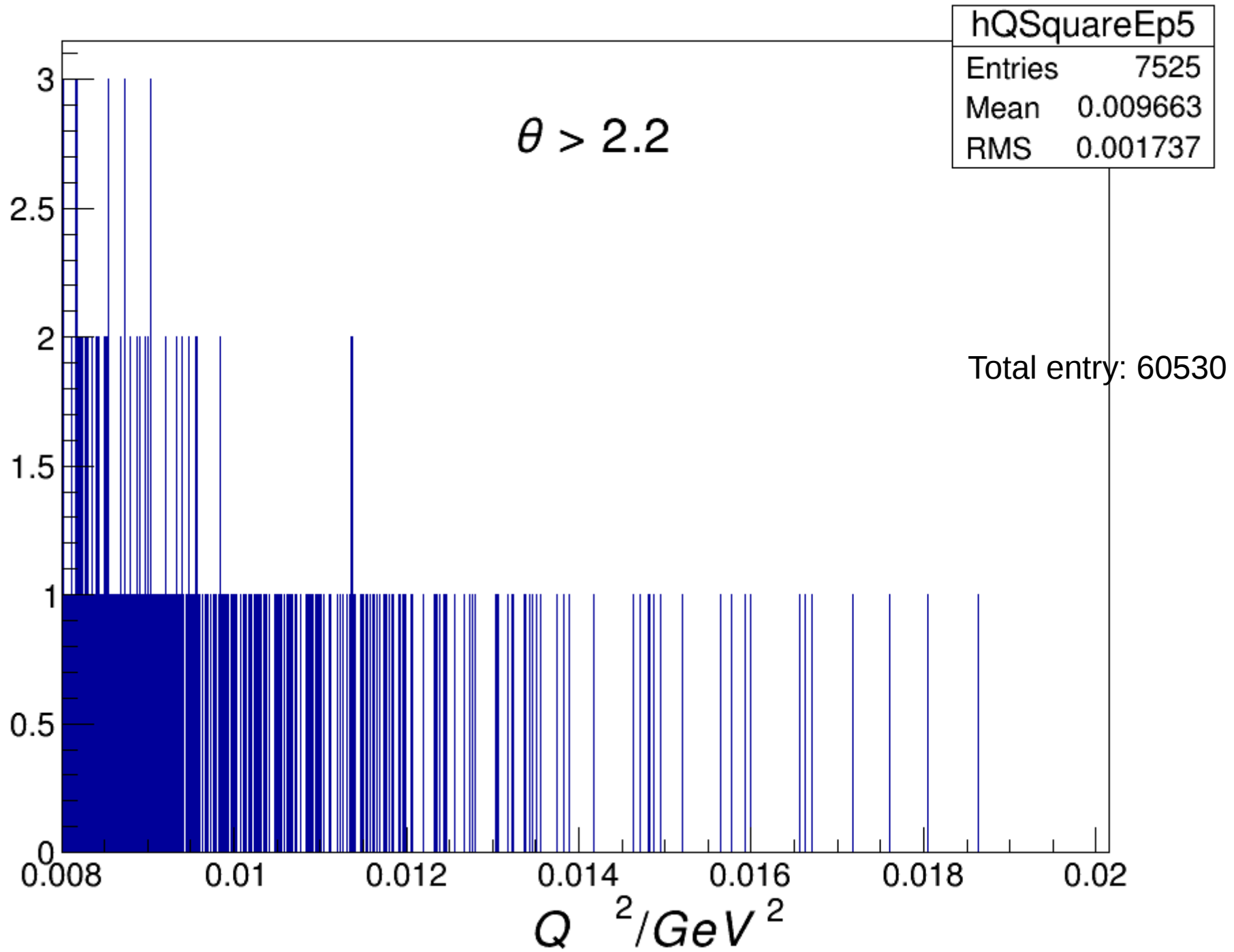
hQSquareEp / GeV² all





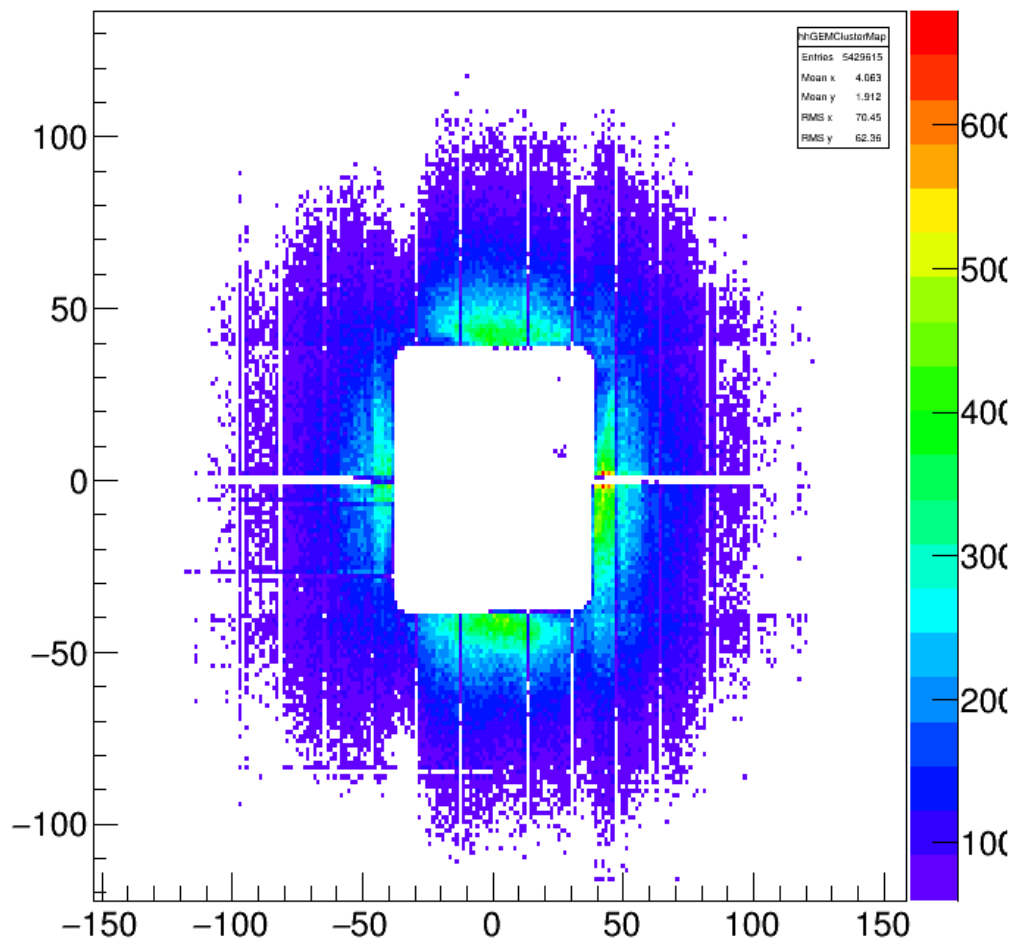




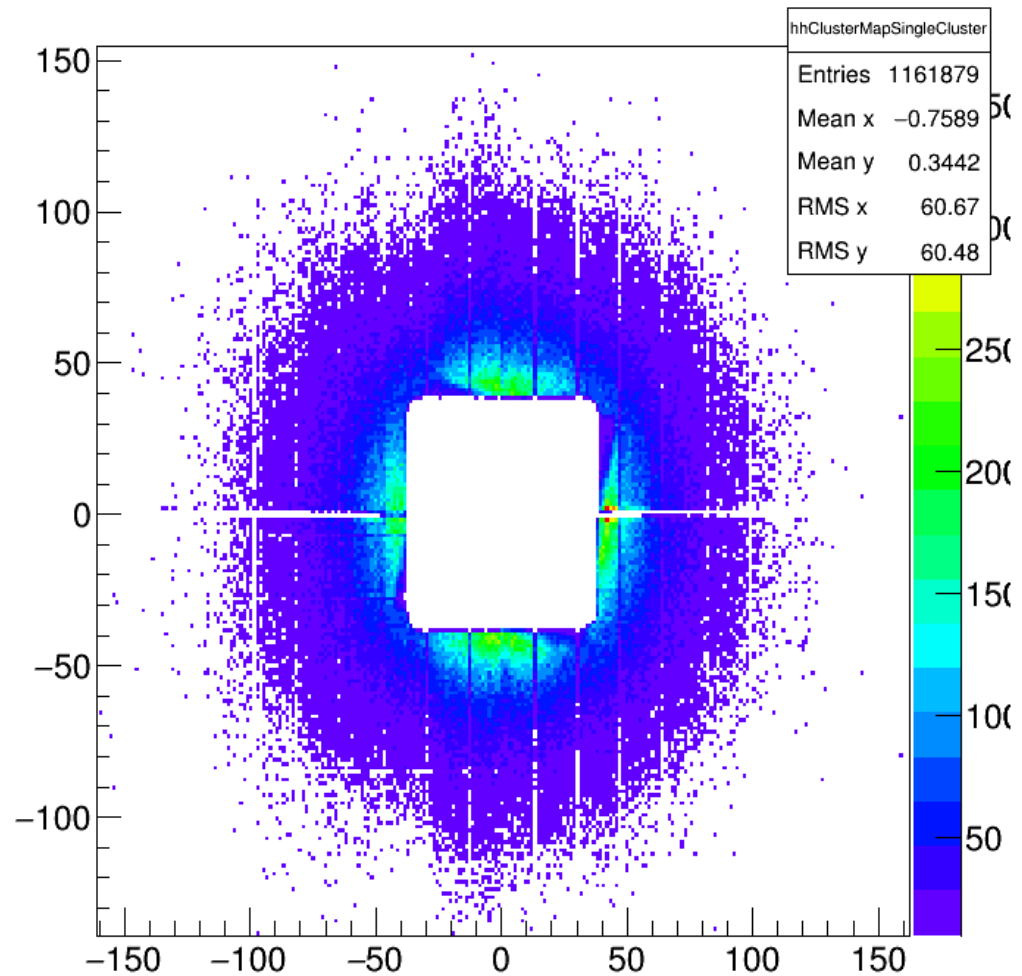


1.1 GeV

Cluster Map



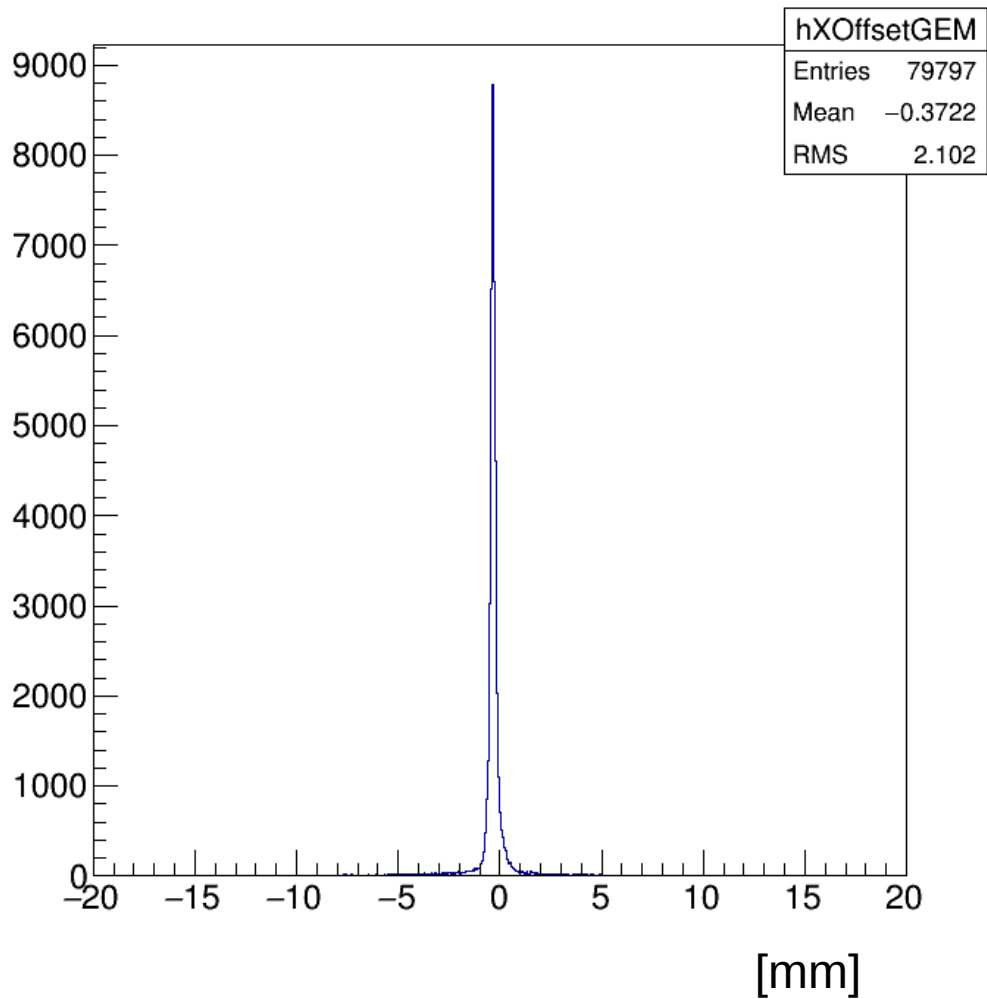
Cluster Map single cluster



All Coordinates Projected to a X-Y plane:

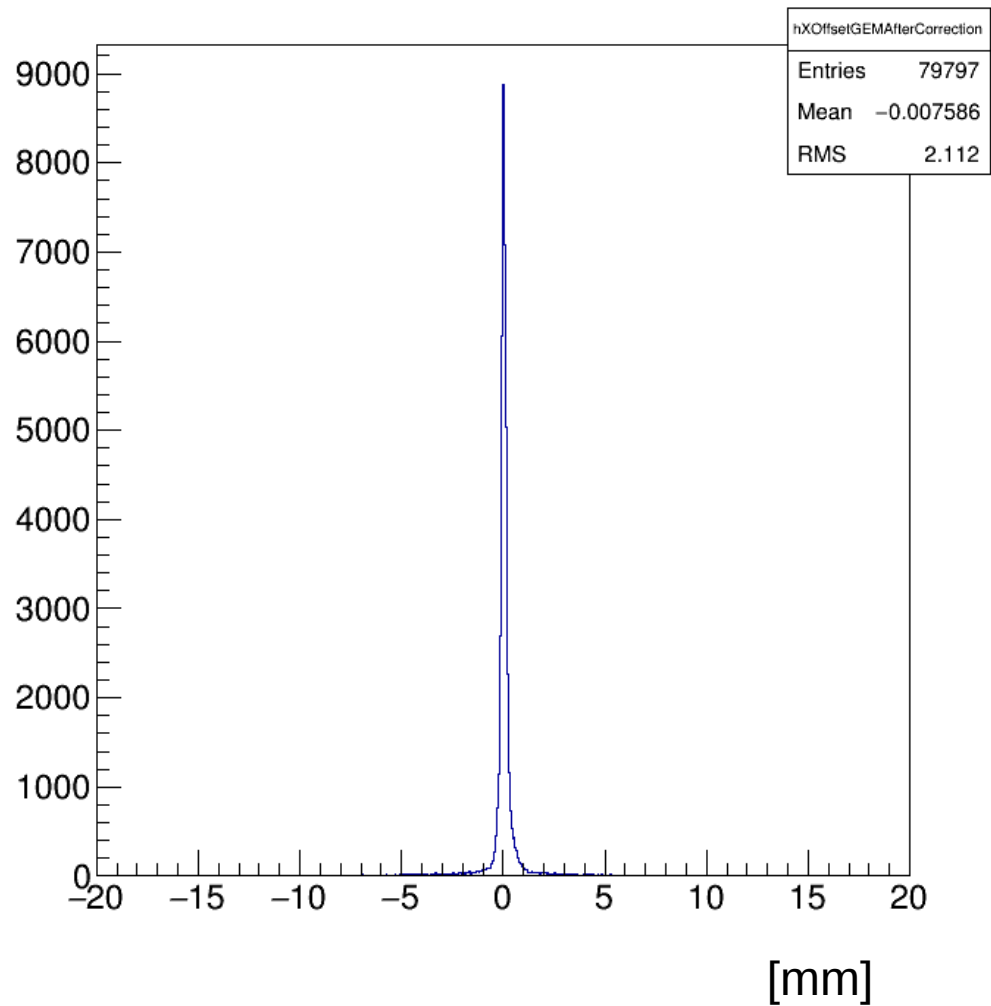
X-Y Origin at Target
Z = 5260mm [GEM2]

x offset between two GEM chambers



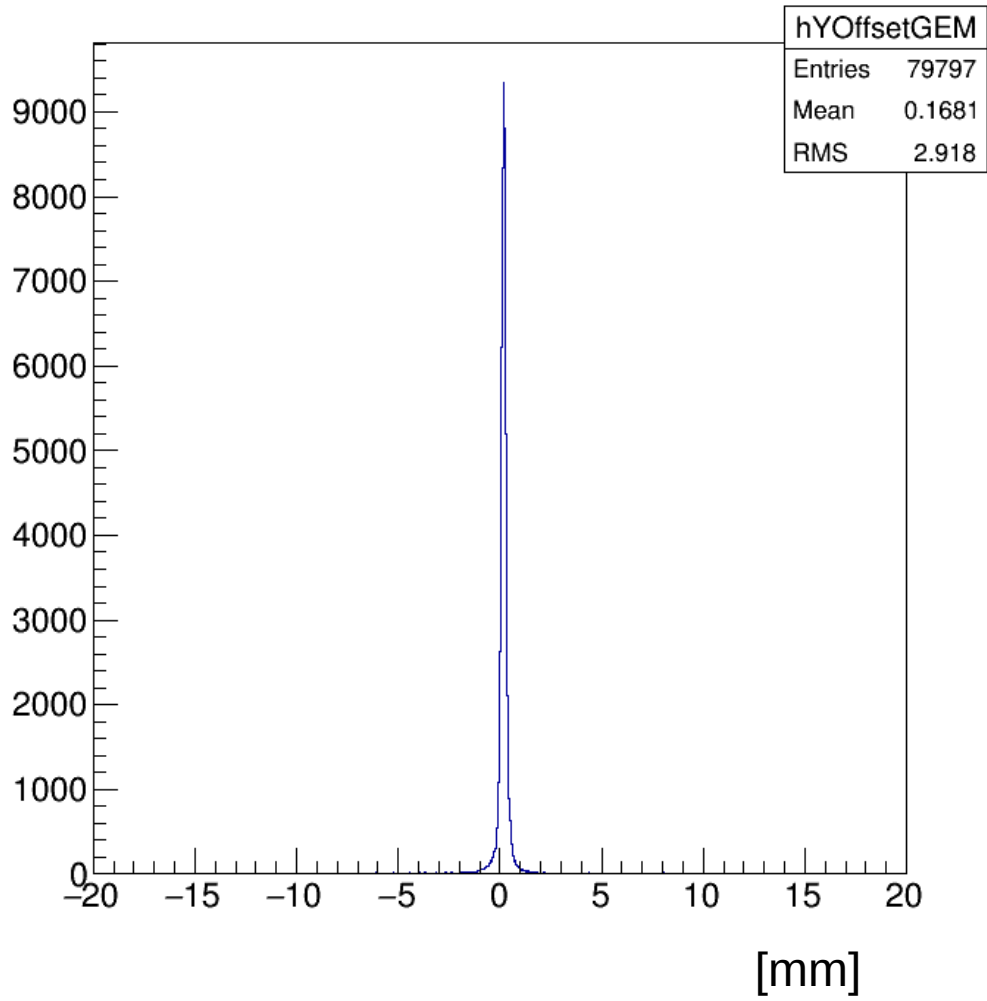
x_gem1 - x_gem2

x offset between two GEM chambers after correction

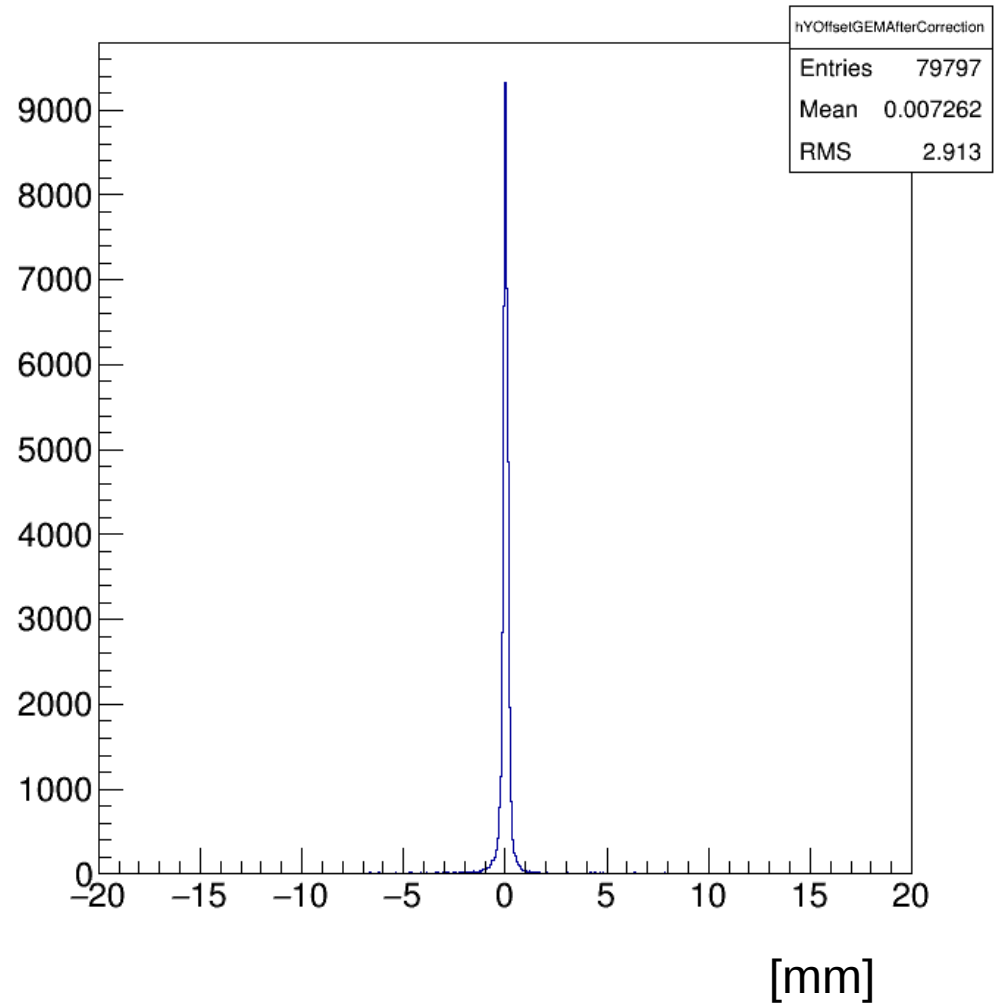


x_gem1 - x_gem2

y offset between two GEM chambers



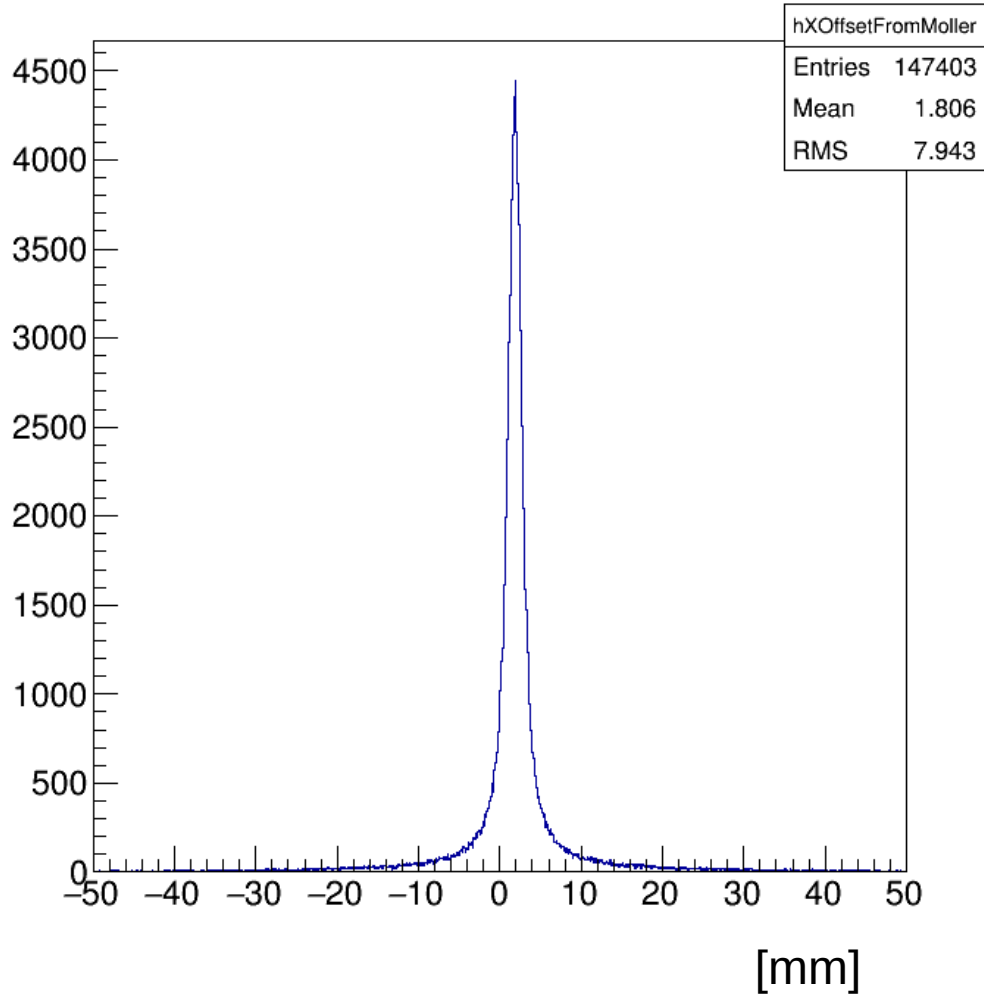
y offset between two GEM chambers after correction



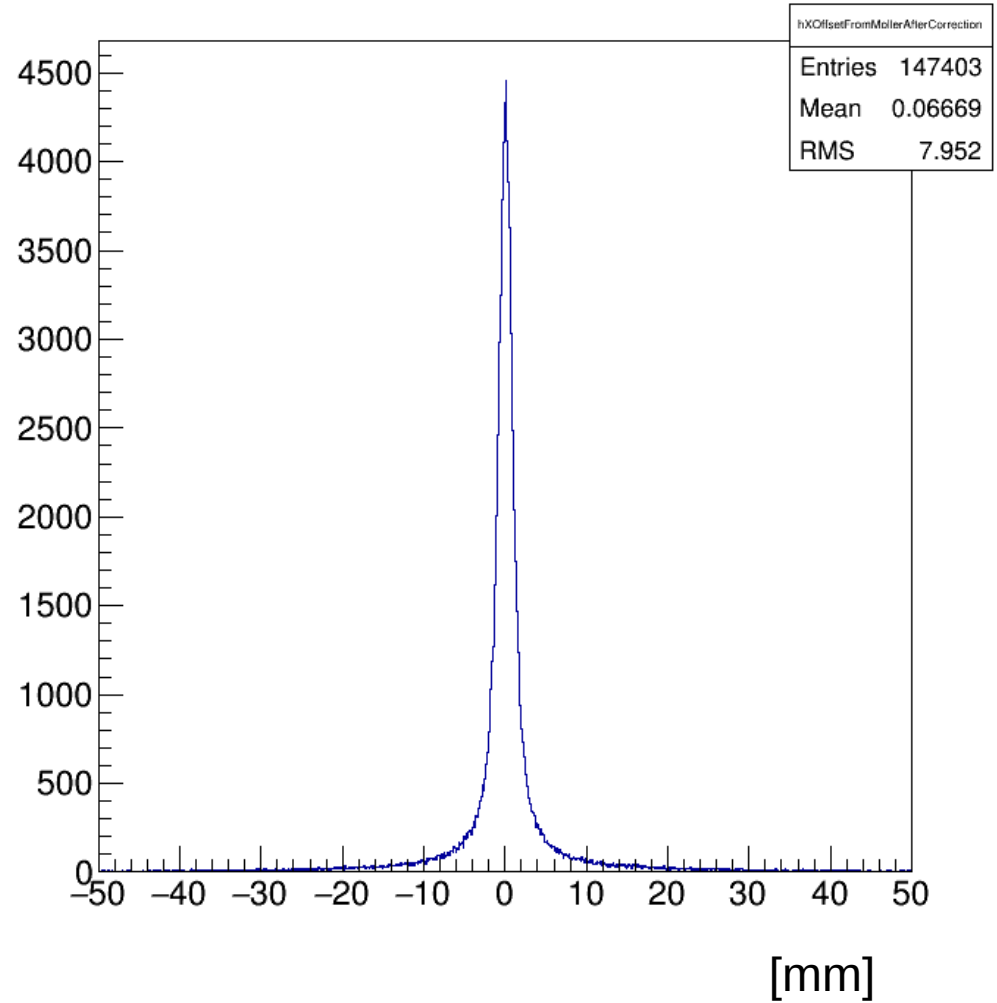
All Coordinates Projected to a X-Y plane

X-Y Origin at Target
Z = 5260mm [GEM2]

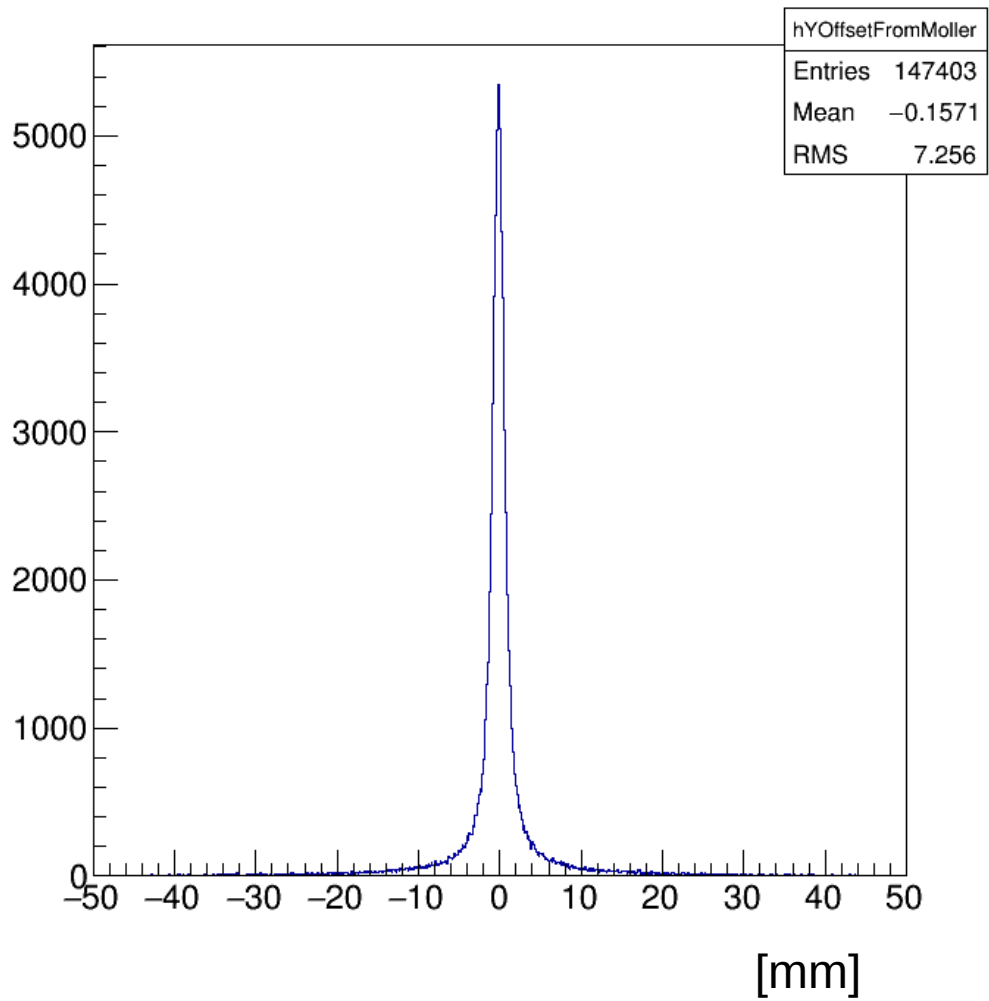
x offset using moller events



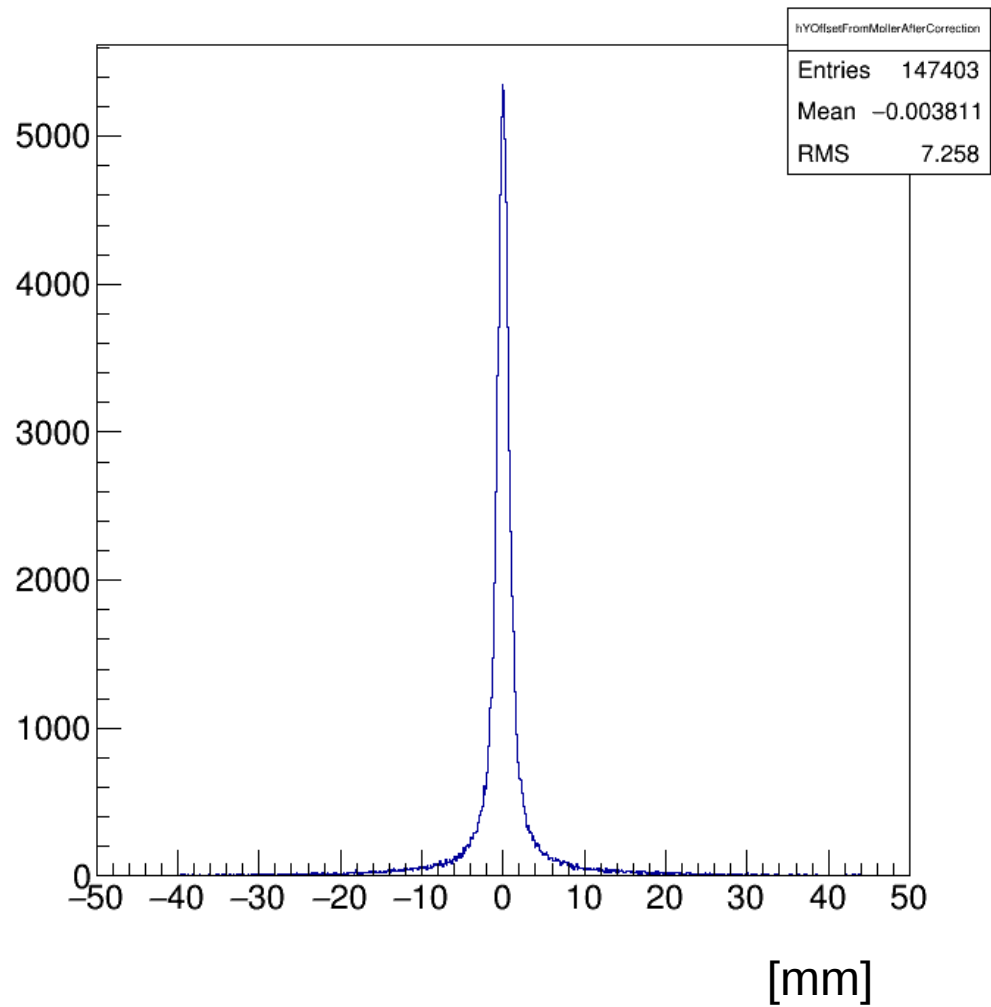
x offset using moller events after correction



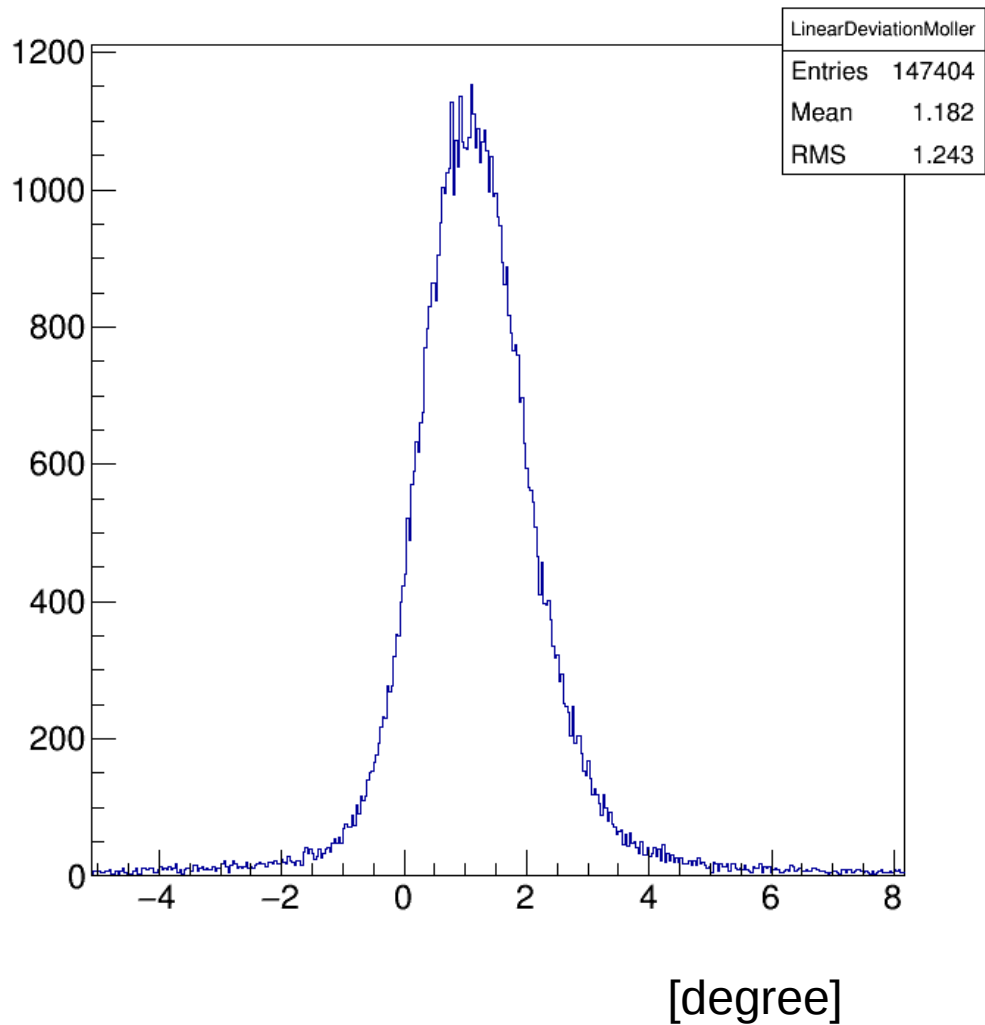
y offset using moller events



y offset using moller events after correction



Moller Clusters Linear Deviation



Moller Clusters Linear Deviation after correction

