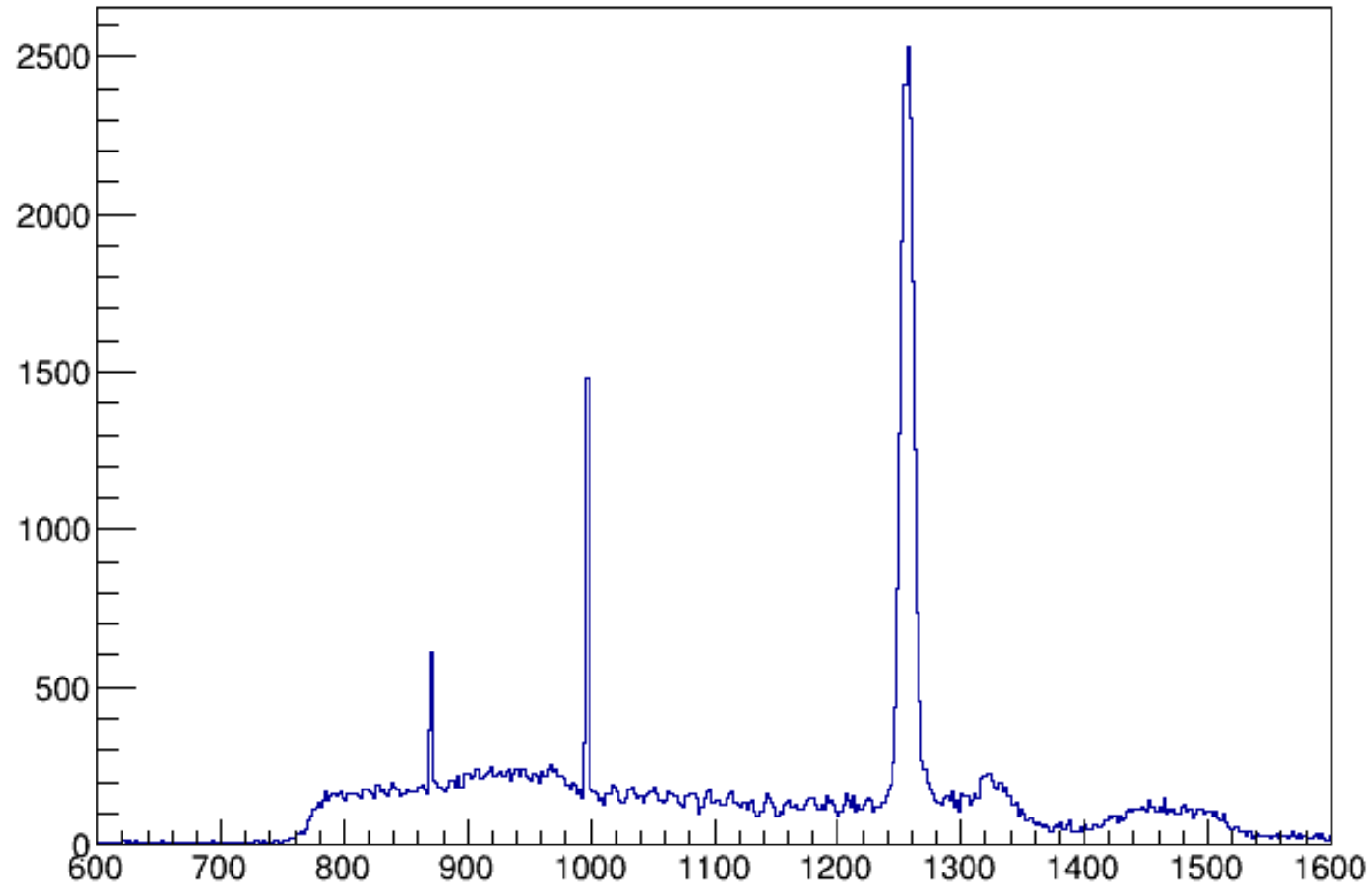


1. Trigger Timing check

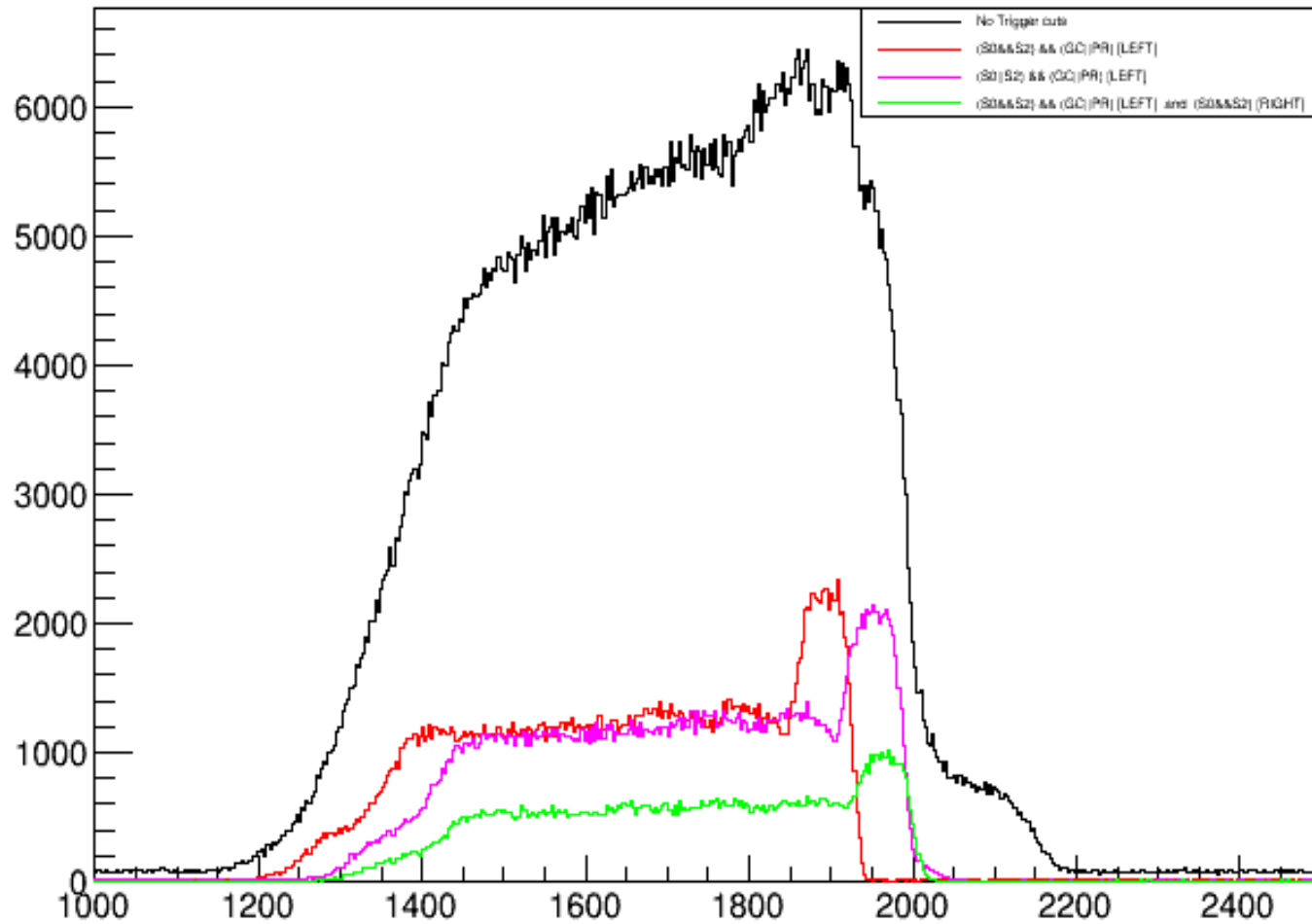
Left arm: Run: 405

(L.s0.lt[0]-R.s0.lt[0]+DR.Retiming_L[0])



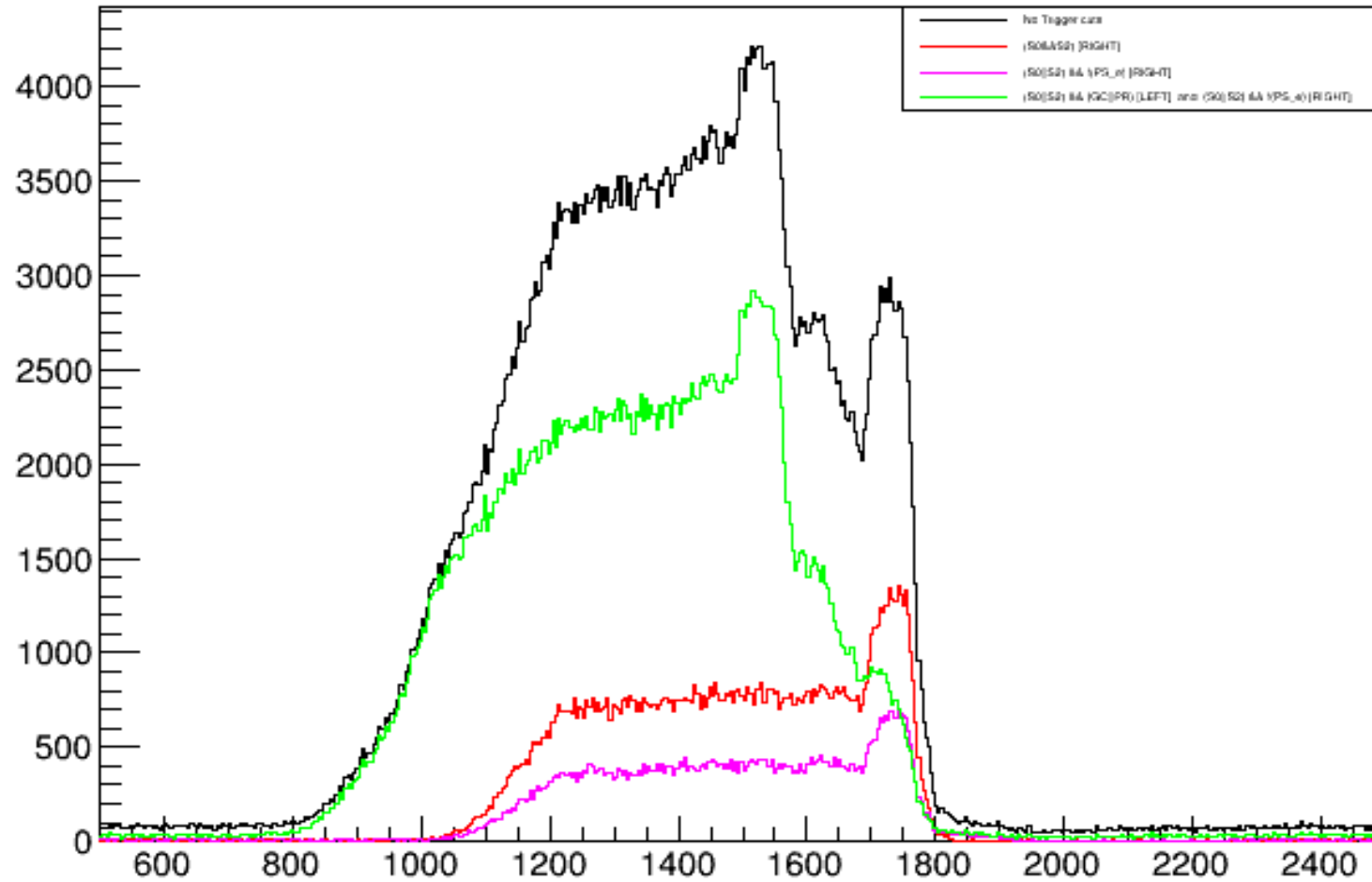
Drift time on the Left with different Trigger cuts and RT cuts

L.vdc.u1.rawtime

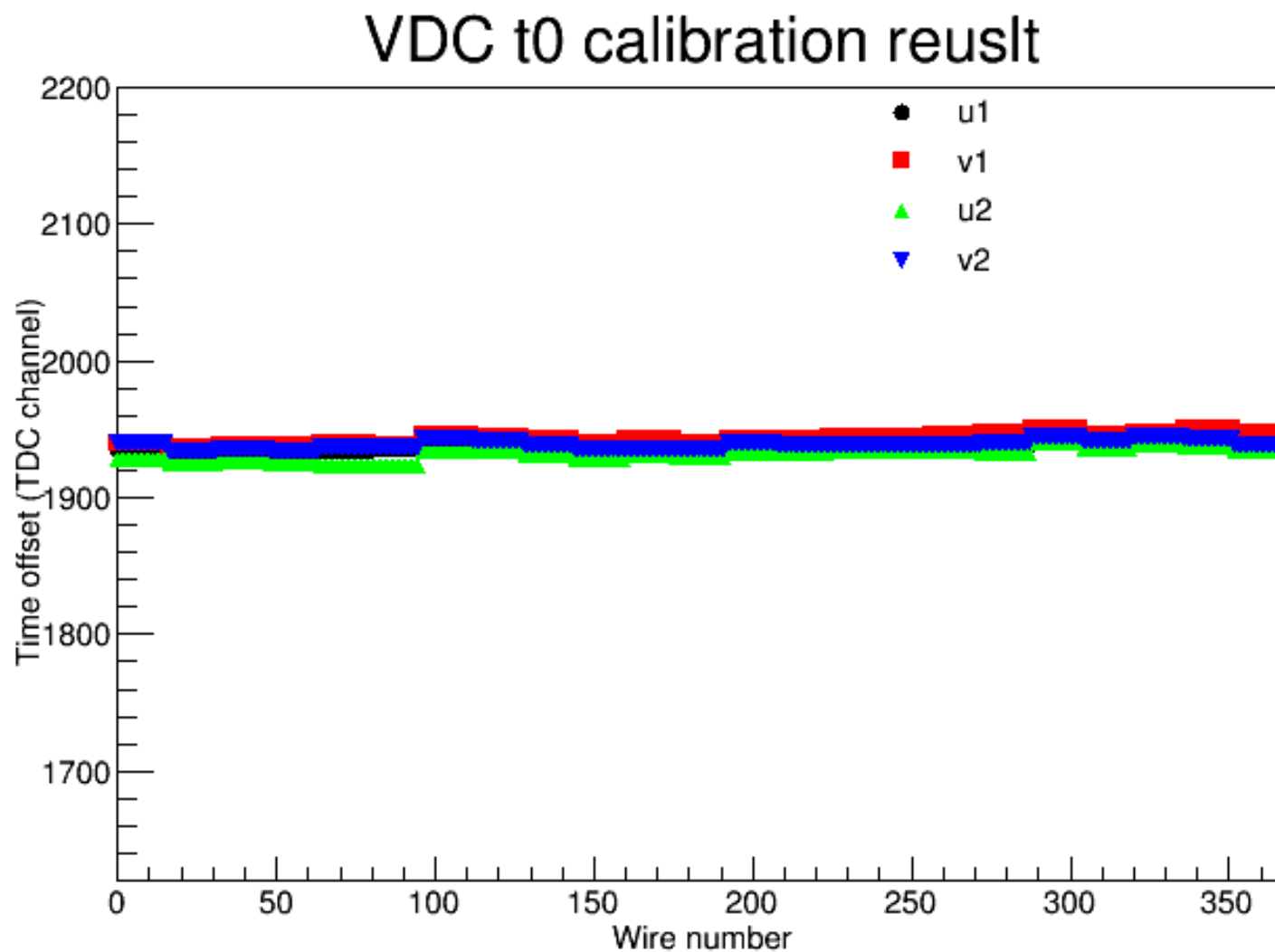


Drift time on the Right with different trigger cuts

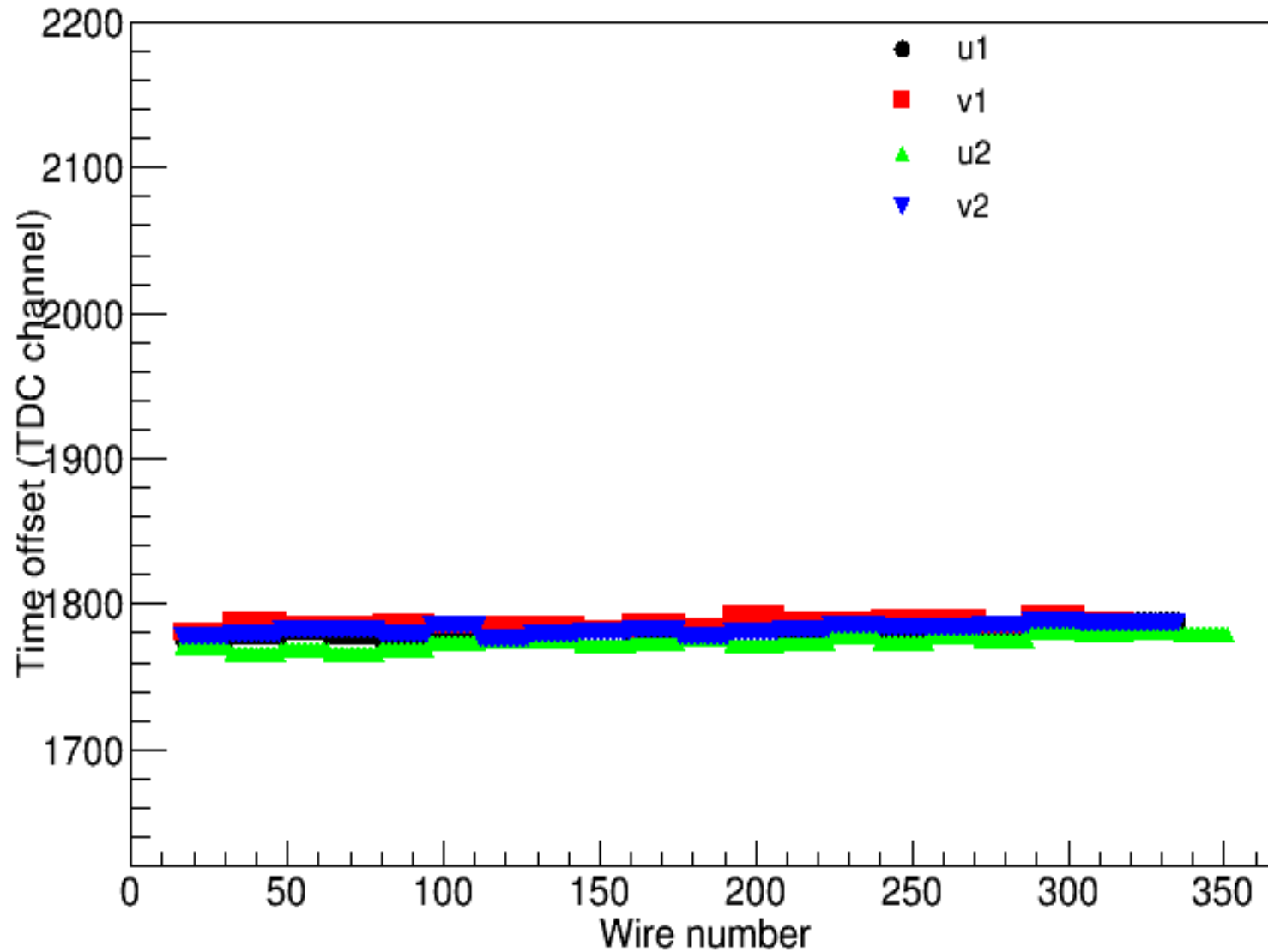
R.vdc.u1.rawtime



VDC T0 calibration using the run 405 on the Left:



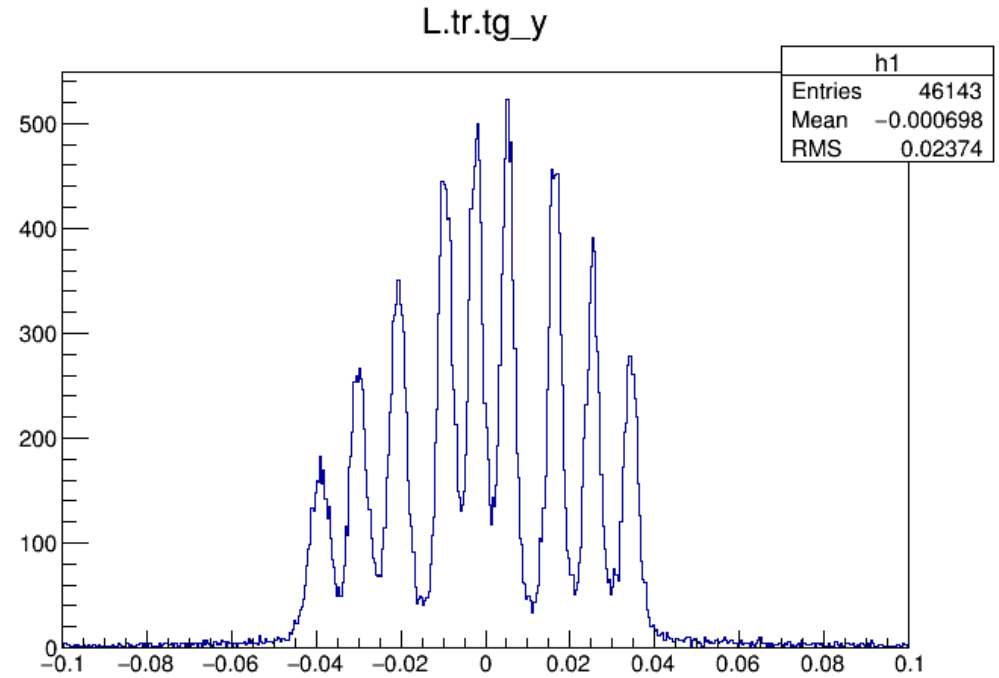
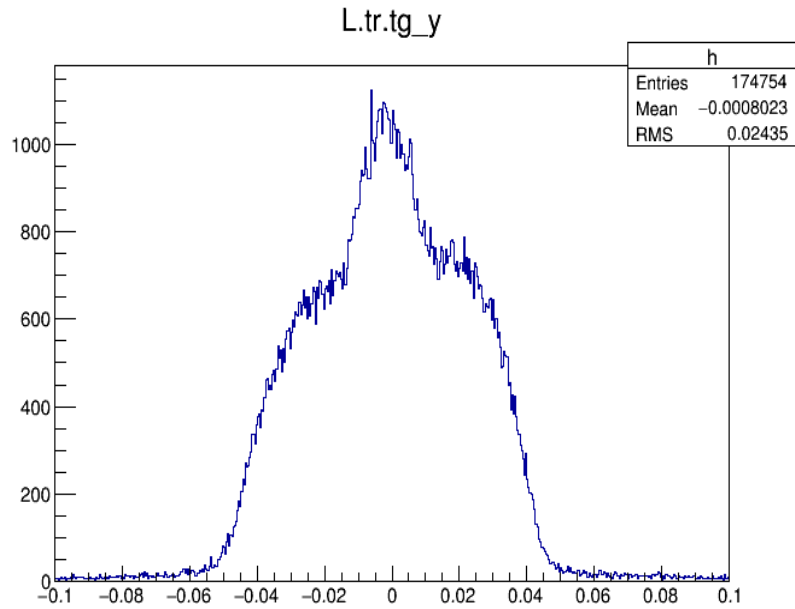
VDC t0 calibration result



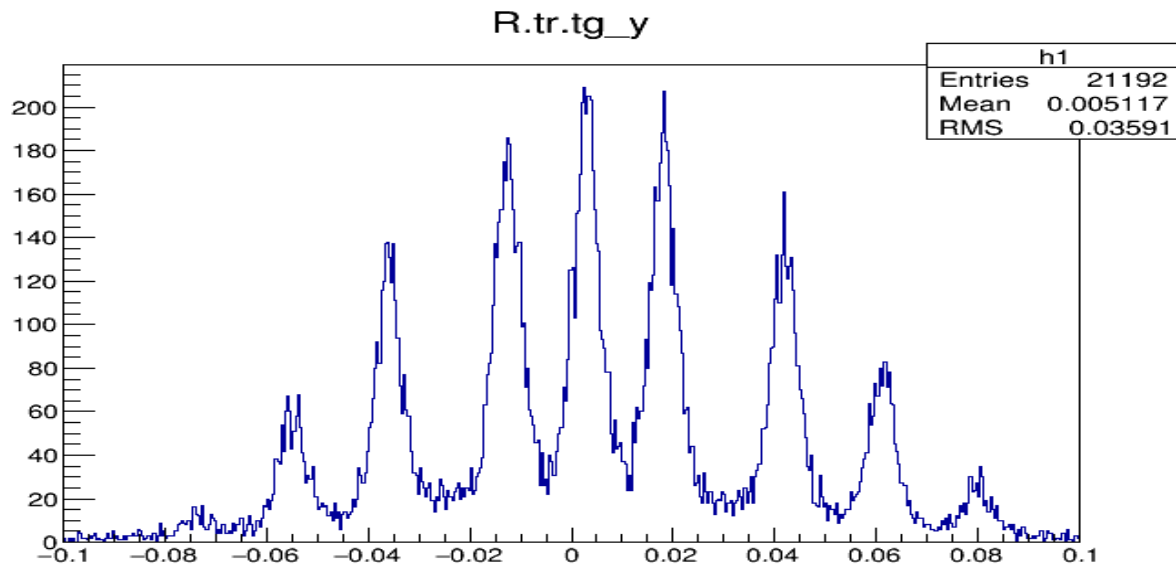
Updated the DB and check the **multiple foils** run: **375**

Angle = 21.5

Left: Before calibration After calibration

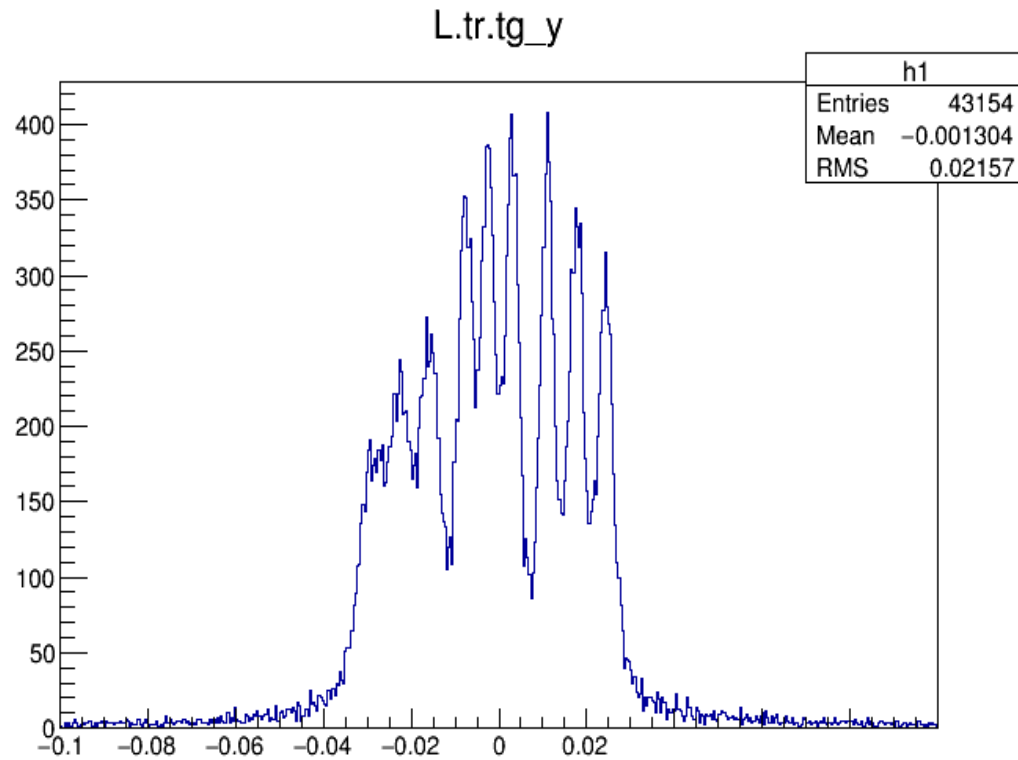


Right



Mutiple Foils run 574.

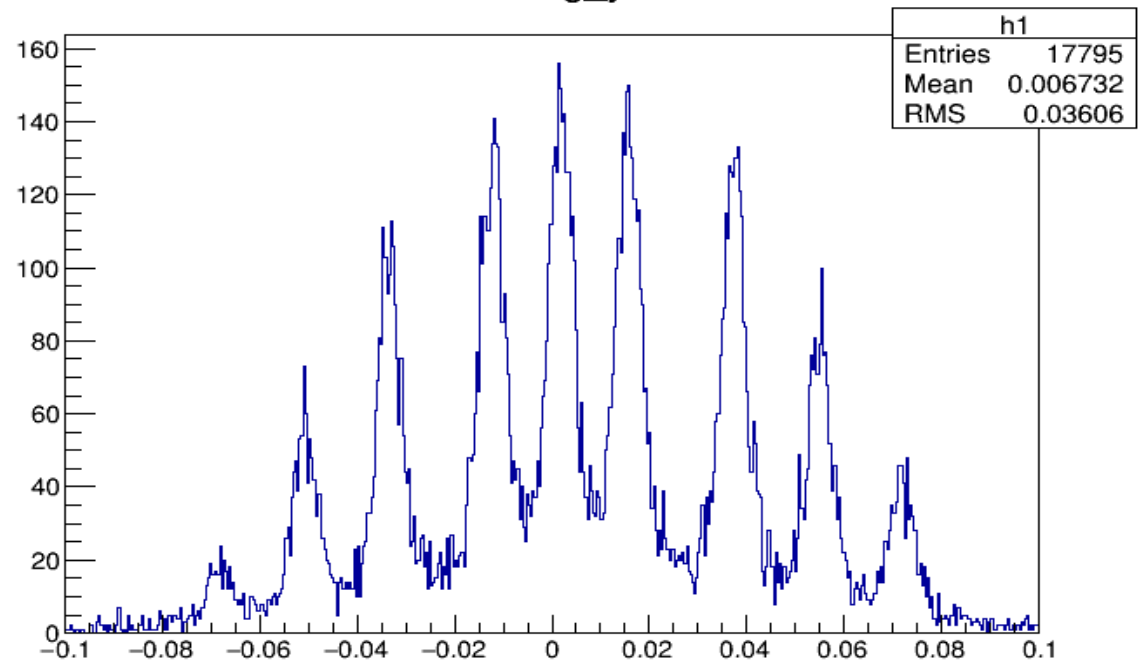
Left:



Angle = 15.53

Right_arm

R.tr.tg_y

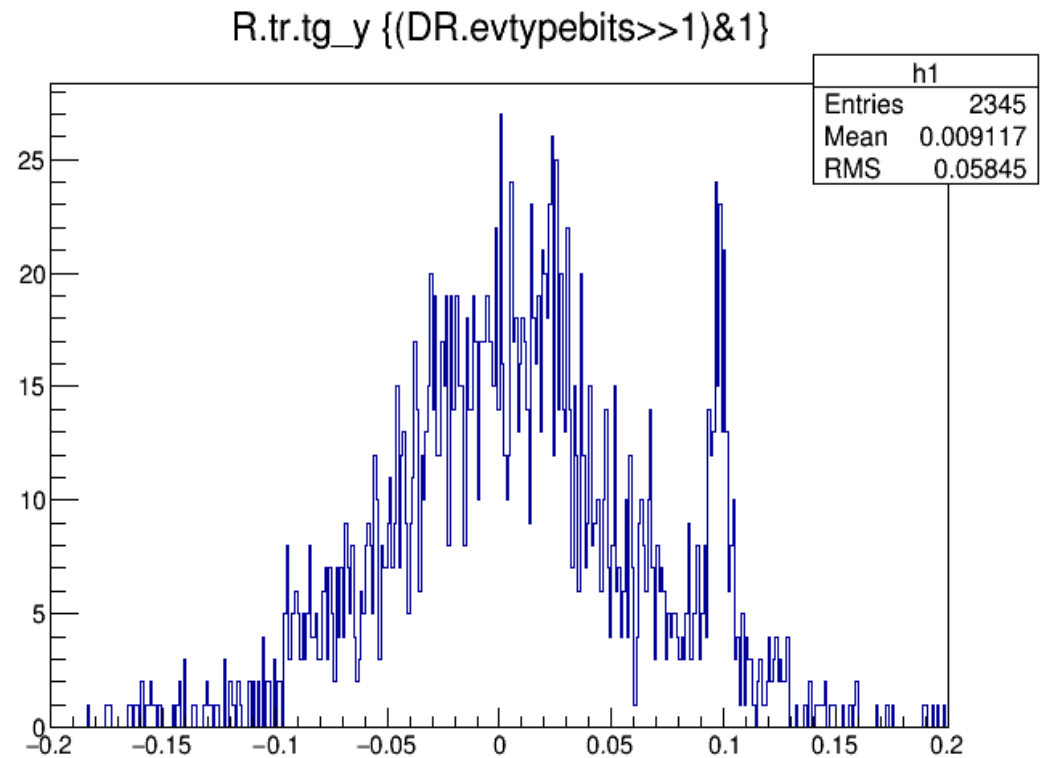
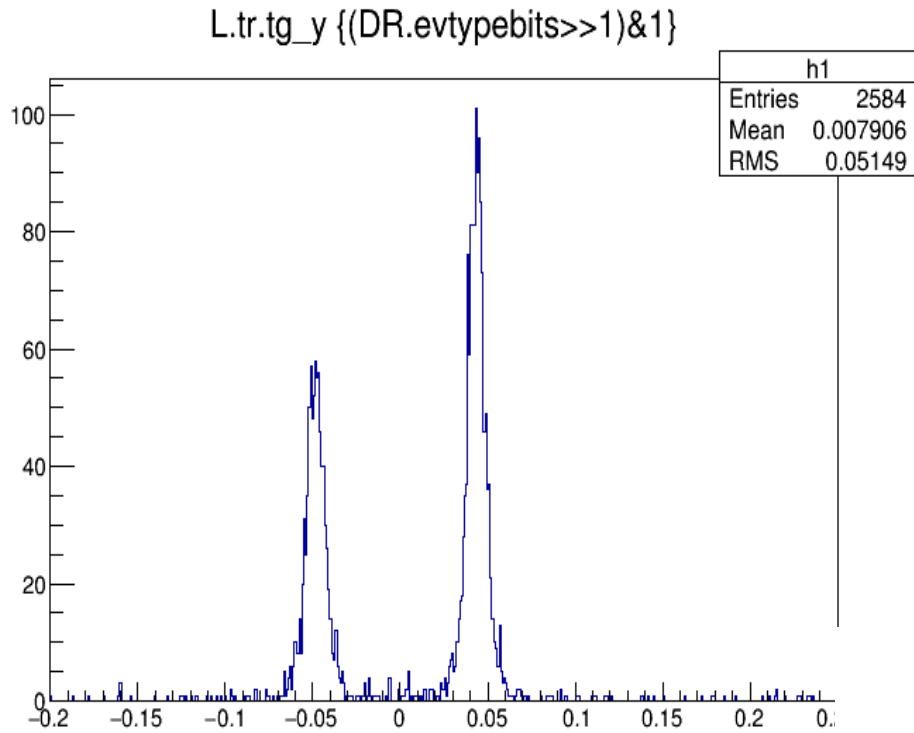


-To calibration on the Left
not very good yet.
need to check the timing
and redo it?

-or just because of small
angle?

Check Dummy Run on left and Right Run 372:

Angle_L = 21.5 , angle_Right = 50



Check the Dummy run: 597:

angle_L= 15.53 , Angle_Right = 44

