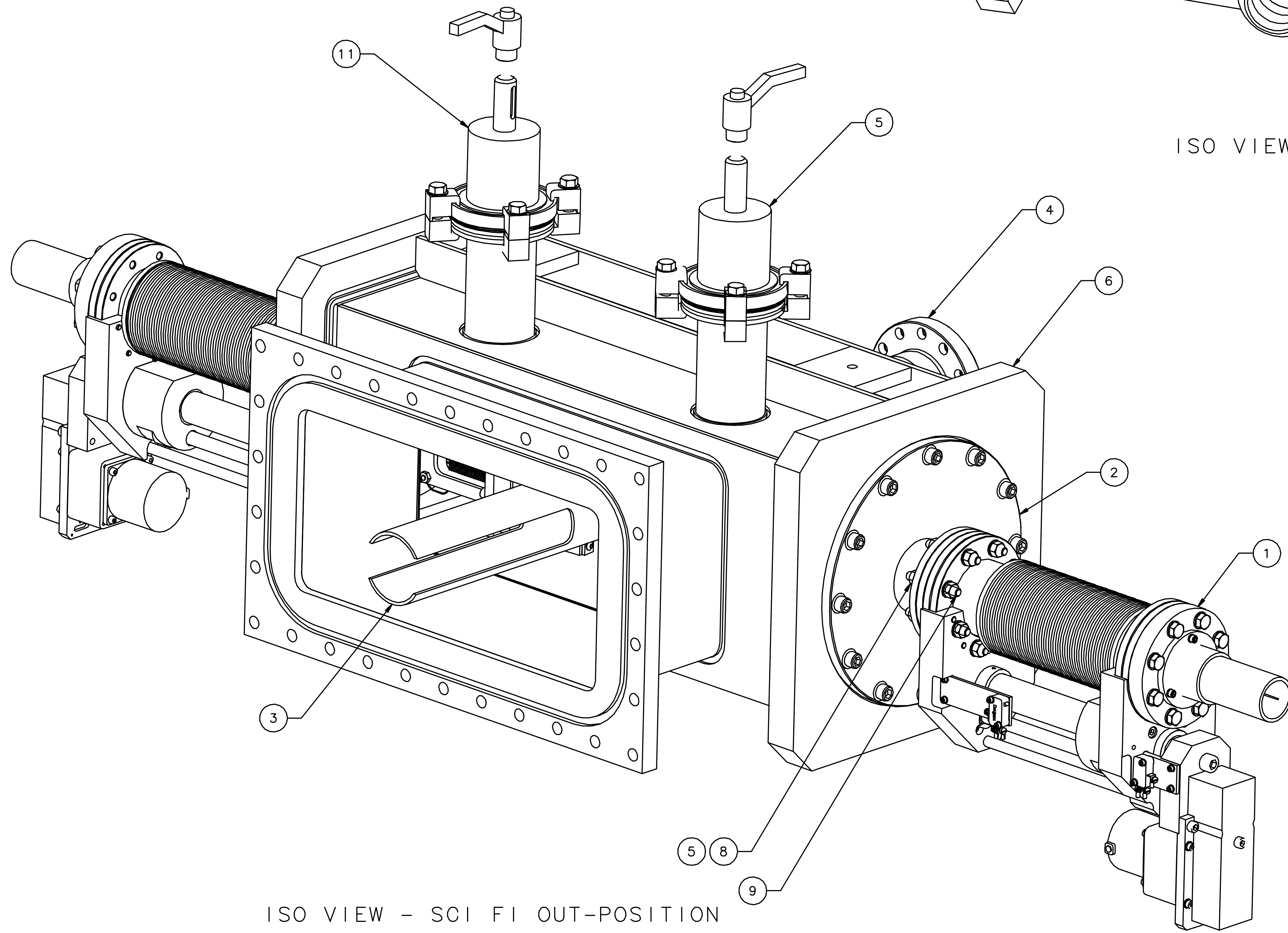


ISO VIEW - SCI FI IN-POSITION
SCALE 1:2



ISO VIEW - SCI FI OUT-POSITION
SCALE 1:2

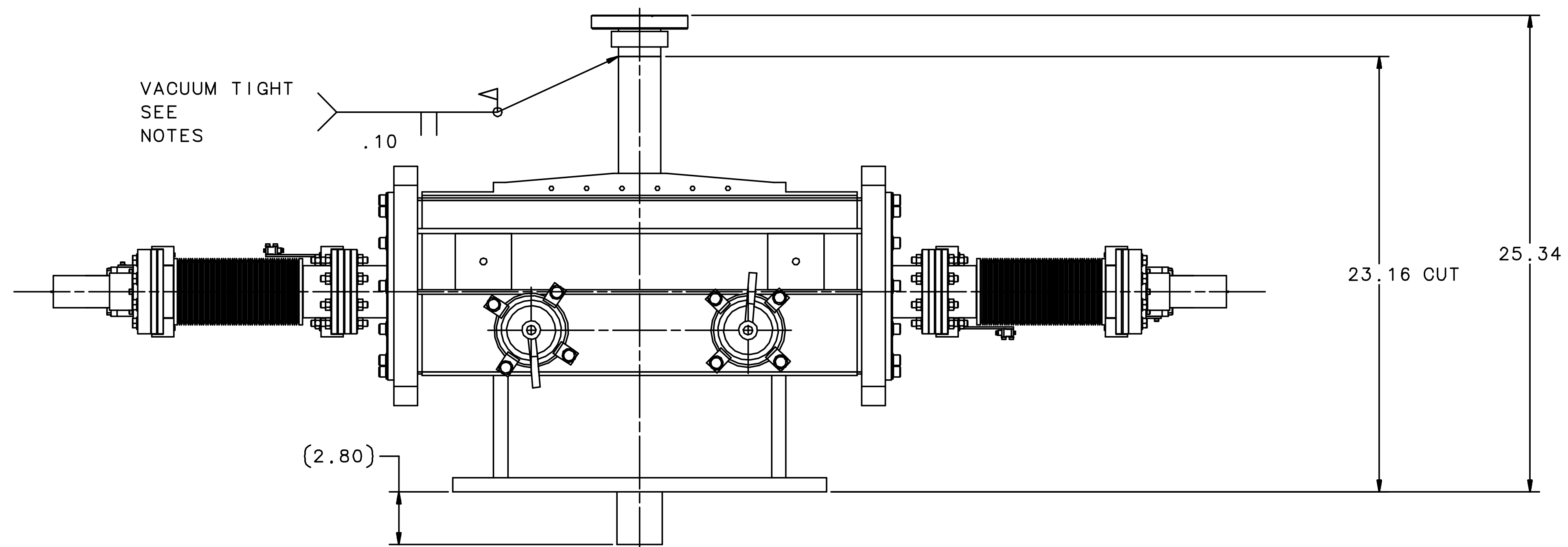
QTY	ITEM NO	PART OR IDENTIFYING NO	NON-FLUORINE OR DESCRIPTION	MATERIAL SPECIFICATION	NOTES
1	11	A10009-03-00-0600	SIEVE SLIT 5 ROT INSERT ASSY BR		
8	10	MCMASER-CARR 95412A613	THREADED STUD 5/16-24 X 3.000	STAINLESS STEEL 18-8	
8	9	MCMASER-CARR 95412A611	THREADED STUD 5/16-24 X 2.500	STAINLESS STEEL 18-8	
32	8	FASTENAL 70731	HEX NUT 5/16-24 UNF-2B	STAINLESS STEEL 18-8	
34	7	FASTENAL 0144222	FLAT WASHER 5/16 OD .625	STAINLESS STEEL 18-8	
1	6	CH DESIGN INC 141228-00	DWNSTRM EXT BOX MAIN ASSY		
1	5	A10009-03-00-0200	SIEVE SLIT 5 ROT INSERT ASSY BL		
1	4	A10009-03-00-0103	2.25 INCH BELLOWS FLG WLDMT		
1	3	A10009-03-00-0102	CUT TUBE WELDMENT		
2	2	A10009-03-00-0101	SIDE EXIT WELDMENT		
2	1	A10009-01-00-0000	SCI FI APEX		

PARTS LIST		MATERIAL		UNITED STATES DEPARTMENT OF ENERGY	
EACH SHEET OF MULTI-SHEET DRAWINGS SHALL ALWAYS HAVE THE SAME REVISION LEVEL		SEE PARTS LIST		Jefferson Lab United States Department of Energy James R. Van Dyke National Accelerator Facility	
DIM & TOL PER ASME Y14.5 2009 UNLESS OTHERWISE SPECIFIED TOLERANCES ARE IN INCHES FRACTIONS DECIMAL ANGLES ± 1/8 ± .01 ± 50°		FINISH MACHINED SURFACES UNLESS OTHERWISE NOTED DEBURR & BREAK ALL SHARP EDGES		HALL A - A10009 - APEX TARGET INSTALLATION DWNSTR EXT APEX	
THIRD ANGLE PROJECTION		DO NOT SCALE DRAWING		SIZE DWG NO A10009-03-00-0100	
DRAWN C. SOVA		DATE 24 OCT 18		SCALE 1:1	
				REVISION HISTORY	

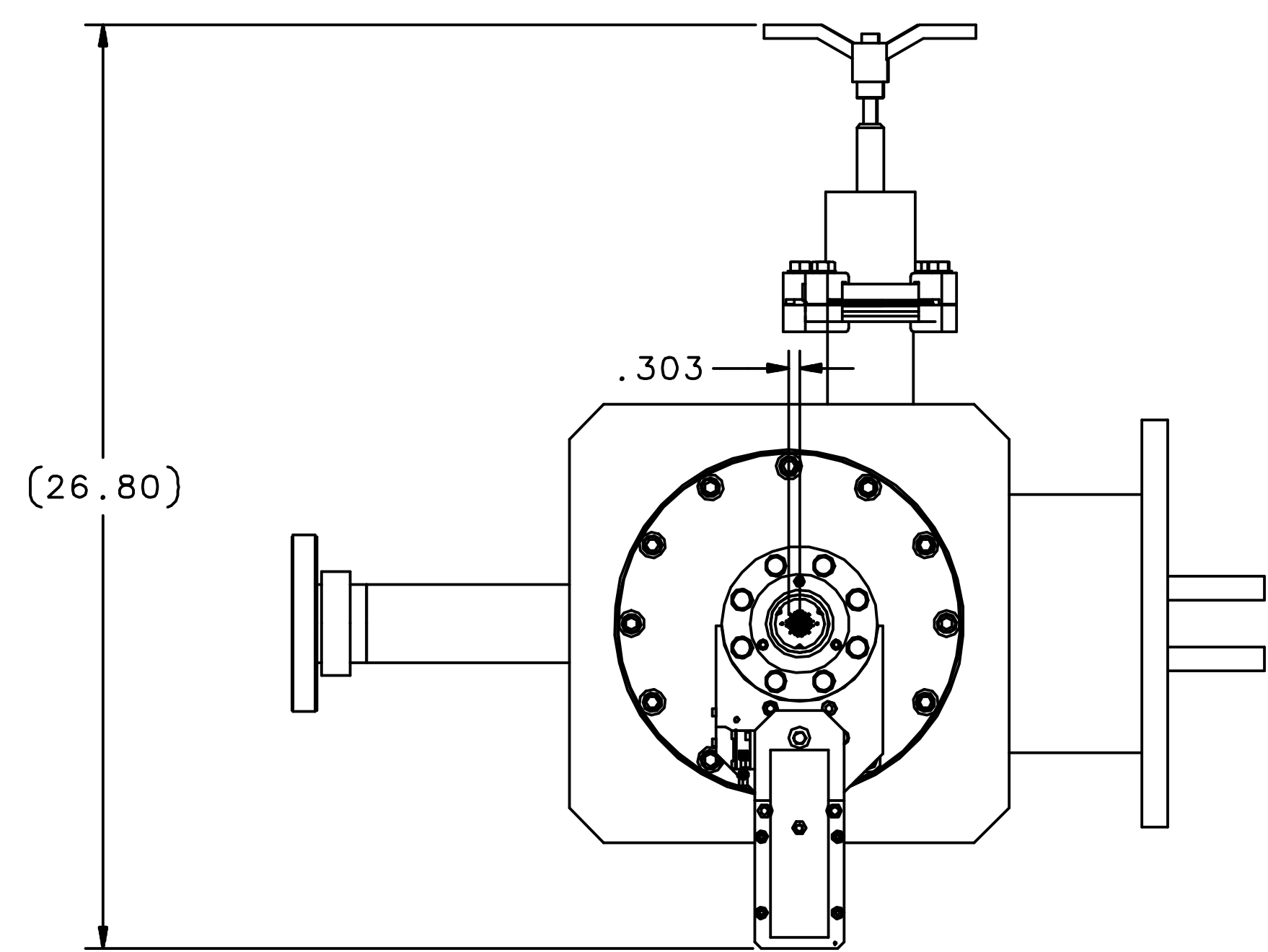
NOTES:

1. WEIGHT IS APPROXIMATELY 366.0 LBS.
2. PART TO BE CONDITIONED FOR SAFE HANDLING. REMOVE ALL BURRS AND BREAK SHARP EDGES R.03" MAX UNLESS OTHERWISE SPECIFIED.
3. IN ACCORDANCE WITH THE JEFFERSON LAB ESH&Q MANUAL SUBJECT MATTER EXPERT (SME) SIGNATURES MAY BE REQUIRED.

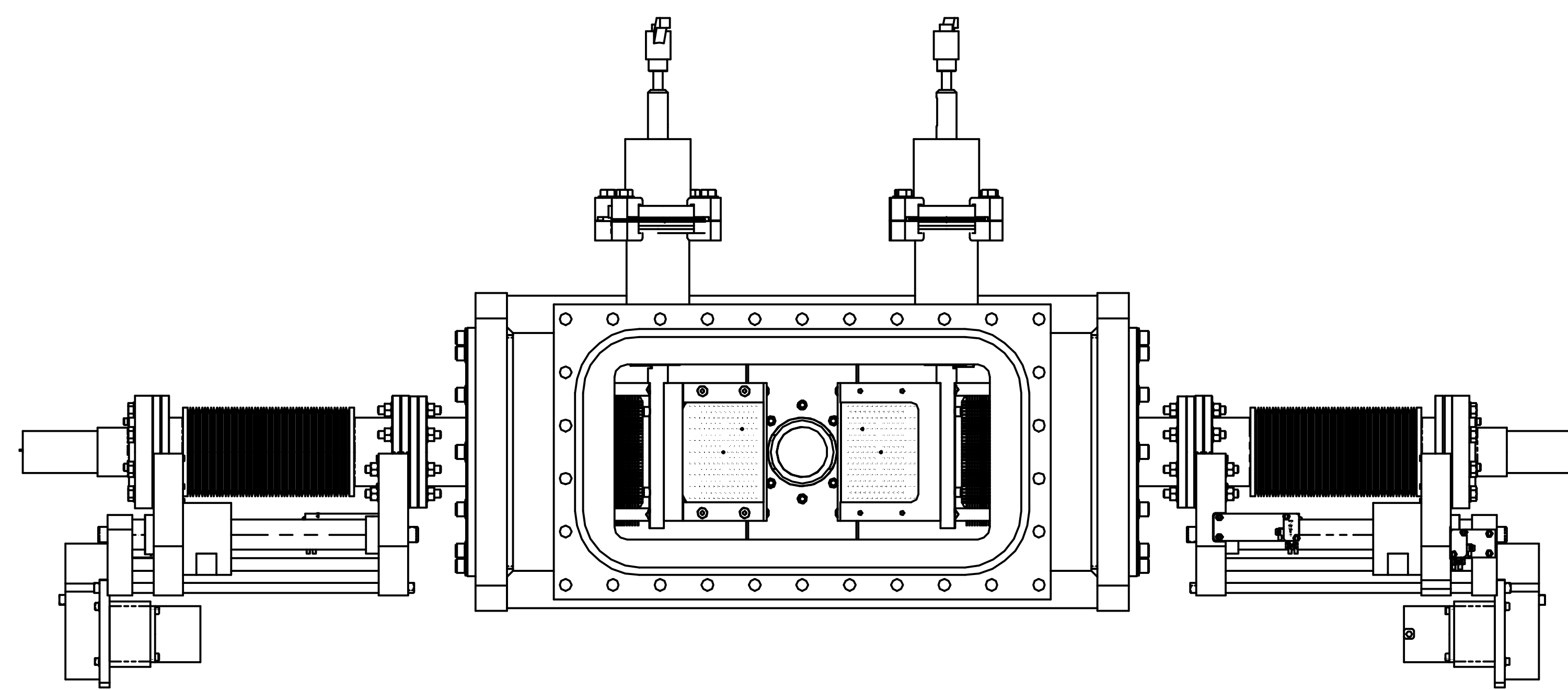
8 7 6 5 4 3 2 1



TOP VIEW 2-5G

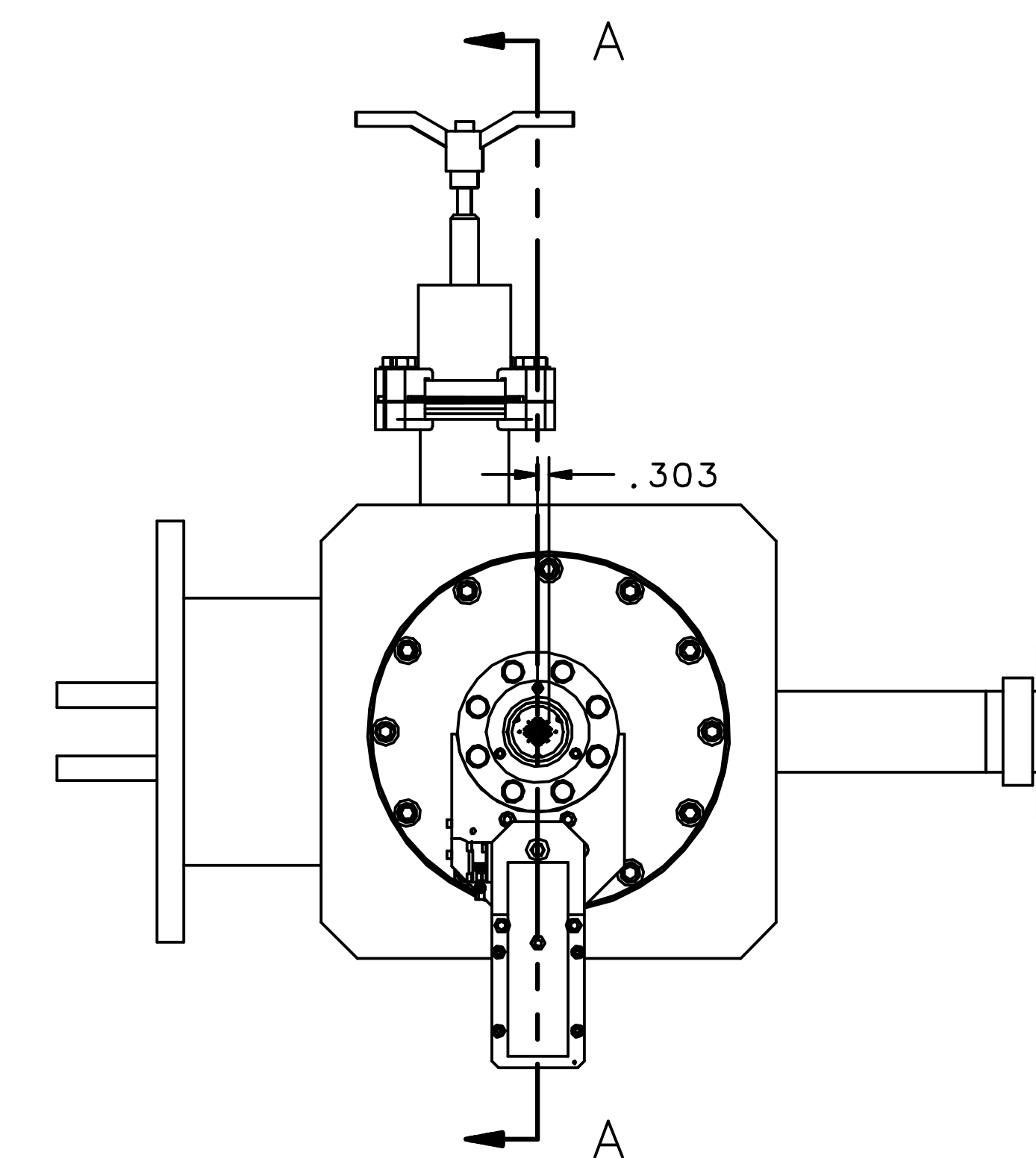


LHS VIEW 2-7E

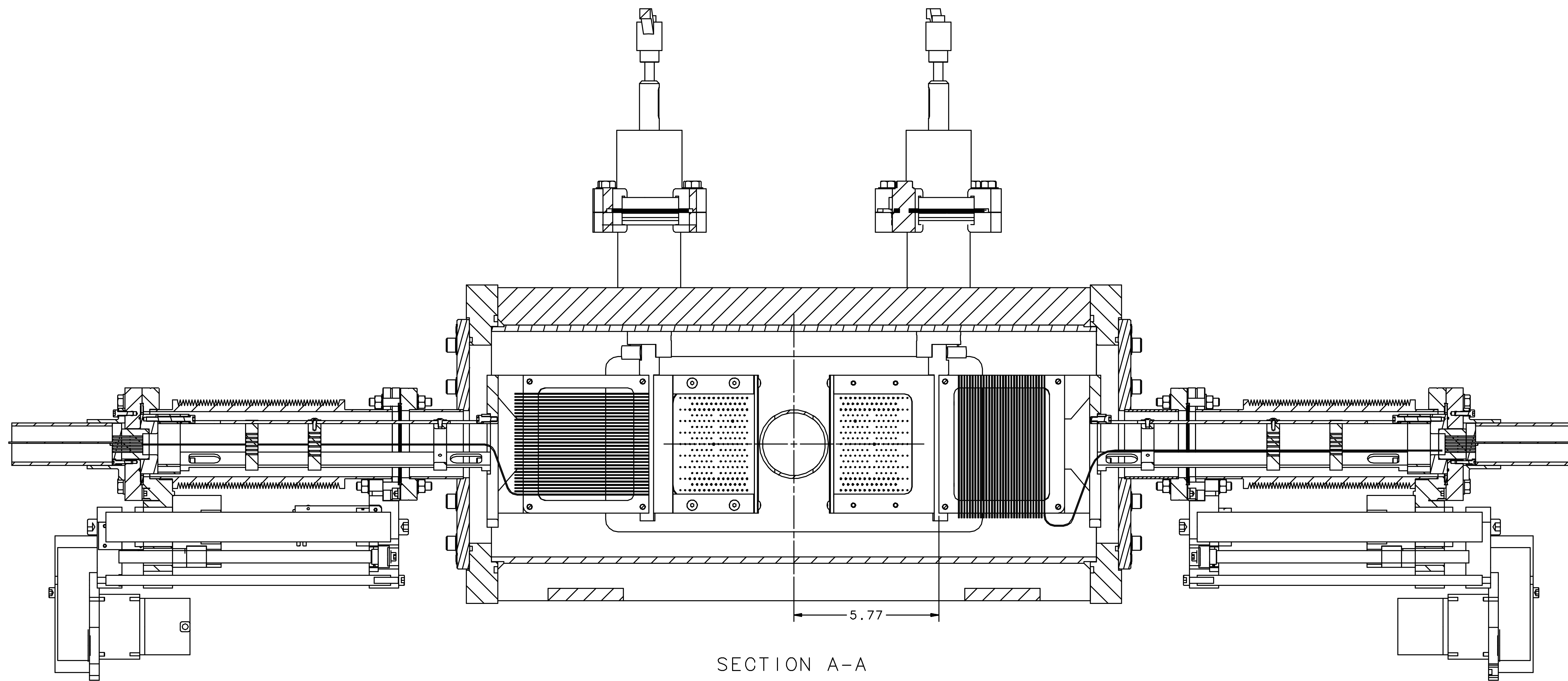


FRONT VIEW 2-5E

SCALE 1:4



RHS VIEW 2-2E



SECTION A-A

SCALE 1:2

SIZE	DWG NO	REV
E	A10009-03-00-0100	-
SCALE	1:1	SHEET 2 OF 3

8 7 6 5 4 3 2 1

