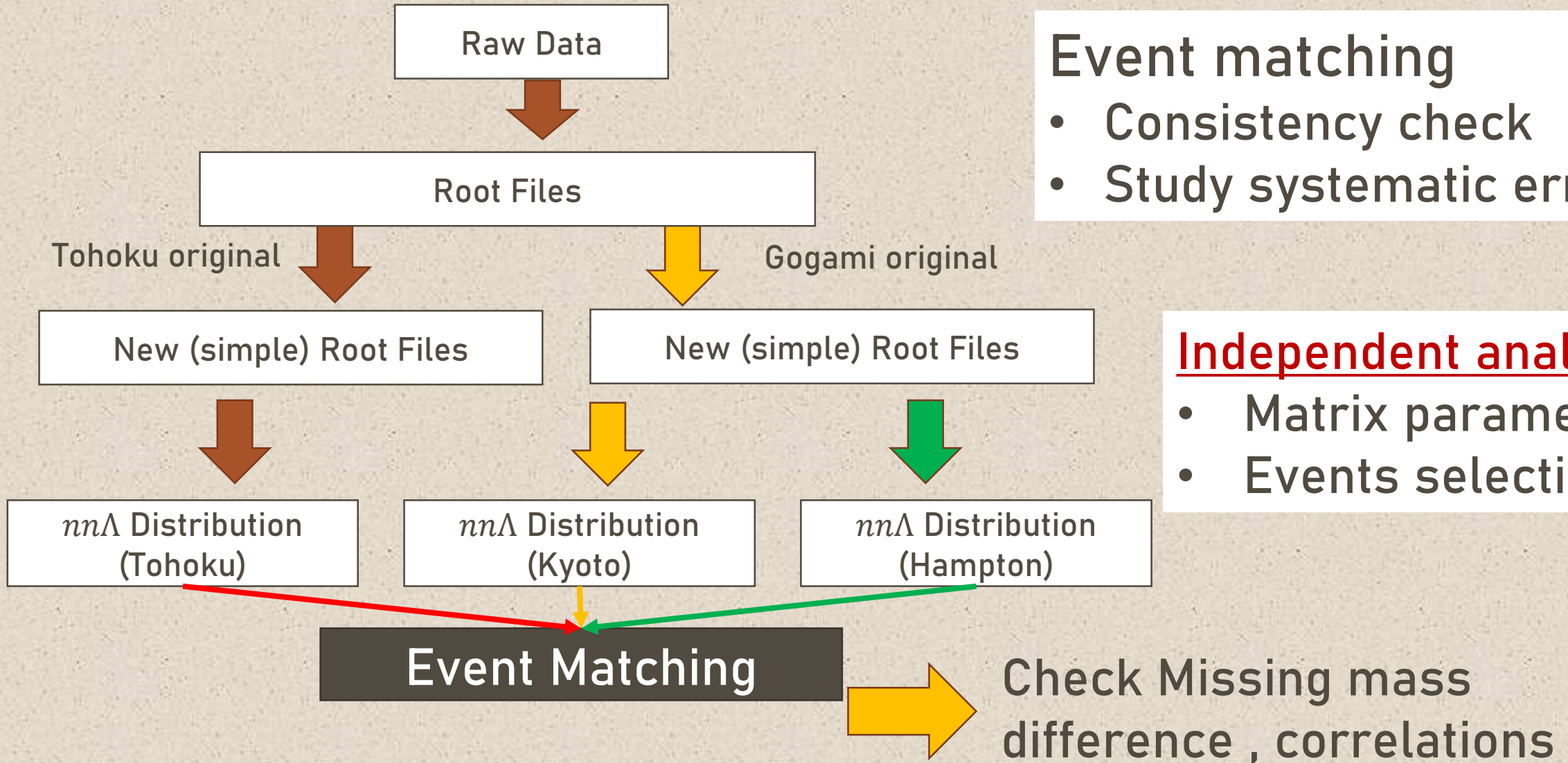


JLab Aanalysis Meeting

K. Itabashi

Event Matching



Event matching

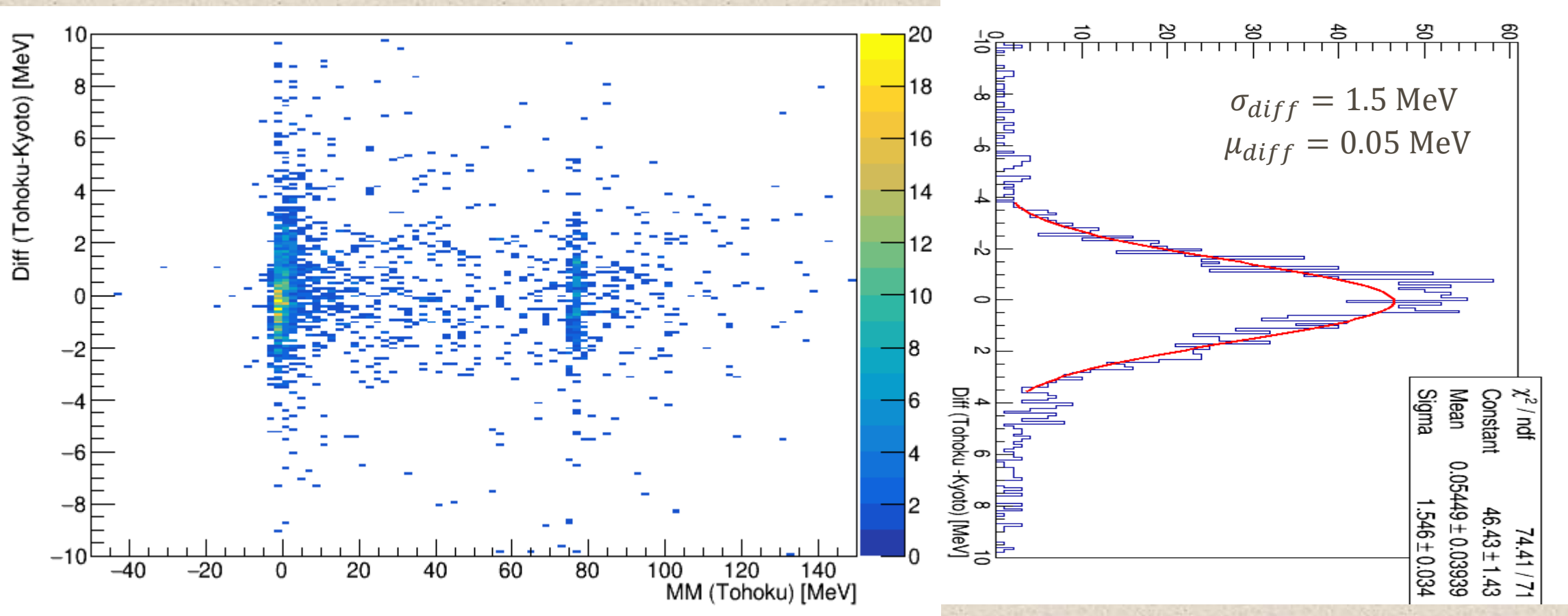
- Consistency check
- Study systematic error

Independent analysis

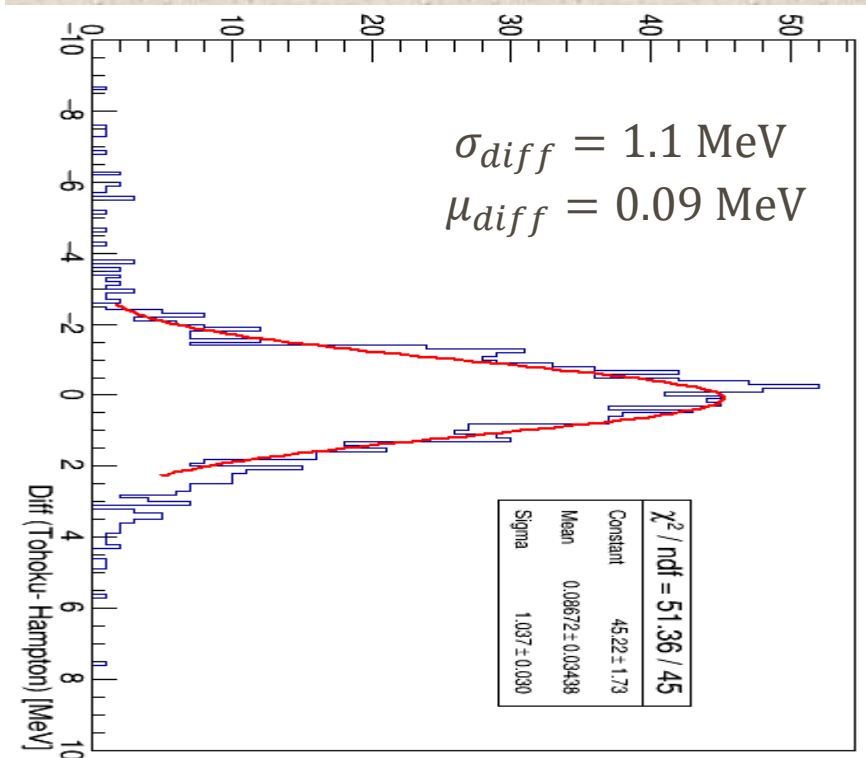
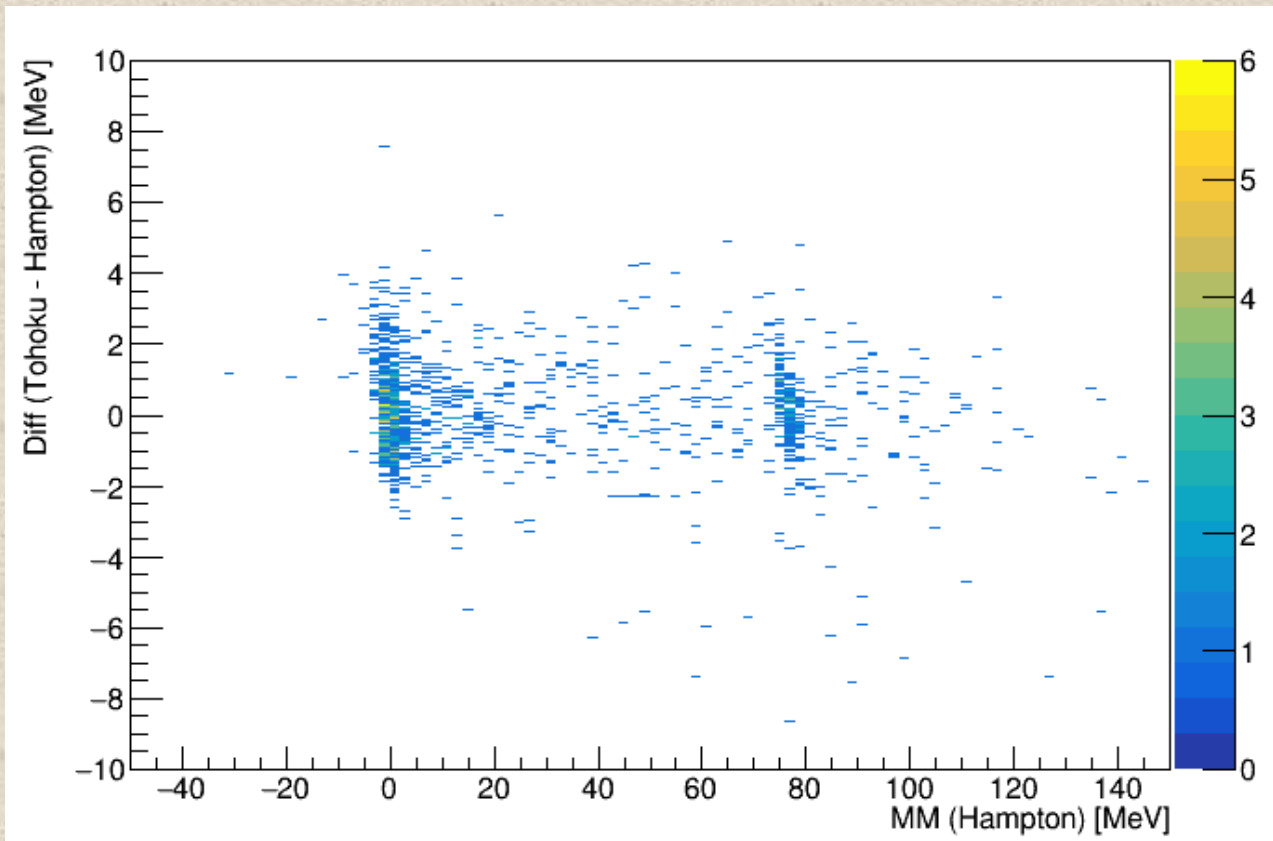
- Matrix parameters
- Events selection

Event Matching (Tohoku and Kyoto with Hydrogen data)

Correlation Tohoku and Kyoto missing masses



Event Matching with Hydrogent data (Tohoku and Hampton)

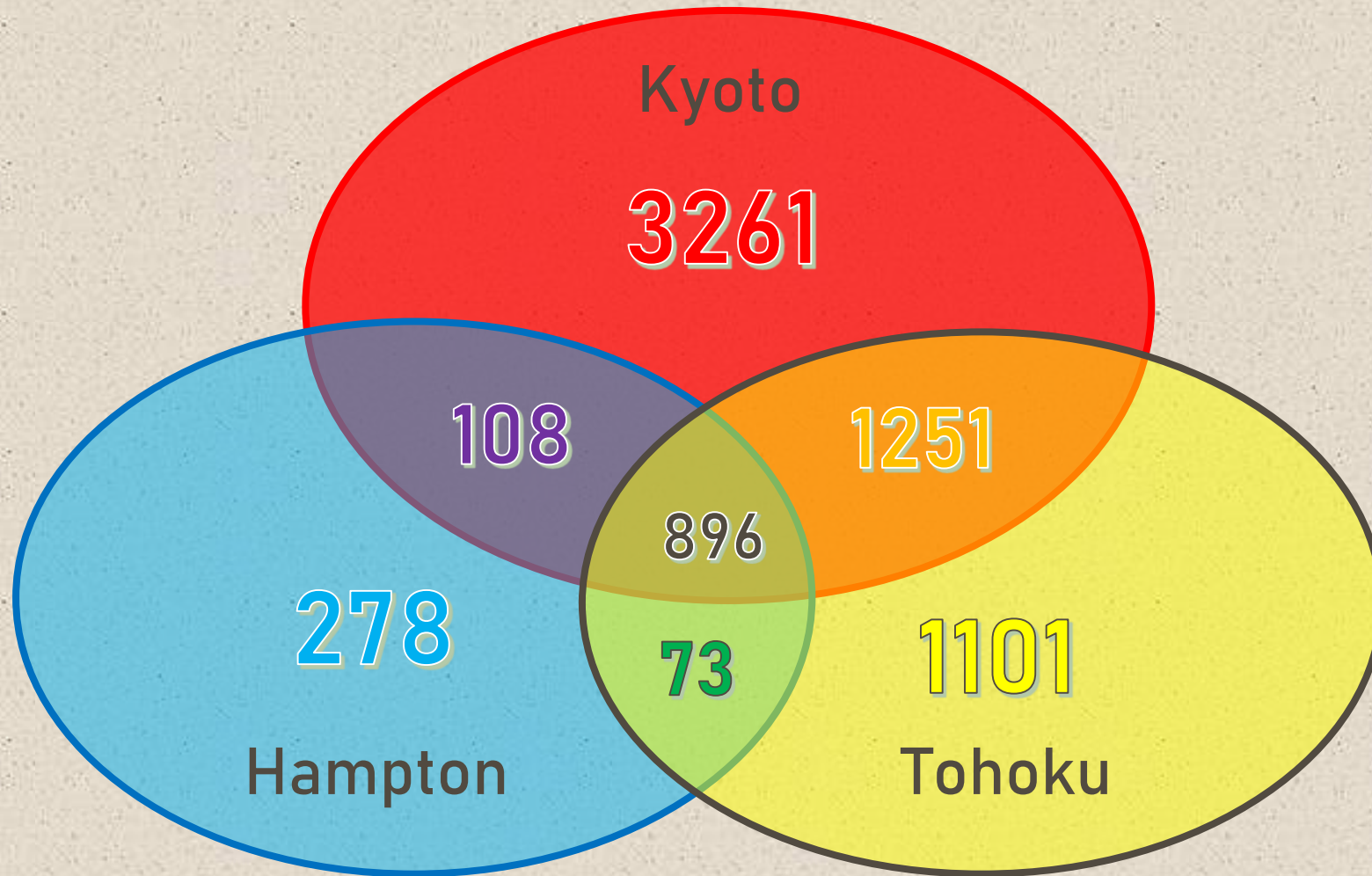


Event Matchng

| MM Diff | Target | σ [MeV] | μ [MeV] |
|------------------|-----------------|----------------|-------------|
| Tohoku- Kyoto | Tritium | 3.17 | -0.61 |
| Tohoku - Hampton | | 4.74 | -0.77 |
| Kyoto -Hampton | | 5.12 | -0.18 |
| Tohoku - Kyoto | Hydrogen | 1.5 | 0.05 |
| Tohoku - Hampton | | 1.1 | 0.12 |
| Kyoto - Hampton | | 1.4 | -0.08 |

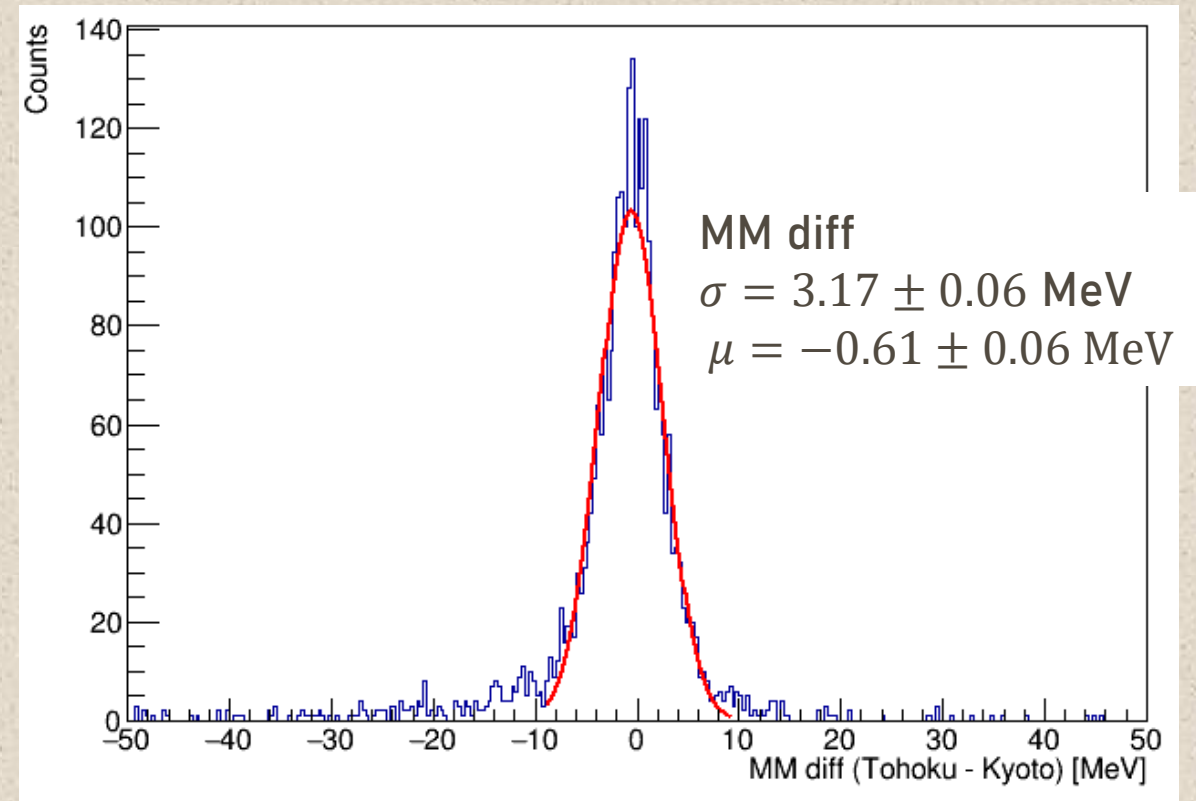
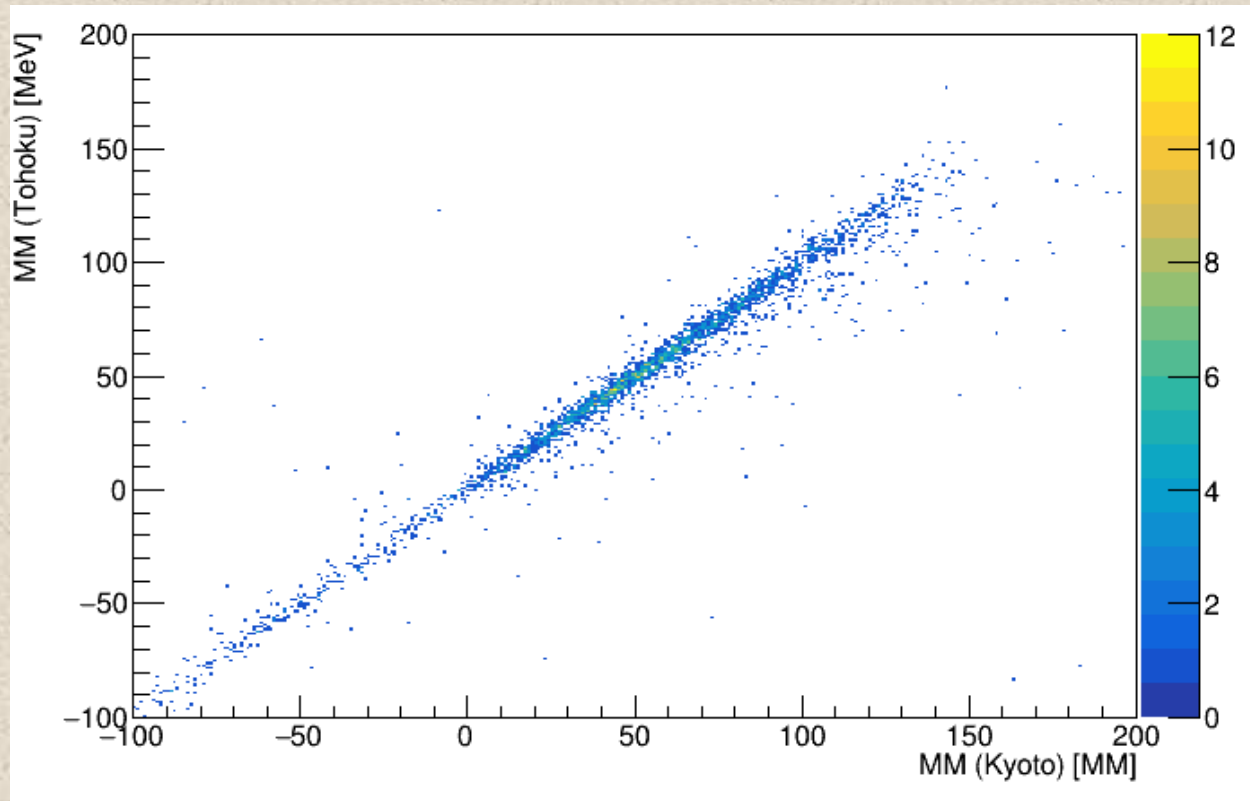
Backup

Event Matching (nnL events)



Event Matching (Tohoku and Kyoto with Tritium run)

Correlation Tohoku and Kyoto missing masses



Event Matching with Tritium data

Event matching Kyoto and Tohoku with nnL data

