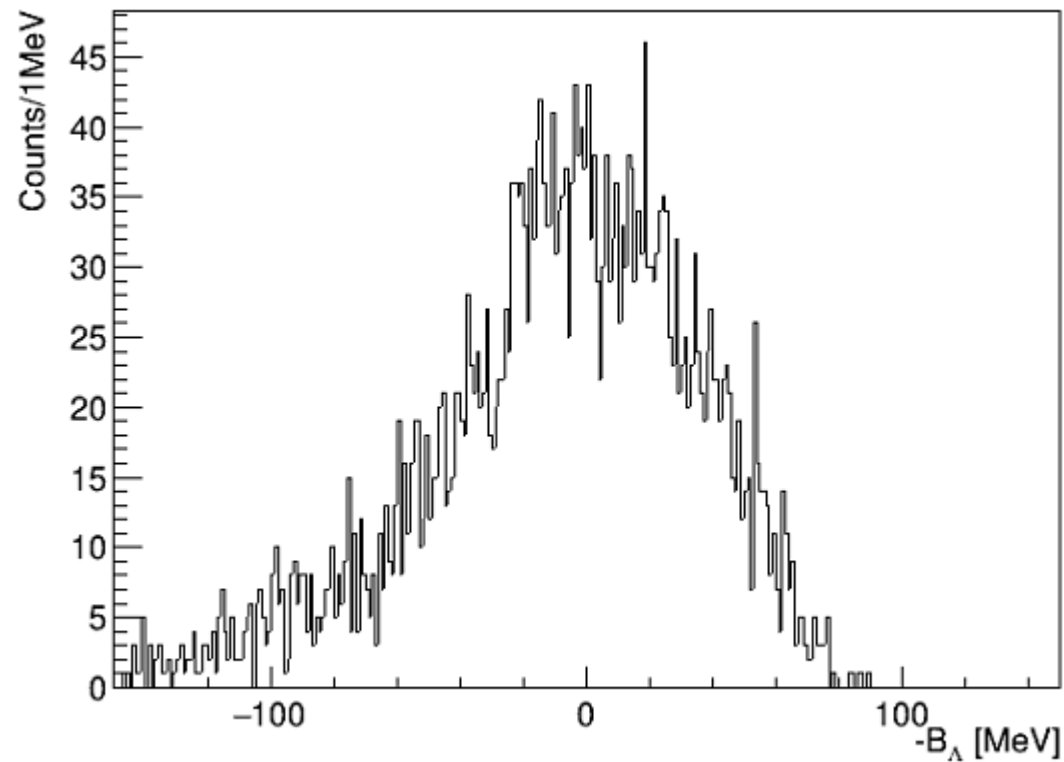
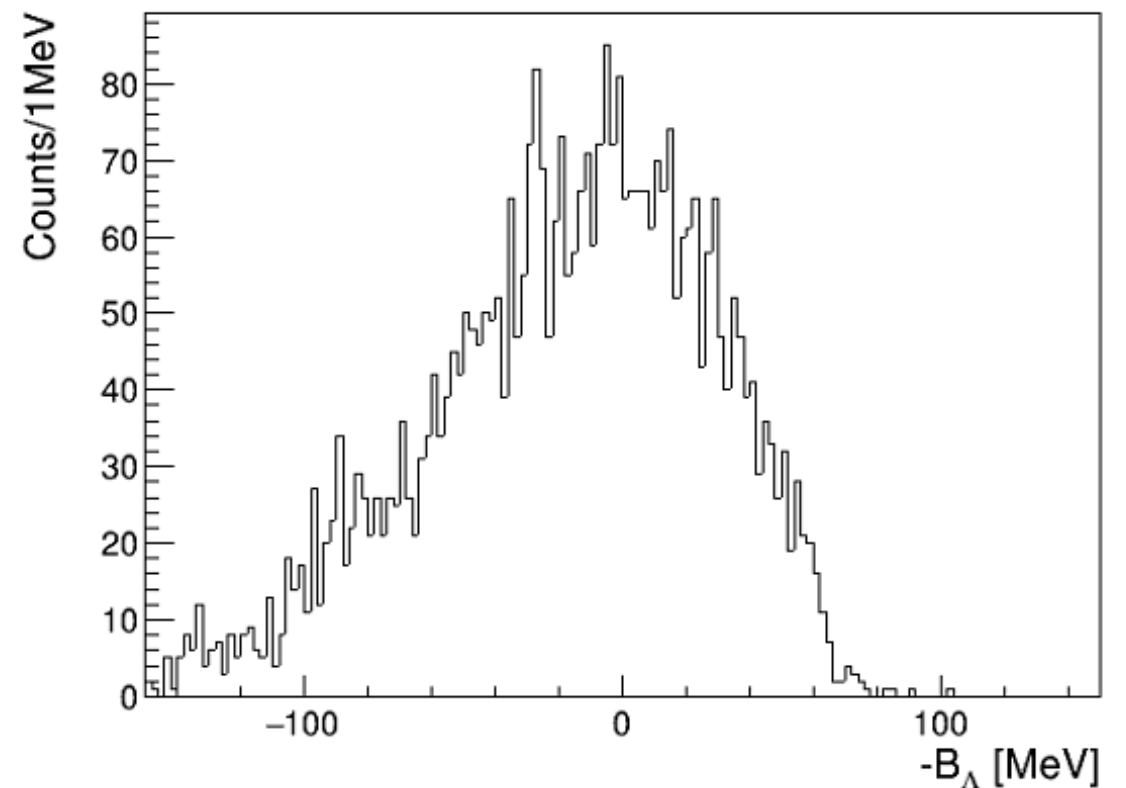


# Tritium data (Lambda calc.) missing mass

$z > 10$  cm  
T data  
 $\Lambda$  missing mass

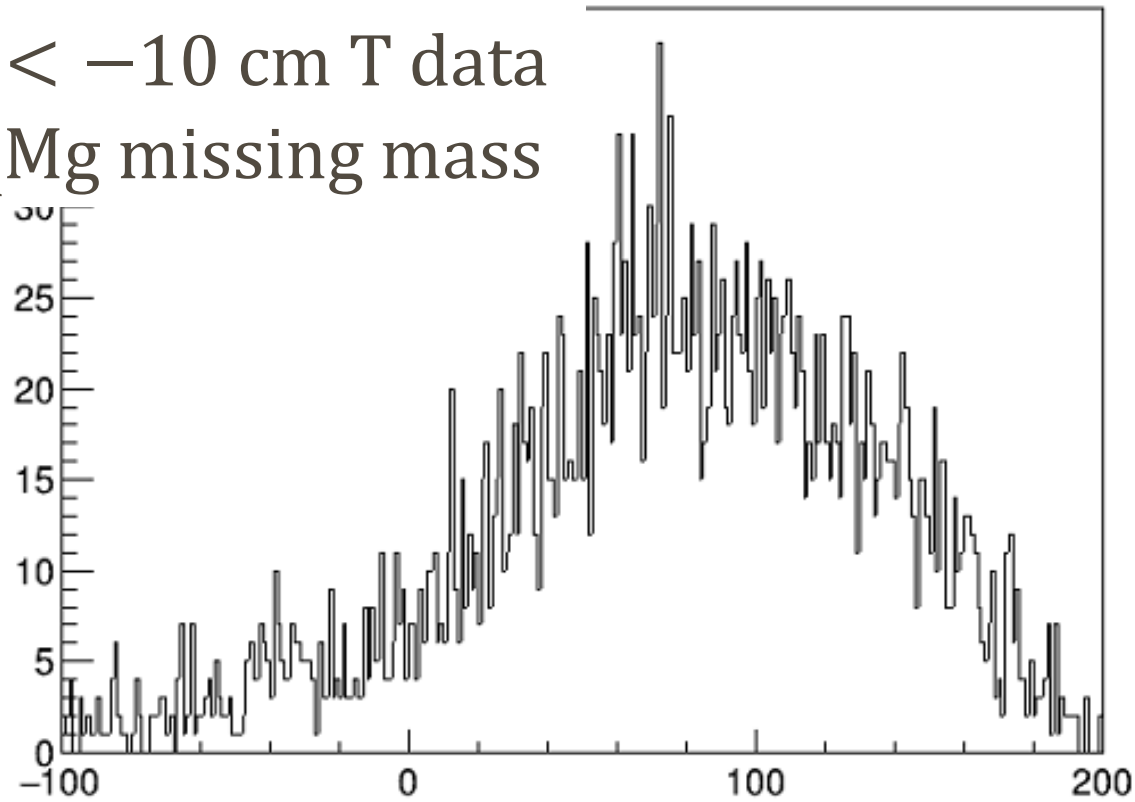


$z < -10$  cm  
T data  
 $\Lambda$  missing mass

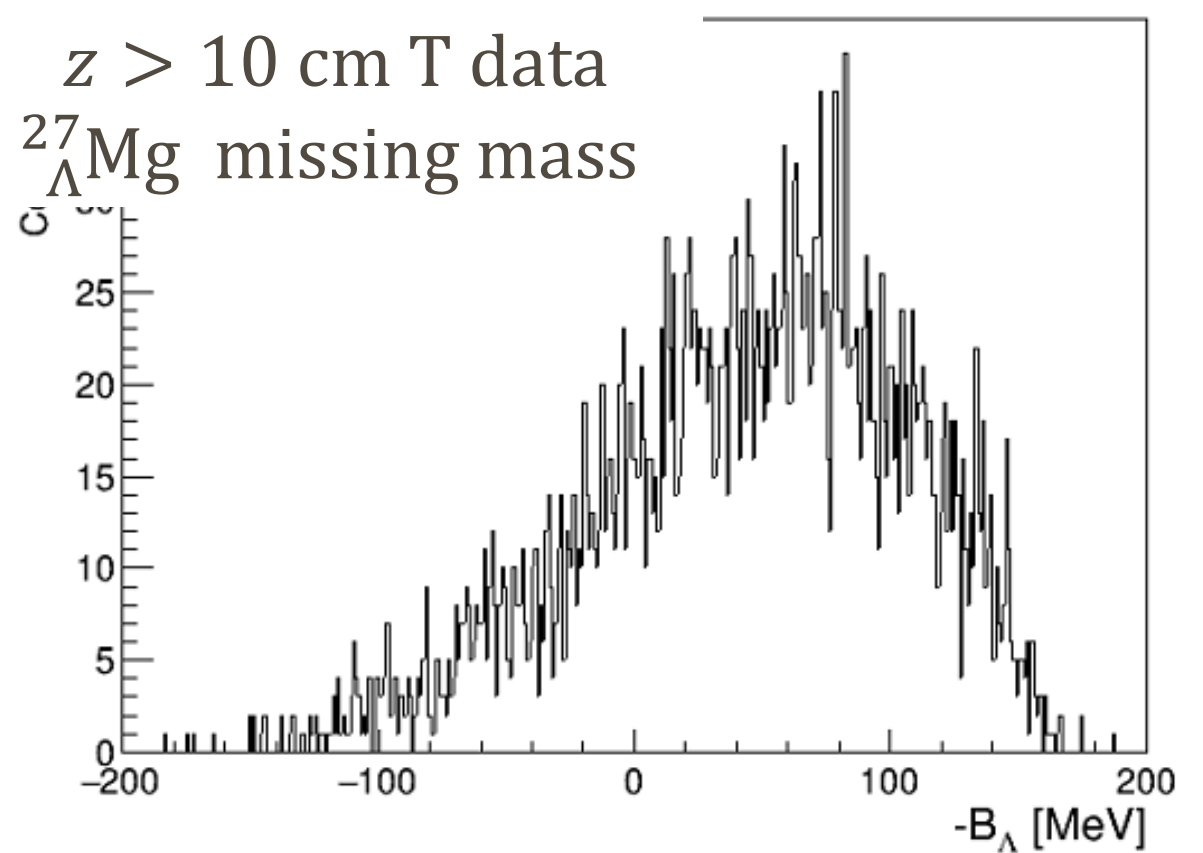


# Tritium data ( $^{27}_{\Lambda}\text{Mg}$ calc.) missing mass

$z < -10$  cm T data  
 $^{27}_{\Lambda}\text{Mg}$  missing mass



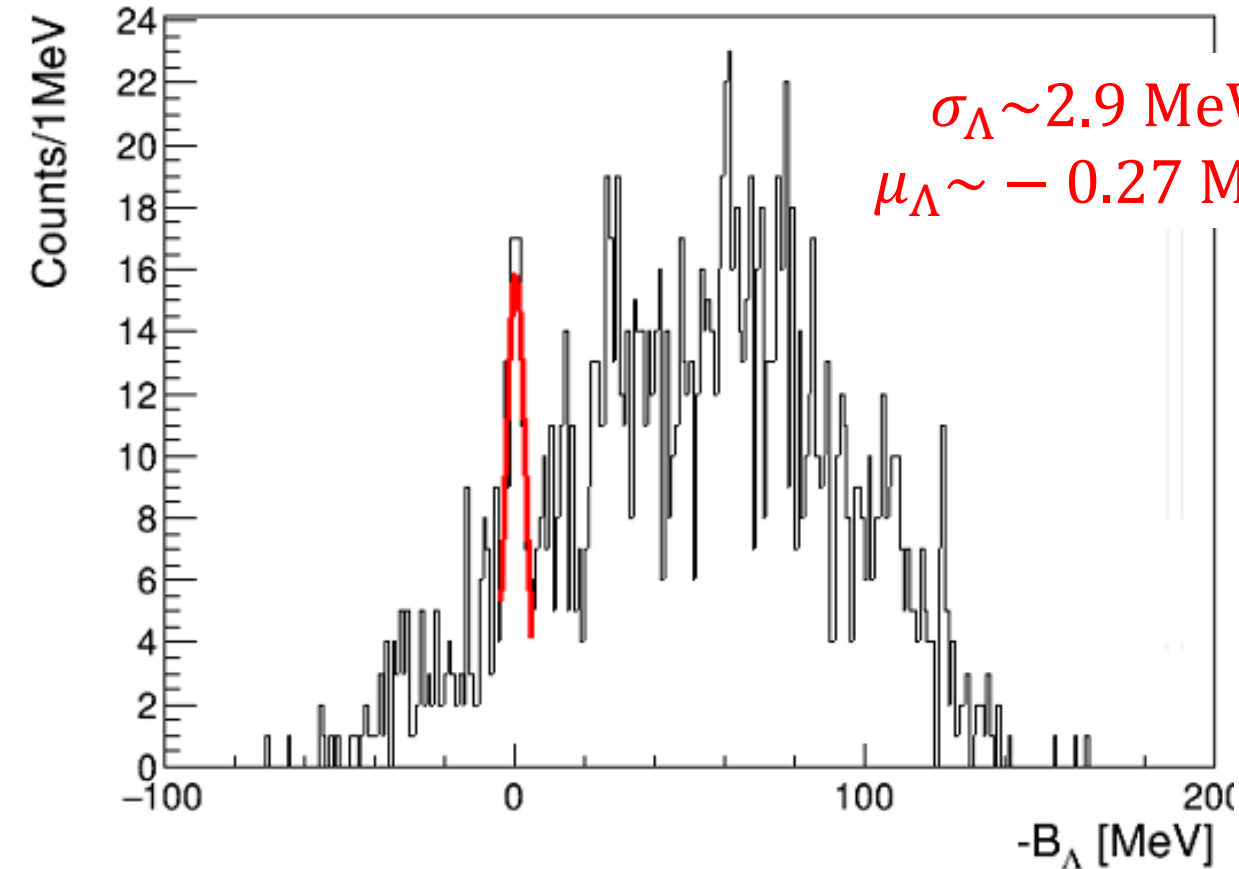
$z > 10$  cm T data  
 $^{27}_{\Lambda}\text{Mg}$  missing mass



# Hydrogen data (Lambda calc.) missing mass

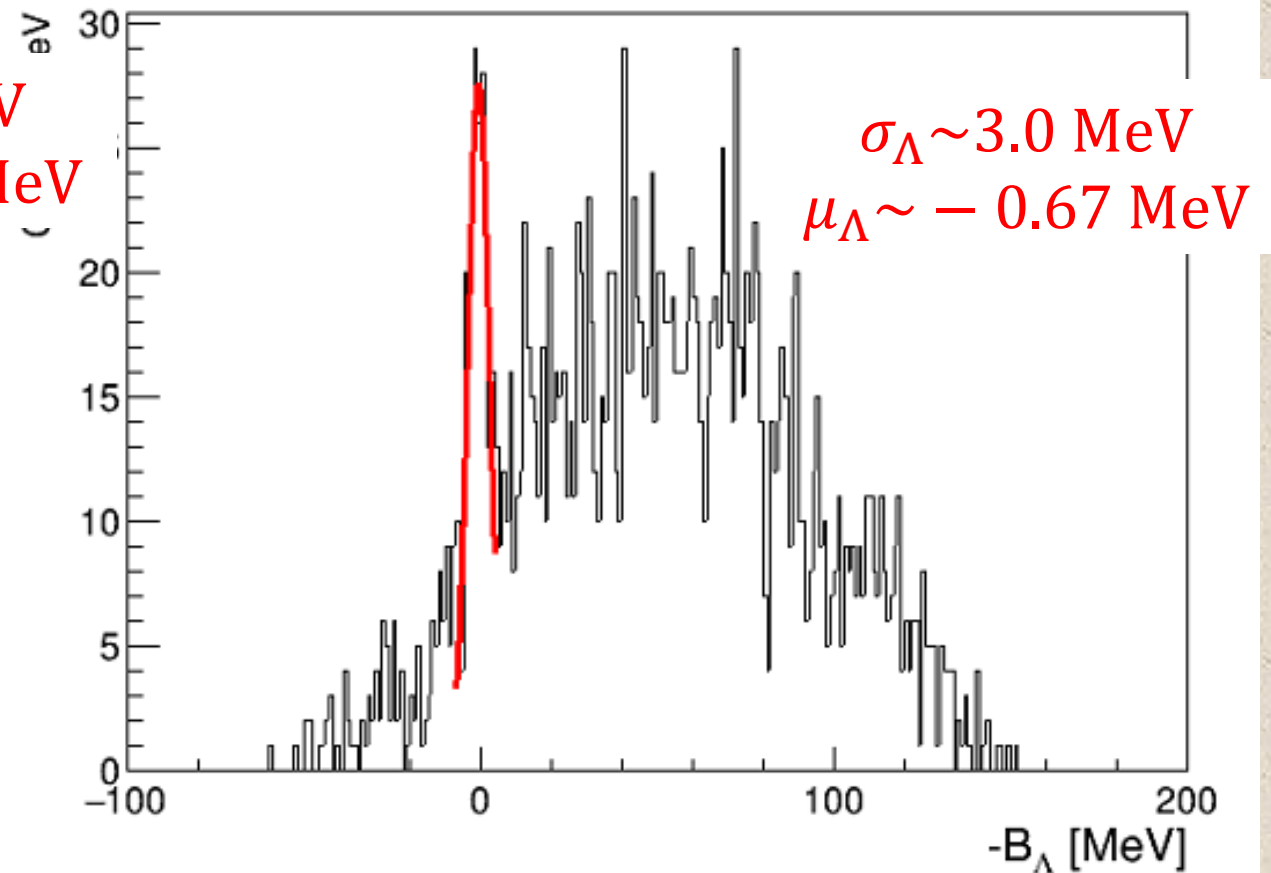
$z > 10$  cm

T data  $\Lambda$  missing mass



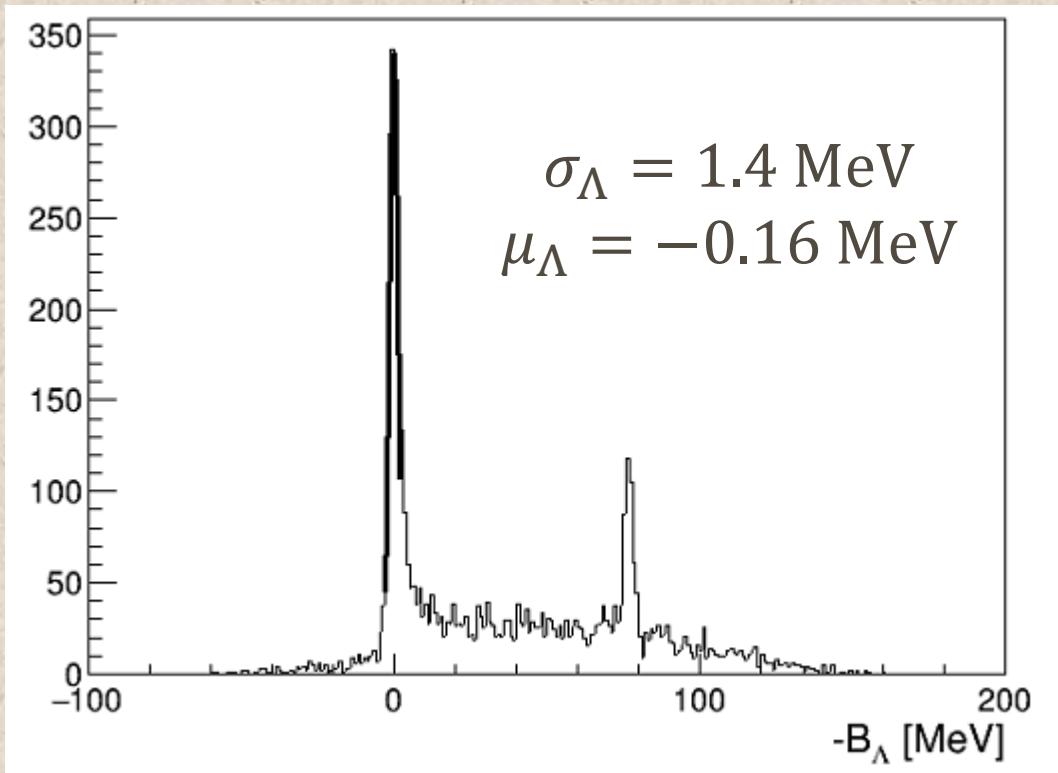
$z < -10$  cm

T data  $\Lambda$  missing mass

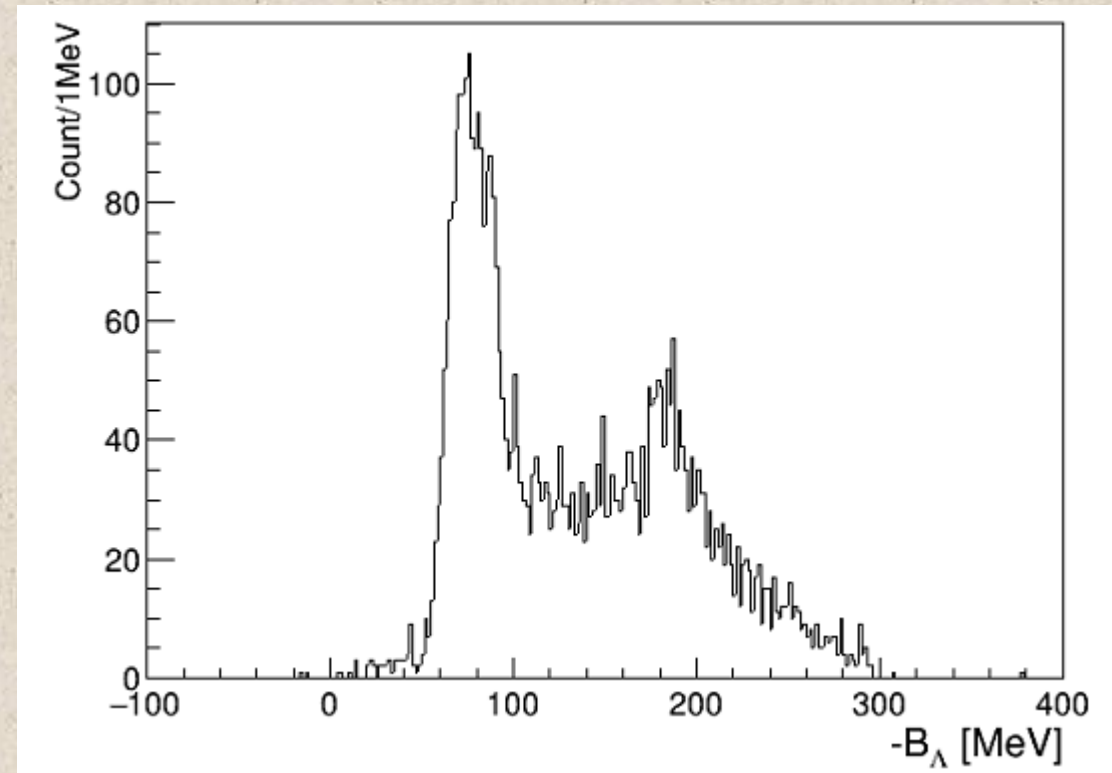


# Hydrogen data with gas region cut ( $|z| < 10$ cm)

Hydrogen data (gas region)  
 $\Lambda$  missing mass

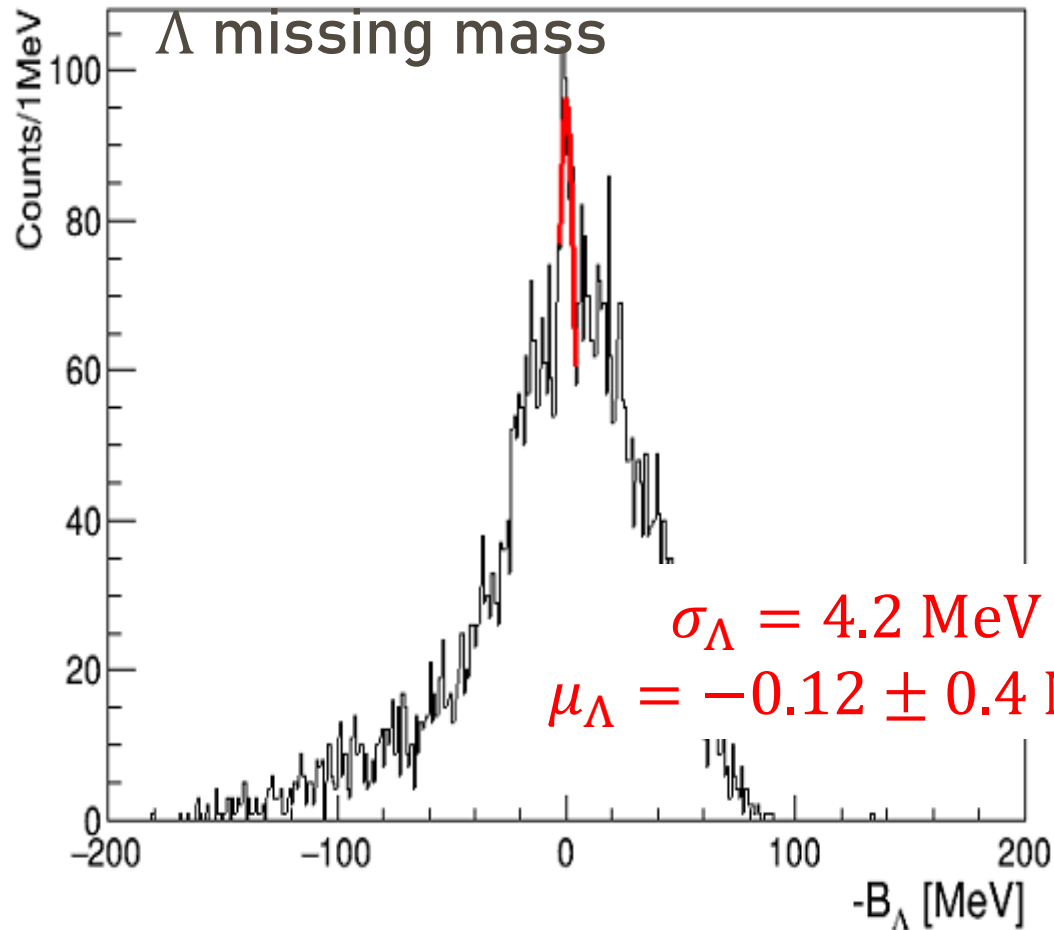


Hydrogen data (gas region)  
 $^{27}_{\Lambda}\text{Mg}$  missing mass



# Tritium data with gas region cut ( $|z| < 10$ cm)

Tritium data (gas region)



Tritium data (gas region)

$^{27}\Lambda\text{Mg}$  missing mass

