

RC Report November 7th -13th

Jason Bane
University Of Tennessee

Hall A Weekly Meeting
November 13th 2018

Summary for the week

- **11/7 Wed ~63% ABU**
 - CODA Crashes
 - MCC- HV drops, and other small issues
- **11/8 Thr ~69% ABU**
 - DAY - “Best shift in 12 GeV years!” B. Wojtsekhowski
 - 1L17 tuning, HV drops, issue with 2L24
- **11/9 Fri ~69% ABU**
 - 2L10, 1L23- a few hours

Summary for the week

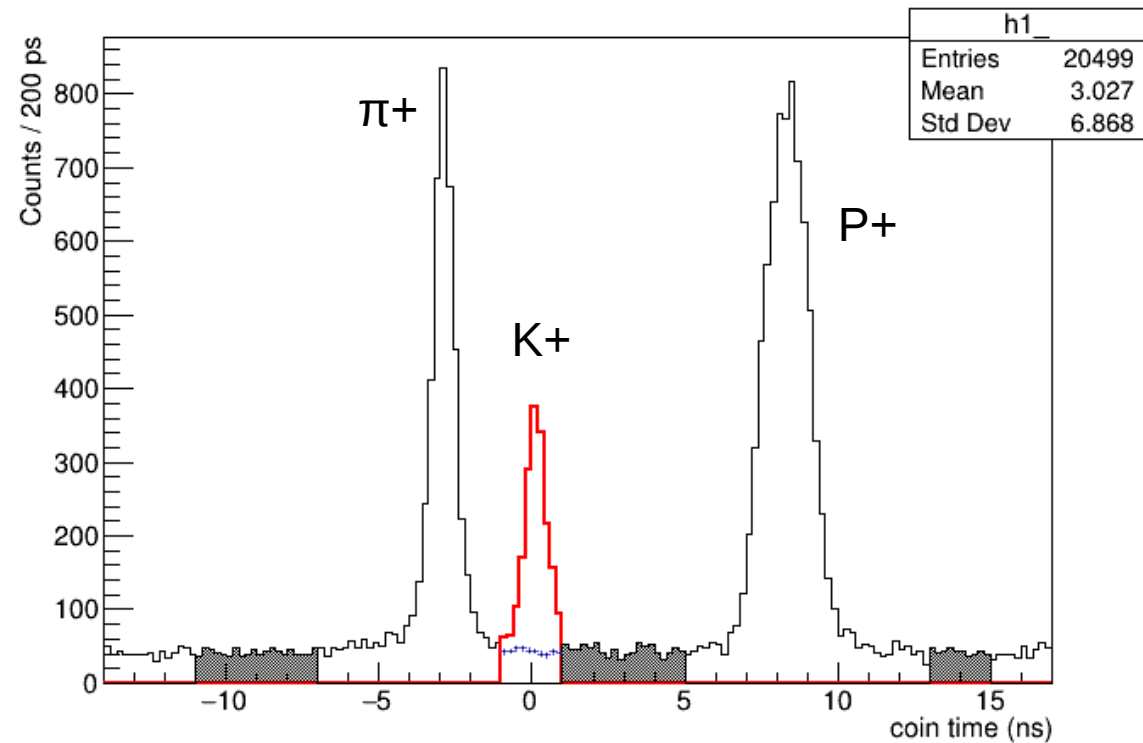
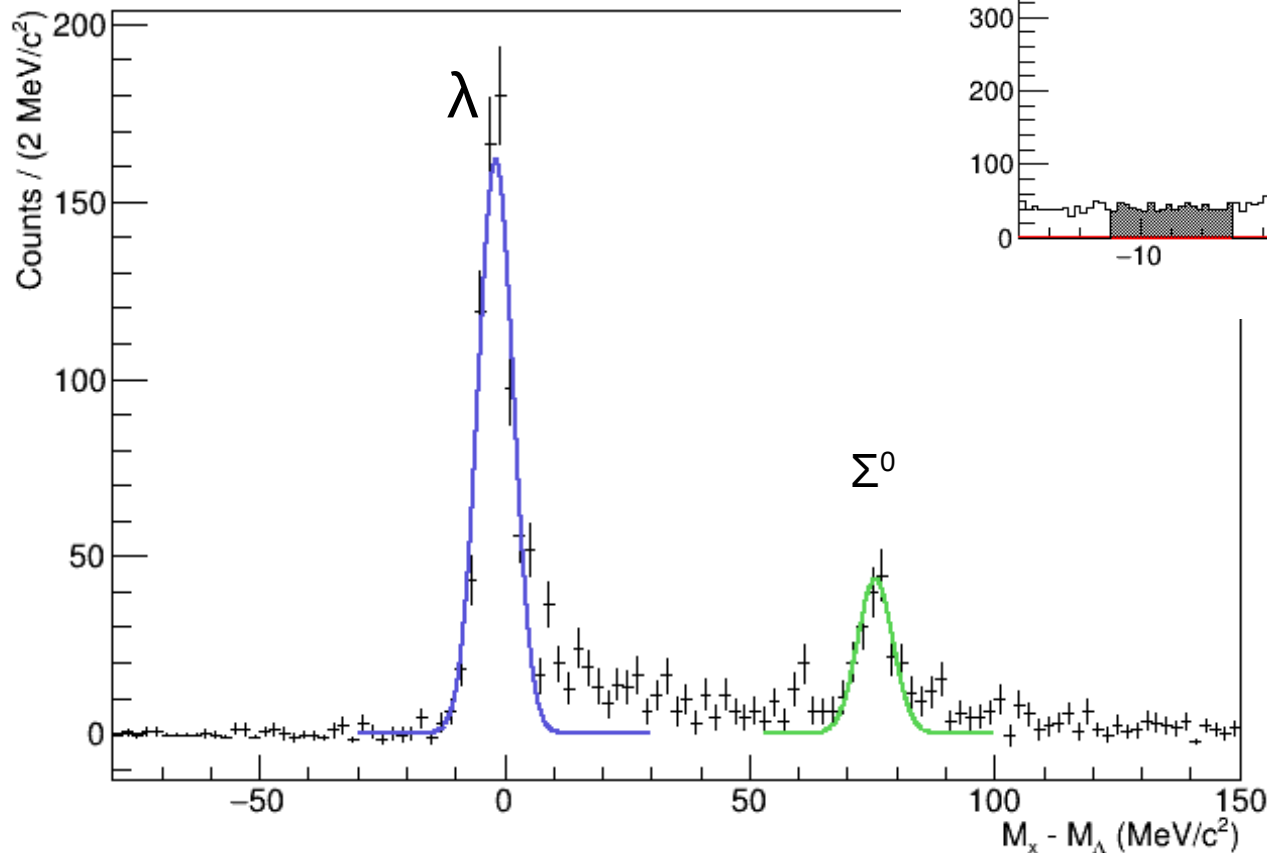
- **11/10 Sat ~ 33% ABU**
 - 1L23 Dropped HV lost about 9 hours , 1L24 1 hour
- **11/11 Sun ~ 57% ABU**
 - 1L24 repeated trips, 1L25 & 1L26 HV lost ~2 hours
- **11/12 Mon & 11/13 owl ~21% ABU / 64 % of owl**
 - Recovery 8 hours, S. linac drops PSS*2, FSD faults(starts at 14:41 back around 04:30)
 - ~03:30 11/13 Truck ramp door opened
 - Recovery of about 1.5 hours

Summary for the week

$N_{\{K^+\}} = 1060$

$N_{\{\Lambda\}} = 730$

$N_{\{\Sigma^0\}} = 200$



Thanks!

Thank you!

- Kaon Group
- Entire Tritium Army
- Tech staff and Target group
- Hall A Collaboration
- MCC
- Many more!!

- Good luck to Shujie Li