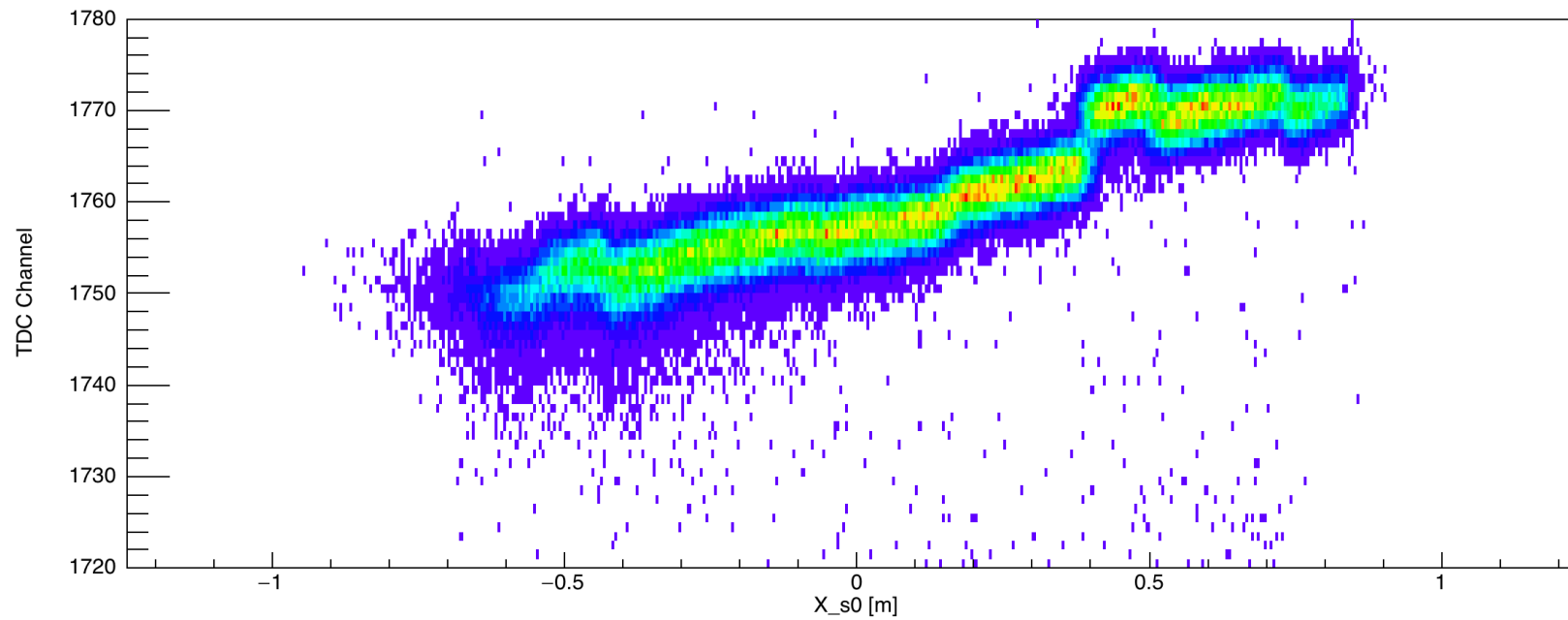


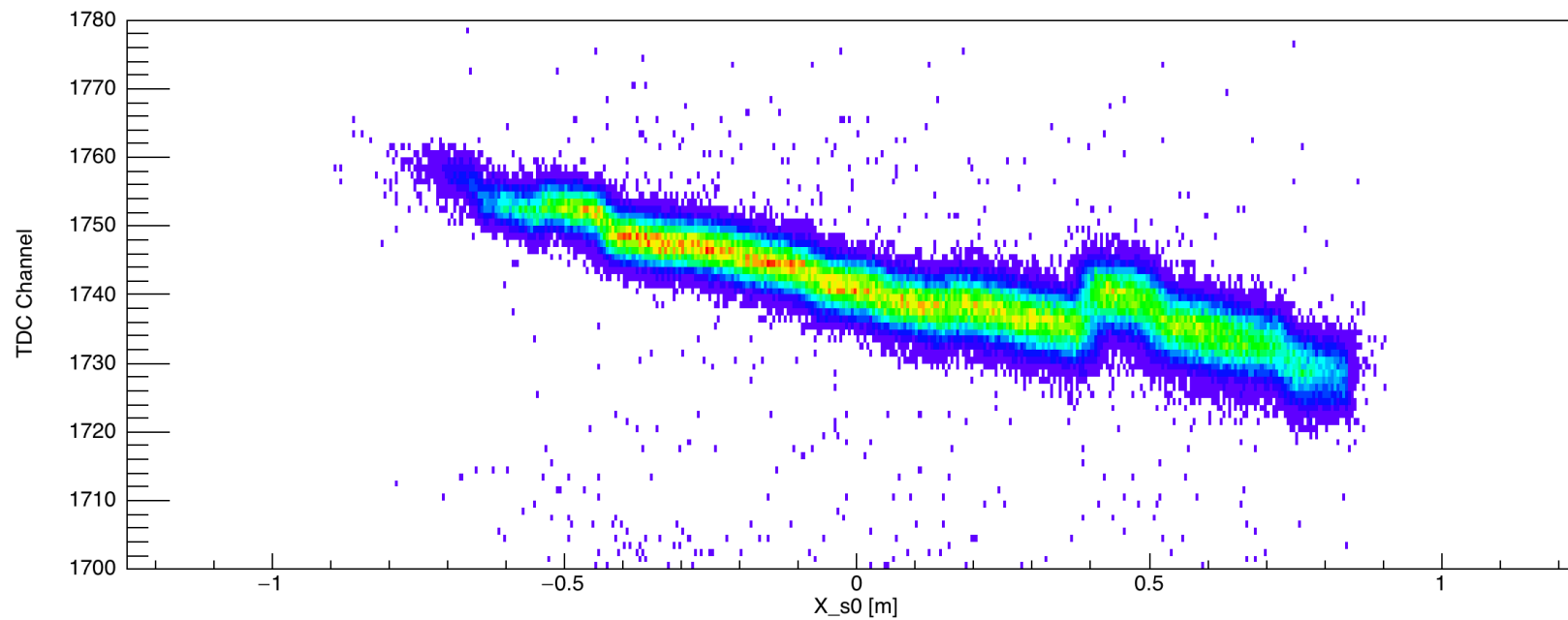
Singal arm HRS timing Calibration

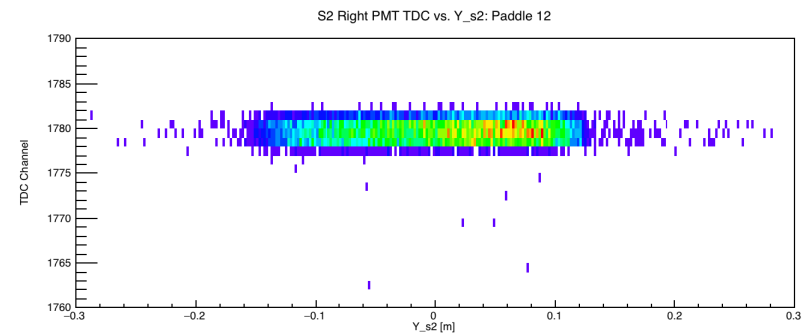
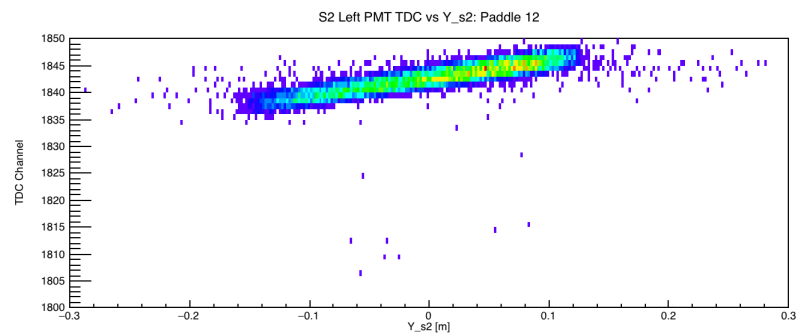
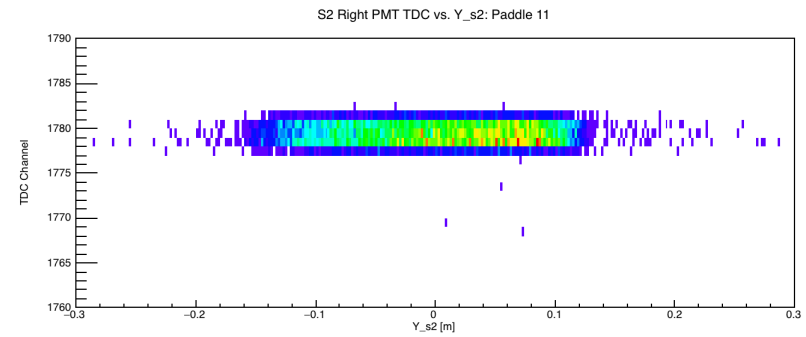
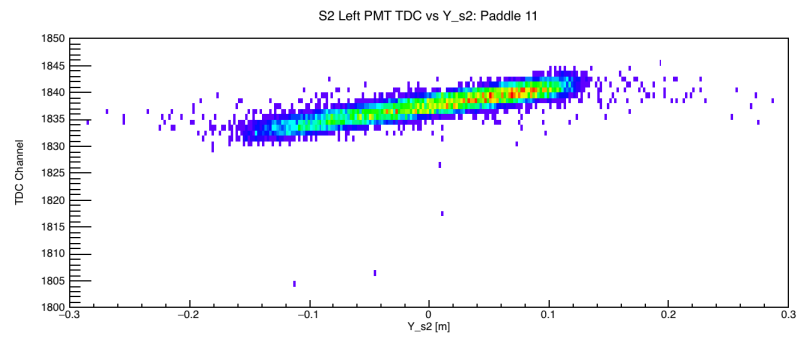
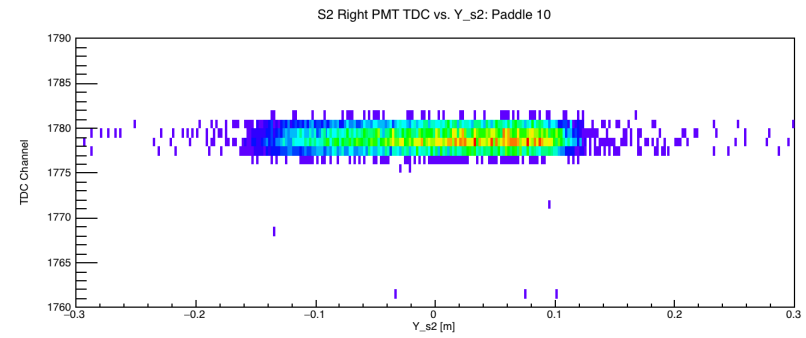
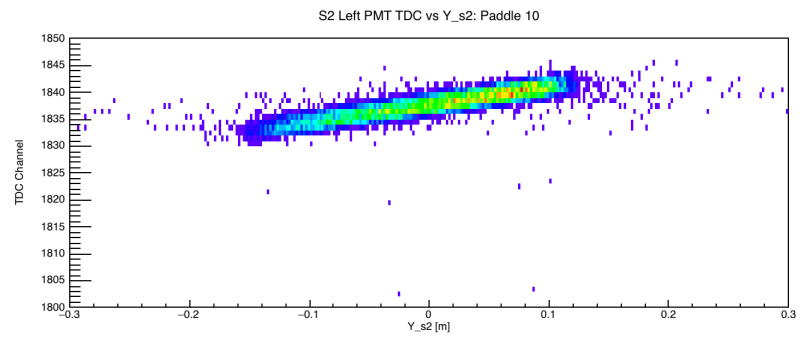
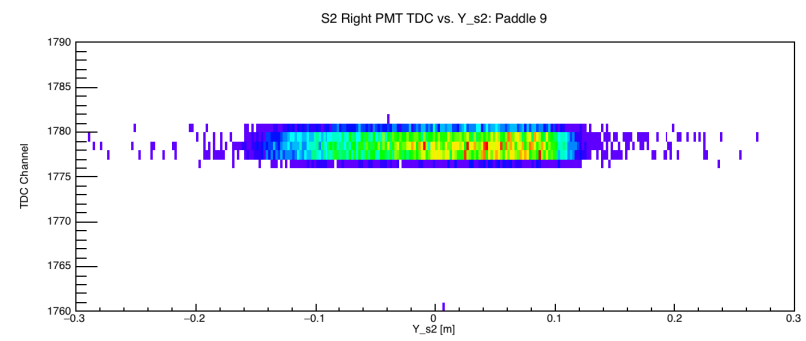
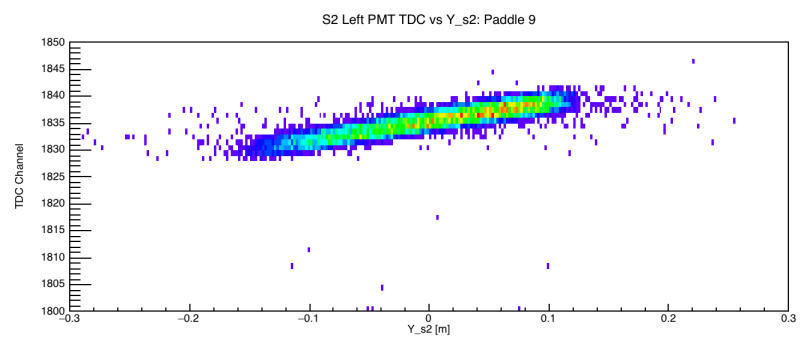
Tong

LHRS Left_s0_TDC vs X: Good Electrons

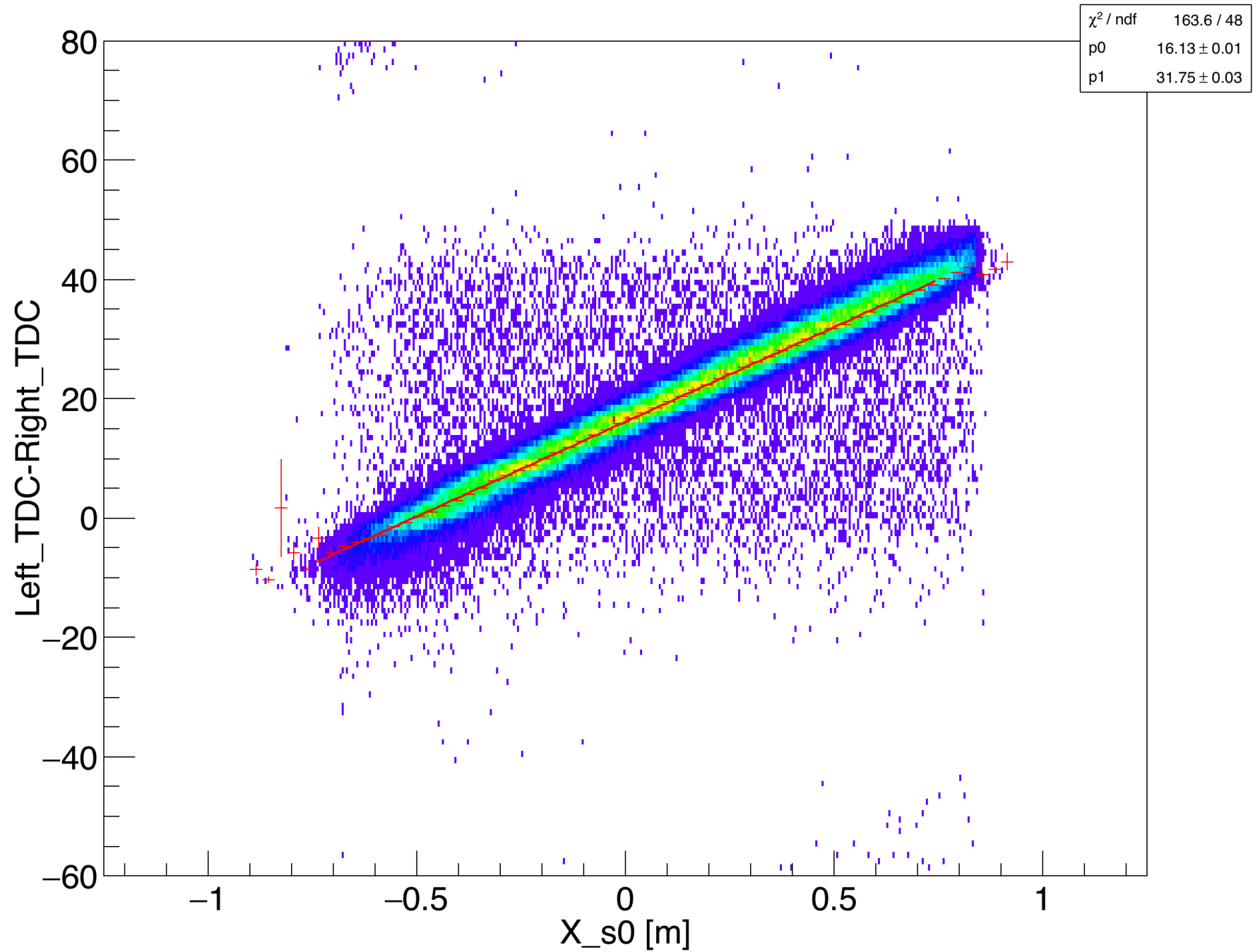


LHRS Right_s0_TDC vs Track X: Good Electrons

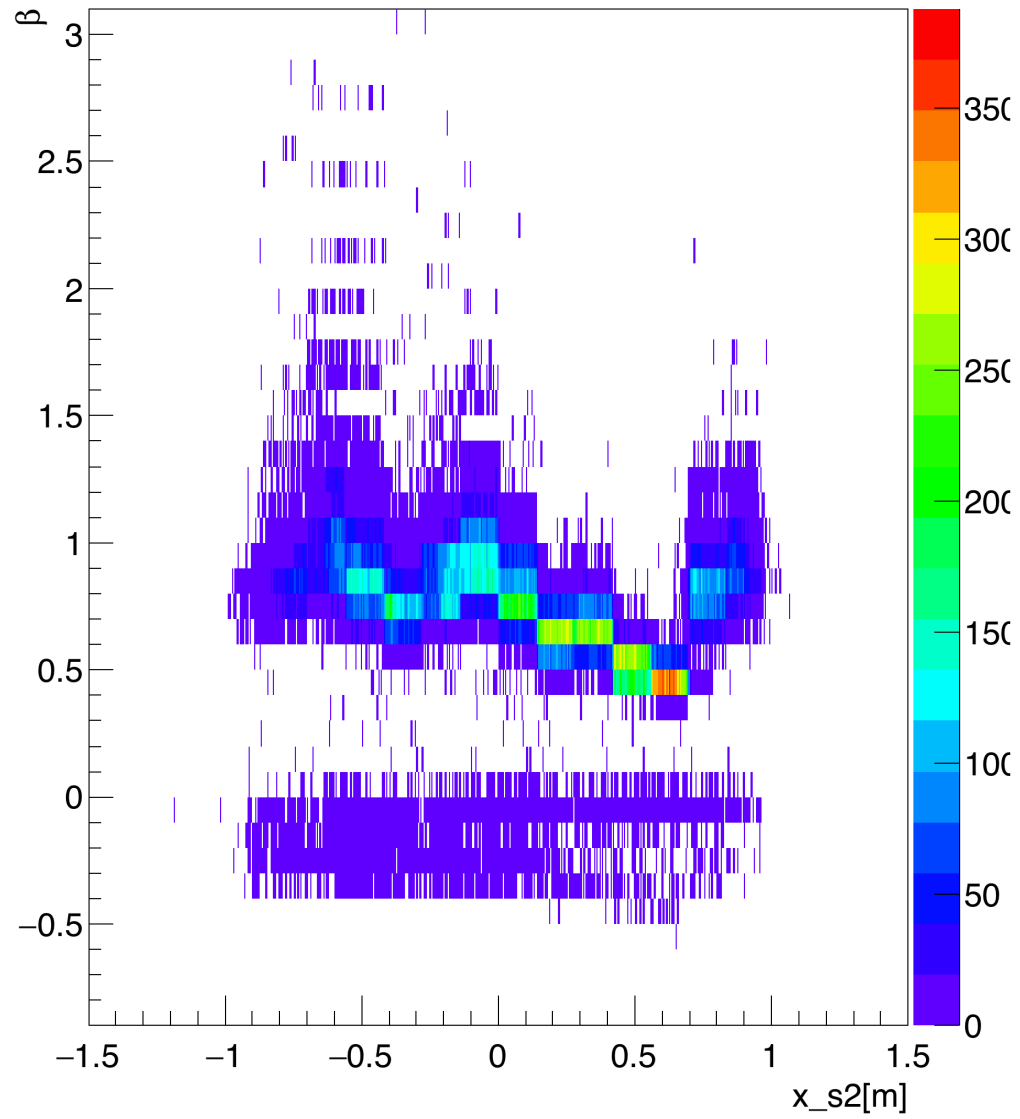




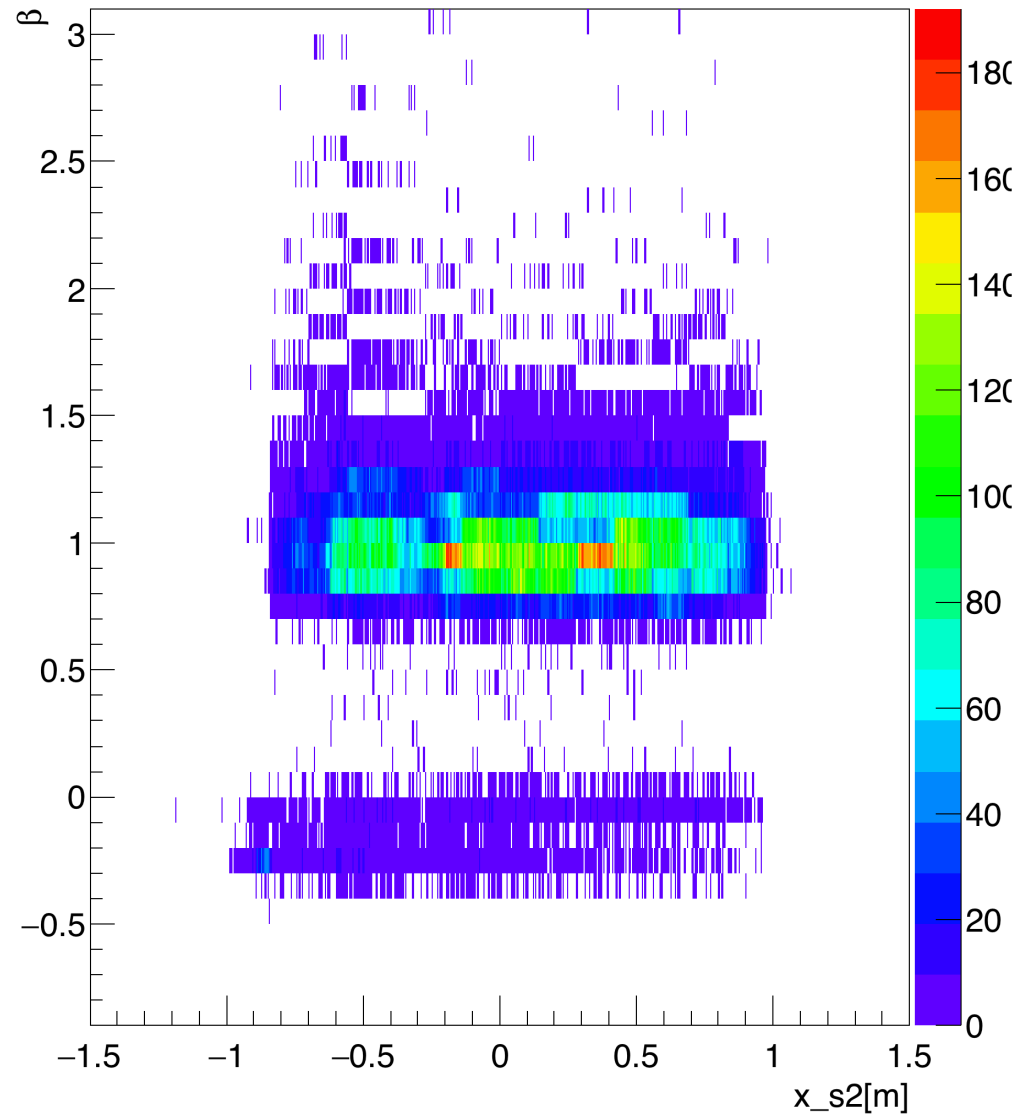
LHRS S0 : Left_TDC - Right_TDC vs X: Good Electrons



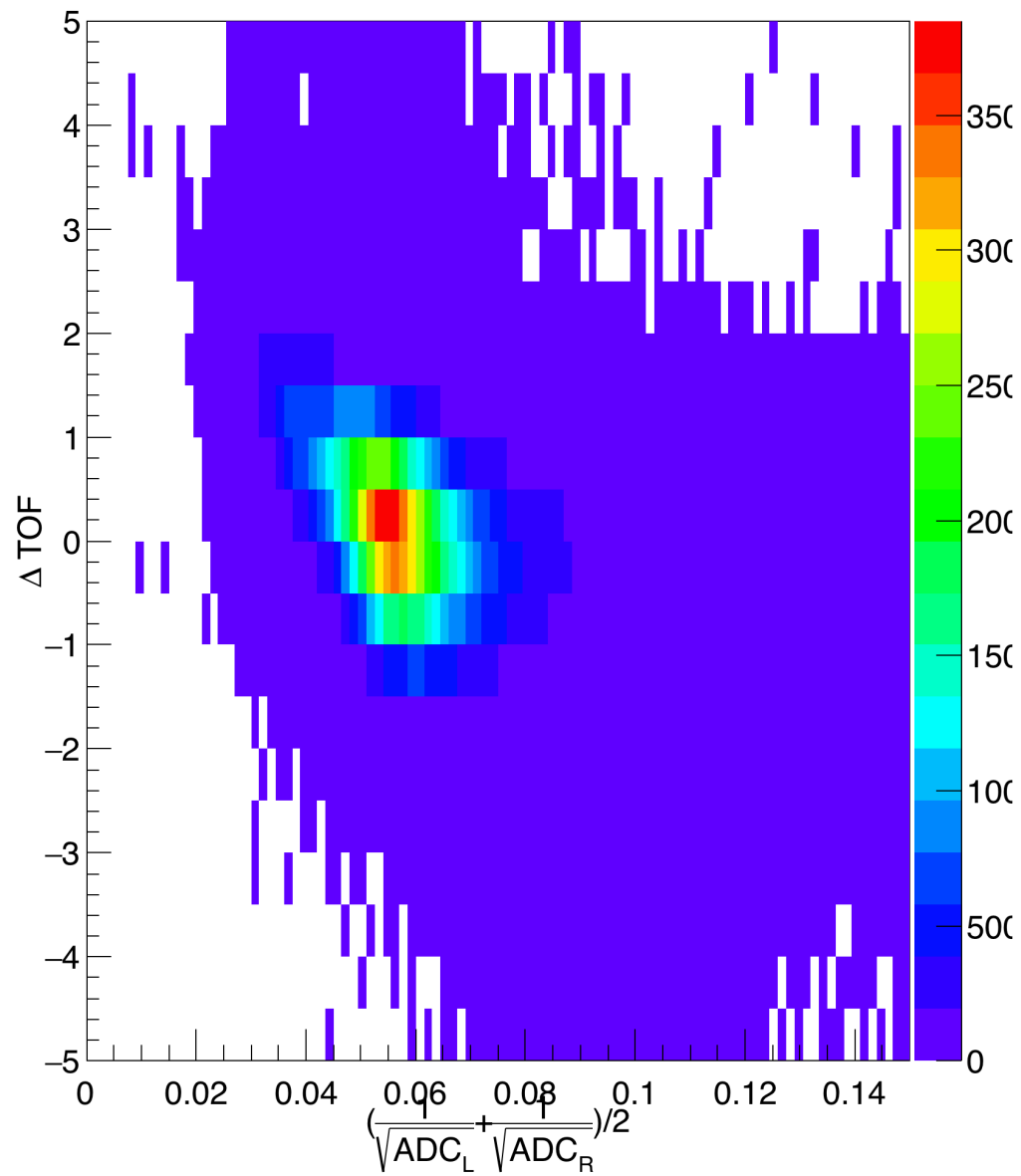
tracking β VS $s2_x(m)$ -- Before Calibration



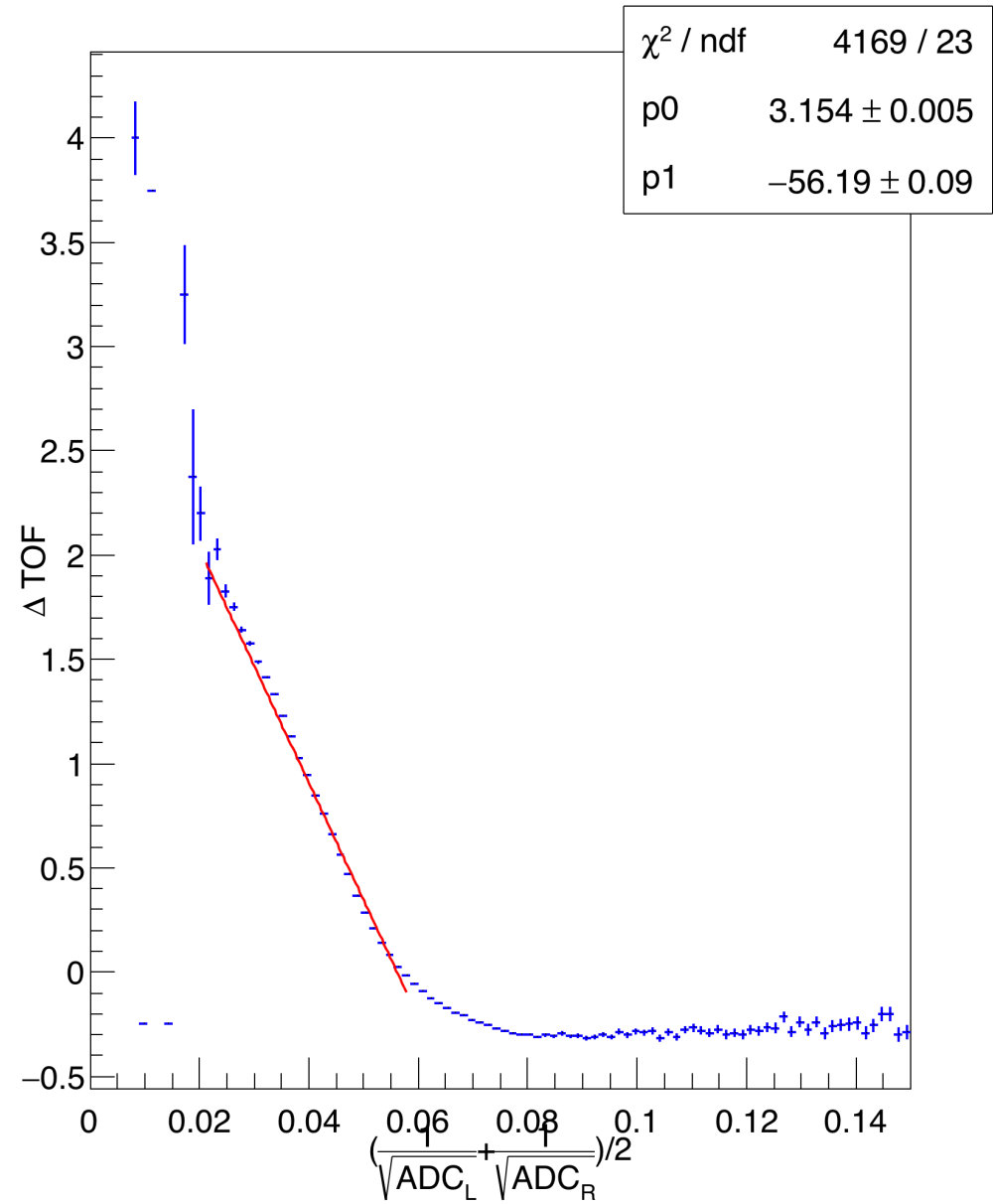
β VS $x_{s2}(m)$ -- After Calibration



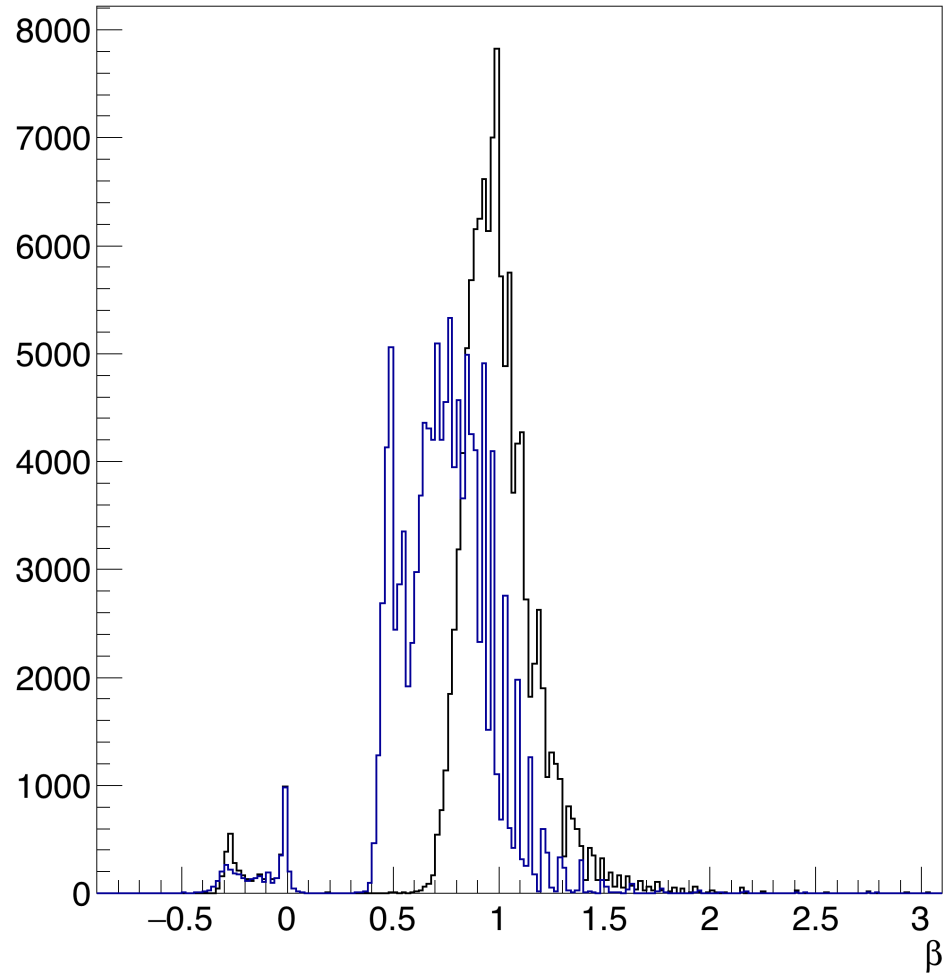
Δ TOF VS TW effect



Δ TOF VS TW effect



β after calibration



β after calibration

